

Product datasheet for **RC210716**

EEF1A2 (NM_001958) Human Tagged ORF Clone

Product data:

Product Type:	Expression Plasmids
Product Name:	EEF1A2 (NM_001958) Human Tagged ORF Clone
Tag:	Myc-DDK
Symbol:	EEF1A2
Synonyms:	DEE33; EEF1AL; EF-1-alpha-2; EF1A; EIEE33; HS1; MRD38; STN; STNL
Mammalian Cell Selection:	Neomycin
Vector:	pCMV6-Entry (PS100001)
E. coli Selection:	Kanamycin (25 ug/mL)



[View online »](#)

ORF Nucleotide Sequence:

>RC210716 representing NM_001958
 Red=Cloning site Blue=ORF Green=Tags(s)

TTTTGTAATACGACTCACTATAGGGCGGCCGGGAATTCGTCGACTGGATCCGGTACCGAGGAGATCTGCC
 GCC**CGCATCGCC**

ATGGGCAAGGAGAAGACCCACATCAACATCGTGGTCATCGGCCACGTGGACTCCGGAAAGTCCACCACCA
 CGGGCCACCTCATCTACAAATGCGGAGGTATTGACAAAAGGACATTGAGAAGTTCGAGAAGGAGGCGGC
 TGAGATGGGGAAGGGATCCTTCAAGTATGCCTGGGTGCTGGACAAGCTGAAGGCGGAGCGTGAGCGCGGC
 ATCACCATCGACATCTCCCTCTGGAAGTTCGAGACCACCAAGTACTACATCACCATCATCGATGCCCCCG
 GCCACCGGACTTCAAGAACATGATCACGGGTACATCCCAGGCGGACTGCGCAGTGTGATCGTGGC
 GGGCGGCGTGGGCGAGTTCGAGGCGGGCATCTCCAAGAATGGGCAGACGCGGGAGCATGCCCTGCTGGCC
 TACACGCTGGGTGTGAAGCAGCTCATCGTGGCGTGAACAAAATGGACTCCACAGAGCCGGCCTACAGCG
 AGAAGCGTACGACGAGATCGTCAAGGAAGTCAAGCGCTACATCAAGAAGATCGGCTACAACCCGGCCAC
 CGTGCCCTTTGTGCCATCTCCGGCTGGCAGGTGACAACATGCTGGAGCCCTCCCCAACATGCCGTGG
 TTCAAGGGCTGGAAGGTGGAGCGTAAGGAGGGCAACGCAAGCGCGGTGTCCTGCTGGAGGCCCTGGACA
 CCATCCTGCCCCACGCGCCACGGACAAGCCCTGCGCCTGCCGTGACAGGACGTGTACAAGATTGG
 CGGCATTGGCACGGTGCCTGGGCCGGGTGGAGACCGGCATCCTGCGGCCGGGCATGGTGGTGACCTTT
 GCGCCAGTGAACATCACCCTGAGGTGAAGTCAAGTGGAGATGCACCACGAGGCTCTGAGCGAAGCTCTGC
 CCGGCGACAACGTCGGCTTCAATGTGAAGAAGTGTGGTGAAGGACATCCGGCGGGCAACGTGTGTGG
 GGACAGCAAGTCTGACCCGCCGAGGAGGCTGCTCAGTTCACCTCCAGGTCATCATCTGAACACCCG
 GGGCAGATTAGCGCCGGTACTCCCGGTCATCGACTGCCACACAGCCACATCGCCTGCAAGTTTGGCG
 AGCTGAAGGAGAAGATTGACCGCGCTCTGGCAAGAAGCTGGAGGACAACCCCAAGTCCCTGAAGTCTGG
 AGACGCGGCCATCGTGGAGATGGTGGCGGAAAGCCCATGTGTGTGGAGAGCTTCTCCAGTACCCGCT
 CTCGGCCGCTTCGCCGTGCGCGACATGAGGACAGCGGTGGCCGTAGGCGTCATCAAGAAGTGGAGAAGA
 AGAGCGCGCGCGCGCAAGGTACCAAGTCCGCGCAGAAGGCGCAGAAGGCGGGCAAG

ACGCGTACGCGGCCGCTCGAGCAGAACTCATCTCAGAAGAGGATCTGGCAGCAATGATATCCTGGATT
 ACAAGGATGACGACGATAAGGTTTAA

Protein Sequence:

>RC210716 representing NM_001958
 Red=Cloning site Green=Tags(s)

MGKEKTHINIVVIGHVDSGKSTTTGHLIYKCGGIDKRTIEKFEKEAAEMGKGSFKYAWVLDKLAERER
 ITIDISLWKFETTKYYITIIDAPGHRDFIKNMITGTSQADCAVLIVAAGVGEFEAGISKNGQTRHALLA
 YTLGVKQLIVGVNKMDSTEPAYSEKRYDEIVKEVSAYIKKIGYNPATVPFVPISGWHGDNMLEPSNMPW
 FKGWKVERKEGNASGVSLLEALDITLPPTRPTDKPLRLPLQDVYKIGGIGTVPVGRVETGILRPGMVVTF
 APVNITTEVKSVMHHEALSEALPGDNVGFNVKNVSVKDIRRGNVCGDSKSDPPQEAQFTSQVILNHP
 GQISAGYSPVIDCHTAHIACKFAELKEKIDRRSGKKLEDNPKSLKSGDAAIVEMVPGKPMCVESFSQYPP
 LGRFAVRDMRQTVAVGVIKNVEKKSGGAGKVTKSAQKAQKAGK

TRTRPLEQKLISEEDLAANDILDYKDDDDKV

Chromatograms:

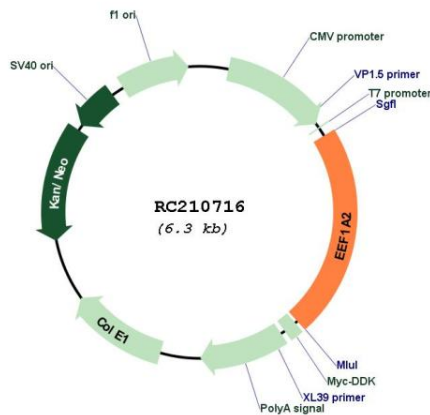
https://cdn.origene.com/chromatograms/mg3691_e01.zip

Restriction Sites:

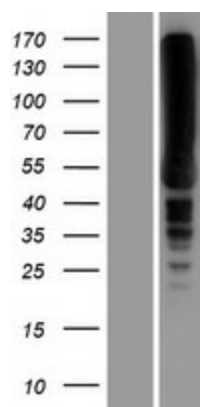
Sgfl-Mlul

Note:	Plasmids are not sterile. For experiments where strict sterility is required, filtration with 0.22um filter is required.
RefSeq:	NM_001958.5
RefSeq Size:	1841 bp
RefSeq ORF:	1392 bp
Locus ID:	1917
UniProt ID:	Q05639
Cytogenetics:	20q13.33
Domains:	GTP_EFTU, GTP_EFTU_D3, GTP_EFTU_D2
Protein Families:	Druggable Genome
MW:	50.3 kDa
Gene Summary:	This gene encodes an isoform of the alpha subunit of the elongation factor-1 complex, which is responsible for the enzymatic delivery of aminoacyl tRNAs to the ribosome. This isoform (alpha 2) is expressed in brain, heart and skeletal muscle, and the other isoform (alpha 1) is expressed in brain, placenta, lung, liver, kidney, and pancreas. This gene may be critical in the development of ovarian cancer. [provided by RefSeq, Mar 2014]

Product images:



Circular map for RC210716



Western blot validation of overexpression lysate (Cat# [LY419596]) using anti-DDK antibody (Cat# [TA50011-100]). Left: Cell lysates from untransfected HEK293T cells; Right: Cell lysates from HEK293T cells transfected with RC210716 using transfection reagent MegaTran 2.0 (Cat# [TT210002]).