

Product datasheet for RC210712

NAT8L (NM_178557) Human Tagged ORF Clone

Product data:

Product Type: Expression Plasmids
Product Name: NAT8L (NM_178557) Human Tagged ORF Clone
Tag: Myc-DDK
Symbol: NAT8L
Synonyms: CML3; NACED; NAT8-LIKE
Mammalian Cell Selection: Neomycin
Vector: pCMV6-Entry (PS100001)
E. coli Selection: Kanamycin (25 ug/mL)
ORF Nucleotide Sequence: >RC210712 ORF sequence
 Red=Cloning site Blue=ORF Green=Tags(s)

TTTTGTAATACGACTCACTATAGGGCGCCGGGAATTCGTCGACTGGATCCGGTACCGAGGAGATCTGCC
GCC**CGATCGCC**

ATGGCGGACATCGAGCAGTACTACATGAAGCCGCCGGCTCCTGCTTCTGGGTGGCCGTGCTGGATGGCA
ACGTGGTGGGCATTGTGGCTGCACGGGCCACGAGGAGGACAACCGGTGGAGCTGCTCGGGATGTCTGT
GGACTCACGTTTCCGAGGCAAGGGCATCGCCAAGGCGCTGGGCCGGAAGGTGCTGGAGTTCGCCGTGGT
CACAACACTCCGCGGTGGTGTGGGCACGACGGCCGTCAAGGTGGCCGCCACAAGCTCTACGAGTCGC
TGGGCTTCAGACACATGGGCGCCAGTGACCACTACGTGCTGCCGGCATGACCCTCTCGCTGGCTGAGCG
CCTCTTCTCCAGGTCGGTACCACCGCTACCGCCTGCAGCTGCCGAGGAG

ACGCGTACGCGGCCGCTCGAGCAGAACTCATCTCAGAAGAGGATCTGGCAGCAAATGATATCCTGGATT
ACAAGGATGACGACGATAAGGTTTAA

Protein Sequence: >RC210712 protein sequence
 Red=Cloning site Green=Tags(s)

MADIEQYYMKPPGSCFWVAVLDGNVVGIVAAARAHEEDNTVELLRMSVDSRFRGKGIKALGRKVLFAVV
HNYSAVVLGTTAVKVAHKLQYESLGFHRMGASDHVYVLPMTLSLAERLFFQVRYHRYRLQREE

TRTRPLEQKLISEEDLAANDILDYKDDDDKV

Chromatograms: https://cdn.origene.com/chromatograms/mk6005_e06.zip

Restriction Sites: SgfI-MluI



[View online »](#)

Cloning Scheme:


ACCN: NM_178557

ORF Size: 402 bp

OTI Disclaimer: The molecular sequence of this clone aligns with the gene accession number as a point of reference only. However, individual transcript sequences of the same gene can differ through naturally occurring variations (e.g. polymorphisms), each with its own valid existence. This clone is substantially in agreement with the reference, but a complete review of all prevailing variants is recommended prior to use. [More info](#)

OTI Annotation: This clone was engineered to express the complete ORF with an expression tag. Expression varies depending on the nature of the gene.

Components: The ORF clone is ion-exchange column purified and shipped in a 2D barcoded Matrix tube containing 10ug of transfection-ready, dried plasmid DNA (reconstitute with 100 ul of water).

- Reconstitution Method:**
1. Centrifuge at 5,000xg for 5min.
 2. Carefully open the tube and add 100ul of sterile water to dissolve the DNA.
 3. Close the tube and incubate for 10 minutes at room temperature.
 4. Briefly vortex the tube and then do a quick spin (less than 5000xg) to concentrate the liquid at the bottom.
 5. Store the suspended plasmid at -20°C. The DNA is stable for at least one year from date of shipping when stored at -20°C.

RefSeq: [NM_178557.2](#), [NP_848652.1](#)

RefSeq Size: 5894 bp

RefSeq ORF: 909 bp

Locus ID: 339983

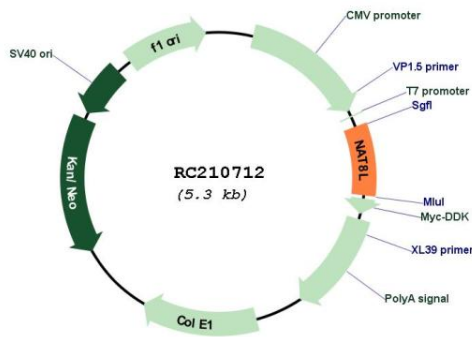
UniProt ID: [Q8N9F0](#)

Cytogenetics: 4p16.3

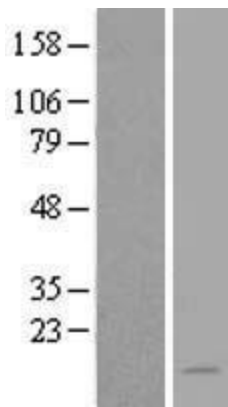
MW: 15.1 kDa

Gene Summary: This gene encodes a single-pass membrane protein, which contains a conserved sequence of the GCN5 or NAT superfamily of N-acetyltransferases and is a member of the N-acetyltransferase (NAT) superfamily. This protein is a neuron-specific protein and is the N-acetylaspartate (NAA) biosynthetic enzyme, catalyzing the NAA synthesis from L-aspartate and acetyl-CoA. NAA is a major storage and transport form of acetyl coenzyme A specific to the nervous system. The gene mutation results in primary NAA deficiency (hypoacetylaspartia). [provided by RefSeq, Dec 2010]

Product images:



Circular map for RC210712



Western blot validation of overexpression lysate (Cat# [LY403615]) using anti-DDK antibody (Cat# [TA50011-100]). Left: Cell lysates from untransfected HEK293T cells; Right: Cell lysates from HEK293T cells transfected with RC210712 using transfection reagent MegaTran 2.0 (Cat# [TT210002]).