

Product datasheet for RC210702

CACNA1G (NM_198382) Human Tagged ORF Clone

Product data:

Product Type:	Expression Plasmids
Product Name:	CACNA1G (NM_198382) Human Tagged ORF Clone
Tag:	Myc-DDK
Symbol:	CACNA1G
Synonyms:	Ca(V)T.1; Cav3.1; NBR13; SCA42; SCA42ND
Mammalian Cell Selection:	Neomycin
Vector:	pCMV6-Entry (PS100001)
E. coli Selection:	Kanamycin (25 ug/mL)
ORF Nucleotide Sequence:	>RC210702 representing NM_198382 Red=Cloning site Blue=ORF Green=Tags(s)

TTTTGTAATACGACTCACTATAGGGCGGCCGGAATTCGTCGACTGGATCCGGTACCGAGGAGATCTGCC
GCC**CGATCGCC**

ATGGACGAGGAGGAGGATGGAGCGGGCGCCGAGGAGTCGGGACAGCCCCGGAGCTTCATGCGGCTCAACG
ACCTGTGGGGGGCCGGGGCCGGCCGGGGCGGGGTGTCAGCAGAAAAGGACCCGGGCGCGGACTCCGA
GGCGGAGGGGCTGCCGTACCCGGCGCTGGCCCCGGTGGTTTTCTCTACTTGAGCCAGGACAGCCGCCG
CGGAGCTGGTGTCTCCGACGGTCTGTAACCCCTGGTTTGAGCGCATCAGCATGTTGGTCATCCTTCTCA
ACTGCGTGACCCTGGGCATGTTCCGGCCATGCGAGGACATCGCCTGTGACTCCCAGCGCTGCCGGATCCT
GCAGGCCCTTGTGACTTCATCTTTGCCTTCTTTGCCGTGGAGATGGTGGTGAAGATGGTGGCCTTGGGC
ATCTTTGGGAAAAAGTGTACCTGGGAGACACTTGAACCCGGCTTGAATTTTTCATCGTCATCGCAGGGA
TGCTGGAGTACTCGTGGACCTGCAAGACGTCAGCTTCTCAGCTGTCAGGACAGTCCGTGTGCTGCGACC
GCTCAGGGCCATTAACCGGGTGCCAGCATGCGCATCCTGTGACGTTGCTGGATACGCTGCCCATG
CTGGGCAACGTCCTGCTGCTCTGCTTCTCGTCTTCTTCACTTTCGGCATCGTCGGCGTCCAGCTGTGGG
CAGGGCTGCTTCGGAACCGATGCTTCTACCTGAGAATTCAGCCTCCCCCTGAGCGTGGACCTGGAGCG
CTATTACCAGACAGAGAACGAGGATGAGAGCCCCCTTCACTGCTCCAGCCACGCGAGAACGGCATGCGG
TCCTGCAGAAGCGTGCCACGCTGCGCGGGGACGGGGCGGTGGCCACCTTGGCGTCTGGACTATGAGG
CCTACAACAGCTCCAGCAACACCACCTGTGTCACTGGAACCACTACTACCAACTGCTCAGCGGGGA
GCACAACCCCTTCAAGGGCGCCATCAACTTTGACAACATTGGCTATGCCTGGATCGCCATCTTCCAGGTC
ATCAGCTGGAGGGCTGGGTCGACATCATGTAATTTGTGATGGATGCTCATTCTTCTACAATTTTCATCT
ACTTATCCTCCTCATCATCGTGGGCTCCTTCTCATGATCAACCTGTGCTGGTGGTATTGCCACGCA
GTTCTCAGAGACCAAGCAGCGGAAAGCCAGCTGATGCGGGAGCAGCGTGTGCGGTTCTGTCCAACGCC
AGCACCCTGGCTAGCTTCTGTAGCCCGGACGCTGCTATGAGGAGCTGCTCAAGTACCTGGTGTACATCC
TTCGTAAGGCAGCCCGCAGGCTGGCTCAGGTCTCTCGGGCAGCAGGTGTGCGGGTGGGCTGCTCAGCAG
CCCAGCACCCCTCGGGGGCCAGGAGACCAGCCAGCAGCAGCTGCTCTGCTCCACCGCCGCTATCC



GTCCACCACCTGGTGCACCACCACCACCACCATCACCACCACTACCACCTGGGCAATGGGACGCTCAGGG
 CCCCCGGGCCAGCCCGGAGATCCAGGACAGGGATGCCAATGGGTCCC GCCCGGCTCATGCTGCCACCACC
 CTCGACGCCTGCCCTCTCCGGGGCCCCCTGGTGGCGCAGAGTCTGTGCACAGCTTCTACCATGCCGAC
 TGCCACTTAGAGCCAGTCCGCTGCCAGGCGCCCCCTCCAGGTCCCCATCTGAGGCATCCGGCAGGACTG
 TGGGCAGCGGGAAGGTGTATCCCACCGTGCACACCAGCCCTCCACCGGAGACGCTGAAGGAGAAGGCACT
 AGTAGAGTGGCTGCCAGCTCTGGGCCCAACCCTCACCAGCTCAACATCCCACCCGGGCCCTACAGC
 TCCATGGACAAGCTGCTGGAGACACAGAGTACAGGTGCCTGCCAAAGCTTTGCAAGATCTCCAGCCCTT
 GCTTGAAAGCAGACAGTGGAGCCTGTGGTCCAGACAGCTGCCCTACTGTGCCCGGGCCGGGCAGGGGA
 GGTGGAGCTCGCCGACCTGAAATGCCTGACTCAGACAGCGAGGCAAGTTATGAGTTCACACAGGATGCC
 CAGCACAGCGACCTCCGGGACCCCCACAGCCGGCGGCAACGGAGCCTGGGCCAGATGCAGAGCCAGCT
 CTGTGCTGGCCTTCTGGAGGTAATCTGTGACACCTTCCGAAAGATTGTGGACAGCAAGTACTTTGGCCG
 GGGAAATCATGATCGCCATCCTGGTCAACACACTCAGCATGGGCATCGAATACCACGAGCAGCCCGAGGAG
 CTTACCAACGCCCTAGAAATCAGCAACATCGTCTTACCAGCCTCTTGGCCCTGGAGATGCTGCTGAAGC
 TGCTTGTGTATGGTCCCTTTGGTACATCAAGAATCCCTACAACATCTTCGATGGTGTCTTGTGGTGT
 CAGCGTGTGGGAGATCGTGGGCCAGCAGGGGGCGGCCTGTGCGTGTGCGGACCTTCCGCTGATGCGT
 GTGCTGAAGCTGGTGCCTTCTGCCGGCGCTGCAGCGGAGCTGGTGGTGTCTATGAAGACCATGGACA
 ACGTGGCCACCTTCTGCATGCTGCTTATGCTCTTCATCTTCATCTTACAGCATCTGGGCATGCATCTCTT
 CGGCTGCAAGTTTGCCTCTGAGCGGGATGGGGACACCCTGCCAGACCGGAAGAAATTTGACTCCTTGCTC
 TGGGCCATCGTCACTGTCTTTCAGATCTGACCCAGGAGGACTGGAACAAAGTCTCTACAATGGTATGG
 CCTCCACGTGCTCCTGGGCGGCCCTTATTTTATTGCCCTCATGACCTTCGGCAACTACGTGCTCTTCAA
 TTTGCTGGTCGCCATTCTGGTGGAGGGCTCCAGGCGGAGGGAGATGCCAACAAGTCCGAATCAGAGCCC
 GATTTCTTCTCACCAGCCTGGATGGTGTGGGACAGGAAGAAGTGTGGCCTTGGTGTCCCTGGGAG
 AGCAACCGGAGCTGCGGAAGAGCCTGCTGCCCTCTCATCATCCACAGCGCCACACCCATCATGCTGCT
 GCCAAGAGCACACAGCAGGGCCCTGGGCGAGGCGCTGGGCCCTGCGTTCGCGCCGCACAGCAGCAGCGGG
 TCGGCAGAGCCTGGGGCGGCCACGAGATGAAGTACCAGCCAGCGCCCGAGCTCTCCGCACAGCCCT
 GGAGCGTGAAGCAGCTGGACCAGCAGGCGCTCCAGCCGGAACAGCCTCGGCCGTGCACCCAGCCTGAA
 GCGGAGAAGCCCAAGTGGAGAGCGGCGGTCCCTGTTGTGCGGAGAAGGCCAGGAGAGCCAGGATGAAGAG
 GAGAGCTCAGAAGAGGAGCGGGCCAGCCCTGCGGGCAGTACCATCGCCACAGGGGGTCCCTGGAGCGGG
 AGGCCAAGAGTTCCTTTGACCTGCCAGACACACTGCAGGTGCCAGGGCTGCATCGCACTGCCAGTGGCCG
 AGGCTCTGCTTCTGAGCACCAGGACTGCAATGGCAAGTCCGCTTACGGGCGCTGGCCCGGGCCCTGCGG
 CCTGATGACCCCCACTGGATGGGGATGACGCCGATGACGAGGGCAACCTGAGCAAGGGGAACGGGTCC
 GCGCGTGGATCCGAGCCGACTCCCTGCCTGCTGCCTCGAGCGAGACTCCTGGTCAAGCCTACATCTCCC
 TCCTCAGTCCAGGTTCCGCTCCTGTGTACCCGATCATCACCCACAAGATGTTCCGACCAGTGGTCCCT
 GTCATCATCTTCTTAAGTGCATCACCATCGCCATGGAGCGCCCCAAAATTGACCCACAGCGTGAAC
 GCATCTTCTGACCTCTCCAATTACATCTTACCAGCAGTCTTTCTGGCTGAAATGACAGTGAAGGTGGT
 GGCAGTGGGCTGGTGTTCGGGGAGCAGGCGTACCTGCGGAGCAGTTGGAACGTGCTGGACGGGCTGTTG
 GTGCTCATCTCCGTCATCGACATCTGGTGTCCATGGTCTTGCAGCGGCACCAAGATCCTGGGCATGC
 TGAGGGTGTGCGGCTGCTGCGGACCCTGCGCCGCTCAGGGTGTATCAGCCGGGCGCAGGGGCTGAAGCT
 GGTGGTGGAGACGCTGATGTCCTCACTGAAACCCATCGGCAACATTGTAGTCACTGCTGTGCCTTCTTC
 ATCATTTTTCGGCATCTTGGGGTGCAGCTCTTCAAAGGGAAGTTTTTCGTGTGCCAGGGCGAGGATACCA
 GGAACATCACCATAAATCGGACTGTGCCGAGGCCAGTTACCGGTGGGTCCGGCACAAGTACAACCTTGA
 CAACCTTGGCCAGGCCCTGATGTCCCTGTTGTTTTGGCCTCAAAGGATGGTTGGGTGGACATCATGTAC
 GATGGGCTGGATGCTGTGGGCGTGGACCAGCAGCCATCATGAACCACAACCCCTGGATGCTGCTGACT
 TCATCTCGTTCTGCTCATTGTGGCCTTCTTGTCTGAACATGTTTGTGGGTGTGGTGGGAGAAGT
 CCACAAGTGTCCGAGCACCAGGAGGAAGAGGAGGCCCGCGGGGAGGAGAAGCGCCTACGAAGACTG
 GAGAAAAAGAGAAGGAATCTAATGCTGGACGATGTAATTGCTTCCGGCAGCTCAGCCAGCGCTGCGTCAG
 AAGCCCAGTGCAAACCTTACTACTCCGACTACTCCGCTTCCGGCTCCTCGTCCACCACTTGTGCACCAG
 CCACTACCTGGACCTCTTCATCAGAGGTGCATCGGGCTGAACGTGGTACCATGGCCATGGAGCACTAC
 CAGCAGCCCCAGATTCTGGATGAGGCTCTGAAGATCTGCAACTACATCTTCACTGTCTATCTTTGCTTGG
 AGTCAGTTTTCAAACCTTGTGGCCTTTGGTTCCGTCGGTCTTCCAGGACAGGTGGAACCAAGCTGGACCT
 GGCCATTTGTGCTGCTGTCCATCATGGGCATCACGCTGGAGGAAATCGAGGTCAACGCCTCGCTGCCCATC
 AACCCACCATCATCCGCATCATGAGGGTGTGCGCATTGCCCGAGTGTGAAGCTGTGAAGATGGCTG

TGGGCATGCGGGCGCTGCTGGACACGGTATGCAGGCCCTGCCCCAGGTGGGGAACCTGGGACTTCTCTT
CATGTTGTTGTTTTTCATCTTTGCAGCTCTGGGCGTGGAGCTCTTTGGAGACCTGGAGTGTGACGAGACA
CACCCCTGTGAGGGCCTGGGCCGTATGCCACCTTTGGAACTTTGGCATGGCCTTCTAACCTCTTCC
GAGTCTCCACAGGTGACAATTGGAATGGCATTATGAAGGACACCCTCCGGGACTGTGACCAGGAGTCCAC
CTGCTACAACACGGTCACTCGCCTATCTACTTTGTGTCTTCGTGCTGACGGCCAGTTCGTGCTAGTC
AACGTGGTGATCGCCGTGCTGATGAAGACCTGGAGGAGAGCAACAAGGAGGCCAAGGAGGAGGCCGAGC
TAGAGGCTGAGCTGGAGCTGGAGATGAAGACCTCAGCCCCAGCCCCACTCGCCACTGGGCAGCCCTT
CCTCTGGCCTGGGTCGAGGGCCCCGACAGCCCCGACAGCCCCAAGCCTGGGGCTCTGCACCCAGCGGCC
CACGCGAGATCAGCCTCCCACTTTCCCTGGAGACCCCCACGATGCAGCCCCACCCACGGAGCTGCCAG
GACCAGACTTACTGACTGTGCGGAAGTCTGGGGTCAGCCGAACGCACTCTCTGCCAATGACAGCTACAT
GTGTGGCATGGGAGCACTGCCAGGGGCCCTGGGACACAGGGGCTGGGGGCTCCCCAAAGCTCAGTCA
GGCTCCGTCTTGTCCGTTCACTCCAGCCAGCAGATACCAGCTACATCCTGCAGTTCACCAAGATGCAC
CTCATCTGCTCCAGCCCCACAGCGCCCCAACCTGGGGCACCATCCCCAACTGCCCCACCAGGACGCTC
CCCTTTGGCTCAGAGGCCACTCAGGCGCCAGGCAGCAATAAGGACTGACTCCTTGGACGTTCAGGGTCTG
GGCAGCCGGGAAGACCTGCTGGCAGAGGTGAGTGGGCCCTCCCCGCCCTGGCCCGGGCCTACTCTTCT
GGGGCCAGTCAAGTACCCAGGCACAGCAGCACTCCCGCAGCCACAGCAAGATCTCCAAGCACATGACCCC
GCCAGCCCTTGCCAGGCCCAGAACCCAACTGGGGCAAGGGCCCTCCAGAGACCAGAAGCAGCTTAGAG
TTGGACACGGAGCTGAGCTGGATTTTCAGGAGACCTCCTGCCCCCTGGCGCCAGGAGGAGCCCCATCCC
CACGGGACCTGAAGAAGTGTACAGCGTGGAGGCCAGAGCTGCCAGCGCCGGCTACGTCTGGCTGGA
TGAGCAGAGGAGACACTATCGCCGTGAGTGCCTGGACAGCGGCTCCCAACCCACCTGGGCACAGAC
CCCTCTAACCTTGGGGGCCAGCCTCTTGGGGGGCCTGGGAGCCGGCCCAAGAAAAACTCAGCCCGCCTA
GTATACCATAGACCCCCGAGAGCCAAGGTCTCGGACCCCGCCAGCCCTGGTATCTGCCTCCGGAG
GAGGGCTCCGTCCAGCGACTCCAAGGATCCCTTGGCCTCTGGCCCCCTGACAGCATGGCTGCCTCGCCC
TCCCCAAGAAAGATGTGCTGAGTCTCTCCGGTTATCCTCTGACCCAGCAGACCTGGACCCC

ACGCGTACGCGGGCCTCGAGCAGAACTCATCTCAGAAGAGGATCTGGCAGCAATGATATCCTGGATT
ACAAGGATGACGACGATAAGGTTTAA

Protein Sequence: >RC210702 representing NM_198382
 Red=Cloning site Green=Tags(s)

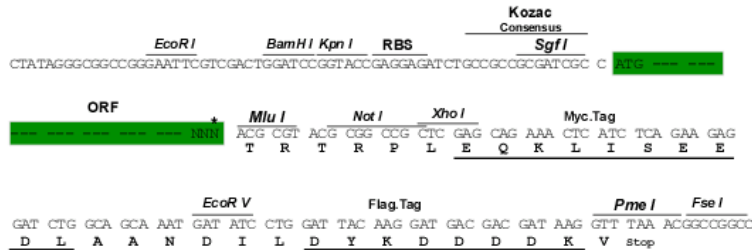
MDEEEDGAGAAESGQPRFSMRLNDLSGAGGRPGPGSAEKDPGSADSEAEGLPYPALAPVVFYLSQDSRP
 RSWCLRTVCNPWFERISMLVILLNCVTLMGFRPCEDIACDSQRCRILQAFDDFIFAFFAVEMVVKMVALG
 IFGKKCYLGDTWNRLDFFIVIAGMLEYSLDLQNVSFSAVRTVRVLRPLRAINRVPSMRILVTLLEDLTPM
 LGNVLLLCFFVFFIFGI VGVQLWAGLLRNRCFLPENFSLPLSVDLERYYTENEDESPFICSQPRENGMR
 SCRSVPTLRGDGGGPPCGLDYEAYNSSNTTCVNWQYYTNC SAGEHNPFGAINFDNIGYAWIAIFQV
 ITLEGWVDIMYFVMDAHSFYNFIFYFILLIIVGSFFMINLCLVVIATQFSETKQRESQLMREQRVRFLSNA
 STLASFSEPGSCYEELLYLVYILRKAARRLAQVSRAGVRVGLLSSPAPLGGQETQPSSSCSRSHRRLS
 VHHLVHHHHHHHHYHLGNGTLRAPRASPEIQDRDANGSRRLMLPPPSTPALSGAPPGGAESVHSFYHAD
 CHLEPVRCAQAPPRSPSEASGRTVGSGKVVYPTVHTSPPPETLKEKALVEVAASSGPPTL TSLNIPPGPYS
 SMHKLLETQSTGACQSSCKISSPCLKADSGACGPDSCPYCARAGAGEVELADREMPDSDSEAVYEFQDA
 QHSDLRDPHSRRQRSLGPAEPSSVLAFWRLICDTRFKIVDSKYFGRGIMIAILVNTLSMGIEYHEQPEE
 LTNALEISNIVFTSLFALEMLLKL VYGPFYIKNPYINIFDGVIVVISVWEIVGQGGGLSVLRTFRMLR
 VLKLVRFLPALQRQLVVLMTMDNVATFCMLLMLFIFIFISILGMHLFGCKFASERDGDTL PDRKNFDSLL
 WAIIVTVFQILTQEDWNKVL YNGMASTSSWAALYFIALMTFGNYVLFNLLVAILVEGFQAEGDANKSESEP
 DFFSPSLDGDGDRKKCLALVSLGEHPELRKSLPLPIIHTAATPMSLPKSTSTGLGEALGPASRRTSSSG
 SAEPGAAHEMKSPPSARSSPHSPWSAASWTSRRSSRNSLGRAPSLKRRSPSGERRSLLSGEGQESQDEE
 ESSEERASPAGSDHRRHRSLEREAKSSFDPDTLQVPLHRTASGRGSAEHQDCNGKSASGRLARALR
 PDDPPLDGDADDEGNLSKGERVRAWIRARLPACCLERDSWSAYIFPPQSRFRLCHR IITHKMFHDHVLL
 VILSVIDILVSMVSDSGTKILGMLRVLRLRTRLRPLRVI SRAQGLKLVETLMSSLKPIGNIVVICAFF
 IIFGILGVQLFKGKFFVCQGEDTRNITNKSDCAEASYRWRHKYNFDNLGQALMSL FVLASKDGWVDIMY
 DGLDAVGVDQQPMNHNPMWMLLYFISFLI VAFFVLNMFVGVVVENFHKCRQHQEEEEARRREEKRLRRL
 EKKRRNLMLDDV IASGSSASAASEAQCKPYSDYSRFRLLVHHLCTSHYLDL FITGVI GLNVVTMAMEHY
 QQPQILDEALKICNYIFTVIFVLESVFKLVAFGFRFFQDRWNQLDLAIVLLSIMGITLEEIEVNASLPI
 NPTIIRIMRVLRIARVLKLLKMAVGMRALLDTVMQALPQVGNLGLLFMLFFIFAALGVELFGDLECDT
 HPCEGLGRHATFRNFGMAFLTLFRVSTGDNWNGIMKDTLRDCDQESTCYNTVISPIYFVSFVLT AQFVLV
 NVVIAVLMKHLEESNKEAKEEAELEAELEEMKTLSPQPHSPLGSPFLWPGVEGPDSPD SPKPGALHPAA
 HARSASHFSLEHPTMQPHTELPGPDLLTVRKS GVSRT HSLPNDSYMCRHGSTAEGLGHRGWGLPKAQS
 GSVLSVHSQPADTSYILQLPKDAPHLLQPHSAPTWGTIPKLPPGGRSPLAQRPLRRQAAIRTDSDLVQGL
 GSREDLLAEVSGSPPLARAYSFWQSS TQAQQHSRSHSKISKHMTTPAPCPGPEPNWKGPPETRSLE
 LDELTSWISGDLPPGGQEPPSPRDLKCY SVEAQSCQRRPTSWLDEQRRHSIAVSCLD SSGSQPHLGTD
 PSNLGGQPLGGPGSRPKKLSPPSITIDPPESQGPRTPPSPGICLRRRAPSSDSK DPLASGPPDSMAASP
 SPKKDVL SLSGLSSDPADLDP

TRTRPLEQKLISEEDLAANDILDYKDDDDKV

Restriction Sites: Sgfl-MluI

Cloning Scheme:

Cloning sites used for ORF Shutting:



* The last codon before the Stop codon of the ORF

ACCN: NM_198382

ORF Size: 6783 bp

OTI Disclaimer: The molecular sequence of this clone aligns with the gene accession number as a point of reference only. However, individual transcript sequences of the same gene can differ through naturally occurring variations (e.g. polymorphisms), each with its own valid existence. This clone is substantially in agreement with the reference, but a complete review of all prevailing variants is recommended prior to use. [More info](#)

OTI Annotation: This clone was engineered to express the complete ORF with an expression tag. Expression varies depending on the nature of the gene.

Components: The ORF clone is ion-exchange column purified and shipped in a 2D barcoded Matrix tube containing 10ug of transfection-ready, dried plasmid DNA (reconstitute with 100 ul of water).

Reconstitution Method:

1. Centrifuge at 5,000xg for 5min.
2. Carefully open the tube and add 100ul of sterile water to dissolve the DNA.
3. Close the tube and incubate for 10 minutes at room temperature.
4. Briefly vortex the tube and then do a quick spin (less than 5000xg) to concentrate the liquid at the bottom.
5. Store the suspended plasmid at -20°C. The DNA is stable for at least one year from date of shipping when stored at -20°C.

RefSeq: [NM_198382.2](#)
RefSeq Size: 7477 bp

RefSeq ORF: 6786 bp

Locus ID: 8913

UniProt ID: [O43497](#)

Cytogenetics: 17q21.33

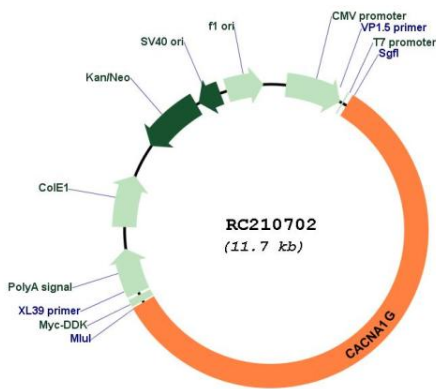
Protein Families: Druggable Genome, Ion Channels: Calcium, Transmembrane

Protein Pathways: Calcium signaling pathway, MAPK signaling pathway, Type II diabetes mellitus

MW: 250 kDa

Gene Summary: Voltage-sensitive calcium channels mediate the entry of calcium ions into excitable cells, and are also involved in a variety of calcium-dependent processes, including muscle contraction, hormone or neurotransmitter release, gene expression, cell motility, cell division, and cell death. This gene encodes a T-type, low-voltage activated calcium channel. The T-type channels generate currents that are both transient, owing to fast inactivation, and tiny, owing to small conductance. T-type channels are thought to be involved in pacemaker activity, low-threshold calcium spikes, neuronal oscillations and resonance, and rebound burst firing. Many alternatively spliced transcript variants encoding different isoforms have been described for this gene. [provided by RefSeq, Sep 2011]

Product images:



Circular map for RC210702