

## Product datasheet for RC210701

### C1orf187 (DRAXIN) (NM\_198545) Human Tagged ORF Clone

#### Product data:

Product Type:	Expression Plasmids
Product Name:	C1orf187 (DRAXIN) (NM_198545) Human Tagged ORF Clone
Tag:	Myc-DDK
Symbol:	C1orf187
Synonyms:	AGPA3119; C1orf187; neucrin; UNQ3119
Mammalian Cell Selection:	Neomycin
Vector:	pCMV6-Entry (PS100001)
E. coli Selection:	Kanamycin (25 ug/mL)
ORF Nucleotide Sequence:	>RC210701 ORF sequence Red=Cloning site Blue=ORF Green=Tags(s)

TTTTGTAATACGACTCACTATAGGGCGGCCGGAATTCGTCGACTGGATCCGGTACCGAGGAGATCTGCC  
GCC**CGATCGCC**

ATGGCTGGGCCTGCCATCCACACCGCTCCCATGCTGTTCCCTCGTCTCTGCTGCCCTGGAGCTGAGCC  
TGGCAGGCGCCCTTGACCTGGGACCCCTGCCCGAACCTCCCTGAGAATCACATTGACCTCCCAGGCC  
AGCGCTGTGGACGCTCAGGCCAGCCACCACCGCCGGGGCCCGGCAAGAAGGAGTGGGCCCAGGC  
CTGCCAGCCAGGCCAGGATGGGGCTGTGGTACCGCCACCAGGCAGGCTCCAGGCTGCCAGAGGCTG  
AGGGGCTGCTGCCTGAGCAGAGTCTGCAGGCTGCTGCAGGACAAGGACCTGCTCCTGGGACTGGCATT  
GCCCTACCCCGAGAAGGAGAACCAGCTCCAGGTTGGGAGAGGACCAGGAAACGCAGCAGGAGCACAAG  
AGACGCAGGGACAGGTTGAGGCTGCACCAAGGCCGAGCCTTGGTCCGAGGTCCCAGCTCCCTGATGAAGA  
AGGCAGAGCTCTCCGAAGCCAGGTGCTGGATGCAGCCATGGAGGAATCCTCCACCAGCCTGGCGCCAC  
CATGTTCTTTCTCACCACCTTTGAGGCAGCACCTGCCACAGAAGAGTCCCTGATCCTGCCGTCACCTCC  
CTGCGGCCCCAGCAGGCACAGCCAGGTCTGACGGGGAGGTGATGCCACGCTGGACATGGCCTTGTTTCG  
ACTGGACCGATTATGAAGACTTAAAACCTGATGGTTGGCCCTCTGCAAAGAAGAAAGAGAAAACCCGCG  
TAAACTCTCCAGTGATGGTAACGAAACATCACCAGCCGAAGGGGAACCATGCGACCATCACCAAGACTGC  
CTGCCAGGGACTTGCTGCGACCTGCGGGAGCATCTGACACCCCAACCGAGGCTCAACAACAAAT  
GCTTCGATGACTGCATGTGTGGAAGGCTGCGCTGCTATGCCAAATTCACCAGGAAACCGAGGGTTAC  
ACGGAGGAAAGGGCCTGTGTGGAGCCGAGACGGCCAACGGCGACCAGGGATCCTTCATCAACGTC

**ACGCGT**ACGCGGCCGCTCGAGCAGAAACTCATCTCAGAAGAGGATCTGGCAGCAATGATATCCTGGATT  
ACAAGGATGACGACGATAAGGTTTAA



[View online »](#)

**Protein Sequence:** >RC210701 protein sequence  
Red=Cloning site Green=Tags(s)

MAGPAIHTAPMLFLVLLLPLELSLAGALAPGTPARNLPENHIDLPGPALWTPQASHRRRGGPKKEWGPGLPSQAQDGA VVTATRQASRLPEAEGLLPEQSPAGLLQDKDLLLGLALPYPEKENRPPGWERTKRKRSREHKRRRDRLRLHQGRALVRGPSSLMKKAELSEAQVLDAAAMEESSTSLAPTMMFLLTTFEAAPATEESLILPVTSLRPQQAQPRSDGEVMPPTLDMALFDWTDYEDLKPDGWPSAKKKEKHRGKLSSDGNETSPAEGEPCDHHQDCLPGTCCDLREHLCTPHNRGLNKKCFDDCMCVEGLRCYAKFHRNRRVTRRKGRCEPETANGDQGSFINV

TRTRPLEQKLISEEDLAANDILDYKDDDDKV

**Chromatograms:** [https://cdn.origene.com/chromatograms/mk6377\\_g09.zip](https://cdn.origene.com/chromatograms/mk6377_g09.zip)

**Restriction Sites:** SgfI-MluI

**Cloning Scheme:**



**ACCN:** NM\_198545

**ORF Size:** 1047 bp

**OTI Disclaimer:** The molecular sequence of this clone aligns with the gene accession number as a point of reference only. However, individual transcript sequences of the same gene can differ through naturally occurring variations (e.g. polymorphisms), each with its own valid existence. This clone is substantially in agreement with the reference, but a complete review of all prevailing variants is recommended prior to use. [More info](#)

**OTI Annotation:** This clone was engineered to express the complete ORF with an expression tag. Expression varies depending on the nature of the gene.

**Components:** The ORF clone is ion-exchange column purified and shipped in a 2D barcoded Matrix tube containing 10ug of transfection-ready, dried plasmid DNA (reconstitute with 100 ul of water).

**Reconstitution Method:**

1. Centrifuge at 5,000xg for 5min.
2. Carefully open the tube and add 100ul of sterile water to dissolve the DNA.
3. Close the tube and incubate for 10 minutes at room temperature.
4. Briefly vortex the tube and then do a quick spin (less than 5000xg) to concentrate the liquid at the bottom.
5. Store the suspended plasmid at -20°C. The DNA is stable for at least one year from date of shipping when stored at -20°C.

**RefSeq:** [NM\\_198545.4](#)

**RefSeq Size:** 1773 bp

**RefSeq ORF:** 1050 bp

**Locus ID:** 374946

**UniProt ID:** [Q8NBI3](#)

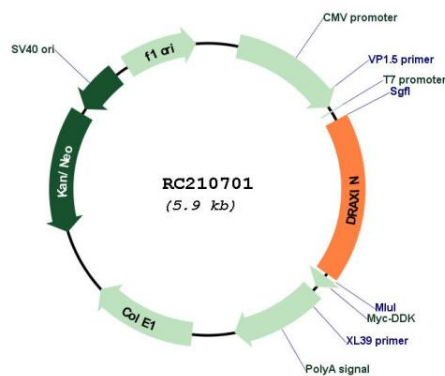
**Cytogenetics:** 1p36.22

**Protein Families:** Secreted Protein, Transmembrane

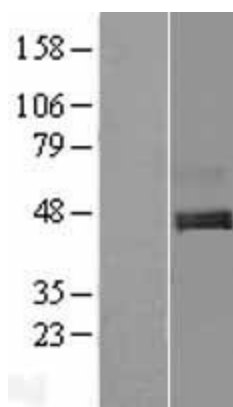
**MW:** 38.6 kDa

**Gene Summary:** Chemorepulsive axon guidance protein required for the development of spinal cord and forebrain commissures. Acts as a chemorepulsive guidance protein for commissural axons during development. Able to inhibit or repel neurite outgrowth from dorsal spinal cord. Inhibits the stabilization of cytosolic beta-catenin (CTNNB1) via its interaction with LRP6, thereby acting as an antagonist of Wnt signaling pathway.[UniProtKB/Swiss-Prot Function]

## Product images:



Circular map for RC210701



Western blot validation of overexpression lysate (Cat# [LY404847]) using anti-DDK antibody (Cat# [TA50011-100]). Left: Cell lysates from untransfected HEK293T cells; Right: Cell lysates from HEK293T cells transfected with RC210701 using transfection reagent MegaTran 2.0 (Cat# [TT210002]).