

## Product datasheet for **RC210699**

### NDUF3 (NDUFAF3) (NM\_199069) Human Tagged ORF Clone

#### Product data:

**Product Type:** Expression Plasmids  
**Product Name:** NDUF3 (NDUFAF3) (NM\_199069) Human Tagged ORF Clone  
**Tag:** Myc-DDK  
**Symbol:** NDUF3  
**Synonyms:** 2P1; C3orf60; E3-3; MC1DN18  
**Mammalian Cell Selection:** Neomycin  
**Vector:** pCMV6-Entry (PS100001)  
**E. coli Selection:** Kanamycin (25 ug/mL)  
**ORF Nucleotide Sequence:** >RC210699 ORF sequence  
Red=Cloning site Blue=ORF Green=Tags(s)

TTTTGTAATACGACTCACTATAGGGCGGCCGGAATTCGTCGACTGGATCCGGTACCGAGGAGATCTGCC  
GCC**CGGATCGCC**

ATGTACATCGACAGCTACAACAGCCGGCTTCATGATAAACGGAAACCGGTGCTCGGCCCTGCGCTC  
TGCTCCCGCACTCGGTGGTGCAGTGGACGTGGGATCCCACCAGGACATCACCGAAGACAGCTTTCCCT  
CTTCTGGTTGCTGGAGCCCGGATAGAGATCGTGGTGGTGGGACTGGAGACCGGACCGAGAGGCTGCAG  
TCCCAGGTGCTTCAAGCCATGAGGCAGCGGGCATTGCTGTGGAAGTGCAGGACACGCCCAATGCCTGTG  
CCACCTTCAACTTCTGTGTATGAAGCCGAGTAACTGGAGCTGCTCTCATCCCTCCACCAGGAGGAC  
TCACTTACATCTTTGGCCAAGCTGCTCAA

**ACGCGT**ACGCGGCCGCTCGAGCAGAACTCATCTCAGAAGAGGATCTGGCAGCAAATGATATCCTGGATT  
ACAAGGATGACGACGATAAGGTTTAA

**Protein Sequence:** >RC210699 protein sequence  
Red=Cloning site Green=Tags(s)  
MYIDSYNSRGMINGNRVLGPCALLPHSVVQWNVGSHQDITEDSFSLFWLLEPRIEIVVVGTDGRTERLQ  
SQVLQAMRQRGIAVEVQDTPNACATFNFLCHEGRVTGAALIPPPGGTSLTSLGQAAQ

**TR**TRPLEQK**L**ISEEDLAANDILDYKDDDDKV

**Chromatograms:** [https://cdn.origene.com/chromatograms/mk6544\\_d07.zip](https://cdn.origene.com/chromatograms/mk6544_d07.zip)

**Restriction Sites:** SgfI-MluI



[View online »](#)

**Cloning Scheme:**


**ACCN:** NM\_199069

**ORF Size:** 381 bp

**OTI Disclaimer:** The molecular sequence of this clone aligns with the gene accession number as a point of reference only. However, individual transcript sequences of the same gene can differ through naturally occurring variations (e.g. polymorphisms), each with its own valid existence. This clone is substantially in agreement with the reference, but a complete review of all prevailing variants is recommended prior to use. [More info](#)

**OTI Annotation:** This clone was engineered to express the complete ORF with an expression tag. Expression varies depending on the nature of the gene.

**Components:** The ORF clone is ion-exchange column purified and shipped in a 2D barcoded Matrix tube containing 10ug of transfection-ready, dried plasmid DNA (reconstitute with 100 ul of water).

- Reconstitution Method:**
1. Centrifuge at 5,000xg for 5min.
  2. Carefully open the tube and add 100ul of sterile water to dissolve the DNA.
  3. Close the tube and incubate for 10 minutes at room temperature.
  4. Briefly vortex the tube and then do a quick spin (less than 5000xg) to concentrate the liquid at the bottom.
  5. Store the suspended plasmid at -20°C. The DNA is stable for at least one year from date of shipping when stored at -20°C.

**RefSeq Size:** 1387 bp

**RefSeq ORF:** 555 bp

**Locus ID:** 25915

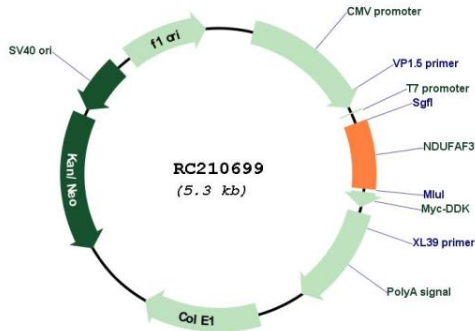
**UniProt ID:** [Q9BU61](#)

**Cytogenetics:** 3p21.31

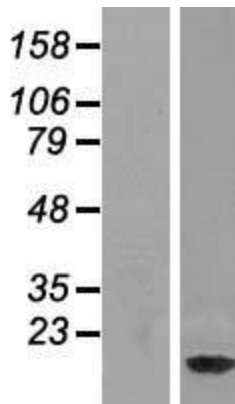
**MW:** 13.8 kDa

**Gene Summary:** This gene encodes a mitochondrial complex I assembly protein that interacts with complex I subunits. Mutations in this gene cause mitochondrial complex I deficiency, a fatal neonatal disorder of the oxidative phosphorylation system. Alternatively spliced transcript variants encoding different isoforms have been identified. [provided by RefSeq, Jul 2009]

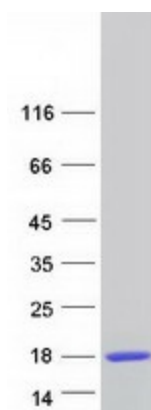
**Product images:**



Circular map for RC210699



Western blot validation of overexpression lysate (Cat# [LY404729]) using anti-DDK antibody (Cat# [TA50011-100]). Left: Cell lysates from untransfected HEK293T cells; Right: Cell lysates from HEK293T cells transfected with RC210699 using transfection reagent MegaTran 2.0 (Cat# [TT210002]).



Coomassie blue staining of purified NDUF3 protein (Cat# [TP310699]). The protein was produced from HEK293T cells transfected with NDUF3 cDNA clone (Cat# RC210699) using MegaTran 2.0 (Cat# [TT210002]).