

Product datasheet for RC210686

Phospholipase c eta 1 (PLCH1) (NM_014996) Human Tagged ORF Clone

Product data:

Product Type:	Expression Plasmids
Product Name:	Phospholipase c eta 1 (PLCH1) (NM_014996) Human Tagged ORF Clone
Tag:	Myc-DDK
Symbol:	PLCH1
Synonyms:	PLC-L3; PLC eta 1; PLCL3
Vector:	pCMV6-Entry (PS100001)
E. coli Selection:	Kanamycin (25 ug/mL)
Cell Selection:	Neomycin
ORF Nucleotide Sequence:	>RC210686 representing NM_014996 Red=Cloning site Blue=ORF Green=Tags(s)

TTTTGTAATACGACTCACTATAGGGCGCCGGAATTCGTCGACTGGATCCGGTACCGAGGAGATCTGCC
GCC**CGATCGCC**

ATGAGTGTGATGCAGTCCGGGACACAGATGATCAAGCTGAAACGTGGAACCAAAGGGCTTGCCGCTCT
TTTACCTGGATGAGCACCAGGACACGCCTCCGATGGCGACCCTTAGGAAGAGTGAGAAGGCCAAAAATACT
TATTGATTCCATTACAAAGTACTGAGGGCCGCGCAGTCTGAAATATTCCACAGACAAGCTGAGGGGAAC
TTCGACCCAGCTGCTGCTTACCATCTACCATGGCAACCACATGGAGTCCCTGGACCTCATCACCTCCA
ACCCCGAGGAGGCCCGCACCTGGATCACAGGCCTCAAGTACCTGATGGCTGGCATCAGTGATGAAGACTC
CCTTGCCAAAAGGCAGAGGACCCATGACCAATGGGTGAAGCAGACCTTTGAGGAAGCTGATAAGAATGGT
GACGGCTTGCTGAATATTGAAGAGATACATCAGCTGATGCATAAACTGAATGTTAATCTGCCCGAAGAA
AAGTCAGACAAATGTTTCAGGAAGCCGACACAGATGAGAATCAGGGAACCTTGACATTTGAAGAGTTCTG
TGTTTTTTACAAAATGATGTCTTTGAGACGAGACCTTTATTTGTTACTTTTGAGCTACAGTGACAAGAAA
GATCACCTAACTGTGAAGAAGTGGCTCAGTTTTTGAAGTGGAGCAAAGATGAATAATGTGACAACGG
ACTATTGTCTTGACATCATAAAGAAGTTTGAAGTTTCAGAAGAAAATAAGGTGAAAAATGTTCTTGGCAT
AGAAGGCTTACGAACCTCATGCGTAGTCTGCCTGTGACATATTTAACCCATTGCACCATGAAGTGATC
CAAGACATGGATCAGCCCTCTGCAACTACTACATTGCTTCTCTCACAATACATACCTGACTGGAGACC
AGCTCCTTTCTCAGTCCAAAGTGGATATGTATGCACGGGTGCTGCAAGAGGGCTGTGCTGTGTGGAAGT
TGACTGTTGGGATGGCCAGATGGAGAGCCAGTAGTACATCATGGTTACTCTCACTTCAAAAATTCTC
TTCAGAGATGTTGTGGAGACCATCAACAAGCATGCCTTTGTGAAGAATGAGTTTCTGTTATATTGTCTA
TCGAGAATCACTGCAGTATCCAGCAGCAAAGGAAGATTGCTCAGTACCTGAAAGGAATATTCGGAGACAA
ACTGGACCTGTCATCTGTTGATACAGGGGAGTGAAGCAGCTTCCAAGCCCTCAAAGTTTGAAGGCAAA
ATTCTAGTGAAGGTAAGAAGTTGCCTTATCACCTTGGGGATGATGCAGAGGAAGGGGAAGTTTCTGATG
AGGACAGTGCAGATGAAATTGAAGACGAGTGCAAATTCAGCTCCATTATAGTAATGGGACCACTGAGCA
TCAGGTGGAATCTTTCATAAGGAAAAAACTGGAGTCACTGTTAAAAGAATCTCAAATTCGAGATAAGAA
GATCCTGATAGTTTACAGTGCGGGCACTACTGAAGGCCACGCATGAAGGCTTAAATGCACACCTGAAGC



AGAGTCCAGATGTAAGGAAAGTGGAAAGAAATCACATGGACGATCCCTCATGACCAACTTTGGAAAACA
 TAAGAAAACACAAAATCACGGTCTAAATCTTACAGTACTGATGATGAGGAAGACACACAGCAGAGTACT
 GGCAAGGAGGGTGGCCAGCTGTACAGATTGGGTGCGCCGAAGGAAAACCATGAAGCTCTGCCGAGAACTCT
 CTGATTTGGTTGTGTACACAACTCCGTGGCCGCTCAGGACATTTGTGGATGACGGAACCACAGGAAATGT
 GTTATCATTCAAGTAAACAAGAGCACATCAGGTTGTTGAGCAAAAATCAGAGCAGTTCATGATTTATAAT
 CAAAAGCAACTCACGAGGATTTACCCCTCTGCCTACCCGATTGATTCCAGTAACTCAACCCTCTCCCT
 ACTGGAACGCAGGCTGCCAGCTAGTGGCACTGAATTATCAATCTGAAGGACGAATGATGCAAGTTAAACCCG
 AGCCAAAATCAAGGCAAATGGCAATTGTGGCTATGTCTCAAACCCAGCAAATGTGCAAAGGTACTTTT
 AACCCCTTCTCTGGTGACCCCTTCTGCAACCCCAAAAAGCAGCTCATCTGAAAGTTATCAGTGGAC
 AGCAACTCCCAACCTCCAGACTCCATGTTTGGAGATCGAGGCGAGATCATTGACCCTTTTGTGAAAGT
 TGAAATTATTGGATTGCCAGTAGATTGTTGTAAGATCAAACCCGTGTGGTAGATGACAATGGATTTAAC
 CCTGTGTGGGAAGAACTGACATTTACAGTACACATGCCAGAAATAGCTTTGGTTGCGTTCCTGTGT
 GGGATCACGATCCATTGGACGAGACTTGTGGACAAAGAACTGTGACCTTCAGCAGCTTAGTGCCTGG
 CTACCGGCATGTCTATTTGGAAGGACTGACAGAAGCATCCATATTTGTACACATAACCATCAATGAAATC
 TATGGAAGAAGACAGCAACTCCAGGGTCTGAAGGGACTGTTCAATAAGAATCCTAGGCACAGTTCCTCAG
 AAAACAATCCCATTATGTACGGAAGCGATCCATTGGAGATAGAATTCTGCGACGCACAGCTAGCGCCCC
 AGCCAAAGGCAGGAAAAAGAGCAAAATGGGCTTCCAAGAAATGGTGGAGATAAAGGATTCTGTGTCGGAG
 GCCACAAGAGATCAAGATGGCGTGTGAGGAGGACCACACGCAGTTTGAAGCACGCCCTGTCTCTATGC
 CTGTTGACAGAAACCTTCTGGGAGCTTTGTGCTGCCTGTATCTGAAACAGCAAAAAGACATTGAAGGAAA
 AGAAAACCTCTAGCAGAAGATAAAGATGGCAGAAGAAAAGGAAAGCAAGTATAAAGATCCACATTTT
 CTAATTTCAACAAAAGTTATCATCTCTCCAGTGTCTGCTCCACAAAGATACCAGCCAAGGGGACA
 CCATTGTATCTACTGCCACATGTCAGTACAGGAGAACAGCTGGGCATGTCAAGTCTAGGGGTGGGAG
 AACCATCAAAATGCCACAAGCAATTGCCAGGAAAACCCCTGTCCAGCAAGTCTCTCTCCCAAGCAG
 CATTTGGCTCCCGATCCTGTAGTTAACCCACACAAAGATCTGCATGGTGTGAAAAATCAAGGAAAAGGGTA
 ATCCTGAGGACTTTGTGGAAGGAAAAGCATCTTGTGAGGAAGCGTCTTTCTCATAGCAACCTAGAAAT
 TAAGAACCTGGAAGGTAATAGGGTAAGGGCCGAGCTGCAACATCCTTTTCTTTGTGAGAGTCTCCATG
 CTCTGTTCTGACATACCTGACCTACATTCAACTGCAATTCTGCAGGAGAGTGAATTTCCCATCTTATTG
 ACAATGTCACTTTAAACAATGAGAATGAGCCGGGCAGTTCATCTCAGCCCTGATTGGCCAGTTTGATGA
 GACCAACAATCAGGCTCTCACAGTTGTTTCTCATCTTATAATACCAGTGTGATGTCAGGCCATTGTCCC
 TTGCTAGCCTGGGCTAAAAATGCCATCAAGCATGGTTTTTGAAGGAAAAATCCAAGTCTTCCCTCC
 TGTGCTCATCTCCGGAGCTGATAGCACTCTCGAGTTCTGAGACCACAAACATGCAACGAACACAGTTTA
 TGAAACTACCTGCACTCCATCTCTAAAACCAACCAGATGATGACCTTTCTAGTAAGGCCAAGACAGCG
 GCCTTAGAAAGCAACCTGCCTGGATCCCCTAATACTTCTCGTGGCTGGTTACAAAAAGTCTACCAAGG
 GAGAAGACTGGGAAACACTGAAGAGCTGCAGCCCTGCCTCTTCCCTGATTTGACCTGGAGGATGTAAT
 AGCTGATCCCCTCTCTGTTTCAATTCTGGGGAGAGCAGCCTGTGGAAATTGATGGAGAATCAGAAAAAT
 CTTTCTTAACAACCTGTGAATATAGGAGAGAGGGCACAAAGTCAACTGCTTCTCCTTTAAACTCAAGT
 ACAATCAGGGTGTGGTAGAACACTTTCAAAGAGGTTTGAAGAACGGCTACTGTAAGAGACCCTCCGCC
 TTCTGTCCCTGAAATATCAACAATATCAAGATGTCAAACTCAAAGTATTTCTATCTAGCCTATCAG
 GGTGCTGGCTTTGTGCATAATCATTTCTCAGATTCAGATGCAAAAATGTTCCAGACCTGTGTGCCCGAGC
 AATCTAGTGCTCAAGATATGCATGTCCCTGTACCAAGCAGTTGGCACATCTTCTTTGCTGCTCTGAA
 ACTGCCTAGTCTTGCAATCCAAAAGTCTGGGGACTTAACATCAGAGGACATTGCCTGCAATTTTGGAG
 AGCAAGTACCAGTGTATTAGTAAGAGTTTTGTTACAACCTGGCATTAGAGACAAGAAGGGCGTACTGTGA
 AGACAAAGTCGTTAGAGCCTATAGATGCCCTGACCGAGCAGCTTCGGAAGCTTGTGCTTTTACCAGGA
 AGACAACCTGCAAGTGTATATTCAAAGCAGGATGCCAATCAGCTCCCCGGGCACTGGTCAGGAAGTTG
 TCATCCAGAAGTCAGAGCAGAGTGCCTAATTGCTAGTCTGCCAAGGAGAAACAGGAAGCCAACAAGC
 AGAAAGTTCAAAACCCAGCAATGGGGCAGGAGTGGTTCTTAGAAACAAACCTCAGCACCCACCCTGC
 AGTGAATCGCCACTCCACCGCTCTACATCGCAGGCTACTGAAGAACACGAAAGGGGGTGGCCTTGAA
 GGCCGGGGCATCCAGAGGGGGCATGCAGGCTCTTCACTATGGCCACGTTGACCAGTTTTGTTTCAGATA
 ATCTGTTTTGACAGACTGAGCAAGCAGTATGATAAACCAGAAATTTATTTTCTTTTGGAGACTG

ACGCGTACGCGGCCGCTCGAGCAGAACTCATCTCAGAAGAGGATCTGGCAGCAAATGATATCCTGGATT
 ACAAGGATGACGACGATAAGGTTTAA

Protein Sequence: >RC210686 representing NM_014996
 Red=Cloning site Green=Tags(s)

```
MSVMQSGTQMIKLKRGTGKLVRLFYLDEHRTLRLWRPSRKSEKAKILIDSIYKVTEGRQSEIFHRQAEGN
FDPSCCF TIYHGNHMSLDLITSNP EEAR TWTGLKYL MAGISDEDSLAKRQRTHDQVWKQTFEEADKNG
DGLLNIEEIQLMHKLNVNLP RRKVRQMFQEADTDENQGTLT FEEFCVFYKMMSLRRDL YLLLLSYSDKK
DHLTVEELAQFLKVEQKMNVT TDYCLDI IKKFEVSEENKVKNVLGIEGF TNFMRSPACDIFNPLHHEVY
QDMQPLCNYYIASSHNTYLTDGQLLSQSKVDMYARVLQEGCRCVEVDCWDGPDGEPVVHHGYTLT SKIL
FRDVVETINKHAFVKNEFPVILSIENHCSIQQQRKIAQYLKGF GDKLDLSSVDTGECKQLPSPQSLK GK
ILVKGKLPYHLGDDAEEGEVSDEDSADEIEDECKFKLHYSNGTTEHQVESFIRKKLESLLKESQIRDE
DPDSFTVRALLKATHEGLNAHLKQSPDVKESGKSHGRSLMTNFGKHKTTKSRKSYSTDDEEDTQQST
GKEGGQLYRLGRRRTM KLCRELSDLV VYTNSVAAQDIVDDGTTGNVLSFSETRAHQVVQKSEQFMIYN
QKQLTR IYPSAYRIDSSNFNPLPYWNAGCQLVALNYQSEGRMMQLNRAKFKANGNCGYVLK PQQMCKGTF
NPFSGDPLPANPKKQLILKVISGQQLPKPPDSMF GDRGEIIDPFVEVEIIGLPVDCCKDQTRVVDNGFN
PVWEETLTFTVHMP EIALVRFLVWDHDP IGRDFV GQRTVTFSSLVPGYRHVYLEGLTEASIFVHITINEI
YGKNRQLQGLKGLFNKNPRHSSSENNSHYVRKRSIGDRILRR TASAPAKGRKSKMGFQEMVEIKDSVSE
ATRDQDGLVLRRTTRSLQARPVSM PVDNRLLGALS LPVSETAKDIEGKENS LAEDKDGRRKGKASIKDPHF
LNFNKKLSSSSSALLHKDTSQGD TIVSTA HMSVTGEQLGMSSPRGRTTSNATSNCQENPCPSKSLSPKQ
HLADPDPV VNP TQDLHGVIKEKGNPEDFVEGKSILSGSVLSHSNLEIKNLEGNRGKGRAATSFSLSDVSM
LCSDIPDLHSTAILQESVISHLIDNVTLTNENEPGSSISALIGQFDETNQALTVVSHLHNTSVMSGHCP
LPSLGLKMP IKHGFCKGKSKSSFLCSSPELIALSSETTKHATNTVYETTCTPI SKTKPDDDLSSKAKTA
ALESNLPGSPNTSRGWLPKSPTKGEDWETLKSCSPASSPDLTLEDVIADPTLCFNSGESSLVEIDGENSEN
LSLTTCEYRREGTSQLASPLKLYNQGVVEHFQRGLRNGYCKETLRPSVPEIFNNIQDVKTQSI SYLAYQ
GAGFVHNHFSDSDAKMFQTCVPPQSSAQDMHVPVKQLAHLPLPALKLPSFCKSKSLGDLTSEDIACNFE
SKYQCISKSFVTTGIRDKKGVTVKTKSLEPIDALTEQLRKLVSFDQEDNCQVLYSKQDANQLPRALVRKL
SSRSQSRVRNIASRAKEKQ EANKQKVPNPSNGAGVVL RNKPSAPTPAVNRHSTG SYIAGYLKNTKGGGLE
GRGIPEGACTALHYGHVDQFCSDNSVLQTEPSSDDKPEIYFLRL
```

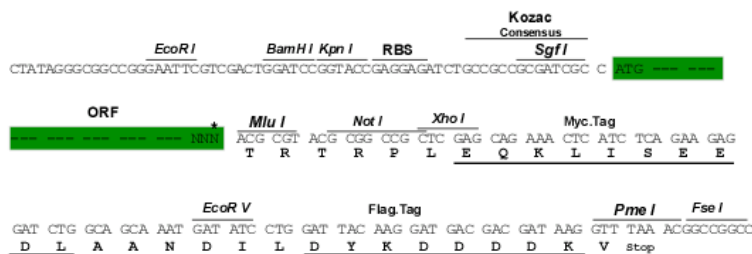
TRTRPLEQKLI SEEDLAANDILDYKDDDDKV

Restriction Sites:

SgfI-MluI

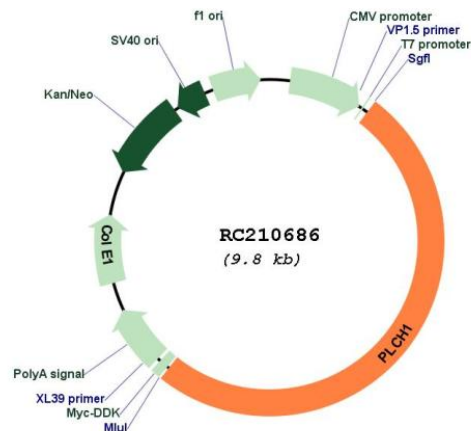
Cloning Scheme:

Cloning sites used for ORF Shuttling:



* The last codon before the Stop codon of the ORF

Plasmid Map:



ACCN: NM_014996

ORF Size: 4965 bp

OTI Disclaimer: The molecular sequence of this clone aligns with the gene accession number as a point of reference only. However, individual transcript sequences of the same gene can differ through naturally occurring variations (e.g. polymorphisms), each with its own valid existence. This clone is substantially in agreement with the reference, but a complete review of all prevailing variants is recommended prior to use. [More info](#)

OTI Annotation: This clone was engineered to express the complete ORF with an expression tag. Expression varies depending on the nature of the gene.

Components: The ORF clone is ion-exchange column purified and shipped in a 2D barcoded Matrix tube containing 10ug of transfection-ready, dried plasmid DNA (reconstitute with 100 ul of water).

Reconstitution Method:

1. Centrifuge at 5,000xg for 5min.
2. Carefully open the tube and add 100ul of sterile water to dissolve the DNA.
3. Close the tube and incubate for 10 minutes at room temperature.
4. Briefly vortex the tube and then do a quick spin (less than 5000xg) to concentrate the liquid at the bottom.
5. Store the suspended plasmid at -20°C. The DNA is stable for at least one year from date of shipping when stored at -20°C.

RefSeq: [NM_014996.2](#), [NP_055811.1](#)

RefSeq Size: 6128 bp

RefSeq ORF: 5058 bp

Locus ID:	23007
UniProt ID:	Q4KWH8
Cytogenetics:	3q25.31
Protein Families:	Druggable Genome
MW:	184.9 kDa
Gene Summary:	PLCH1 is a member of the PLC-eta family of the phosphoinositide-specific phospholipase C (PLC) superfamily of enzymes that cleave phosphatidylinositol 4,5-bisphosphate (PtdIns(4,5)P ₂) to generate second messengers inositol 1,4,5-trisphosphate (IP ₃) and diacylglycerol (DAG) (Hwang et al., 2005 [PubMed 15702972]).[supplied by OMIM, Jun 2009]