

Product datasheet for RC210685

TMEM201 (NM_001010866) Human Tagged ORF Clone

Product data:

Product Type: Expression Plasmids
Product Name: TMEM201 (NM_001010866) Human Tagged ORF Clone
Tag: Myc-DDK
Symbol: TMEM201
Synonyms: Ima1; NET5; SAMP1
Mammalian Cell Selection: Neomycin
Vector: pCMV6-Entry (PS100001)
E. coli Selection: Kanamycin (25 ug/mL)
ORF Nucleotide Sequence: >RC210685 ORF sequence
 Red=Cloning site Blue=ORF Green=Tags(s)

TTTTGTAATACGACTCACTATAGGGCGGCCGGAATTCGTCGACTGGATCCGGTACCGAGGAGATCTGCC
 GCC**CGGATCGCC**

ATGGAGGGAGTGAGCGCGCTGCTGGCCCGCTGCCCCACGGCCGGCCTGGCCGGCGGCTGGGGGTACGG
 CGTGCGCCCGGGCCGGCTGTTGCTCTACCGGATCGCGCGGAGGATGAAGCCAACGCACACGATGGTCAA
 CTGCTGGTTCTGCAACCAGGATACGCTGGTGCCCTATGGGAACCGCAACTGCTGGGACTGTCCCACTGC
 GAGCAGTACAACGGCTTCCAGGAGAACGGCGACTACAACAAGCCGATCCCCGCCAGTACTTGGAGCACC
 TGAACCACGTGGTGAGCAGCGCGCCAGCCTGCGCGACCCTTCGCAGCCGAGCAGTGGGTGAGCAGCCA
 AGTCTGCTGTGCAAGAGGTGCAACCACCAGACCACCAAGATCAAGCAGCTGGCCGCCCTTCGCTCCC
 CGCGAGGAGGGCAGGTATGACGAGGAGGTGAGGTGTACCGGCATCACCTGGAGCAGATGTACAAGTGT
 GCCGGCCGTGCCAAGCGGCTGTGGAGTACTACATCAAGCACCAGAACCAGCAGCTGCGCGCCCTGTTGCT
 CAGCCACCAGTTCAGCGCCGGGAGGCCGACCAGACCCACGCACAGAACTTCTCTCCGCGGTGAAGTCC
 CCGGTCCAGGTCACTGCTCCGTGCCCTCGCCTTCTGGCCTGCGCCTTCTACTGACCACCGCGCTGT
 ATGGGGCCAGCGGACACTTCGCCCCAGGCACCACTGTGCCCTGGCCCTGCCACCTGGTGGCAATGGCTC
 AGCCACACCTGACAATGGCACCACCCCTGGGGCCGAGGGCTGGCGGCAGTTGCTGGGCTACTCCCCGAG
 CACATGGCGGAGAAGCTGTGTGAGGCCTGGCCCTTTGGGCAGAGCCACCAGACGGCGCTGTGGCACTGG
 GCCTACTCACCTGCCTGCTGGCAATGCTGCTGGCTGGCCGATCAGGCTCCGGAGGATCGATGCCTTCTG
 CACCTGCCTGTGGCCCTGCTGCTGGGGCTGCACCTGGCTGAGCAGCACCTGCAGGCCGCCCTCGCCTAGC
 TGGCTAGACACGCTCAAGTTCAGCACCACATCTTTGTGCTGCCTGGTTGGCTTACGCGCGCTGTGGCCA
 CAAGGAAGGCAACGGGCCACGGAGGTTCCGGCCCCGAAGGTCAGAGAAGCAGCCA

ACGCGTACGCGGCCGCTCGAGCAGAACTCATCTCAGAAGAGGATCTGGCAGCAATGATATCCTGGATT
 ACAAGGATGACGACGATAAGGTTTAA



[View online >](#)

Protein Sequence: >RC210685 protein sequence
Red=Cloning site Green=Tags(s)

MEGVSALLARCPTAGLAGGLGVTACAAAGVLLYRIARRMKPTHTMVCNWFNCQDTLVPYGNRNCWDCPHC
 EQYNGFQENGDNKPIPAQYLEHLNHVSSAPSLRDPSPQPVSSQVLLCKRCNHHQTTKIKQLAAFAP
 REEGRYDEEVEVYRHHLEQMYKLCRPCQAAVEYYIKHQNRQLRALLSHQFKRREADQTHAQNFSSAVKS
 PVQVILLRALAFLACAFLLTTALYGASGHFAPGTTVPLALPPGGNGSATPDNGTTPGAEGWRQLLGLLPE
 HMAEKLCEAWAFQSHQTVVALLGLLTCLLAMLLAGRIRLRRIDAFCTCLWALLLGLHLAEQHLQAASPS
 WLDTLKFSTTSLCCLVGF TAAVATRKATGPRFRPRRSEKQP

TRTRPLEQKLISEEDLAANDILDYKDDDDKV

Chromatograms: https://cdn.origene.com/chromatograms/mk6544_f04.zip

Restriction Sites: SgfI-MluI

Cloning Scheme:



* The last codon before the Stop codon of the ORF

ACCN: NM_001010866

ORF Size: 1176 bp

OTI Disclaimer: The molecular sequence of this clone aligns with the gene accession number as a point of reference only. However, individual transcript sequences of the same gene can differ through naturally occurring variations (e.g. polymorphisms), each with its own valid existence. This clone is substantially in agreement with the reference, but a complete review of all prevailing variants is recommended prior to use. [More info](#)

OTI Annotation: This clone was engineered to express the complete ORF with an expression tag. Expression varies depending on the nature of the gene.

Components: The ORF clone is ion-exchange column purified and shipped in a 2D barcoded Matrix tube containing 10ug of transfection-ready, dried plasmid DNA (reconstitute with 100 ul of water).

Reconstitution Method:

1. Centrifuge at 5,000xg for 5min.
2. Carefully open the tube and add 100ul of sterile water to dissolve the DNA.
3. Close the tube and incubate for 10 minutes at room temperature.
4. Briefly vortex the tube and then do a quick spin (less than 5000xg) to concentrate the liquid at the bottom.
5. Store the suspended plasmid at -20°C. The DNA is stable for at least one year from date of shipping when stored at -20°C.

RefSeq: [NM_001010866.4](#)

RefSeq Size: 3912 bp

RefSeq ORF: 1179 bp

Locus ID: 199953

UniProt ID: [Q5SNT2](#)

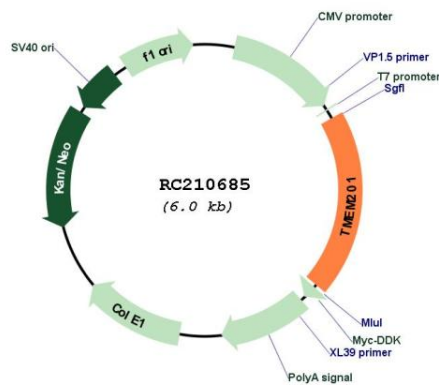
Cytogenetics: 1p36.22

Protein Families: Transmembrane

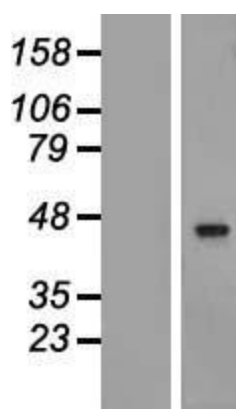
MW: 43.4 kDa

Gene Summary: Involved in nuclear movement during fibroblast polarization and migration. Proposed to be involved in actin-dependent nuclear movement via association with transmembrane actin-associated nuclear (TAN) lines which are bound to F-actin cables and couple the nucleus to retrograde actin flow (By similarity). Overexpression can recruit Ran GTPase to the nuclear periphery (PubMed:27541860).[UniProtKB/Swiss-Prot Function]

Product images:



Circular map for RC210685



Western blot validation of overexpression lysate (Cat# [LY423194]) using anti-DDK antibody (Cat# [TA50011-100]). Left: Cell lysates from untransfected HEK293T cells; Right: Cell lysates from HEK293T cells transfected with RC210685 using transfection reagent MegaTran 2.0 (Cat# [TT210002]).