

## Product datasheet for **RC210682**

### RPL36AL (NM\_001001) Human Tagged ORF Clone

#### Product data:

**Product Type:** Expression Plasmids  
**Product Name:** RPL36AL (NM\_001001) Human Tagged ORF Clone  
**Tag:** Myc-DDK  
**Symbol:** RPL36AL  
**Synonyms:** RPL36A  
**Mammalian Cell Selection:** Neomycin  
**Vector:** pCMV6-Entry (PS100001)  
**E. coli Selection:** Kanamycin (25 ug/mL)  
**ORF Nucleotide Sequence:** >RC210682 representing NM\_001001  
Red=Cloning site Blue=ORF Green=Tags(s)

TTTTGTAATACGACTCACTATAGGGCGGCCGGAATTCGTCGACTGGATCCGGTACCGAGGAGATCTGCC  
GCC**CGATCGCC**

ATGGTCAACGTACCTAAAACCCGAAGAACCTTCTGTAAGAAGTGTGGCAAGCATCAGCCTCACAAAGTGA  
CACAGTATAAGAAGGGCAAGGATCTTTGTATGCCAGGGAAGGAGGCGTATGATCGGAAGCAGAGTGG  
CTATGGTGGGCAGACAAAGCCAATTTCCGGAAGAAGGCTAAGACCACAAAGAAGATTGTGCTAAGGCTG  
GAATGTGTTGAGCCTAACTGCAGATCCAAGAGGATGCTGGCCATTAAGAGATGCAAGCATTTGAAGTGG  
GAGGAGATAAGAAGAGAAAGGGCCAAGTATCCAGTTC

**ACGCGT**ACGCGGCCGCTCGAGCAGAAACTCATCTCAGAAGAGGATCTGGCAGCAAATGATATCCTGGATT  
ACAAGGATGACGACGATAAGGTTTAA

**Protein Sequence:** >RC210682 representing NM\_001001  
Red=Cloning site Green=Tags(s)  
MVNVPKTRRTFCKKCGKHOPHKVTQYKKGKDSLVAQGRRRYDRKQSGYGGQTKPIFRKKAKTTKKIVLRL  
ECVEPNCRSKRMLAIKRCKHFELGGDKRKGQVIQF

**TR**TRPLEQKLISEEDLAANDILDYKDDDDKV

**Chromatograms:** [https://cdn.origene.com/chromatograms/mg4608\\_g09.zip](https://cdn.origene.com/chromatograms/mg4608_g09.zip)

**Restriction Sites:** SgfI-MluI



[View online »](#)

**Cloning Scheme:**


**ACCN:** NM\_001001

**ORF Size:** 318 bp

**OTI Disclaimer:** The molecular sequence of this clone aligns with the gene accession number as a point of reference only. However, individual transcript sequences of the same gene can differ through naturally occurring variations (e.g. polymorphisms), each with its own valid existence. This clone is substantially in agreement with the reference, but a complete review of all prevailing variants is recommended prior to use. [More info](#)

**OTI Annotation:** This clone was engineered to express the complete ORF with an expression tag. Expression varies depending on the nature of the gene.

**Components:** The ORF clone is ion-exchange column purified and shipped in a 2D barcoded Matrix tube containing 10ug of transfection-ready, dried plasmid DNA (reconstitute with 100 ul of water).

**Reconstitution Method:**

1. Centrifuge at 5,000xg for 5min.
2. Carefully open the tube and add 100ul of sterile water to dissolve the DNA.
3. Close the tube and incubate for 10 minutes at room temperature.
4. Briefly vortex the tube and then do a quick spin (less than 5000xg) to concentrate the liquid at the bottom.
5. Store the suspended plasmid at -20°C. The DNA is stable for at least one year from date of shipping when stored at -20°C.

**RefSeq:** [NM\\_001001.5](#)

**RefSeq Size:** 549 bp

**RefSeq ORF:** 321 bp

**Locus ID:** 6166

UniProt ID: [Q969Q0](#)

Cytogenetics: 14q21.3

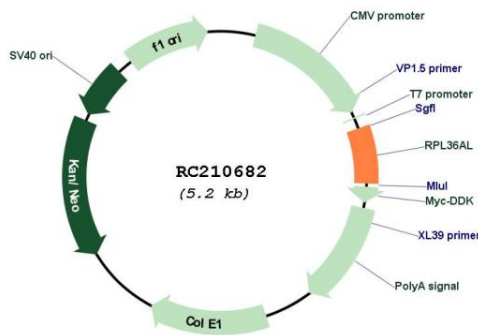
Domains: Ribosomal\_L44

Protein Pathways: Ribosome

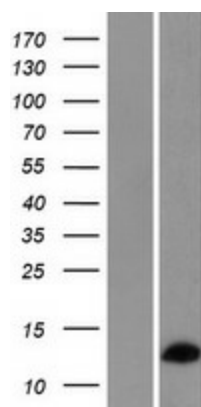
MW: 12.3 kDa

**Gene Summary:** Cytoplasmic ribosomes, organelles that catalyze protein synthesis, consist of a small 40S subunit and a large 60S subunit. Together these subunits are composed of 4 RNA species and approximately 80 structurally distinct proteins. This gene encodes a ribosomal protein that is a component of the 60S subunit. The protein, which shares sequence similarity with yeast ribosomal protein L44, belongs to the L44E (L36AE) family of ribosomal proteins. This gene and the human gene officially named ribosomal protein L36a (RPL36A) encode nearly identical proteins; however, they are distinct genes. Although the name of this gene has been referred to as ribosomal protein L36a (RPL36A), its official name is ribosomal protein L36a-like (RPL36AL). As is typical for genes encoding ribosomal proteins, there are multiple processed pseudogenes of this gene dispersed through the genome. [provided by RefSeq, Jul 2008]

**Product images:**



Circular map for RC210682



Western blot validation of overexpression lysate (Cat# [LY424142]) using anti-DDK antibody (Cat# [TA50011-100]). Left: Cell lysates from untransfected HEK293T cells; Right: Cell lysates from HEK293T cells transfected with RC210682 using transfection reagent MegaTran 2.0 (Cat# [TT210002]).