

Restriction Sites: SgfI-MluI

Cloning Scheme:



ACCN: NM_005042

ORF Size: 498 bp

OTI Disclaimer: The molecular sequence of this clone aligns with the gene accession number as a point of reference only. However, individual transcript sequences of the same gene can differ through naturally occurring variations (e.g. polymorphisms), each with its own valid existence. This clone is substantially in agreement with the reference, but a complete review of all prevailing variants is recommended prior to use. [More info](#)

OTI Annotation: This clone was engineered to express the complete ORF with an expression tag. Expression varies depending on the nature of the gene.

Components: The ORF clone is ion-exchange column purified and shipped in a 2D barcoded Matrix tube containing 10ug of transfection-ready, dried plasmid DNA (reconstitute with 100 ul of water).

Reconstitution Method:

1. Centrifuge at 5,000xg for 5min.
2. Carefully open the tube and add 100ul of sterile water to dissolve the DNA.
3. Close the tube and incubate for 10 minutes at room temperature.
4. Briefly vortex the tube and then do a quick spin (less than 5000xg) to concentrate the liquid at the bottom.
5. Store the suspended plasmid at -20°C. The DNA is stable for at least one year from date of shipping when stored at -20°C.

RefSeq: [NM_005042.4](#), [NP_005033.1](#)

RefSeq Size: 4323 bp

RefSeq ORF: 501 bp

Locus ID: 5555

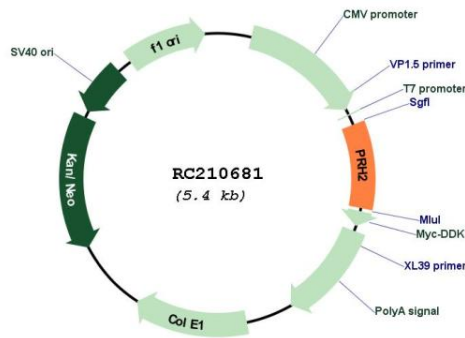
Cytogenetics: 12p13.2

Protein Families: Secreted Protein

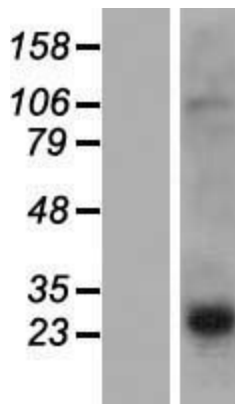
MW: 17 kDa

Gene Summary: This gene encodes a member of the heterogeneous family of proline-rich salivary glycoproteins. The encoded preproprotein undergoes proteolytic processing to generate one or more mature isoforms before secretion from the parotid and submandibular/sublingual glands. In western population this locus is commonly biallelic and encodes proline-rich protein (PRP) isoforms, PRP-1 and PRP-2. The reference genome encodes the PRP-1 allele. Certain alleles of this gene are associated with susceptibility to dental caries. This gene is located in a cluster of closely related salivary proline-rich proteins on chromosome 12. [provided by RefSeq, Oct 2015]

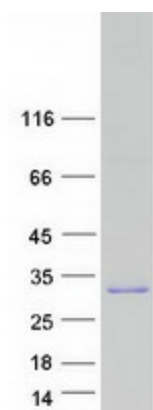
Product images:



Circular map for RC210681



Western blot validation of overexpression lysate (Cat# [LY426314]) using anti-DDK antibody (Cat# [TA50011-100]). Left: Cell lysates from untransfected HEK293T cells; Right: Cell lysates from HEK293T cells transfected with [RC225161] using transfection reagent MegaTran 2.0 (Cat# [TT210002]).



Coomassie blue staining of purified PRH2 protein (Cat# [TP310681]). The protein was produced from HEK293T cells transfected with PRH2 cDNA clone (Cat# RC210681) using MegaTran 2.0 (Cat# [TT210002]).