

## Product datasheet for RC210680

### E2F6 (NM\_198256) Human Tagged ORF Clone

#### Product data:

Product Type:	Expression Plasmids
Product Name:	E2F6 (NM_198256) Human Tagged ORF Clone
Tag:	Myc-DDK
Symbol:	E2F6
Synonyms:	E2F-6
Mammalian Cell Selection:	Neomycin
Vector:	pCMV6-Entry (PS100001)
E. coli Selection:	Kanamycin (25 ug/mL)
ORF Nucleotide Sequence:	>RC210680 representing NM_198256 Red=Cloning site Blue=ORF Green=Tags(s)

TTTTGTAATACGACTCACTATAGGGCGGCCGGAATTCGTCGACTGGATCCGGTACCGAGGAGATCTGCC  
GCC**CGATCGCC**

ATGAGTCAGCAGCGCCGGCGAGGAAGTTACCCAGTCTCCTCCTGGACCCGACGGAGGAGACGGTTCGCC  
GTCGGTGCCGAGACCCCATCAACGTGGAGGGCCTGCTGCCATCAAAAATAAGGATTAATTTAGAAGATAA  
TGTACAATATGTGTCCATGAGAAAAGCTCTAAAAGTGAAGAGACCTCGTTTTGATGTATCGCTGTTTTAT  
TTAACTCGAAAATTTATGGATCTTGTGAGATCTGCTCCCGGGGTATTCTTGACTTAAACAAGGTTGCAA  
CGAAACTGGGAGTCCGAAAGCGGAGAGTGTATGACATCACCAATGTCTTAGATGGAATCGACCTCGTTGA  
AAAGAAATCCAAGAACCATATTAGATGGATAGGATCTGATCTTAGCAATTTGGAGCAGTCCCAACAA  
AAGAAGCTACAGGAGGAACCTTTCTGACTTATCAGCAATGGAAGATGCTTTGGATGAGTTAATTAAGGATT  
GTGCTCAGCAGCTGTTTGAGTTAACAGATGACAAAGAAAATGAAAGACTAGCATATGTGACCTATCAAGA  
CATTATAGCATTAGGCTTCCATGAACAGATCGTCAATGCAAGTAAAGCTCCAGCAGAAAACCAGATTG  
GATGTTCCAGCTCCAGAGAAGACTCTATCACAGTGCACATAAGGAGCACCAACGGACCTATCGATGTCT  
ATTTGTGTGAAGTGGAGCAGGTCAGACCAGTAACAAAAGGTCTGAAGGTGTCGGGACCTCTTATCTGA  
GAGCACTCATCCAGAAGGCCCTGAGGAAGAAGAAAATCCTCAGCAAAGTGAAGAATTGCTTGAAGTAAGC  
AAC

**ACGCGT**ACGCGGCCGCTCGAGCAGAAACTCATCTCAGAAGAGGATCTGGCAGCAAATGATATCCTGGATT  
ACAAGGATGACGACGATAAGGTTTAA



[View online »](#)

**Protein Sequence:** >RC210680 representing NM\_198256  
Red=Cloning site Green=Tags(s)

MSQQRPAKRLPSLLLDPTTEETVRRRCRDPINVEGLLPSKIRINLEDNVQYVSMRKALKVKRPRFDVSLVY  
 LTRKFMDLVRSAPGGILDNLNKVATKLGVRKRVDITNVLDGIDLVEKSKNHIRWIGSDLSNFGAVPQQ  
 KKLQEELSDLAMEDALDELKDCAQQLFELTDDKENERLAYVTYQDIHSIQAFHEQIVIAVKAPAETRL  
 DVPAPREDSITVHIRSTNGPIDVYLCEVEQGQTSNKRSEGVGTSSSESTHPEGPEEEENPQQSEELLEVS  
 N

TRTRPLEQKLISEEDLAANDILDYKDDDDKV

**Chromatograms:** [https://cdn.origene.com/chromatograms/ja1511\\_a06.zip](https://cdn.origene.com/chromatograms/ja1511_a06.zip)

**Restriction Sites:** SgfI-MluI

**Cloning Scheme:**



**ACCN:** NM\_198256

**ORF Size:** 843 bp

**OTI Disclaimer:** The molecular sequence of this clone aligns with the gene accession number as a point of reference only. However, individual transcript sequences of the same gene can differ through naturally occurring variations (e.g. polymorphisms), each with its own valid existence. This clone is substantially in agreement with the reference, but a complete review of all prevailing variants is recommended prior to use. [More info](#)

**OTI Annotation:** This clone was engineered to express the complete ORF with an expression tag. Expression varies depending on the nature of the gene.

**Components:** The ORF clone is ion-exchange column purified and shipped in a 2D barcoded Matrix tube containing 10ug of transfection-ready, dried plasmid DNA (reconstitute with 100 ul of water).

**Reconstitution Method:**

1. Centrifuge at 5,000xg for 5min.
2. Carefully open the tube and add 100ul of sterile water to dissolve the DNA.
3. Close the tube and incubate for 10 minutes at room temperature.
4. Briefly vortex the tube and then do a quick spin (less than 5000xg) to concentrate the liquid at the bottom.
5. Store the suspended plasmid at -20°C. The DNA is stable for at least one year from date of shipping when stored at -20°C.

**RefSeq:** [NM\\_198256.4](#)

**RefSeq Size:** 3240 bp

**RefSeq ORF:** 846 bp

**Locus ID:** 1876

**UniProt ID:** [O75461](#)

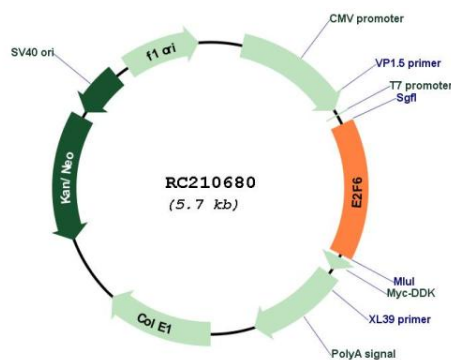
**Cytogenetics:** 2p25.1

**Protein Families:** Transcription Factors

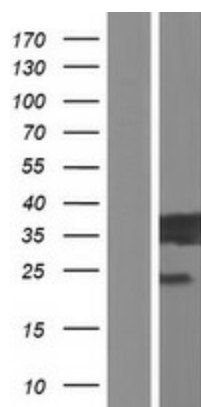
**MW:** 31.7 kDa

**Gene Summary:** This gene encodes a member of a family of transcription factors that play a crucial role in the control of the cell cycle. The protein encoded by this gene lacks the transactivation and tumor suppressor protein association domains found in other family members, and contains a modular suppression domain that functions in the inhibition of transcription. It interacts in a complex with chromatin modifying factors. There are pseudogenes for this gene on chromosomes 22 and X. Alternative splicing results in multiple transcript variants. [provided by RefSeq, May 2013]

### Product images:



Circular map for RC210680



Western blot validation of overexpression lysate (Cat# [LY404989]) using anti-DDK antibody (Cat# [TA50011-100]). Left: Cell lysates from untransfected HEK293T cells; Right: Cell lysates from HEK293T cells transfected with RC210680 using transfection reagent MegaTran 2.0 (Cat# [TT210002]).