

Product datasheet for **RC210677**

ENAH (NM_001008493) Human Tagged ORF Clone

Product data:

Product Type:	Expression Plasmids
Product Name:	ENAH (NM_001008493) Human Tagged ORF Clone
Tag:	Myc-DDK
Symbol:	ENAH
Synonyms:	ENA; MENA; NDPP1
Mammalian Cell Selection:	Neomycin
Vector:	pCMV6-Entry (PS100001)
E. coli Selection:	Kanamycin (25 ug/mL)



[View online »](#)

ORF Nucleotide Sequence:

>RC210677 representing NM_001008493
 Red=Cloning site Blue=ORF Green=Tags(s)

TTTTGTAATACGACTCACTATAGGGCGGCCGGGAATTCGTCGACTGGATCCGGTACCGAGGAGATCTGCC
 GCC**GCGATCGCC**

ATGAGTGAACAGAGTATCTGTCTCAGGCAAGAGCTGCTGTGATGGTTTATGATGATGCCAATAAGAAGTGGG
 TGCCAGCTGGTGGCTCAACTGGATTACAGAGAGTTCATATCTATACCATACAGGCAACAACACATTCAG
 AGTGGTGGGCAGGAAGATTACAGGACCATCAGGTCGTGATAAACTGTGCCATTCTAAAGGTTGAAGTAC
 AATCAAGCTACACAGACCTCCACCAGTGGCGAGATGCTAGACAGGTGTATGGTCTCAACTTTGGCAGCA
 AAGAGGATGCCAATGTCTTCGCAAGTGCCATGATGCATGCCTTAGAAGTGTAAATTCACAGGAAACAGG
 GCCAACATTGCCAGACAAAACACAACCTACCTGCTCAAGTTCAAAATGGCCCATCCAAGAAGAATTG
 GAAATTCAAAAGACAACACTACAAGAACAGCAACGGCAAAAGGAGCTGGAGCGGAAAGGCTGGAGCGAG
 AAAGAATGAAAAGAGAAAGGTTGGAGAGAGAGAGTTAGAAAGGAAAGGCTGGAGAGGGAGCGACTGGA
 ACAAGAACAGCTGGAGAGAGAGAGACAAGAACGGGAACGGCAGGAACGCCTGGAGCGGCAGGAACGCCTG
 GAGCGGCAGGAACGCCTGGAGCGGCAGGAACGCCTGGATCGGGAGAGGCAAGAAAGACAAGAACGAGAGA
 GGCTGGAGAGACTGGAACGGGAGAGGCAAGAAAGGGAGCGACAAGAGCAGTTAGAAAGAGAACAGCTGGA
 ATGGGAGAGAGAGCGCAGAATATCAAGTGTCTGCCCTGCCTCTGTTGAGACTCCTCTAAACTCTGTG
 CTGGGAGACTCTTCTGCTTCTGAGCCAGGCTTGCAGGCAGCCTCTCAGCCGGCCGAGACTCCATCCCAAC
 AGGGCATTGTCTTGGGACCACCTGCACCTCCACCTCCTCCACCCTCCACCAGGGCCTGCACAGGCTTC
 AGTAGCCCTCCCTCCTCCCCAGGGCCCCCTCCACCTCCTCCACTCCCATCCACCGGGCCTCCACCGCCC
 CCTCCTCCCCCTCCTCCTCAATCAAGTACCCCTCCTCCTCCACCCTCCTGCCACCCCTCCCTG
 CATCTGGATTCTTTTGGCATCCATGTCAAGACAATCGCCCTTAACTGGACTTGCAGCTGCAATTTGC
 CGGAGCAAAACTTAGAAAGTGTACGGATGGAGGATACCTCTTCCCAAGTGGAGGGAATGCTATTGGT
 GTGAACCTCCGCCTCATCTAAAACAGATACAGGCCGTGAAATGGACCCCTTCTTTAGGGGTAGTGGTT
 TAATGGAAGAAATGAGTGCCCTGCTGGCCAGGAGGAGAAGAAATGCTGAAAAGGGATCAACAATAGAAAAC
 AGAACAAAAGAGGACAAAGGTGAAGATTACAGCCTGTAACCTTAAGGCCTCTTCAACAAGTACACCT
 GAACCAATAAGAAAACCTTGGGAAAGACAATAACAATGAATGGCAGCAAGTACCTGTTATCTCCAGAC
 GGGATTCTCAAGGAAAATCAGATTGTTTTGACAACAGGTCTATGATTCATTACACAGACCAAAATC
 CACACCCTTATCACAGCCAGTCCCAATGGAGTCCAGACGGAAGGACTTGACTATGACAGGCTGAAGCAG
 GACATTTTAGATGAAATGAGAAAAGAAATAACAAAGCTAAAAGAAGAGCTATTGATGCAATCAGGCAGG
 AACTGAGCAAGTCAAATACTGCA

ACGCGTACGCGGCCGCTCGAGCAGAAACTCATCTCAGAAGAGGATCTGGCAGCAAATGATATCCTGGATT
 ACAAGGATGACGACGATAAGGTTTAA

Protein Sequence:

>RC210677 representing NM_001008493
 Red=Cloning site Green=Tags(s)

MSEQSIQARAAMVYDDANKKWVPAGGSTGFSRVHIYHHTGNNTFRVVGRKIQDQVVINCAIPKGLKY
 NQATQTFHQWRDARQVYGLNFGSKEDANVFASAMMHALEVLNSQETGPTLPRQNSQLPAQVQNGPSQEEL
 EIQRRLQEQQRQKELERERLERERERLERERLERERLERERLEQEQLERERQERERLERERLER
 ERQERLERQERLDRERQERERLER
 LGDSSASEPGLQAASQPAETPSQQGIVLGPLAPPPPPPLPPGPAQASVALPPPPPPPPPPPLPSTGPPPP
 PPPPLPNQVPPPPPPPPAPPLPASGFFLASMEDNRPLTGLAAAIAGAKLRKVSREMEDTSFPPSGGNAIG
 VNSASSKTDTRNGNPLPLGGSLMEEMALLARRRRIAEKGSTIETEQKEDKGEDSEPVTSKASSTSTP
 EPIRKPWERTNTMNGSKSPVISRRDPRKNQIVFDNRSYDSLHRPKSTPLSQPSANGVQTEGLDYDRLLKQ
 DILDENRKLTKLKEELIDAIRQELSKSNTA

TRTRPLEQKLISEEDLAANDILDYKDDDDKV

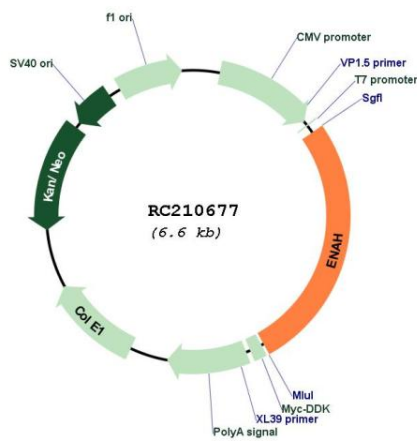
Chromatograms:

https://cdn.origene.com/chromatograms/mg3774_e01.zip

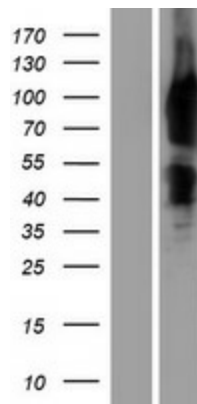
UniProt ID: [Q8N8S7](#)
Cytogenetics: 1q42.12
Protein Pathways: Regulation of actin cytoskeleton
MW: 66.3 kDa

Gene Summary: This gene encodes a member of the enabled/ vasodilator-stimulated phosphoprotein. Members of this gene family are involved in actin-based motility. This protein is involved in regulating the assembly of actin filaments and modulates cell adhesion and motility. Alternate splice variants of this gene have been correlated with tumor invasiveness in certain tissues and these variants may serve as prognostic markers. A pseudogene of this gene is found on chromosome 3. [provided by RefSeq, Sep 2016]

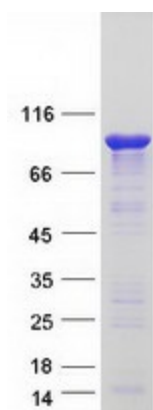
Product images:



Circular map for RC210677



Western blot validation of overexpression lysate (Cat# [LY423439]) using anti-DDK antibody (Cat# [TA50011-100]). Left: Cell lysates from untransfected HEK293T cells; Right: Cell lysates from HEK293T cells transfected with RC210677 using transfection reagent MegaTran 2.0 (Cat# [TT210002]).



Coomassie blue staining of purified ENAH protein (Cat# [TP310677]). The protein was produced from HEK293T cells transfected with ENAH cDNA clone (Cat# RC210677) using MegaTran 2.0 (Cat# [TT210002]).