

Product datasheet for **RC210673**

ZNF684 (NM_152373) Human Tagged ORF Clone

Product data:

Product Type:	Expression Plasmids
Product Name:	ZNF684 (NM_152373) Human Tagged ORF Clone
Tag:	Myc-DDK
Symbol:	ZNF684
Mammalian Cell Selection:	Neomycin
Vector:	pCMV6-Entry (PS100001)
E. coli Selection:	Kanamycin (25 ug/mL)
ORF Nucleotide Sequence:	>RC210673 ORF sequence Red=Cloning site Blue=ORF Green=Tags(s)

TTTTGTAATACGACTCACTATAGGGCGGCCGGAATTCGTCGACTGGATCCGGTACCGAGGAGATCTGCC
GCC**CGATCGCC**

ATGATCAGCTCCAGGAATCAGTGACATCCAGGATGTGGCTGTGGATTTCACTGCAGAGGAGTGGCAGC
TGCTTGATTGTGCTGAGAGAACCCTGTATTGGGATGTGATGTTGGAGAACTATAGAAACCTCATCTCAGT
GGGATGTCCAATTACAAAACAAAAGTGATCCTCAAGGTAGAGCAAGGACAAGAGCCATGGATGGTGGAG
GGAGCGAATCCACACGAGAGCTCTCCAGAATCTGACTACCCACTTGTGATGAACCAGGGAAGCATCGGG
AAAGCAAAGACAATTTTTGAAGTCAGTTTTGCTCACATTCAATAAAATCTGACTATGGAGAGAATCCA
CCATTATAATATGAGCACAAGTCTTAATCCAATGAGAAAAAATCATATAAATCGTTTGAGAAGTGTGTTG
CCACCTAATTTAGACTTACTTAAATATAATAGAAGTTATACTGTAGAAAACGCTTATGAATGCAGTGAAT
GCGGGAAAGCCTTCAAAAAGAAGTTTCATTTTATTAGACATGAAAAAATCATACAAGGAAAAACCTTT
TGAATGCAATGACTGTGGAAAAGCCTATAGCAGGAAGGCACACCTTGCAACTCATCAGAAAATTCATAAT
GGAGAGAGACCCTTTGTGTGCAATGATTGTGGGAAGGCGTTTATGCATAAAGCCCAACTCGTGGTCCACC
AGAGACTTCACACTGGAGAGAAGCCTTATGAGTGCAGTCAATGTGGGAAAACATTCACTTGGAACTCCTC
ATTTAATCAACACGTGAAATCTCATACACTTGAGAAGTCATTTGAATGTAAGGAATGTGGGAAAACCTTC
AGGTATAGTTCATCCCTTTATAAACATTCCAGATTTTCATACAGGAGAGAAACCCTACCAGTGTATCATAT
GTGGCAAAGCTTTTGGCAACACATCCGTGCTTGTACACACCAAAGAATTCATACAGGAGAGAAACCTTA
CAGTTGTATTGAATGTGGCAAAGCCTTCATCAAGAAGTCCCATCTCCTCAGACATCAGATAAECTCATACA
GGAGAGAAGCCCTATGAATGTAACAGATGTGGGAAAGCATTTCACAGAAGTCAAATCTTATTGTACATC
AGAAAATTCATACA

ACGCGTACGCGGCCGCTCGAGCAGAAACTCATCTCAGAAGAGGATCTGGCAGCAAATGATATCCTGGATT
ACAAGGATGACGACGATAAGGTTTAA



[View online »](#)

Protein Sequence: >RC210673 protein sequence
Red=Cloning site Green=Tags(s)

MISFQESVTFQDVAVDFTAEEWQLLDCAERTLYWDVMLENYRNLISVGCPIITKTKVILKVEQGQEPWMVE
 GANPHESSPESDYPLVDEPGKHRESKDNFLKSVLLTFNKILTMERIHNYMSTSLNPMRKKSYKSFEKCL
 PPNLDLLKYNRSYTVENAYECSECGKAFKKKFHFIRHEKNHTRKKPFECNDCGKAYSRKAHLATHQKIHN
 GERPFVCNDCGKAFMHKAQLVVHQRLHTGEKPYECSQCCKTFTWNSSFNQHVKSHTLEKSFECKEKGKTF
 RYSSSLYKHSRFHTGEKPYQCIICGKAFGNTSVLVTHQRIHTGEKPYSCIECGKAFIKKSHLLRHQIHTHT
 GEKPYECNRCGKAFSQKSNLIVHQIHT

TRTRPLEQKLISEEDLAANDILDYKDDDDKV

Chromatograms: https://cdn.origene.com/chromatograms/mk6367_e07.zip

Restriction Sites: SgfI-MluI

Cloning Scheme:

Cloning sites used for ORF Shuttling:



* The last codon before the Stop codon of the ORF

ACCN: NM_152373

ORF Size: 1134 bp

OTI Disclaimer: The molecular sequence of this clone aligns with the gene accession number as a point of reference only. However, individual transcript sequences of the same gene can differ through naturally occurring variations (e.g. polymorphisms), each with its own valid existence. This clone is substantially in agreement with the reference, but a complete review of all prevailing variants is recommended prior to use. [More info](#)

OTI Annotation: This clone was engineered to express the complete ORF with an expression tag. Expression varies depending on the nature of the gene.

Components: The ORF clone is ion-exchange column purified and shipped in a 2D barcoded Matrix tube containing 10ug of transfection-ready, dried plasmid DNA (reconstitute with 100 ul of water).

Reconstitution Method:

1. Centrifuge at 5,000xg for 5min.
2. Carefully open the tube and add 100ul of sterile water to dissolve the DNA.
3. Close the tube and incubate for 10 minutes at room temperature.
4. Briefly vortex the tube and then do a quick spin (less than 5000xg) to concentrate the liquid at the bottom.
5. Store the suspended plasmid at -20°C. The DNA is stable for at least one year from date of shipping when stored at -20°C.

RefSeq: [NM_152373.4](#)

RefSeq Size: 2108 bp

RefSeq ORF: 1137 bp

Locus ID: 127396

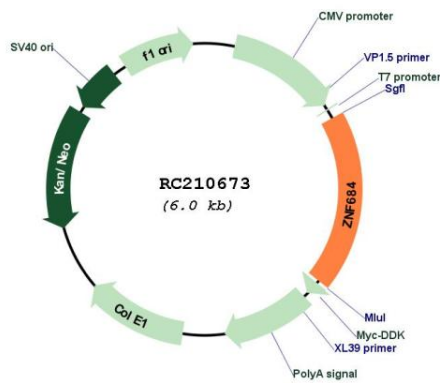
UniProt ID: [Q5T5D7](#)

Cytogenetics: 1p34.2

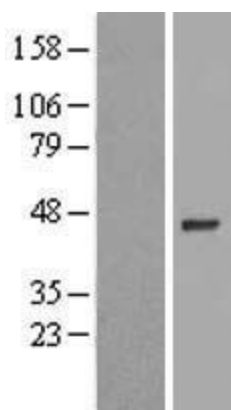
MW: 43.9 kDa

Gene Summary: May be involved in transcriptional regulation.[UniProtKB/Swiss-Prot Function]

Product images:



Circular map for RC210673



Western blot validation of overexpression lysate (Cat# [LY407620]) using anti-DDK antibody (Cat# [TA50011-100]). Left: Cell lysates from untransfected HEK293T cells; Right: Cell lysates from HEK293T cells transfected with RC210673 using transfection reagent MegaTran 2.0 (Cat# [TT210002]).