

Product datasheet for **RC210659**

Thyroid Peroxidase (TPO) (NM_000547) Human Tagged ORF Clone

Product data:

Product Type:	Expression Plasmids
Product Name:	Thyroid Peroxidase (TPO) (NM_000547) Human Tagged ORF Clone
Tag:	Myc-DDK
Symbol:	Thyroid Peroxidase
Synonyms:	MSA; TDH2A; TPX
Mammalian Cell Selection:	Neomycin
Vector:	pCMV6-Entry (PS100001)
E. coli Selection:	Kanamycin (25 ug/mL)



[View online »](#)

ORF Nucleotide Sequence:

>RC210659 ORF sequence
 Red=Cloning site Blue=ORF Green=Tags(s)

TTTTGTAATACGACTCACTATAGGGCGGCCGGGAATTCGTCGACTGGATCCGGTACCGAGGAGATCTGCC
 GCC**GCGATCGCC**

ATGAGAGCGCTGGCTGTGCTGTCTGTACGCTGGTTATGGCCTGCACAGAAGCCTTCTCCCTTCACT
 CGAGAGGGAAAGAACTCCTTTGGGGAAAGCCTGAGGAGTCTCGTGTCTCTAGCGTCTGGAGGAAAGCAA
 GCGCCTGGTGACACCGCCATGTACGCCACGATGCAGAGAAACCTCAAGAAAAGAGGAATCCTTTCTGCA
 GCTCAGCTTCTGTCTTTTCCAACTTCTGAGCCAACAAGCGGAGTGATTGCCCGAGCAGCAGAGATAA
 TGGAAACATCAATAACAAGCGATGAAAAGAAAAGTCAACCTGAAAACCAACAATCACAGCATCCAACGGA
 TGCTTTATCAGAAGATCTGCTGAGCATCATTGCAAAACATGTCTGGATGTCTCCCTTACATGCTGCCCCCA
 AAATGCCCAAACACTTGCCTGGCGAACAATAACAGGCCATCACAGGAGCTTGAACAACAGAGACCACC
 CCAGATGGGGCGCCTCCAACACGGCCCTGGCACGATGGCTCCCTCCAGTCTATGAGGACGGCTTCAGTCA
 GCCCGAGGCTGGAACCCGGCTTCTTGTACAACGGGTTCCACTGCCCCGGTCCGGGAGGTGACAAGA
 CATGTCTATTCAAGTTTCAAATGAGGTTGTACAGATGATGACCGTATTCTGACCTCTGATGGCATGGG
 GACAATACATCGACCACGACATCGCGTTACACCACAGAGCACCAGCAAAGCTGCCTTCGGGGGAGGGGC
 TGACTGCCAGATGACTTGTGAGAACAAAACCCATGTTTTCCCATACAACCTCCCGGAGGAGGCCCGGCCG
 GCCGCGGGCACCCTGTCTGCCCTTCTACCGCTCTTCGGCCGCTGCGGCACCGGGGACCAAGGCGCGC
 TCTTTGGGAACCTGTCCACGGCAACCCGCGCAGCAGATGAACGGGTTGACCTCGTTCTTGACGCGTC
 CACCGTGTATGGCAGCTCCCGGCCCTAGAGAGGCAGCTGCGAACTGGACCAGTGCCGAAGGGCTGCTC
 CGCGTCCACGCGCGCCTCCGGACTCCGGCCGCGCCTACCTGCCCTTCGTGCCCCACGCGCGCTCGCG
 CCTGTGCGCCCGAGCCCGCATCCCGGAGAGACCCCGGGCCCTGCTTCTGCGCGGAGAGCAGCCGCGC
 CAGCGAGGTCCCCTCCCTGACGGCACTGCACACGCTGTGGCTGCGCGAGCACAACCGCTGGCCGCGCG
 CTAAGGCCCTCAATGCGCACTGGAGCGCGGACGCGTGTACCAGGAGGCGCAAGGTCGTGGGCGCTC
 TGCACCAGATCATCACCTGAGGGATTACATCCCAGGATCCTGGGACCCGAGGCCTTCCAGCAGTACGT
 GGGTCCCTATGAAGGCTATGACTCCACCGCCAACCCCACTGTGTCCAACGTGTTCTCCACAGCCGCTTC
 CGCTTCGGCCATGCCACGATCCACCCGCTGGTGGAGGAGTGGACGCCAGCTTCCAGGAGACCCCGACC
 TGCCCGGGCTGTGGCTGCACCAGGCTTCTTTCAGCCCATGGACATTACTCCGTGGAGGTGGTTTGGACCC
 ACTAATACGAGGCTTCTTGAAGACCAGCCAACTGCAGGTGCAGGATCAGCTGATGAACGAGGAGCTG
 ACGGAAAGGCTCTTTGTGCTGTCCAATCCAGCACCTTGGATCTGGCGTCCATCAACCTGCAGAGGGGCC
 GGGACCACGGGCTGCCAGGTTACAATGAGTGGAGGGAGTTCTGCGGCCTGCCTCGCTGGAGACCCCGC
 TGACCTGAGCACAGCCATCGCCAGCAGGAGCGTGGCCGACAAGATCCTGGACTTGTACAAGCATCCTGAC
 AACATCGATGTCTGGCTGGGAGGCTTAGCTGAAAACCTCCTCCCAAGGGCTCGGACAGGGCCCTGTTTG
 CCTGTCTCATTGGGAAGCAGATGAAGGCTCTGCGGGACGGTACTGGTTTTGGTGGGAGAACAGCCACGT
 CTTACGGATGCACAGAGGCGTGAGCTGGAGAAGCACTCCCTGTCTCGGGTCACTGTGACAACACTGGC
 CTCACCAGGTTGCCATGGATGCCTTCCAAGTCGGCAAATCCCCGAAGACTTTGAGTCTTGTGACAGCA
 TCACTGGCATGAACCTGGAGGCTGGAGGAAACCTTCTCAAGACGACAAGTGTGGCTTCCCAGAGAG
 CGTGGAGAATGGGACTTTGTGCACTGTGAGGAGTCTGGGAGGCGCGTGGTGTATTCTGCCGGCAC
 GGGTATGAGCTCCAAGGCCGGGAGCAGCTCACTTGCAACCCAGGAAGGATGGGATTTCCAGCTCCCCTCT
 GCAAAGATGTGAACGAGTGTGCAGACGGTGCCACCCCCCTGCCACGCCTCTGCGAGGTGCAGAAACAC
 CAAAGGCGGCTTCCAGTGTCTCTGCGCGGACCCCTACGAGTTAGGAGACGATGGGAGAACCTGCGTAGAC
 TCCGGGAGGCTCCCTCGGGTACTTGGATCTCCATGTCGCTGGCTGCTCTGCTGATCGGAGGCTTCGAG
 GTCTCACCTCGACGGTATTTGCAGGTGGACACGCACTGGCACTAAATCCCACTGCCATCTCGGAGAC
 AGGCGGAGGAACTCCCGAGCTGAGATGCGGAAAGCACCAGGCCGTAGGGACCTCACCGAGCGGGCCGCA
 GCTCAGGACTCGGAGCAGGAGAGTGTGGGATGGAAGGCCGGGATACTCACAGGCTGCCGAGAGCCCTC

ACGCGGCCGCTCGAGCAGAACTCATCTCAGAAGAGGATCTGGCAGCAAATGATATCCTGGA
TTACAAGGATGACGACGATAAGGTTTAA

Protein Sequence: >RC210659 protein sequence
 Red=Cloning site Green=Tags(s)

```

MRALAVLSVTLVMACTEAFPPFISRGKELLWGKPEESRVSSVLEESKRLVDTAMYATMQRNLKRGILSA
AQLLSFSKLPPTSGVIARAAEIMETSIQAMKRKVNLTQQSQHPTDALSEDLLSIANMSGCLPYMLPP
KCPNTCLANKYRPITGACNNRDHPRWGASNTALARWLPVYEDGF SQPRGWNPGFLYNGFLLPPVREVTR
HVIQVSNVVTDDDRYSDLLMAWGQYIDHDIAF TPQSTSKAAFGGGADCQMTCEQNPCFP IQLPEEARP
AAGTACLPFYRSSAACGTGDQGFNLSTANPRQMNGLTSFLDASTVYGSSPALERQLRNWTS AEGLL
RVHARLRDGRAYLPFVPPRAPAACAPEPGIPGETRGPCLAGDGRASEVPSLTALHTLWLREHNRLAAA
LKALNAHWSADAVYQEARVVGALHQIITLRDYIPRILGPEAFQYVGPYEGYDSTANPTVSNVSTAAF
RFGHATIHPLVRRLDASFQEHDPDLPGLWLHQAFFSPWTLRGGGLDPLIRGLLARPAKLQVQDQLMNEEL
TERLFVLSNSSTLDLASINLQRGRDHGLPGYNEWREFCGLPRLETPADLSTAIASRSVADKILDLYKHPD
NIDVWLGGLAENFLPRARTGPLFACLIQKQMKALRDGDWFWWENSHVFTDAQRRELEKHSLSRVICDNTG
LTRVPMDAFQVGKFPEDFESCDSITGMNLEAWRETFPQDDKCGFPESVENGDVFHCEESGRRVLYVSCRH
GYELQGREQLTCTQEGWDFQPPLCKDVNECADGAHPPCHASARCNTKGGFQCLCADPYELGDDGRCTVD
SGRLPRVTWISMSLAALLIGGFAGLTSTVICRWTRTGKSTLPISETGGGPELRCGKHQAVGTSPQRAA
AQDSEQESAGMEGRDTHRLPRAL
  
```

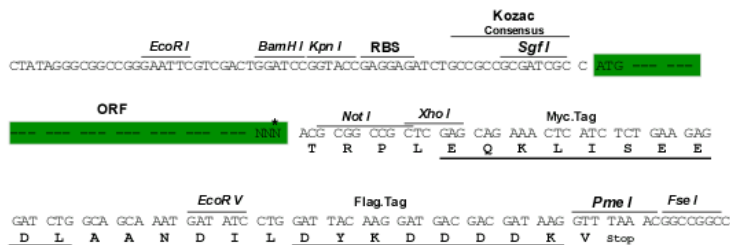
TRPLEQKLI SEEDLAANDILDYKDDDDKV

Chromatograms: https://cdn.origene.com/chromatograms/mk6798_d01.zip

Restriction Sites: SgfI-NotI

Cloning Scheme:

Cloning sites used for ORF Shuttling:



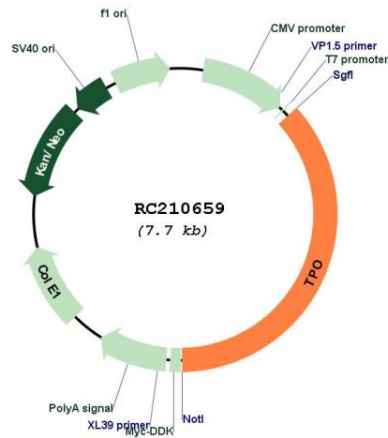
* The last codon before the Stop codon of the ORF

ACCN: NM_000547

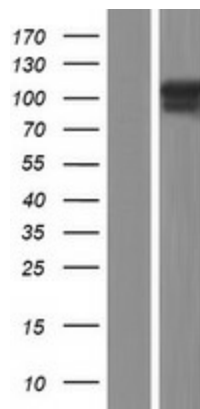
ORF Size: 2799 bp

OTI Disclaimer:	The molecular sequence of this clone aligns with the gene accession number as a point of reference only. However, individual transcript sequences of the same gene can differ through naturally occurring variations (e.g. polymorphisms), each with its own valid existence. This clone is substantially in agreement with the reference, but a complete review of all prevailing variants is recommended prior to use. More info
OTI Annotation:	This clone was engineered to express the complete ORF with an expression tag. Expression varies depending on the nature of the gene.
Components:	The ORF clone is ion-exchange column purified and shipped in a 2D barcoded Matrix tube containing 10ug of transfection-ready, dried plasmid DNA (reconstitute with 100 ul of water).
Reconstitution Method:	<ol style="list-style-type: none"> 1. Centrifuge at 5,000xg for 5min. 2. Carefully open the tube and add 100ul of sterile water to dissolve the DNA. 3. Close the tube and incubate for 10 minutes at room temperature. 4. Briefly vortex the tube and then do a quick spin (less than 5000xg) to concentrate the liquid at the bottom. 5. Store the suspended plasmid at -20°C. The DNA is stable for at least one year from date of shipping when stored at -20°C.
Note:	Plasmids are not sterile. For experiments where strict sterility is required, filtration with 0.22um filter is required.
RefSeq:	NM_000547.5
RefSeq Size:	3152 bp
RefSeq ORF:	2802 bp
Locus ID:	7173
UniProt ID:	P07202
Cytogenetics:	2p25.3
Protein Families:	Druggable Genome, ES Cell Differentiation/IPS, Transmembrane
Protein Pathways:	Autoimmune thyroid disease, Cytokine-cytokine receptor interaction, Hematopoietic cell lineage, Jak-STAT signaling pathway, Metabolic pathways, Tyrosine metabolism
MW:	102.9 kDa
Gene Summary:	This gene encodes a membrane-bound glycoprotein. The encoded protein acts as an enzyme and plays a central role in thyroid gland function. The protein functions in the iodination of tyrosine residues in thyroglobulin and phenoxy-ester formation between pairs of iodinated tyrosines to generate the thyroid hormones, thyroxine and triiodothyronine. Mutations in this gene are associated with several disorders of thyroid hormonogenesis, including congenital hypothyroidism, congenital goiter, and thyroid hormone organification defect IIA. Multiple transcript variants encoding distinct isoforms have been identified for this gene, but the full-length nature of some variants has not been determined. [provided by RefSeq, May 2011]

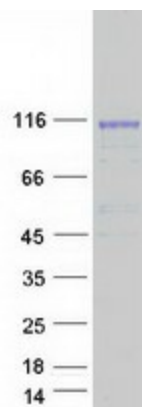
Product images:



Circular map for RC210659



Western blot validation of overexpression lysate (Cat# [LY424648]) using anti-DDK antibody (Cat# [TA50011-100]). Left: Cell lysates from untransfected HEK293T cells; Right: Cell lysates from HEK293T cells transfected with RC210659 using transfection reagent MegaTran 2.0 (Cat# [TT210002]).



Coomassie blue staining of purified TPO protein (Cat# [TP310659]). The protein was produced from HEK293T cells transfected with TPO cDNA clone (Cat# RC210659) using MegaTran 2.0 (Cat# [TT210002]).