

Product datasheet for **RC210657**

GFOD2 (NM_030819) Human Tagged ORF Clone

Product data:

| | |
|---------------------------|---|
| Product Type: | Expression Plasmids |
| Product Name: | GFOD2 (NM_030819) Human Tagged ORF Clone |
| Tag: | Myc-DDK |
| Symbol: | GFOD2 |
| Mammalian Cell Selection: | Neomycin |
| Vector: | pCMV6-Entry (PS100001) |
| E. coli Selection: | Kanamycin (25 ug/mL) |
| ORF Nucleotide Sequence: | >RC210657 ORF sequence Red=Cloning site Blue=ORF Green=Tags(s) |

TTTTGTAATACGACTCACTATAGGGCGGCCGGAATTCGTCGACTGGATCCGGTACCGAGGAGATCTGCC
GCC**CGATCGCC**

ATGAAGATGCTGCCAGGAGTGGGCGTGTGGGACTGGCAGCTCCGCCGAGTTCTGGTCCCAGTCTGCTGA
GGCAGAAGGGTTCACCTGTTGAGGCCCTGTGGGGGAAGACTGAGGAGGAGGCGAAGCAGCTTGCTGAGGA
GATGAACATCGCCTTCTACACGACCCGACTGATGACATCTTGTGCATCAAGATGTGGATCTGGTGTGC
ATCAGCATCCCCCTCCACTCACCCGGCAGATATCCGTGAAGGCTCTAGGTATTGGGAAGAATGTGGTTT
GCGAGAAGGCAGCAACATCGGTGGATGCCTTCCGGATGGTGACAGCCTCGCGCTACTACCCGACGCTCAT
GAGCCTGGTAGGGAACGTGCTGCGCTTCCCTGCCTGCCTTCGTGCGCATGAAACAGCTGATTCGGAACAC
TATGTGGGAGCGGTGATGATCTGTGATGCCCGCATCTACTCAGGCAGCCTGCTGAGCCCCAGCTATGGCT
GGATCTGTGATGAGCTCATGGGCGCGGGGCTTGCACACCATGGGGACCTACATTGTGGACCTGCTGAC
CCACCTGACCGGCCGAGAGCCGAGAAGGTGCACGGGCTGCTCAAGACATTCGTGAGGCAGAACGCTGCC
ATCCGTGGCATCCGGCACGTCACTAGCGATGACTTCTGTTTCTCCAGATGCTCATGGGTGGGGTGTGT
GTAGCACAGTGACTCAACTTCAACATGCCAGGCGCCTTGTGCATGAAGTCATGGTGGTAGGCTCTGC
AGGACGCCTCGTCGCCCGGGAGCCGACCTCTATGGGCAGAAGAACTCTGCCACGCAAGAGGAGCTGCTC
TTGAGGGACTCGCTGGCAGTGGGCGCAGGACTGCCTGAGCAGGGGCCCCAGGATGTCCCCTGCTGTACC
TGAAGGGCATGGTCTACATGGTGCAGGCCCTTGCGCCAGTCTTCCAGGGGCAGGGCGACCCGCCACCTG
GGACCGCACCCCTGTCTCCATGGCCGCTCCTTCGAGGATGGGCTGTACATGCAGAGCGTGGTGGATGCC
ATCAAGAGGTCGAGCCGATCCGGGGAGTGGGAGGCTGTGGAGGTGCTGACGGAGGAGCCCGACCAACCC
AGAACCTGTGTGAGGCACCTTCAGCGGAACAACCTA

ACGCGTACGCGGCCGCTCGAGCAGAACTCATCTCAGAAGAGGATCTGGCAGCAAATGATATCCTGGATT
ACAAGGATGACGACGATAAGGTTTAA



[View online »](#)

Protein Sequence: >RC210657 protein sequence
Red=Cloning site Green=Tags(s)

MKMLPGVGVFGTSSARVLVPLLRAGFTVEALWGKTEEEAKQLAEEMNIAFYTSRTDDILLHQDVLVC
 ISIPPLTRQISVKALGIGKNVCEKAATSVDAFRMVTASRYYPQLMSLVGNVLRFLPAFVRMKQLISEH
 YVGAVMICDARIYSGSLSPSYGWICDELMGGGLHTMGTYIVDLLTHLTGRRAEKVHGLLKTFFVRQNA
 IRGIRHVTSDDFCFQMLMGGGVCSTVTLNFMNMPGAFVHEVMVGSAGRLVARGADLYGQKNSATQEELL
 LRDSLAVGAGLPEQGPQDVPLLYLKGMVYMQALRQSFQGGDRRTWDRTPVSMMAASFEDGLYMQSVVDA
 IKRSSRSGEWEAVEVLTEEPDTNQNLCALQRNNL

TRTRPLEQKLISEEDLAANDILDYKDDDDKV

Chromatograms: https://cdn.origene.com/chromatograms/mk6070_f10.zip

Restriction Sites: SgfI-MluI

Cloning Scheme:

Cloning sites used for ORF Shuttling:



* The last codon before the Stop codon of the ORF

ACCN: NM_030819

ORF Size: 1155 bp

OTI Disclaimer: The molecular sequence of this clone aligns with the gene accession number as a point of reference only. However, individual transcript sequences of the same gene can differ through naturally occurring variations (e.g. polymorphisms), each with its own valid existence. This clone is substantially in agreement with the reference, but a complete review of all prevailing variants is recommended prior to use. [More info](#)

OTI Annotation: This clone was engineered to express the complete ORF with an expression tag. Expression varies depending on the nature of the gene.

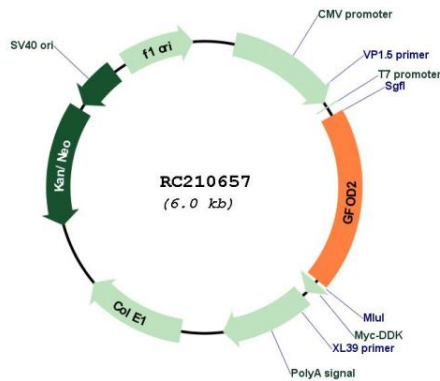
Components: The ORF clone is ion-exchange column purified and shipped in a 2D barcoded Matrix tube containing 10ug of transfection-ready, dried plasmid DNA (reconstitute with 100 ul of water).

Reconstitution Method:

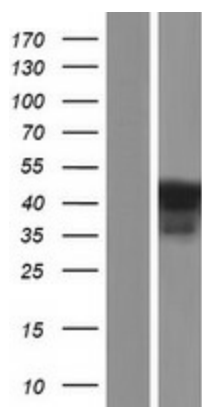
1. Centrifuge at 5,000xg for 5min.
2. Carefully open the tube and add 100ul of sterile water to dissolve the DNA.
3. Close the tube and incubate for 10 minutes at room temperature.
4. Briefly vortex the tube and then do a quick spin (less than 5000xg) to concentrate the liquid at the bottom.
5. Store the suspended plasmid at -20°C. The DNA is stable for at least one year from date of shipping when stored at -20°C.

RefSeq: [NM_030819.4](#)
RefSeq Size: 2099 bp
RefSeq ORF: 1158 bp
Locus ID: 81577
UniProt ID: [Q3B7J2](#)
Cytogenetics: 16q22.1
Domains: GFO_IDH_MocA, GFO_IDH_MocA_C
MW: 42.3 kDa
Gene Summary: Promotes matrix assembly.[UniProtKB/Swiss-Prot Function]

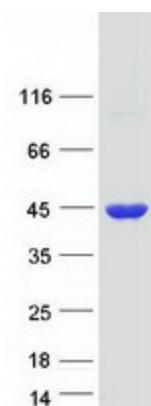
Product images:



Circular map for RC210657



Western blot validation of overexpression lysate (Cat# [LY403086]) using anti-DDK antibody (Cat# [TA50011-100]). Left: Cell lysates from untransfected HEK293T cells; Right: Cell lysates from HEK293T cells transfected with RC210657 using transfection reagent MegaTran 2.0 (Cat# [TT210002]).



Coomassie blue staining of purified GFOD2 protein (Cat# [TP310657]). The protein was produced from HEK293T cells transfected with GFOD2 cDNA clone (Cat# RC210657) using MegaTran 2.0 (Cat# [TT210002]).