

Product datasheet for **RC210655**

ROMO1 (NM_080748) Human Tagged ORF Clone

Product data:

Product Type: Expression Plasmids

Product Name: ROMO1 (NM_080748) Human Tagged ORF Clone

Tag: Myc-DDK

Symbol: ROMO1

Synonyms: bA353C18.2; C20orf52; MTGM; MTGMP

Mammalian Cell Selection: Neomycin

Vector: pCMV6-Entry (PS100001)

E. coli Selection: Kanamycin (25 ug/mL)

ORF Nucleotide Sequence: >RC210655 ORF sequence
Red=Cloning site Blue=ORF Green=Tags(s)

TTTTGTAATACGACTCACTATAGGGCGGCCGGAATTCGTCGACTGGATCCGGTACCGAGGAGATCTGCC
GCC**CGATCGCC**

ATGCCGGTGGCCGTGGTCCCTACGGACAGTCCCAGCCAAGCTGCTTCGACCGTGTCAAATGGGCTTCG
TGATGGGTTGCGCCGTGGGCATGGCGGCCGGGGCGCTCTTCGGCACCTTTTCTGTCTCAGGATCGGAAT
GCGGGTTCGAGAGCTGATGGCGGCATTGGGAAAACCATGATGCAGAGTGGCGGCACCTTGGCACATTC
ATGGCCATTGGGATGGGCATCCGATGC

ACGCGTACGCGGCCGCTCGAGCAGAACTCATCTCAGAAGAGGATCTGGCAGCAAATGATATCCTGGATT
ACAAGGATGACGACGATAAGGTTTAA

Protein Sequence: >RC210655 protein sequence
Red=Cloning site Green=Tags(s)

MPVAVGPGYQSQPSCFDRVKMGFVMGCAVGMAGALFGTFSLRIGMRGRELMMGIGKTMMSGGTFGTF
MAIGMGIRC

TRTRPLEQKLISEEDLAANDILDYKDDDDKV

Chromatograms: https://cdn.origene.com/chromatograms/mk6555_f11.zip

Restriction Sites: Sgfl-MluI



[View online »](#)

Cloning Scheme:


ACCN: NM_080748

ORF Size: 237 bp

OTI Disclaimer: The molecular sequence of this clone aligns with the gene accession number as a point of reference only. However, individual transcript sequences of the same gene can differ through naturally occurring variations (e.g. polymorphisms), each with its own valid existence. This clone is substantially in agreement with the reference, but a complete review of all prevailing variants is recommended prior to use. [More info](#)

OTI Annotation: This clone was engineered to express the complete ORF with an expression tag. Expression varies depending on the nature of the gene.

Components: The ORF clone is ion-exchange column purified and shipped in a 2D barcoded Matrix tube containing 10ug of transfection-ready, dried plasmid DNA (reconstitute with 100 ul of water).

Reconstitution Method:

1. Centrifuge at 5,000xg for 5min.
2. Carefully open the tube and add 100ul of sterile water to dissolve the DNA.
3. Close the tube and incubate for 10 minutes at room temperature.
4. Briefly vortex the tube and then do a quick spin (less than 5000xg) to concentrate the liquid at the bottom.
5. Store the suspended plasmid at -20°C. The DNA is stable for at least one year from date of shipping when stored at -20°C.

RefSeq: [NM_080748.3](#)

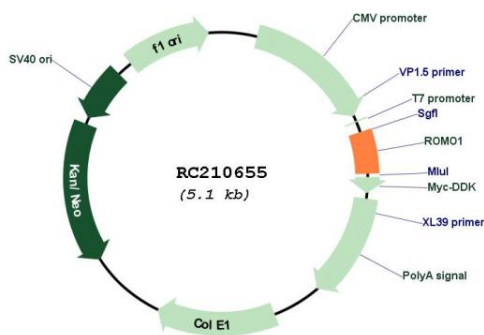
RefSeq Size: 477 bp

RefSeq ORF: 240 bp

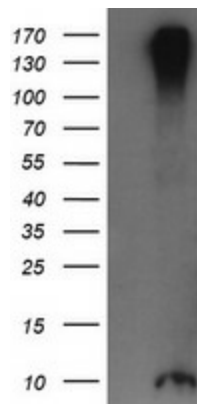
Locus ID: 140823

UniProt ID: [P60602](#)
Cytogenetics: 20q11.22
Protein Families: Transmembrane
MW: 8.2 kDa
Gene Summary: The protein encoded by this gene is a mitochondrial membrane protein that is responsible for increasing the level of reactive oxygen species (ROS) in cells. The protein also has antimicrobial activity against a variety of bacteria by inducing bacterial membrane breakage. [provided by RefSeq, Nov 2014]

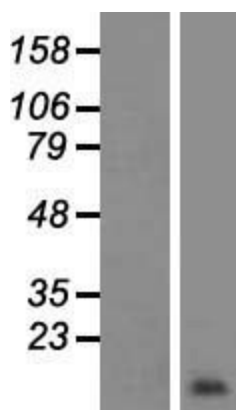
Product images:



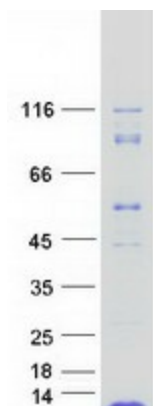
Circular map for RC210655



HEK293T cells were transfected with the pCMV6-ENTRY control (Cat# [PS100001], Left lane) or pCMV6-ENTRY ROMO1 (Cat# RC210655, Right lane) cDNA for 48 hrs and lysed. Equivalent amounts of cell lysates (5 ug per lane) were separated by SDS-PAGE and immunoblotted with anti-ROMO1 (Cat# [TA505580]). Positive lysates [LY409065] (100ug) and [LC409065] (20ug) can be purchased separately from OriGene.



Western blot validation of overexpression lysate (Cat# [LY409065]) using anti-DDK antibody (Cat# [TA50011-100]). Left: Cell lysates from untransfected HEK293T cells; Right: Cell lysates from HEK293T cells transfected with RC210655 using transfection reagent MegaTran 2.0 (Cat# [TT210002]).



Coomassie blue staining of purified ROMO1 protein (Cat# [TP310655]). The protein was produced from HEK293T cells transfected with ROMO1 cDNA clone (Cat# RC210655) using MegaTran 2.0 (Cat# [TT210002]).