

## Product datasheet for **RC210654**

### RPL27 (NM\_000988) Human Tagged ORF Clone

#### Product data:

**Product Type:** Expression Plasmids  
**Product Name:** RPL27 (NM\_000988) Human Tagged ORF Clone  
**Tag:** Myc-DDK  
**Symbol:** RPL27  
**Synonyms:** DBA16; L27  
**Mammalian Cell Selection:** Neomycin  
**Vector:** pCMV6-Entry (PS100001)  
**E. coli Selection:** Kanamycin (25 ug/mL)  
**ORF Nucleotide Sequence:** >RC210654 ORF sequence  
**Red=Cloning site Blue=ORF Green=Tags(s)**

TTTTGTAATACGACTCACTATAGGGCGGCCGGAATTCGTCGACTGGATCCGGTACCGAGGAGATCTGCC  
GCC**CGATCGCC**

ATGGGCAAGTTCATGAAACCTGGGAAGGTGGTCTTGTCTGGCTGGACGCTACTCCGGACGCAAAGCTG  
TCATCGTGAAGAACATTGATGATGGCACCTCAGATCGCCCTACAGCCATGCTCTGGTGGCTGGAATTGA  
CCGCTACCCCGCAAAGTGACAGCTGCCATGGCAAGAAGAAGATCGCCAAGAGATCAAAGATAAAATCT  
TTTGTAAAGTGTATAACTACAATCACCTAATGCCACAAGGACTCTGTGGATATCCCCTGGACAAA  
CTGTCGTAATAAGGATGTCTTCAGAGATCCTGCTCTTAAACGCAAGGCCCGACGGGAGCCAAGGTCAA  
GTTTGAAGAGAGATACAAGACAGCAAGAACAAGTGGTCTTCCAGAAACTGCGGTTT

**ACGCGT**ACGCGGCCGCTCGAGCAGAAACTCATCTCAGAAGAGGATCTGGCAGCAAATGATATCCTGGATT  
ACAAGGATGACGACGATAAGGTTTAA

**Protein Sequence:** >RC210654 protein sequence  
**Red=Cloning site Green=Tags(s)**  
MGKFMKPGKVVLVLAGRYSGRKAVIVKNIDDGTSRDPYSHALVAGIDRYPRKVTAAAGKKKIAKRSKIKS  
FVKVYNYNHLMPTRYSDIPLDKTVVNKDVFRDPALKRKRAREAKVKFEERYKTGKNKWFQKLR

**TR**TRPLEQKLISEEDLAANDILDYKDDDDKV

**Chromatograms:** [https://cdn.origene.com/chromatograms/mk6555\\_e11.zip](https://cdn.origene.com/chromatograms/mk6555_e11.zip)

**Restriction Sites:** Sgfl-Mlul



[View online »](#)

**Cloning Scheme:**


**ACCN:** NM\_000988

**ORF Size:** 408 bp

**OTI Disclaimer:** The molecular sequence of this clone aligns with the gene accession number as a point of reference only. However, individual transcript sequences of the same gene can differ through naturally occurring variations (e.g. polymorphisms), each with its own valid existence. This clone is substantially in agreement with the reference, but a complete review of all prevailing variants is recommended prior to use. [More info](#)

**OTI Annotation:** This clone was engineered to express the complete ORF with an expression tag. Expression varies depending on the nature of the gene.

**Components:** The ORF clone is ion-exchange column purified and shipped in a 2D barcoded Matrix tube containing 10ug of transfection-ready, dried plasmid DNA (reconstitute with 100 ul of water).

- Reconstitution Method:**
1. Centrifuge at 5,000xg for 5min.
  2. Carefully open the tube and add 100ul of sterile water to dissolve the DNA.
  3. Close the tube and incubate for 10 minutes at room temperature.
  4. Briefly vortex the tube and then do a quick spin (less than 5000xg) to concentrate the liquid at the bottom.
  5. Store the suspended plasmid at -20°C. The DNA is stable for at least one year from date of shipping when stored at -20°C.

**RefSeq:** [NM\\_000988.5](#)

**RefSeq Size:** 514 bp

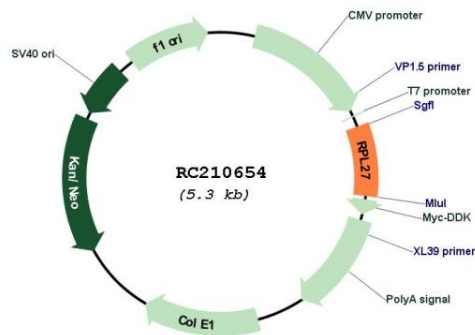
**RefSeq ORF:** 411 bp

**Locus ID:** 6155

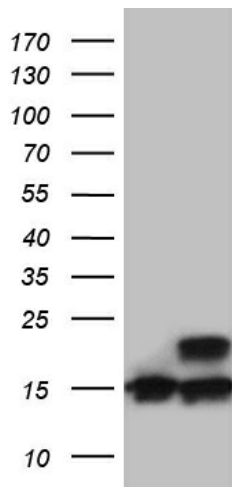
**UniProt ID:** [P61353](#)

<b>Cytogenetics:</b>	17q21.31
<b>Domains:</b>	Ribosomal_L27e, KOW, KOW
<b>Protein Families:</b>	Druggable Genome
<b>Protein Pathways:</b>	Ribosome
<b>MW:</b>	15.8 kDa
<b>Gene Summary:</b>	Ribosomes, the organelles that catalyze protein synthesis, consist of a small 40S subunit and a large 60S subunit. Together these subunits are composed of four RNA species and approximately 80 structurally distinct proteins. This gene encodes a member of the L27e family of ribosomal proteins and a component of the 60S subunit. A splice site mutation in this gene has been identified in a Diamond-Blackfan anemia (DBA) patient. As is typical for genes encoding ribosomal proteins, there are multiple processed pseudogenes of this gene dispersed through the genome. [provided by RefSeq, Mar 2017]

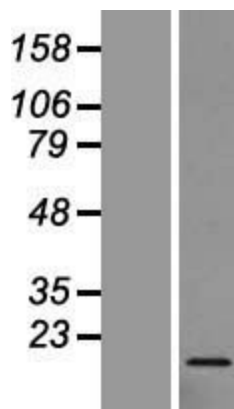
### Product images:



Circular map for RC210654



HEK293T cells were transfected with the pCMV6-ENTRY control (Cat# [PS100001], Left lane) or pCMV6-ENTRY RPL27 (Cat# RC210654, Right lane) cDNA for 48 hrs and lysed. Equivalent amounts of cell lysates (5 ug per lane) were separated by SDS-PAGE and immunoblotted with anti-RPL27 (Cat# [TA810903])(1:2000). Positive lysates [LY424410] (100ug) and [LC424410] (20ug) can be purchased separately from OriGene.



Western blot validation of overexpression lysate (Cat# [LY424410]) using anti-DDK antibody (Cat# [TA50011-100]). Left: Cell lysates from untransfected HEK293T cells; Right: Cell lysates from HEK293T cells transfected with RC210654 using transfection reagent MegaTran 2.0 (Cat# [TT210002]).