

Product datasheet for RC210646

CUTA (NM_001014837) Human Tagged ORF Clone

Product data:

Product Type: Expression Plasmids
Product Name: CUTA (NM_001014837) Human Tagged ORF Clone
Tag: Myc-DDK
Symbol: CUTA
Synonyms: ACHAP; C6orf82
Mammalian Cell Selection: Neomycin
Vector: pCMV6-Entry (PS100001)
E. coli Selection: Kanamycin (25 ug/mL)
ORF Nucleotide Sequence: >RC210646 ORF sequence
 Red=Cloning site Blue=ORF Green=Tags(s)

TTTTGTAATACGACTCACTATAGGGCGGCCGGAATTCGTCGACTGGATCCGGTACCGAGGAGATCTGCC
 GCC**CGATCGCC**

ATGCCGGCGTGTGCCTGTGGCCTCCCGCCTTTTGTGCTACCCGAGTCTTGCTGACCATGGCCTCTG
 GAAGCCCTCCGACCCAGCCCTCGCCGGCCTCGGATTCGGCTCTGGCTACGTTCCGGGCTCGGTCTCTGC
 AGCCTTTGTTACTTGCCCAACGAGAAGGTCGCCAAGGAGATCGCCAGGGCCGTGGTGGAGAAGCGCCTA
 GCAGCTCGTCAACCTCATCCCTCAGATTACATCCATCTATGAGTGGAAAGGGAAGATCGAGGAAGACA
 GTGAGGTGCTGATGATGATTAACCAAGTTTCCTTGGTCCCAGCTTTGACAGATTTTGTTCGTTCTGT
 GCACCCCTACGAAGTGGCCGAGGTAATTGCATTGCCTGTGGAACAGGGGAACCTTCCGACTCGAGTGG
 GTGCGCCAGGTACAGAGTCAGTTTCTGACTCTATCACAGTCCTGCCA

ACGCGTACGCGGCCGCTCGAGCAGAACTCATCTCAGAAGAGGATCTGGCAGCAAATGATATCCTGGATT
 ACAAGGATGACGACGATAAGGTTTAA

Protein Sequence: >RC210646 protein sequence
 Red=Cloning site Green=Tags(s)
 MPALLPVASRLLLLPRVLLTMASGSPPTQPSPASDSGSGYVPGSVSAFVTPNEKVAKEIARAVVEKRL
 AACVNLIPQITSIYEWGKIEEDSEVLMMIKTQSSLVPALTDVFVRSVHPYEVAEVIAPVEQGNFPYLQW
 VRQVTEVSVSDSITVLP

TRTRPLEQK**L**ISEEDLAANDILDYKDDDDKV

Chromatograms: https://cdn.origene.com/chromatograms/mk6555_h09.zip



[View online »](#)

Restriction Sites: SgfI-MluI

Cloning Scheme:



ACCN: NM_001014837

ORF Size: 468 bp

OTI Disclaimer: The molecular sequence of this clone aligns with the gene accession number as a point of reference only. However, individual transcript sequences of the same gene can differ through naturally occurring variations (e.g. polymorphisms), each with its own valid existence. This clone is substantially in agreement with the reference, but a complete review of all prevailing variants is recommended prior to use. [More info](#)

OTI Annotation: This clone was engineered to express the complete ORF with an expression tag. Expression varies depending on the nature of the gene.

Components: The ORF clone is ion-exchange column purified and shipped in a 2D barcoded Matrix tube containing 10ug of transfection-ready, dried plasmid DNA (reconstitute with 100 ul of water).

Reconstitution Method:

1. Centrifuge at 5,000xg for 5min.
2. Carefully open the tube and add 100ul of sterile water to dissolve the DNA.
3. Close the tube and incubate for 10 minutes at room temperature.
4. Briefly vortex the tube and then do a quick spin (less than 5000xg) to concentrate the liquid at the bottom.
5. Store the suspended plasmid at -20°C. The DNA is stable for at least one year from date of shipping when stored at -20°C.

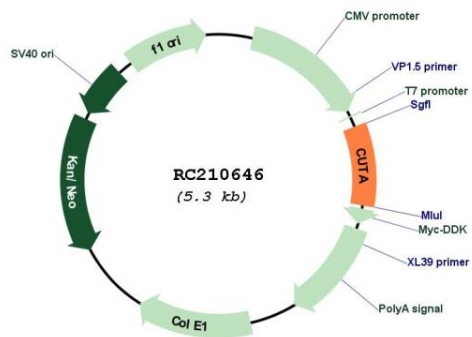
RefSeq: [NM_001014837.2](#)

RefSeq Size: 1072 bp

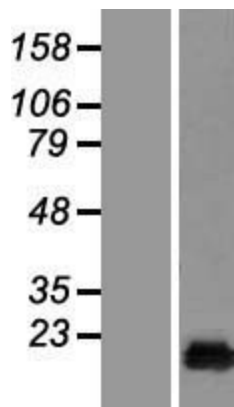
RefSeq ORF: 471 bp

Locus ID: 51596

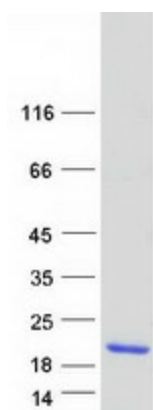
UniProt ID: [O60888](#)
Cytogenetics: 6p21.32
Protein Families: Transmembrane
MW: 16.8 kDa
Gene Summary: May form part of a complex of membrane proteins attached to acetylcholinesterase (AChE).
 [UniProtKB/Swiss-Prot Function]

Product images:


Circular map for RC210646



Western blot validation of overexpression lysate (Cat# [LY423090]) using anti-DDK antibody (Cat# [TA50011-100]). Left: Cell lysates from untransfected HEK293T cells; Right: Cell lysates from HEK293T cells transfected with RC210646 using transfection reagent MegaTran 2.0 (Cat# [TT210002]).



Coomassie blue staining of purified CUTA protein (Cat# [TP310646]). The protein was produced from HEK293T cells transfected with CUTA cDNA clone (Cat# RC210646) using MegaTran 2.0 (Cat# [TT210002]).