

## Product datasheet for RC210643

### GFUS (NM\_003313) Human Tagged ORF Clone

#### Product data:

Product Type:	Expression Plasmids
Product Name:	GFUS (NM_003313) Human Tagged ORF Clone
Tag:	Myc-DDK
Symbol:	GFUS
Synonyms:	FX; P35B; SDR4E1; TSTA3
Mammalian Cell Selection:	Neomycin
Vector:	pCMV6-Entry (PS100001)
E. coli Selection:	Kanamycin (25 ug/mL)
ORF Nucleotide Sequence:	>RC210643 ORF sequence Red=Cloning site Blue=ORF Green=Tags(s)

TTTTGTAATACGACTCACTATAGGGCGGCCGGAATTCGTCGACTGGATCCGGTACCGAGGAGATCTGCC  
GCC**CGATCGCC**

ATGGGTGAACCCAGGGATCCATGCGGATTCTAGTGACAGGGGGCTCTGGGCTGGTAGGCAAAGCCATCC  
AGAAGGTGGTAGCAGATGGAGCTGGACTTCCTGGAGAGGACTGGGTGTTGTCTCCTCTAAAGACGCCGA  
TCTCACGGATACAGCACAGACCCGCGCCTGTTTGAGAAGGTCCAACCCACACACGTCATCCATCTTGCT  
GCAATGGTGGGGGCCTGTTCCGGAATATCAAATAACAATTTGGACTTCTGGAGAAAAACGTGCACATGA  
ACGACAACGTCCTGCACTCGGCCTTTGAGGTGGGCGCCCGCAAGGTGGTGTCTGCCTGTCCACCTGTAT  
CTTCCCTGACAAGACGACCTACCCGATAGATGAGACCATGATCCACAATGGGCCTCCCAACAGCAAT  
TTTGGGTACTCGTATGCCAAGAGGATGATCGACGTGCAGAACAGGGCCTACTTCCAGCAGTACGGCTGCA  
CCTTACCCTGTGTCATCCCAACAGTCTTCCGGCCCAAGGACAACTTCAACATCGAGGATGGCCACGT  
GCTGCCTGGCCTCATCCACAAGGTGCACCTGGCCAAGAGCAGCGGCTCGGCCCTGACGGTGTGGGTACA  
GGGAATCCGCGGAGGCAGTTCATATACTCGCTGGACCTGGCCAGCTCTTTATCTGGTCTGCGGGAGT  
ACAATGAAGTGGAGCCATCATCTCTCCGTGGGCGAGGAAGTAGAGTCTCCATCAAGGAGGCAGCCGA  
GGCGGTGGTGGAGCCATGGACTTCCATGGGAAGTCACTTTGATACAACCAAGTCGGATGGGCAGTTT  
AAGAAGACAGCCAGTAACAGCAAGCTGAGGACCTACCTGCCGACTTCCGGTTCACACCCCTCAAGCAGG  
CGGTGAAGGAGACCTGTGCTTGGTTCACCTGACAACCTACGAGCAGGCCCGAAG

**ACGCGT**ACGCGGCCGCTCGAGCAGAACTCATCTCAGAAGAGGATCTGGCAGCAATGATATCCTGGATT  
ACAAGGATGACGACGATAAGGTTTAA



[View online »](#)



**Reconstitution Method:**

1. Centrifuge at 5,000xg for 5min.
2. Carefully open the tube and add 100ul of sterile water to dissolve the DNA.
3. Close the tube and incubate for 10 minutes at room temperature.
4. Briefly vortex the tube and then do a quick spin (less than 5000xg) to concentrate the liquid at the bottom.
5. Store the suspended plasmid at -20°C. The DNA is stable for at least one year from date of shipping when stored at -20°C.

**RefSeq:** [NM\\_003313.4](#)

**RefSeq Size:** 1363 bp

**RefSeq ORF:** 966 bp

**Locus ID:** 7264

**UniProt ID:** [Q13630](#)

**Cytogenetics:** 8q24.3

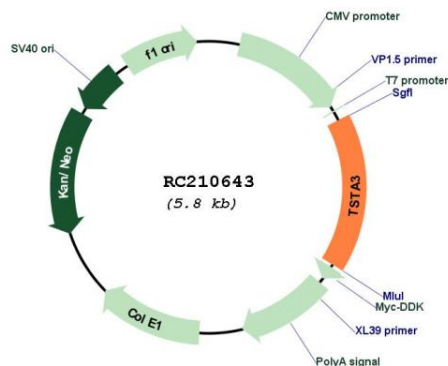
**Protein Families:** Druggable Genome

**Protein Pathways:** Amino sugar and nucleotide sugar metabolism, Fructose and mannose metabolism, Metabolic pathways

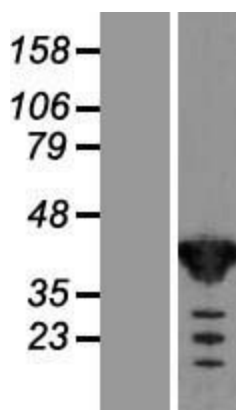
**MW:** 35.9 kDa

**Gene Summary:** Tissue specific transplantation antigen P35B is a NADP(H)-binding protein. It catalyze the two-step epimerase and the reductase reactions in GDP-D-mannose metabolism, converting GDP-4-keto-6-D-deoxymannose to GDP-L-fucose. GDP-L-fucose is the substrate of several fucosyltransferases involved in the expression of many glycoconjugates, including blood group ABH antigens and developmental adhesion antigens. Mutations in this gene may cause leukocyte adhesion deficiency, type II. [provided by RefSeq, Jul 2008]

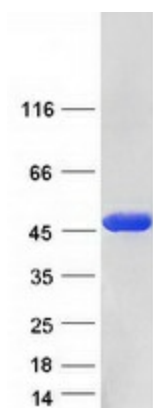
## Product images:



Circular map for RC210643



Western blot validation of overexpression lysate (Cat# [LY418775]) using anti-DDK antibody (Cat# [TA50011-100]). Left: Cell lysates from untransfected HEK293T cells; Right: Cell lysates from HEK293T cells transfected with RC210643 using transfection reagent MegaTran 2.0 (Cat# [TT210002]).



Coomassie blue staining of purified TSTA3 protein (Cat# [TP310643]). The protein was produced from HEK293T cells transfected with TSTA3 cDNA clone (Cat# RC210643) using MegaTran 2.0 (Cat# [TT210002]).