

Product datasheet for **RC210637**

ABHD2 (NM_152924) Human Tagged ORF Clone

Product data:

Product Type:	Expression Plasmids
Product Name:	ABHD2 (NM_152924) Human Tagged ORF Clone
Tag:	Myc-DDK
Symbol:	ABHD2
Synonyms:	HS1-2; LABH2; PHPS1-2
Mammalian Cell Selection:	Neomycin
Vector:	pCMV6-Entry (PS100001)
E. coli Selection:	Kanamycin (25 ug/mL)



[View online »](#)

ORF Nucleotide Sequence:

>RC210637 ORF sequence
 Red=Cloning site Blue=ORF Green=Tags(s)

TTTTGTAATACGACTCACTATAGGGCGGCCGGAATTCGTCGACTGGATCCGGTACCGAGGAGATCTGCC
 GCC**CGGATCGCC**

ATGAATGCCATGTCTGGAGACTCCCGAAGCTCCAGCCGTGTTTGGAGTGAAGCTGGCTGCAGTGGCTG
 CTGTGCTGTACGTGATCGTCCGGTGTGTTAACCTGAAGAGCCCCACAGCCCCACCTGACCTCTACTTCCA
 GGACTCGGGGCTCTCACGCTTCTGCTCAAGTCTGTCTCTTCTGACCAAAGAATACATTCCACCGTTG
 ATCTGGGGGAAAAGTGGACACATCCAGACAGCCTTGATGGGAAGATGGGAAGGGTGAAGTGCACATC
 CTTATGGGCACCGGAAGTTCATCACTATGTCTGATGGAGCCACTTCTACATTCGACCTCTTCGAGCCCTT
 GGCTGAGCACTGTGTTGGAGATGATATCACCATGGTCTCTGCCCTGGAATTGCCAATCACAGCGAGAAG
 CAATACATCCGCACTTTCGTTGACTACGCCAGAAAAATGGCTATCGGTGCGCCGTGCTGAACCACTGG
 GTGCCCTGCCAACATTGAATTGACCTCGCCACGCATGTTACCTATGGTGCACGTGGGAATTTGGAGC
 CATGGTGAAGTACATCAAGAAGACATATCCCTGACCCAGCTGGTCTGCTGGGCTTCAGCTGGGTGGT
 AACATTGTGTGCAAATACTTGGGGGAGACTCAGGCAAACCAAGAGAAGGTCTGTGCTGCGTCAGCGTGT
 GCCAGGGGTACAGTGCCTGAGGGCCCAGGAAACCTTCATGCAATGGGATCAGTCCGGCCGGTCTACAA
 CTTCCTCATGGCTGACAACATGAAGAAGATCATCTCTCGCACAGGCAAGCTCTTTTTGGAGACCATGTT
 AAGAAACCCAGAGCCTGGAAGACACGGACTTGAGCCGGCTCTACACAGCAACATCCCTGATGCAGATTG
 ATGACAATGTGATGAGGAAGTTTACGGCTATAACTCCCTGAAGGAATACTATGAGGAAGAAAGTTGCAT
 GCGGTACCTGCACAGGATTTATGTTCTCTCATGCTGGTAAATGCAGTGCAGTCCGTTGGTGCATGAA
 AGTCTTCAACCATTCAAAATCTTTTCAGAGAAACGAGAGAAGTGCATGTTTGTGCTGCCTCTGCATG
 GGGGCCACTTGGGCTTCTTTGAGGGCTCTGTGCTGTTCCCGAGCCCTGACATGGATGGATAAGCTGGT
 GGTGGAGTACGCCAACGCCATTTGCCAATGGGAGCGTAACAAGTGCAGTCTGACACGGAGCAGGTG
 GAGCCGACCTGGAG

ACGCGTACGCGGCCGCTCGAGCAGAACTCATCTCAGAAGAGGATCTGGCAGCAAATGATATCCTGGATT
 ACAAGGATGACGACGATAAGGTTTAA

Protein Sequence:

>RC210637 protein sequence
 Red=Cloning site Green=Tags(s)

MNAMLETPELPAVFDGVKLAAVAVALYIVRCLNLKSPTAPPDL YFQDGLSRFLKSCPLL TKEYIPPL
 IWGKSGHIQTAL YGKMGRVRSPPHYGHRKF ITMSDGATSTFDL FEPLAEHCVDGDDITMVICPGIANHSEK
 QYIRTFVDYAQKNGYRCAVLNHLGALPNIEL TSPRMFTYGCTWEFGAMVNYIKKTYPLTQLVVVGFSLGG
 NIVCKYLGETQANQEKVLCVSVQCQYSALRAQETFMQWDQCRRFYNFLMADNMKKIILSHRQALFGDHV
 KKPQSLEDTDL SRLYTATSLMQIDDNVMRKFHGYNSLKEYEYEEESCMRYLHRIYVPLMLVNAADDPLVHE
 SLLTIPKSLSEKRENVFVLP LPHGGHLGFFEGSVL FPEPLTWMDKL VVEYANAICQWERNKLQCSDETV
 EADLE

TRTRPLEQKLISEEDLAANDILDYKDDDDKV

Chromatograms:

https://cdn.origene.com/chromatograms/mk6367_d12.zip

Restriction Sites:

Sgfl-Mlul

Cloning Scheme:


ACCN: NM_152924

ORF Size: 1275 bp

OTI Disclaimer: The molecular sequence of this clone aligns with the gene accession number as a point of reference only. However, individual transcript sequences of the same gene can differ through naturally occurring variations (e.g. polymorphisms), each with its own valid existence. This clone is substantially in agreement with the reference, but a complete review of all prevailing variants is recommended prior to use. [More info](#)

OTI Annotation: This clone was engineered to express the complete ORF with an expression tag. Expression varies depending on the nature of the gene.

Components: The ORF clone is ion-exchange column purified and shipped in a 2D barcoded Matrix tube containing 10ug of transfection-ready, dried plasmid DNA (reconstitute with 100 ul of water).

- Reconstitution Method:**
1. Centrifuge at 5,000xg for 5min.
 2. Carefully open the tube and add 100ul of sterile water to dissolve the DNA.
 3. Close the tube and incubate for 10 minutes at room temperature.
 4. Briefly vortex the tube and then do a quick spin (less than 5000xg) to concentrate the liquid at the bottom.
 5. Store the suspended plasmid at -20°C. The DNA is stable for at least one year from date of shipping when stored at -20°C.

RefSeq: [NM_152924.5](#)

RefSeq Size: 8761 bp

RefSeq ORF: 1278 bp

Locus ID: 11057

UniProt ID: [P08910](#)

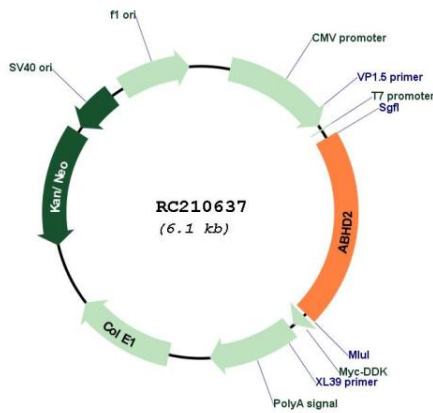
Cytogenetics: 15q26.1

Domains: abhydrolase

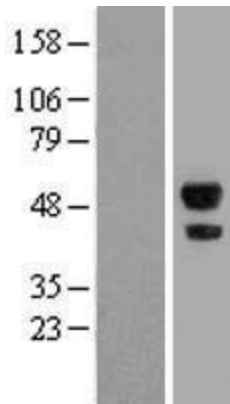
MW: 48.3 kDa

Gene Summary: This gene encodes a protein containing an alpha/beta hydrolase fold, which is a catalytic domain found in a wide range of enzymes. The encoded protein is an acylglycerol lipase that catalyzes the hydrolysis of endocannabinoid arachidonoylglycerol from the cell membrane. This leads to activation of the sperm calcium channel CatSper, which results in sperm activation. Alternative splicing of this gene results in two transcript variants encoding the same protein. [provided by RefSeq, Jan 2017]

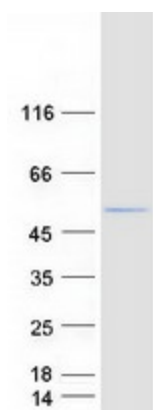
Product images:



Circular map for RC210637



Western blot validation of overexpression lysate (Cat# [LY407219]) using anti-DDK antibody (Cat# [TA50011-100]). Left: Cell lysates from untransfected HEK293T cells; Right: Cell lysates from HEK293T cells transfected with RC210637 using transfection reagent MegaTran 2.0 (Cat# [TT210002]).



Coomassie blue staining of purified ABHD2 protein (Cat# [TP310637]). The protein was produced from HEK293T cells transfected with ABHD2 cDNA clone (Cat# RC210637) using MegaTran 2.0 (Cat# [TT210002]).