

## Product datasheet for **RC210631L4V**

### HLAB (HLA-B) (NM\_005514) Human Tagged ORF Clone Lentiviral Particle

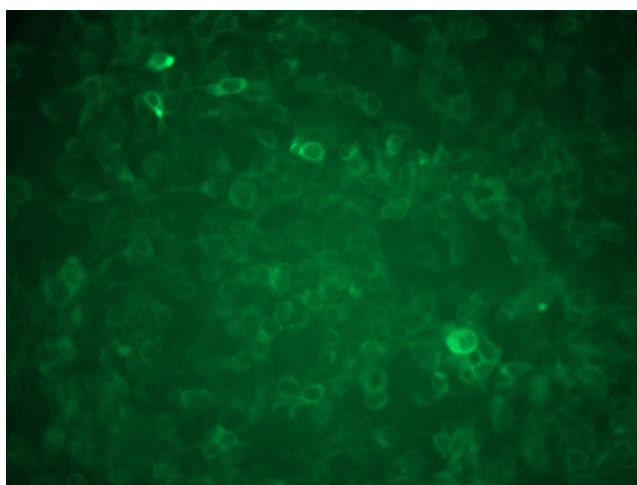
#### Product data:

Product Type:	Lentiviral Particles
Product Name:	HLAB (HLA-B) (NM_005514) Human Tagged ORF Clone Lentiviral Particle
Symbol:	HLAB
Synonyms:	AS; B-4901; HLAB
Mammalian Cell Selection:	Puromycin
Vector:	pLenti-C-mGFP-P2A-Puro (PS100093)
Tag:	mGFP
ACCN:	NM_005514
ORF Size:	1086 bp
ORF Nucleotide Sequence:	The ORF insert of this clone is exactly the same as(RC210631).
OTI Disclaimer:	The molecular sequence of this clone aligns with the gene accession number as a point of reference only. However, individual transcript sequences of the same gene can differ through naturally occurring variations (e.g. polymorphisms), each with its own valid existence. This clone is substantially in agreement with the reference, but a complete review of all prevailing variants is recommended prior to use. <a href="#">More info</a>
OTI Annotation:	This clone was engineered to express the complete ORF with an expression tag. Expression varies depending on the nature of the gene.
RefSeq:	<a href="#">NM_005514.5</a>
RefSeq Size:	1578 bp
RefSeq ORF:	1089 bp
Locus ID:	3106
UniProt ID:	<a href="#">P01889</a>
Cytogenetics:	6p21.33
Domains:	MHC_I, ig, IGc1
Protein Families:	Transmembrane



[View online »](#)

<b>Protein Pathways:</b>	Allograft rejection, Antigen processing and presentation, Autoimmune thyroid disease, Cell adhesion molecules (CAMs), Endocytosis, Graft-versus-host disease, Natural killer cell mediated cytotoxicity, Type I diabetes mellitus, Viral myocarditis
<b>MW:</b>	40.3 kDa
<b>Gene Summary:</b>	HLA-B belongs to the HLA class I heavy chain paralogues. This class I molecule is a heterodimer consisting of a heavy chain and a light chain (beta-2 microglobulin). The heavy chain is anchored in the membrane. Class I molecules play a central role in the immune system by presenting peptides derived from the endoplasmic reticulum lumen. They are expressed in nearly all cells. The heavy chain is approximately 45 kDa and its gene contains 8 exons. Exon 1 encodes the leader peptide, exon 2 and 3 encode the alpha1 and alpha2 domains, which both bind the peptide, exon 4 encodes the alpha3 domain, exon 5 encodes the transmembrane region and exons 6 and 7 encode the cytoplasmic tail. Polymorphisms within exon 2 and exon 3 are responsible for the peptide binding specificity of each class one molecule. Typing for these polymorphisms is routinely done for bone marrow and kidney transplantation. Hundreds of HLA-B alleles have been described. [provided by RefSeq, Jul 2008]

**Product images:**

[RC210631L4] was used to prepare Lentiviral particles using [TR30037] packaging kit. HEK293T cells were transduced with RC210631L4V particle to overexpress human HLA-B-mGFP fusion protein.