

## Product datasheet for **RC210624**

### GLUT9 (SLC2A9) (NM\_020041) Human Tagged ORF Clone

#### Product data:

Product Type:	Expression Plasmids
Product Name:	GLUT9 (SLC2A9) (NM_020041) Human Tagged ORF Clone
Tag:	Myc-DDK
Symbol:	GLUT9
Synonyms:	GLUT9; GLUTX; UAQTL2; URATv1
Mammalian Cell Selection:	Neomycin
Vector:	pCMV6-Entry (PS100001)
E. coli Selection:	Kanamycin (25 ug/mL)



[View online »](#)

**ORF Nucleotide Sequence:**

>RC210624 representing NM\_020041  
 Red=Cloning site Blue=ORF Green=Tags(s)

TTTTGTAATACGACTCACTATAGGGCGGCCGGAATTCGTCGACTGGATCCGGTACCGAGGAGATCTGCC  
 GCC**GCGATCGCC**

ATGGCAAGGAAACAAAATAGGAATTC AAGGAAGTGGCCTAGTCCCTCACAGATGACACCAGCCAGC  
 CCAGGCCCTCCAGGGCCAGGGAGGCACTGCTGGAGTGTGACCACCTGAGGAGTGGGGTGCCAGGTGGAAG  
 GAGAAGAAAGGACTGGTCTGCTCGCTCCTCGTGGCCTCCCTCGCGGGCGCCTTCGGCTCCTCCTCCTC  
 TACGGCTACAACCTGTCGGTGGTGAATGCCCCACCCGTACATCAAGGCCTTTTACAATGAGTCATGGG  
 AAAGAAGGCATGGACGTCCAATAGACCCAGACACTCTGACTCTGCTCTGGTCTGTGACTGTGTCCATATT  
 CGCCATCGGTGGACTTGTGGGACATTAATTGTGAAGATGATTGGAAAGGTTCTTGGGAGGAAGCACACT  
 TTGCTGGCCAATAATGGGTTTGAATTTCTGCTGCATTGCTGATGGCCTGCTCGCTCCAGGCAGGAGCCT  
 TTGAAATGCTCATCGTGGGACGCTTCATCATGGGCATAGATGGAGGCGTCCGCCCTCAGTGTGCTCCCAT  
 GTACCTCAGTGAGATCTACCCAAGGAGATCCGTGGCTCTCTGGGCGAGTGACTGCCATCTTTATCTGC  
 ATTTGGCGTGTACTGGGAGCTTCTGGGCTGCCGAGCTGCTGGGAAAGGAGAGTACCTGGCCATAACC  
 TGTTTGGAGTGATTGTGGTCCCTGCCGTTGTCCAGCTGCTGAGCCTTCCCTTTCTCCCGGACAGCCACG  
 CTACCTGCTCTTGGAGAAGCACAAACGAGGCAAGAGCTGTGAAAGCCTTCCAAACGTTCTTGGGTAAGCA  
 GACGTTTCCCAAGAGGTAGAGGAGGTCCTGGCTGAGAGCCGCTGCAGAGGAGCATCCGCTGGTGTCCG  
 TGCTGGAGCTGCTGAGAGCTCCCTACGTCGCTGGCAGGTGGTCAACGCTGATTGTACCATTGGCCTGCTA  
 CCAGCTCTGTGGCCTCAATGCAATTTGGTTCTATACCAACAGCATCTTTGGAAAAGCTGGGATCCCTCTG  
 GCAAAGATCCCATACGTCACCTTGAGTACAGGGGGCATCGAGACTTTGGTGGCCTCTTCTGGTTGG  
 TCATTGAGCACCTGGGACGGAGACCCCTCCTCATTGGTGGCTTTGGGCTCATGGGCTCTCTTTGGGAC  
 CCTCACCATCACGCTGACCCTGCAGGACCACGCCCTGGTCCCTACCTGAGTATCGTGGGCATTCTG  
 GCCATCATCGCCTCTTTCTGCAGTGGGCCAGGTGGCATCCGTTTCATCTTACTGTTGAGTTCTTCCAGC  
 AATCTCAGCGGCCGGCTGCCTTCATCATTGCAGGCACCGTCAACTGGCTCTCCAACCTTGTGTTGGGCT  
 CCTCTTCCATTCTCAGAAAAGTCTGGACACCTACTGTTTCTAGTCTTTGCTACAATTTGTATCACA  
 GGTGCTATCTACCTGATTTTGTGCTGCCTGAGACCAAAAACAGAACCTATGCAGAAATCAGCCAGGCAT  
 TTTCCAAAAGGAACAAAGCATACCCACCAGAAGAGAAAATCGACTCAGCTGCTACTGATGGTAAGATAAA  
 TGAAGGCCT

**ACGCGT**ACGCGGCCGCTCGAGCAGAAACTCATCTCAGAAGAGGATCTGGCAGCAAATGATATCCTGGATT  
 ACAAGGATGACGACGATAAGGTTTAA

**Protein Sequence:**

>RC210624 representing NM\_020041  
 Red=Cloning site Green=Tags(s)

MARKQNRNSKELGLVPLTDDTSHARPPGPRALLECDHLRSGVPGRRRDKWCSLLVASLAGAFSSFL  
 YGYNLSVFNAPTPIKAFYNESWERRHGRPIDPDTLLWSVTVSIFAIGGLVGLIVKMIKVLGRKHT  
 LLANNGFAISAALLMACSLQAGAFEMLI VGRFIMGIDGGVALSVLPMYLSEISPKAIRSLGQVTAIFIC  
 IGVFTGQLLGLPELLGKESTWPYLFVIVVPAVVQLLSLPFLPDSPRYLLLEKHNEARAVKAFQTFLGKA  
 DVSQEVVEVLAESRVQRSIRLVSVLELLRAPYVRWQVVTIVITMACYQLCGLNAIWFYTNISIFGKAGIPL  
 AKIPYVTLSTGGIETLAAVFSGLVIEHLGRRPLLIGGFGLMGLFFGTLITLTLQDHAPWVYPYLSIVGIL  
 AIIASFCSGPGGIPFILTGEFFQQSQRPAAFIIAGTVNWL SNFAVGLLFPFIQKSLDTYCFLVFATICIT  
 GAIYLYFVLPETKNRTYAEISQAFSKRNKAYPPEEKIDS AVTDGKINGRP

**TR**TRPLEQKLI SEEDLAANDILDYKDDDDKV

**Chromatograms:**

[https://cdn.origene.com/chromatograms/mg2611\\_b09.zip](https://cdn.origene.com/chromatograms/mg2611_b09.zip)

**Restriction Sites:**

Sgfl-Mlul

**Cloning Scheme:**

**ACCN:** NM\_020041

**ORF Size:** 1620 bp

**OTI Disclaimer:** Due to the inherent nature of this plasmid, standard methods to replicate additional amounts of DNA in E. coli are highly likely to result in mutations and/or rearrangements. Therefore, OriGene does not guarantee the capability to replicate this plasmid DNA. Additional amounts of DNA can be purchased from OriGene with batch-specific, full-sequence verification at a reduced cost. Please contact our customer care team at [custsupport@origene.com](mailto:custsupport@origene.com) or by calling 301.340.3188 option 3 for pricing and delivery.

The molecular sequence of this clone aligns with the gene accession number as a point of reference only. However, individual transcript sequences of the same gene can differ through naturally occurring variations (e.g. polymorphisms), each with its own valid existence. This clone is substantially in agreement with the reference, but a complete review of all prevailing variants is recommended prior to use. [More info](#)

**OTI Annotation:** This clone was engineered to express the complete ORF with an expression tag. Expression varies depending on the nature of the gene.

**Components:** The ORF clone is ion-exchange column purified and shipped in a 2D barcoded Matrix tube containing 10ug of transfection-ready, dried plasmid DNA (reconstitute with 100 ul of water).

**Reconstitution Method:**

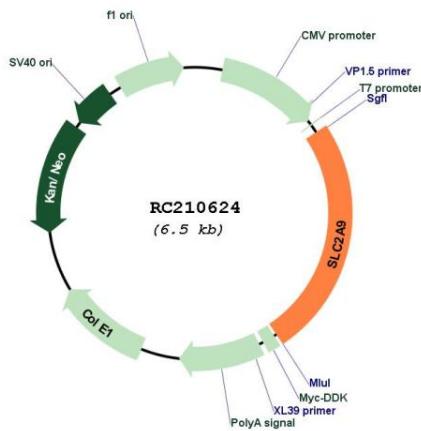
1. Centrifuge at 5,000xg for 5min.
2. Carefully open the tube and add 100ul of sterile water to dissolve the DNA.
3. Close the tube and incubate for 10 minutes at room temperature.
4. Briefly vortex the tube and then do a quick spin (less than 5000xg) to concentrate the liquid at the bottom.
5. Store the suspended plasmid at -20°C. The DNA is stable for at least one year from date of shipping when stored at -20°C.

**RefSeq:** [NM\\_020041.1](#)

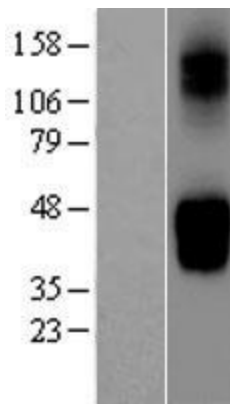
RefSeq Size: 1874 bp  
 RefSeq ORF: 1623 bp  
 Locus ID: 56606  
 UniProt ID: [Q9NRM0](#)  
 Cytogenetics: 4p16.1  
 Protein Families: Transmembrane  
 MW: 58.5 kDa

**Gene Summary:** This gene encodes a member of the SLC2A facilitative glucose transporter family. Members of this family play a significant role in maintaining glucose homeostasis. The encoded protein may play a role in the development and survival of chondrocytes in cartilage matrices. Two transcript variants encoding distinct isoforms have been identified for this gene. [provided by RefSeq, Jul 2008]

### Product images:



Circular map for RC210624



Western blot validation of overexpression lysate (Cat# [LY402749]) using anti-DDK antibody (Cat# [TA50011-100]). Left: Cell lysates from untransfected HEK293T cells; Right: Cell lysates from HEK293T cells transfected with RC210624 using transfection reagent MegaTran 2.0 (Cat# [TT210002]).