

Product datasheet for RC210619

PPAPDC1B (PLPP5) (NM_032483) Human Tagged ORF Clone

Product data:

Product Type: Expression Plasmids
Product Name: PPAPDC1B (PLPP5) (NM_032483) Human Tagged ORF Clone
Tag: Myc-DDK
Symbol: PPAPDC1B
Synonyms: DPPL1; HTPAP; PPAPDC1B
Mammalian Cell Selection: Neomycin
Vector: pCMV6-Entry (PS100001)
E. coli Selection: Kanamycin (25 ug/mL)
ORF Nucleotide Sequence: >RC210619 ORF sequence
 Red=Cloning site Blue=ORF Green=Tags(s)

TTTTGTAATACGACTCACTATAGGGCGGCCGGAATTCGTCGACTGGATCCGGTACCGAGGAGATCTGCC
 GCC**CGATCGCC**

ATGTGGCTCTACCGAACCCTACGTGGAGGCGGAGTATTTCCCAACCAAGCCGATGTTTGTATTGCAT
 TTCTCTCTCCACTGTCTGATCTTCTGGCCAAATTTCTCAAGAAGGCAGACACAAGAGACAGCAGACA
 AGCCTGCCTGGCTGCCAGCCTTGCCTGGCTCTGAATGGCGTCTTACCAACACAATAAACTGATCGTA
 GGGAGGCCACGCCAGATTTCTTCTACCGCTGCTCCCTGATGGGCTAGCCATTCTGACTTGATGTGTA
 CAGGGGATAAGGACGTGGTGAATGAGGGCCGAAAGAGCTTCCCAAGTGGACATTCTCCTTTGCATTTC
 TGGTCTGGCCTTTGCGTCTTCTACCTGGCAGGGAAGTTACACTGCTTACACCACAAGGCCGTGGGAAA
 TCTTGGAGTTCTGTGCCTTTCTGTACCTCTACTTTTTCGAGCTGTGATTGCACTGTCCCGCACATGTG
 ACTACAAGCATCACTGGCAAGGACCCTTTAAATGG

ACGCGTACGCGGCCGCTCGAGCAGAACTCATCTCAGAAGAGGATCTGGCAGCAAATGATATCCTGGATT
 ACAAGGATGACGACGATAAGGTTTAA

Protein Sequence: >RC210619 protein sequence
 Red=Cloning site Green=Tags(s)

MWLYRNPYVEAEYFPTKPMFVIAFLSPLSLIFLAKFLKKADTRDSRQACLAASLALALNGVFTNTIKLIV
 GRPRPDFFYRCFPDGLAHSMLMCTGDKDVVNEGRKSFPSGHSSFAFAGLAFASFYLAGKLHCFTPQGRGK
 SWRFCAFLSPLLFAAVIALSRTCDYKHHWQGPFKW

TRTRPLEQKLISEEDLAANDILDYKDDDDKV

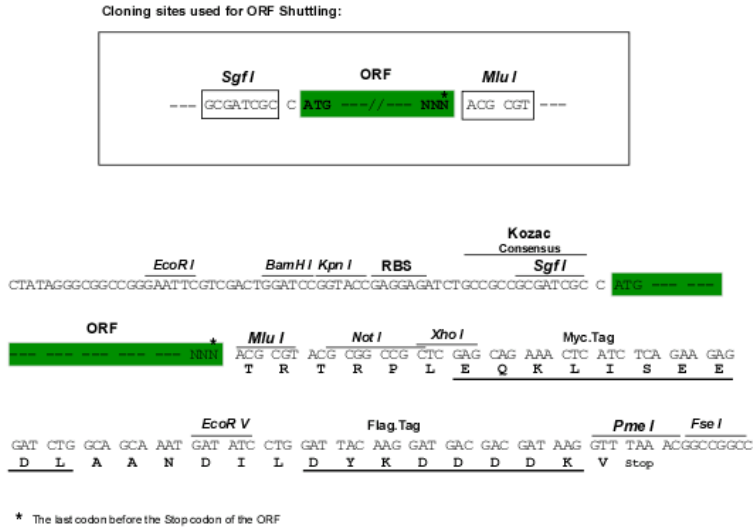
Chromatograms: https://cdn.origene.com/chromatograms/mk6544_f06.zip



[View online »](#)

Restriction Sites: SgfI-MluI

Cloning Scheme:



ACCN: NM_032483

ORF Size: 525 bp

OTI Disclaimer: The molecular sequence of this clone aligns with the gene accession number as a point of reference only. However, individual transcript sequences of the same gene can differ through naturally occurring variations (e.g. polymorphisms), each with its own valid existence. This clone is substantially in agreement with the reference, but a complete review of all prevailing variants is recommended prior to use. [More info](#)

OTI Annotation: This clone was engineered to express the complete ORF with an expression tag. Expression varies depending on the nature of the gene.

Components: The ORF clone is ion-exchange column purified and shipped in a 2D barcoded Matrix tube containing 10ug of transfection-ready, dried plasmid DNA (reconstitute with 100 ul of water).

Reconstitution Method:

1. Centrifuge at 5,000xg for 5min.
2. Carefully open the tube and add 100ul of sterile water to dissolve the DNA.
3. Close the tube and incubate for 10 minutes at room temperature.
4. Briefly vortex the tube and then do a quick spin (less than 5000xg) to concentrate the liquid at the bottom.
5. Store the suspended plasmid at -20°C. The DNA is stable for at least one year from date of shipping when stored at -20°C.

RefSeq: [NM_032483.2](#), [NP_115872.1](#)

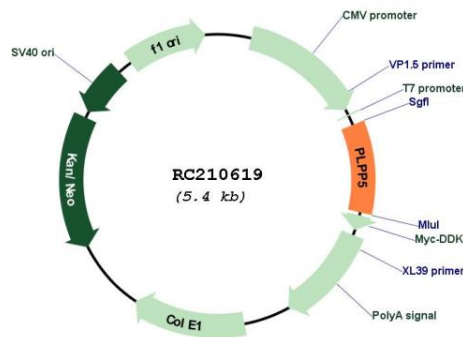
RefSeq Size: 880 bp

RefSeq ORF: 651 bp

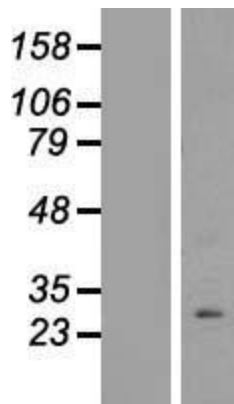
Locus ID: 84513

UniProt ID: [Q8NEB5](#)

Cytogenetics: 8p11.23
Domains: acidPPc
Protein Families: Transmembrane
MW: 19.8 kDa
Gene Summary: Displays magnesium-independent phosphatidate phosphatase activity in vitro. Catalyzes the conversion of phosphatidic acid to diacylglycerol. May be a metastatic suppressor for hepatocellular carcinoma.[UniProtKB/Swiss-Prot Function]

Product images:


Circular map for RC210619



Western blot validation of overexpression lysate (Cat# [LY410110]) using anti-DDK antibody (Cat# [TA50011-100]). Left: Cell lysates from untransfected HEK293T cells; Right: Cell lysates from HEK293T cells transfected with RC210619 using transfection reagent MegaTran 2.0 (Cat# [TT210002]).