

Product datasheet for **RC210618**

PHOSPHO2 (NM_001008489) Human Tagged ORF Clone

Product data:

Product Type:	Expression Plasmids
Product Name:	PHOSPHO2 (NM_001008489) Human Tagged ORF Clone
Tag:	Myc-DDK
Symbol:	PHOSPHO2
Mammalian Cell Selection:	Neomycin
Vector:	pCMV6-Entry (PS100001)
E. coli Selection:	Kanamycin (25 ug/mL)
ORF Nucleotide Sequence:	>RC210618 representing NM_001008489 Red=Cloning site Blue=ORF Green=Tags(s)

TTTTGTAATACGACTCACTATAGGGCGGCCGGAATTCGTCGACTGGATCCGGTACCGAGGAGATCTGCC
GCC**CGATCGCC**

ATGAAAATTTTGCTAGTTTTGACTTTGACAATACAATCATAGATGACAATAGTGACACTTGGATTGTAC
AATGTGCTCCCAACAAAAGCTTCTATTGAACTACGTGATTCTTATCGAAAAGGATTTGGACAGAATT
TATGGGCAGAGTCTTTAAGTATTTGGGAGATAAGGGTGTAAAGAGAACATGAAATGAAAAGAGCAGTGACA
TCATTGCCTTTCACTCCAGGGATGGTGGAACTCTCACTTTATAAGAAAGAATAAGGATAAATTTGACT
GCATTATTATTTAGATTCAAATTCGGTCTTCATAGATTGGGTTTTAGAAGCTGCCAGTTTTATGACAT
ATTTGATAAAGTGTTTACAAATCCAGCAGCTTTTAATAGCAATGGTCATCTCACTGTTGAAAATTATCAT
ACTCATTCTTGCAATAGATGCCCAAAGAATCTTTGCAAAAAGGTAGTTTTGATAGAATTTGTAGATAAAC
AGTTACAACAGGGAGTGAATTATACACAAATTGTTTATTTGGTGTGGTGGAAATGATGCTGTCCAGT
CACCTTTTTAAAGAATGATGATGTTGCCATGCCACGAAAGGATATACCTTACAGAAAACCTTTCCAGA
ATGTCTCAAAATCTTGAGCCTATGGAATATTCTGTTGTAGTTGGTCTCAGGTGTTGATATAATTTCTC
ATTTACAATTTCTAATAAAGGAT

ACGCGTACGCGGCCGCTCGAGCAGAAACTCATCTCAGAAGAGGATCTGGCAGCAAATGATATCCTGGATT
ACAAGGATGACGACGATAAGGTTTAA



[View online »](#)

Reconstitution Method:

1. Centrifuge at 5,000xg for 5min.
2. Carefully open the tube and add 100ul of sterile water to dissolve the DNA.
3. Close the tube and incubate for 10 minutes at room temperature.
4. Briefly vortex the tube and then do a quick spin (less than 5000xg) to concentrate the liquid at the bottom.
5. Store the suspended plasmid at -20°C. The DNA is stable for at least one year from date of shipping when stored at -20°C.

RefSeq: [NM_001008489.4](#)

RefSeq Size: 1138 bp

RefSeq ORF: 726 bp

Locus ID: 493911

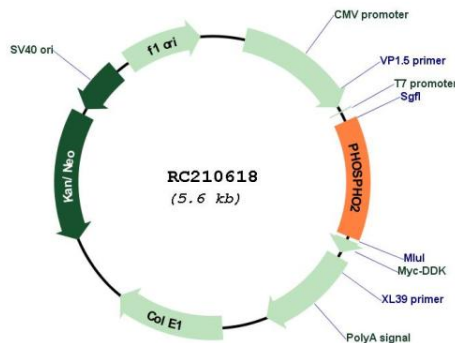
UniProt ID: [Q8TCD6](#)

Cytogenetics: 2q31.1

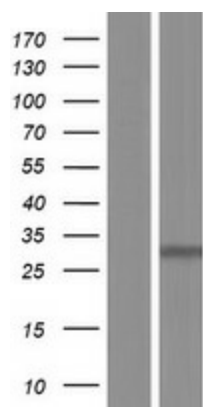
MW: 27.6 kDa

Gene Summary: Phosphatase that has high activity toward pyridoxal 5'-phosphate (PLP). Also active at much lower level toward pyrophosphate, phosphoethanolamine (PEA), phosphocholine (PCho), phospho-l-tyrosine, fructose-6-phosphate, p-nitrophenyl phosphate, and h-glycerophosphate. [UniProtKB/Swiss-Prot Function]

Product images:



Circular map for RC210618



Western blot validation of overexpression lysate (Cat# [LY423436]) using anti-DDK antibody (Cat# [TA50011-100]). Left: Cell lysates from untransfected HEK293T cells; Right: Cell lysates from HEK293T cells transfected with RC210618 using transfection reagent MegaTran 2.0 (Cat# [TT210002]).