

Product datasheet for **RC210616**

G3BP (G3BP1) (NM_198395) Human Tagged ORF Clone

Product data:

Product Type:	Expression Plasmids
Product Name:	G3BP (G3BP1) (NM_198395) Human Tagged ORF Clone
Tag:	Myc-DDK
Symbol:	G3BP
Synonyms:	G3BP; HDH-VIII
Mammalian Cell Selection:	Neomycin
Vector:	pCMV6-Entry (PS100001)
E. coli Selection:	Kanamycin (25 ug/mL)



[View online »](#)

ORF Nucleotide Sequence:

>RC210616 ORF sequence
 Red=Cloning site Blue=ORF Green=Tags(s)

TTTTGTAATACGACTCACTATAGGGCGGCCGGAATTCGTCGACTGGATCCGGTACCGAGGAGATCTGCC
 GCC**GCGATCGCC**

ATGGTGATGGAGAAGCCTAGTCCCTGCTGGTCGGCGGGAATTTGTGAGACAGTATTACACACTGCTGA
 ACCAGGCCCCAGACATGCTGCATAGATTTTATGAAAGAACTCTTCTTATGTCCATGGGGATTGGATTC
 AAATGAAAGCCAGCAGATGCAGTCTACGGACAGAAAGAAATCCACAGGAAAGTATGTCACAAAATTC
 ACCAACTGCCACCAAGATTGCGCATGTTGATGCTCATGCCACGCTAAATGATGGTGTGGTAGTCCAGG
 TGATGGGGCTTCTCTCTAACAACAACCAGGCTTTGAGGAGATTCATGCAAACGTTTGTCTTGTCTCTGA
 GGGGTCTGTTGCAATAAATTCTATGTTACAATGATATCTTCAGATACCAAGATGAGGTCTTGGTGGG
 TTTGTCAGTACGCTCAGGAGGAGTCTGAAGAAGAAGTAGAGGAACCTGAAGAAAGACAGCAAACACCTG
 AGGTGGTACCTGATGATTCTGGAACCTTCTATGATCAGGCAGTTGTCAGTAAATGACATGGAAGAATTT
 AGAGGAGCTGTTGCTGAACCAGAGCCTGATCCTGAACCAGAACCAGAACAAGAACCTGTATCTGAAATC
 CAAGAGGAAAAGCCTGAGCCAGTATTAGAAGAACTGCCCTGAGGATGCTCAGAAGAGTCTTCTCCAG
 CACCTGCAGACATAGCTCAGACAGTACAGGAAGACTTGAGGACATTTTCTTGGGCATCTGTGACCAGTAA
 GAATCTTCCACCCAGTGGAGCTGTTCCAGTTACTGGGATACCACCTCATGTTGTTAAAGTACCAGCTTCA
 CAGCCCGTCCAGAGTCTAAGCCTGAATCTCAGATTCACCACAAAGACCTCAGCGGGATCAAAGAGTGC
 GAGAACAACGAATAAATATTCTCCCAAGGGGACCCAGACCAATCCGTGAGGCTGGTGAAGCAAGGTGA
 CATTGAACCCGAAGAATGGTGAGACACCCTGACAGTACCAACTCTTATTGGCAACCTGCCTCATGAA
 GTGGACAAATCAGAGCTTAAAGATTTCTTTCAAAGTTATGGAAACGTGGTGGAGTTGCCCATTAACAGTG
 GTGGGAAATTACCAATTTTGGTTTTGTTGTTGGATGATTCTGAGCCTGTTGAGAAAGTCCTTAGCAA
 CAGGCCCATCATGTTTCAAGAGTGGTCCGCTGAATGTGCAAGAGAAGAAGACTCGAGCTGCCAGGGAA
 GCGCACCAGCAGATAATCGCCTTCGGGACCTGGAGGCCTCGAGGTGGGCTGGTGGTGAATGAGAG
 GCCCTCCCGTGGAGGCATGGTGCAGAAACCAGGATTTGGAGTGGGAAGGGGGCTTGCGCCACGGCAG

ACGCGTACGCGGCCGCTCGAGCAGAACTCATCTCAGAAGAGGATCTGGCAGCAAATGATATCTGGATT
 ACAAGGATGACGACGATAAGGTTTAA

Protein Sequence:

>RC210616 protein sequence
 Red=Cloning site Green=Tags(s)

MVMEKPSPLLVGREFVRQYYTLLNQAPDMLHRFYGKNSSVYHGGGLDSNGKPADAVYGQKEIHRKVMSONF
 TNCHTKIRHVDHATLNDGVVVQVMGLLNNNQALRRFMQTFVLAPEGSVANKFYVHNDIFRYQDEVFGG
 FVTEPQEESEEEVEEPEERQQTPEVVPDSDGTFYDQAVVSNMEEHLEEPVAEPEPDPEPEPEQEPVSEI
 QEEKPEPVLEETAPEDAQKSSSPAPADIAQTVQEDLRTFSWASVTSKNLPPSGAVPVTGIPPHVVKVPAS
 QPRPESKPESQIPPQRQRDQVREQRINIPPQRGPRPIREAGEQGDIEPRRMVVRHPDASHQLFIGNLPHE
 VDKSELKDFQSYGNVVELRINSGGKLPNFGFVVLDDSEPVQKVL SNRPIMFRGEVRLNVEEKTRAARE
 GDRRDNRLRPGGPRGGLGGMRGPPRGGMVQKPGFGVGRGLAPRQ

TRTRPLEQKLISEEDLAANDILDYKDDDDKV

Chromatograms:

https://cdn.origene.com/chromatograms/mk6153_a05.zip

Restriction Sites:

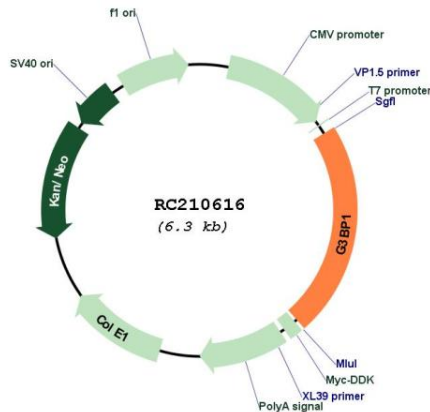
Sgfl-Mlul

Protein Families: Druggable Genome

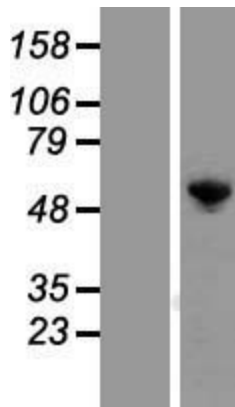
MW: 52.1 kDa

Gene Summary: This gene encodes one of the DNA-unwinding enzymes which prefers partially unwound 3'-tailed substrates and can also unwind partial RNA/DNA and RNA/RNA duplexes in an ATP-dependent fashion. This enzyme is a member of the heterogeneous nuclear RNA-binding proteins and is also an element of the Ras signal transduction pathway. It binds specifically to the Ras-GTPase-activating protein by associating with its SH3 domain. Several alternatively spliced transcript variants of this gene have been described, but the full-length nature of some of these variants has not been determined. [provided by RefSeq, Jul 2008]

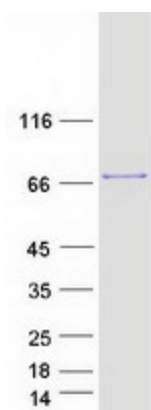
Product images:



Circular map for RC210616



Western blot validation of overexpression lysate (Cat# [LY405046]) using anti-DDK antibody (Cat# [TA50011-100]). Left: Cell lysates from untransfected HEK293T cells; Right: Cell lysates from HEK293T cells transfected with RC210616 using transfection reagent MegaTran 2.0 (Cat# [TT210002]).



Coomassie blue staining of purified G3BP1 protein (Cat# [TP310616]). The protein was produced from HEK293T cells transfected with G3BP1 cDNA clone (Cat# RC210616) using MegaTran 2.0 (Cat# [TT210002]).