

Product datasheet for **RC210613**

Mitochondrial ribosomal protein L11 (MRPL11) (NM_170738) Human Tagged ORF Clone

Product data:

Product Type:	Expression Plasmids
Product Name:	Mitochondrial ribosomal protein L11 (MRPL11) (NM_170738) Human Tagged ORF Clone
Tag:	Myc-DDK
Symbol:	Mitochondrial ribosomal protein L11
Synonyms:	CGI-113; L11MT; MRP-L11
Mammalian Cell Selection:	Neomycin
Vector:	pCMV6-Entry (PS100001)
E. coli Selection:	Kanamycin (25 ug/mL)
ORF Nucleotide Sequence:	>RC210613 representing NM_170738 Red=Cloning site Blue=ORF Green=Tags(s)

TTTTGTAATACGACTCACTATAGGGCGGCCGGAATTCGTCGACTGGATCCGGTACCGAGGAGATCTGCC
GCC**CGATCGCC**

ATGTCAAAGCTCGGCCGGGCCCGGGCCCTCAGGAAGCCCGAGAGAGCGTTTCCATCAACCAGTTTT
GCAAGGAGTTCAATGAGAGGACAAAGGACATCAAGGAAGGCATTCTCTGCCTACCAAGATTTTAGTGAA
GCCTGACAGGACATTTGAAATTAAGATTGGACAGCCCACTGTTTCTACTTCTGAAGGCAGCAGCTGGG
ATTGAAAAGGGGGCCCGCAAACAGGAAAGAGGTGGCAGGCCTGGTACCTTGAAGCATGTGTATGAGA
TTGCCCGCATCAAAGCTCAGGATGAGGCATTTGCCCTGCAGGATGTACCCCTGTCGTCTGTTGTCCGCTC
CATCATCGGGTCTGCCCCTTCTCTGGGCATTTCGGTGGTGAAGGACCTCAGTTCAGAAGAGCTTGCAGCT
TTCCAGAAGGAACGAGCCATCTTCTGGCTGCTCAGAAGGAGGCAGATTTGGCTGCCCAAGAAGAAGCTG
CCAAGAAG

ACGCGTACGCGGCCGCTCGAGCAGAACTCATCTCAGAAGAGGATCTGGCAGCAAATGATATCCTGGATT
ACAAGGATGACGACGATAAGGTTTAA

Protein Sequence:	>RC210613 representing NM_170738 Red=Cloning site Green=Tags(s)
-------------------	--

MSKLGRAARGLRKPERGVSINQFCKEFNERTKDIKEGIPLPTKILVKPDRTFEIKIGQPTVSYFLKAAAG
IEKGARQTGKEVAGLVTLKHVYEIARIKAQDEAFALQDVPLSSVVRSIIGSARSLGIRVVKDLSSSEELAA
FQKERAIFLAAQKEADLAAQEAAKK

TRTRPLEQKLISEEDLAANDILDYKDDDDKV

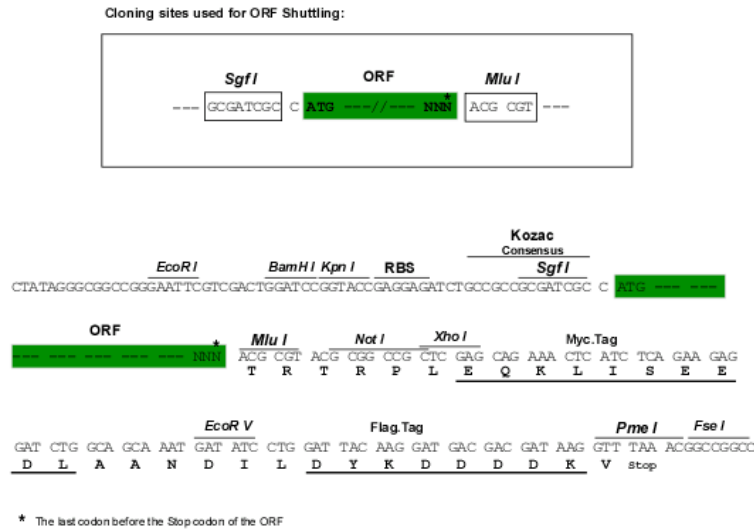
Chromatograms:	https://cdn.origene.com/chromatograms/ja1448_b12.zip
----------------	---



[View online »](#)

Restriction Sites: SgfI-MluI

Cloning Scheme:



ACCN: NM_170738

ORF Size: 498 bp

OTI Disclaimer: The molecular sequence of this clone aligns with the gene accession number as a point of reference only. However, individual transcript sequences of the same gene can differ through naturally occurring variations (e.g. polymorphisms), each with its own valid existence. This clone is substantially in agreement with the reference, but a complete review of all prevailing variants is recommended prior to use. [More info](#)

OTI Annotation: This clone was engineered to express the complete ORF with an expression tag. Expression varies depending on the nature of the gene.

Components: The ORF clone is ion-exchange column purified and shipped in a 2D barcoded Matrix tube containing 10ug of transfection-ready, dried plasmid DNA (reconstitute with 100 ul of water).

Reconstitution Method:

1. Centrifuge at 5,000xg for 5min.
2. Carefully open the tube and add 100ul of sterile water to dissolve the DNA.
3. Close the tube and incubate for 10 minutes at room temperature.
4. Briefly vortex the tube and then do a quick spin (less than 5000xg) to concentrate the liquid at the bottom.
5. Store the suspended plasmid at -20°C. The DNA is stable for at least one year from date of shipping when stored at -20°C.

Note: Plasmids are not sterile. For experiments where strict sterility is required, filtration with 0.22um filter is required.

RefSeq: [NM_170738.4](#)

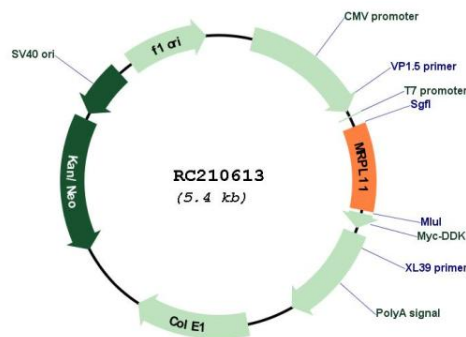
RefSeq Size: 762 bp

RefSeq ORF: 501 bp

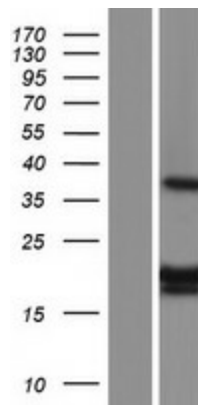
Locus ID: 65003
 UniProt ID: [Q9Y3B7](#)
 Cytogenetics: 11q13.2
 MW: 18 kDa

Gene Summary: This nuclear gene encodes a 39S subunit component of the mitochondrial ribosome. Alternative splicing results in multiple transcript variants. Pseudogenes for this gene are found on chromosomes 5 and 12. [provided by RefSeq, May 2014]

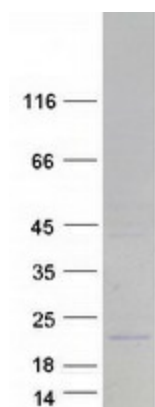
Product images:



Circular map for RC210613



Western blot validation of overexpression lysate (Cat# [LY406858]) using anti-DDK antibody (Cat# [TA50011-100]). Left: Cell lysates from untransfected HEK293T cells; Right: Cell lysates from HEK293T cells transfected with RC210613 using transfection reagent MegaTran 2.0 (Cat# [TT210002]).



Coomassie blue staining of purified MRPL11 protein (Cat# [TP310613]). The protein was produced from HEK293T cells transfected with MRPL11 cDNA clone (Cat# RC210613) using MegaTran 2.0 (Cat# [TT210002]).