

## Product datasheet for **RC210606L4V**

### alpha Synuclein (SNCA) (NM\_000345) Human Tagged ORF Clone Lentiviral Particle

#### Product data:

Product Type:	Lentiviral Particles
Product Name:	alpha Synuclein (SNCA) (NM_000345) Human Tagged ORF Clone Lentiviral Particle
Symbol:	alpha Synuclein
Synonyms:	NACP; PARK1; PARK4; PD1
Mammalian Cell Selection:	Puromycin
Vector:	pLenti-C-mGFP-P2A-Puro (PS100093)
Tag:	mGFP
ACCN:	NM_000345
ORF Size:	420 bp
ORF Nucleotide Sequence:	The ORF insert of this clone is exactly the same as(RC210606).
OTI Disclaimer:	The molecular sequence of this clone aligns with the gene accession number as a point of reference only. However, individual transcript sequences of the same gene can differ through naturally occurring variations (e.g. polymorphisms), each with its own valid existence. This clone is substantially in agreement with the reference, but a complete review of all prevailing variants is recommended prior to use. <a href="#">More info</a>
OTI Annotation:	This clone was engineered to express the complete ORF with an expression tag. Expression varies depending on the nature of the gene.
RefSeq:	<a href="#">NM_000345.2</a>
RefSeq Size:	1543 bp
RefSeq ORF:	423 bp
Locus ID:	6622
UniProt ID:	<a href="#">P37840</a>
Cytogenetics:	4q22.1
Domains:	Synuclein
Protein Families:	Druggable Genome



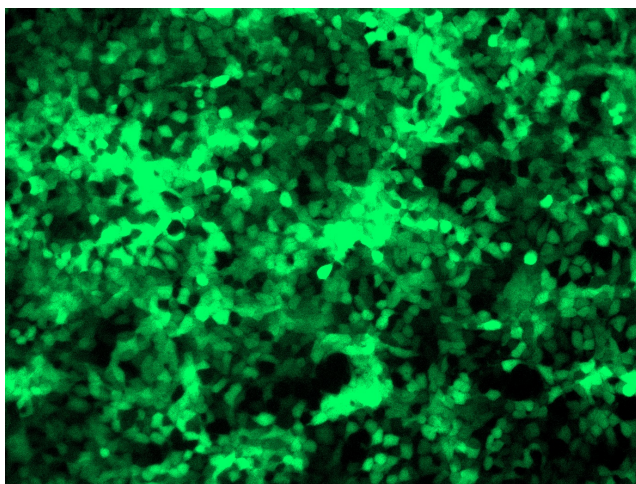
[View online »](#)

**Protein Pathways:** Alzheimer's disease, Parkinson's disease

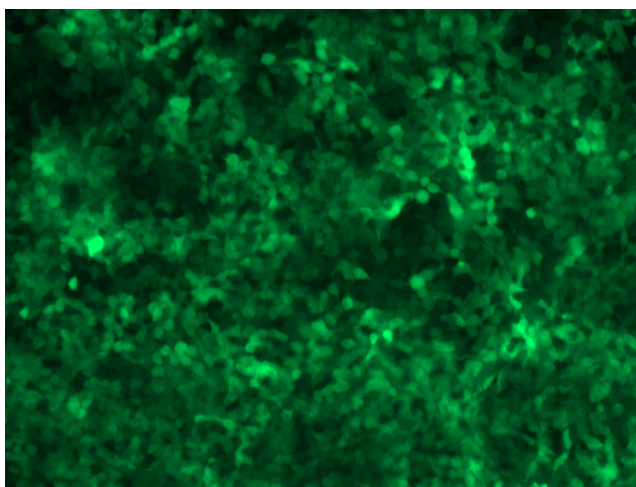
**MW:** 14.3 kDa

**Gene Summary:** Alpha-synuclein is a member of the synuclein family, which also includes beta- and gamma-synuclein. Synucleins are abundantly expressed in the brain and alpha- and beta-synuclein inhibit phospholipase D2 selectively. SNCA may serve to integrate presynaptic signaling and membrane trafficking. Defects in SNCA have been implicated in the pathogenesis of Parkinson disease. SNCA peptides are a major component of amyloid plaques in the brains of patients with Alzheimer's disease. Alternatively spliced transcripts encoding different isoforms have been identified for this gene. [provided by RefSeq, Feb 2016]

### Product images:



[RC210606L4] was used to prepare Lentiviral particles using [TR30037] packaging kit. HEK293T cells were transduced with RC210606L4V particle to overexpress human SNCA-mGFP fusion protein.



[RC210606L4] was used to prepare Lentiviral particles using [TR30037] packaging kit. HEK293T cells were transduced with RC210606L4V particle to overexpress human SNCA-mGFP fusion protein.