

## Product datasheet for **RC210605**

### TCP1 eta (CCT7) (NM\_006429) Human Tagged ORF Clone

#### Product data:

Product Type:	Expression Plasmids
Product Name:	TCP1 eta (CCT7) (NM_006429) Human Tagged ORF Clone
Tag:	Myc-DDK
Symbol:	TCP1 eta
Synonyms:	CCTETA; CCTH; NIP7-1; TCP1ETA
Mammalian Cell Selection:	Neomycin
Vector:	pCMV6-Entry (PS100001)
E. coli Selection:	Kanamycin (25 ug/mL)



[View online »](#)

**ORF Nucleotide Sequence:**

>RC210605 representing NM\_006429  
 Red=Cloning site Blue=ORF Green=Tags(s)

TTTTGTAATACGACTCACTATAGGGCGGCCGGAATTCGTCGACTGGATCCGGTACCGAGGAGATCTGCC  
 GCCGCGATCGCC

ATGATGCCACACCAGTTATCCTATTGAAAGAGGGGACTGATAGCTCCCAAGGCATCCCCAGCTTGTGA  
 GTAACATCAGTGCCTGCCAGGTGATTGCTGAGGCTGTAAGAAGTACCCTGGTCCCGTGGCATGGACAA  
 GCTTATTGTAGATGGCAGAGGCAAGCAACAATTTCTAATGATGGGGCCACAATTCTGAAACTTCTTGAT  
 GTTGTCATCCTGCAGCAAAGACTTTGGTAGACATTGCCAAATCCCAAGATGCTGAGGTGGGTGATGGCA  
 CCACCTCAGTGACCTTGTGGCTGCAGAGTTTCTGAAGCAGGTGAAACCCATGTGGAGGAAGGTTTACA  
 CCCCAGATCATCATTGAGCTTCCGCACAGCCACCCAGCTGGCAGTTAACAAGATCAAAGAGATTGCT  
 GTGACCGTGAAGAAGGCAGATAAAGTGGAGCAGAGGAAGCTGCTGAAAAGTGTGCCATGACCGCTCTGA  
 GCTCCAAGCTGATCTCCAGCAGAAAGCTTTCTTTGCTAAGATGGTGGTGGATGCAGTATGATGCTCGA  
 TGATTTGCTGCAGCTTAAATGATTGGAATCAAGAAGGTACAGGGTGGAGCCCTCGAGGATTCTCAGCTG  
 GTAGCTGGTGTTCATTCAAGAAGACTTTCTCTTACGCTGGGTTTGAAATGCAACCCAAAAAGTACCACA  
 ATCCCAAGATTGCCCTTTGAAATGTCGAGCTCGAGTTGAAAGCTGAGAAAAGCAATGCTGAGATAAGAGT  
 CCACACAGTTGAGGATTACAGGCAATTGTTGATGCTGAGTGGAAACATTCTATGACAAGTTAGAGAAG  
 ATCCATCATTCTGGAGCCAAAGTTGCTTGTCCAAACTCCCCATTGGGGATGTGGCCACCCAGTACTTTG  
 CTGACAGGGACATGTTCTGTGCTGGCCGAGTACCTGAGGAGGATCTGAAGAGGACAATGATGGCCTGTGG  
 AGGCTCAATCCAGACCAGTGTGAATGCTCTGTGACGAGATGTGCTGGTTCGATGCCAGGTGTTTGAAGAG  
 ACCCAGATTGGAGCGGAGAGGTACAATTTTTTACTGGCTGCCCAAGGCCAAGACATGCACCTTCATT  
 TCCGTGGCGCGCCGAGCAGTTTATGGAGGAGACAGAGCGTCTCTGCATGATCCATCATGATGCTCAG  
 GAGGGCCATCAAGAATGATTCAAGTGGTGGCTGGTGGCGGGCCATTGAGATGGAACCTCTCCAAGTACCTG  
 CGGGATTACTCAAGGACTATTCCAGGAAAACAGCAGCTGTTGATTGGGGCATATGCCAAGCCTTGAGAGA  
 TTATCCCACGCCAGCTGTGTGACAATGCTGGCTTTGATGCCACAAACATTCTCAACAAGCTGCGGGCTCG  
 GCATGCCAGGGGGTACATGGTATGGAGTAGACATCAACAACGAGGACATTGCTGACAACCTTTGAAGCT  
 TTCGTGTGGGAGCCAGCTATGGTGGGATCAATGCGCTGACAGCAGCCTCTGAGGCTGCGTGCCTGATCG  
 TGTCTGTAGATGAAACCATCAAGAACCCCGCTCGACTGTGGATGCTCCACAGCAGCAGGCCGGGGCCG  
 TGGTCGTGGCCGCCCCAC

ACGCGTACGCGGCCGCTCGAGCAGAAACTCATCTCAGAAGAGGATCTGGCAGCAAATGATATCCTGGATT  
 ACAAGGATGACGACGATAAGGTTTAA

**Protein Sequence:**

>RC210605 representing NM\_006429  
 Red=Cloning site Green=Tags(s)

MMPTPVIILLKEGTDSSQGIPQLVSNISACQVIAEAVRRTLGPGRMDKLIVDGRGKATISNDGATILKLLD  
 VVHPAAKTLVDIAKSQDAEVDGTTSVTLAAEFKQVKPYVEEGLHPQIIIRAFRTATQLAVNKIKEIA  
 VTVKKADKVEQRKLLLEKAMTALSSKLISQQAFFAKMVVDVAVMLDDLQLKMIKIKVQGGALEDSQL  
 VAGVAFKKTFSYAGFEMQPKKYHNPKIALLNVELELKAEKDNAEIRVHTVEDYQAIIVDAEWNILYDKLEK  
 IHHSGAKVVL SKLPIGDVATQYFADRFMFCAGRVPEEDLKRTMMACGGSIQTSVNL SADVLGRCQVFEE  
 TQIGGERYNFFTGCPKAKTCTFILRGAEQFMEETERSLHDAIMIVRRAIKNDSVVAGGGAIEMELSKYL  
 RDYSRTIPGKQQLLIGAYAKALEIIPRQLCDNAGFDATNILNKLRARHAQGGTWTYGVVDINNEDIADNFEA  
 FVWEPAMVRINALTAASEAACLI VSVDETIKNPRSTVDAPTAAGRGRGRGRPH

TRTRPLEQKLISEEDLAANDILDYKDDDDKV

**Chromatograms:**

[https://cdn.origene.com/chromatograms/mg4804\\_f01.zip](https://cdn.origene.com/chromatograms/mg4804_f01.zip)

**Restriction Sites:**

SgfI-MluI

**Cloning Scheme:**


**ACCN:** NM\_006429

**ORF Size:** 1629 bp

**OTI Disclaimer:** The molecular sequence of this clone aligns with the gene accession number as a point of reference only. However, individual transcript sequences of the same gene can differ through naturally occurring variations (e.g. polymorphisms), each with its own valid existence. This clone is substantially in agreement with the reference, but a complete review of all prevailing variants is recommended prior to use. [More info](#)

**OTI Annotation:** This clone was engineered to express the complete ORF with an expression tag. Expression varies depending on the nature of the gene.

**Components:** The ORF clone is ion-exchange column purified and shipped in a 2D barcoded Matrix tube containing 10ug of transfection-ready, dried plasmid DNA (reconstitute with 100 ul of water).

**Reconstitution Method:**

1. Centrifuge at 5,000xg for 5min.
2. Carefully open the tube and add 100ul of sterile water to dissolve the DNA.
3. Close the tube and incubate for 10 minutes at room temperature.
4. Briefly vortex the tube and then do a quick spin (less than 5000xg) to concentrate the liquid at the bottom.
5. Store the suspended plasmid at -20°C. The DNA is stable for at least one year from date of shipping when stored at -20°C.

**Note:** Plasmids are not sterile. For experiments where strict sterility is required, filtration with 0.22um filter is required.

**RefSeq:** [NM\\_006429.4](#)

**RefSeq Size:** 1892 bp

**RefSeq ORF:** 1632 bp

**Locus ID:** 10574

UniProt ID: [Q99832](#)

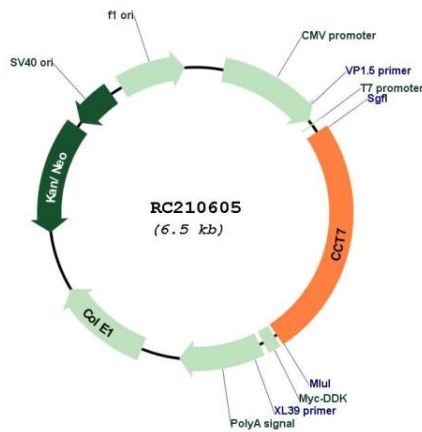
Cytogenetics: 2p13.2

Domains: cpn60\_TCP1

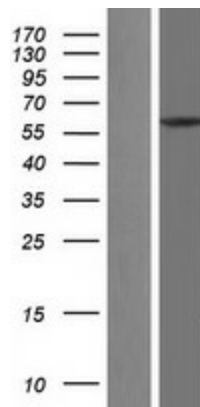
MW: 59.2 kDa

**Gene Summary:** This gene encodes a molecular chaperone that is a member of the chaperonin containing TCP1 complex (CCT), also known as the TCP1 ring complex (TRiC). This complex consists of two identical stacked rings, each containing eight different proteins. Unfolded polypeptides enter the central cavity of the complex and are folded in an ATP-dependent manner. The complex folds various proteins, including actin and tubulin. Alternative splicing results in multiple transcript variants. Related pseudogenes have been identified on chromosomes 5 and 6. [provided by RefSeq, Oct 2009]

**Product images:**



Circular map for RC210605



Western blot validation of overexpression lysate (Cat# [LY416654]) using anti-DDK antibody (Cat# [TA50011-100]). Left: Cell lysates from untransfected HEK293T cells; Right: Cell lysates from HEK293T cells transfected with RC210605 using transfection reagent MegaTran 2.0 (Cat# [TT210002]).