

Product datasheet for **RC210603**

PLRG1 (NM_002669) Human Tagged ORF Clone

Product data:

Product Type:	Expression Plasmids
Product Name:	PLRG1 (NM_002669) Human Tagged ORF Clone
Tag:	Myc-DDK
Symbol:	PLRG1
Synonyms:	Cwc1; PRL1; PRP46; PRPF46; TANGO4
Mammalian Cell Selection:	Neomycin
Vector:	pCMV6-Entry (PS100001)
E. coli Selection:	Kanamycin (25 ug/mL)



[View online »](#)

ORF Nucleotide Sequence:

>RC210603 representing NM_002669
 Red=Cloning site Blue=ORF Green=Tags(s)

TTTTGTAATACGACTCACTATAGGGCGGCCGGAATTCGTCGACTGGATCCGGTACCGAGGAGATCTGCC
 GCC**CGCATCGCC**

ATGGTCGAGGAGGTACAGAAACATTCTGTACACACCCCTTGTTTCAGGTCGTTGAAGAGGACCCATGACA
 TGTTTGTAGCTGATAATGGAAAACCTGTGCCTTTAGATGAAGAGAGTCACAAACGAAAAATGGCAATCAA
 GCTTCGTAATGAGTATGGTCCTGTGTTGCATATGCCTACTTCAAAAAGAAAATCTTAAAGAGAAGGTCCT
 CAGAATGCAACGGATTTCATATGTTTCATAAACAGTACCCTGCCAATCAAGGACAAGAAGTTGAATACTTTG
 TGGCAGGTACACATCCATACCCACCAGGACCTGGGGTTGCTTTGACAGCAGATACTAAGATCCAGAGAAT
 GCCAAGTGAATCAGCTGCACAGTCCTTAGCGGTGGCATTACCTTTGCAGACCAAGGCTGATGCAAAATCGT
 ACTGCCCTAGTGAAGTGAATACCGACATCCTGGGGCTTCTGACCGTCCACAGCCTACAGCGATGAATT
 CAATTGTCATGGAGACTGGCAATACCAAGAACTCTGCACTGATGGCTAAAAAGCCCTACAATGCCAAA
 ACCCCAGTGGCACCCACCGTGGAACTCTACAGGGTTATCAGTGGGCATCTTGGCTGGGTTGATGTATT
 GCTGTGGAACCTGGAAATCAGTGGTTTGTACTGGATCTGCTGACAGAATATAAAGATCTGGGACTTGG
 CTAGTGGCAAATAAAACCTGTCATTGACTGGGCATATTAGTACTGTGCGGGCGTGATAGTAAGCACAAG
 GAGCCCATATCTGTTCTTGTGGAGAAGACAAACAAGTGAATGCTGGGATCTCGAATACAATAAGGTT
 ATACGGCATTATCATGGACATTAAGTGCAGTGTATGGTTTGATTTGCACCCGACAATCGATGTGTTGG
 TAACCTGTAGTCGAGATCAACTGCACGGATTTGGGATGTGAGAACTAAAGCCAGTGTACACACATTATC
 TGGACATACAAATGCAGTTGCTACAGTGAGATGTGAGGCTGCAGAACCACAAATATTACAGGAAGCCAT
 GATACTACAATTCGATTATGGGATCTGGTGGCTGGAAAAACAAGAGTGACATTAACAAATCACAAAAAT
 CAGTTAGGGCTGTGGTTTACATCCAAGACATTACACATTTGCATCTGGTTCTCCAGATAACATAAAGCA
 GTGGAAATTCCTGATGGAAGTTTCATTCAAAATCTTTCGGTCAATATGCTATTATAACACATTGACG
 GTAAATCTGATGGAGTCTTGTATCTGGAGCTGACAATGGCACCATGCATCTTTGGGACTGGAGAAGT
 GCTACAATTTTCAGAGAGTTCACGCAGCTGTGCAACCTGGGCTTTGGACAGTGAATCAGGAATATTTGC
 TTGTGCTTTTGCAGTCTGAAAGTCGATTACTAACAGCTGAAGCTGATAAAACCATTAAAGTATACAGA
 GAGGATGACACAGCCACAGAAGAACTCATCCAGTCAAGTGGAAACCAGAAATTATCAAGAGAAAGAGAT
 TT

ACGCGTACGCGGCCGCTCGAGCAGAAACTCATCTCAGAAGAGGATCTGGCAGCAAATGATATCCTGGATT
 ACAAGGATGACGACGATAAGGTTTAA

Protein Sequence:

>RC210603 representing NM_002669
 Red=Cloning site Green=Tags(s)

MVEEVQKHSVHTLVFRSLKRTHDMFVADNGKPVPLDEESHKRKMAIKLRNEYGPVLMPTSKENLKEKGP
 QNATDSYVHKQYPANQGEVEYFVAGTHPYPPGVALTADTKIQRMPSESAQSLAVALPLQTKADANR
 TAPSGSEYRHPGASDRPQPTAMNSIVMETGNTKNSALMAKKAPTMPKPQWHPWKLRYVLSGHLGWVRCI
 AVEPGNQWFTGSADRTIKIWDLASGKLLSLTGHISTVRGVIIVSTRSPYLFSCGEDKQVKCWDLEYNKV
 IRHYHGHLSAVYGLDLHPTIDVLVTCSDSTARIWDVVRTKASVHTLSGHTNAVAVTRCQAAEPQIITGSH
 DTTIRLWDLVAGKTRVTLTNHKKSVRAVVLHPRHYTFASGSPDNKQWKFDPGSFIQNLSGHNAIINTLT
 VNSDGLVLSGADNGTMHLWDWRTGYNFQRVHAAVQPGSLDSESGIFACAFDQSESRLLTAEADKTIKVVYR
 EDDTATEETHPVSWKPEIIRKRF

TRTRPLEQKLISEEDLAANDILDYKDDDDKV

Chromatograms:

https://cdn.origene.com/chromatograms/mk8114_e08.zip

Restriction Sites:

Sgfl-MluI

Cloning Scheme:


ACCN: NM_002669

ORF Size: 1542 bp

OTI Disclaimer: The molecular sequence of this clone aligns with the gene accession number as a point of reference only. However, individual transcript sequences of the same gene can differ through naturally occurring variations (e.g. polymorphisms), each with its own valid existence. This clone is substantially in agreement with the reference, but a complete review of all prevailing variants is recommended prior to use. [More info](#)

OTI Annotation: This clone was engineered to express the complete ORF with an expression tag. Expression varies depending on the nature of the gene.

Components: The ORF clone is ion-exchange column purified and shipped in a 2D barcoded Matrix tube containing 10ug of transfection-ready, dried plasmid DNA (reconstitute with 100 ul of water).

- Reconstitution Method:**
1. Centrifuge at 5,000xg for 5min.
 2. Carefully open the tube and add 100ul of sterile water to dissolve the DNA.
 3. Close the tube and incubate for 10 minutes at room temperature.
 4. Briefly vortex the tube and then do a quick spin (less than 5000xg) to concentrate the liquid at the bottom.
 5. Store the suspended plasmid at -20°C. The DNA is stable for at least one year from date of shipping when stored at -20°C.

RefSeq: [NM_002669.4](#)

RefSeq Size: 3374 bp

RefSeq ORF: 1545 bp

Locus ID: 5356

UniProt ID: [O43660](#)

Cytogenetics: 4q31.3

Domains: WD40

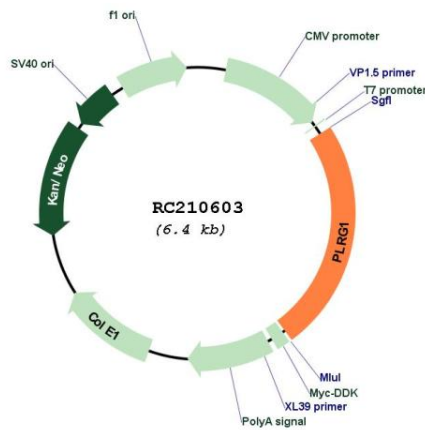
Protein Families: Transcription Factors

Protein Pathways: Spliceosome

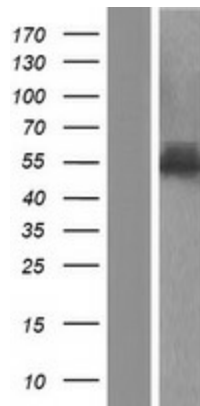
MW: 57.2 kDa

Gene Summary: This gene encodes a core component of the cell division cycle 5-like (CDC5L) complex. The CDC5L complex is part of the spliceosome and is required for pre-mRNA splicing. The encoded protein plays a critical role in alternative splice site selection. Alternatively spliced transcript variants encoding multiple isoforms have been observed for this gene. [provided by RefSeq, Jan 2011]

Product images:



Circular map for RC210603



Western blot validation of overexpression lysate (Cat# [LY419175]) using anti-DDK antibody (Cat# [TA50011-100]). Left: Cell lysates from untransfected HEK293T cells; Right: Cell lysates from HEK293T cells transfected with RC210603 using transfection reagent MegaTran 2.0 (Cat# [TT210002]).