

## Product datasheet for RC210594

### RAB6A (NM\_198896) Human Tagged ORF Clone

#### Product data:

**Product Type:** Expression Plasmids  
**Product Name:** RAB6A (NM\_198896) Human Tagged ORF Clone  
**Tag:** Myc-DDK  
**Symbol:** RAB6A  
**Synonyms:** RAB6  
**Mammalian Cell Selection:** Neomycin  
**Vector:** pCMV6-Entry (PS100001)  
**E. coli Selection:** Kanamycin (25 ug/mL)  
**ORF Nucleotide Sequence:** >RC210594 ORF sequence  
 Red=Cloning site Blue=ORF Green=Tags(s)

TTTTGTAATACGACTCACTATAGGGCGCCGGGAATTCGTCGACTGGATCCGGTACCGAGGAGATCTGCC  
 GCCCGGATCGCC

ATGTCCACGGGCGGAGACTTCGGGAATCCGCTGAGGAAATCAAGCTGGTGTTCCTGGGGAGCAAAGCG  
 TTGAAAGACATCTTTGATCACCAGATTCATGTATGACAGTTTTGACAACACCTATCAGGCAACAATTGG  
 CATTGACTTTTTATCAAAAATGTACTTGGAGGATCGAACAGTACGATTGCAATTATGGGACACAGCA  
 GGTC AAGAGCGGTT CAGGAGCTTGATTCCTAGCTACATTCGTGACTCCACTGTGGCAGTTGTTGTTTATG  
 ATATCACAAATGTTAACTCATTCCAGCAAACACAAAGTGGATTGATGATGTCAGAACAGAAAGAGGAAG  
 TGATGTTATCATCATGCTAGTAGGAAATAAACAGATCTTGCTGACAAGAGGCAAGTGCAATTGAGGAG  
 GGAGAGAGGAAAGCCAAAGAGCTGAATGTTATGTTTATTGAAACTAGTGCAAAAGCTGGATACAATGTAA  
 AGCAGCTCTTTCGACGTGTAGCAGCAGCTTTGCCGGGAATGAAAAGCACACAGGACAGAAGCAGAGAAGA  
 TATGATTGACATAAAAAGCTGAAAAGCCTCAGGAGCAACCAGTCAGTGAAGGAGGCTGTTCTCTGC

ACGCGTACGCGGCCGCTCGAGCAGAACTCATCTCAGAAGAGGATCTGGCAGCAAATGATATCCTGGATT  
 ACAAGGATGACGACGATAAGGTTTAA

**Protein Sequence:** >RC210594 protein sequence  
 Red=Cloning site Green=Tags(s)

MSTGGDFGNPLRKFVFLGQSVGKTSLITRFMYDSFDNTYQATIGIDFLSKTMYLEDRTVRLQLWDTA  
 GQERFRSLIPSYIRDSTVAVVVYDITNVNSFQTTKWIDDVTERGSDVIIMLVGNKTDLADKRQVSIIE  
 GERKAKELNVMFIETSAKAGYNVQKLFRRVAAALPGMESTQDRSREDMIDIKLEKPEQVSEGGCSC

TRTRPLEQKLISEEDLAANDILDYKDDDDKV





UniProt ID: [P20340](#)

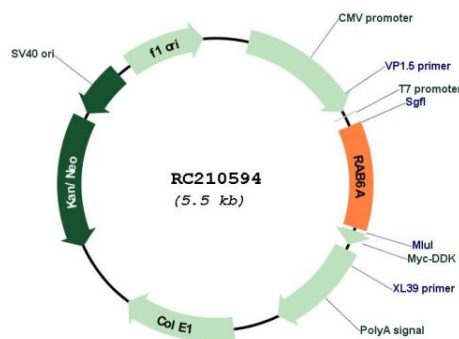
Cytogenetics: 11q13.4

Protein Families: Druggable Genome

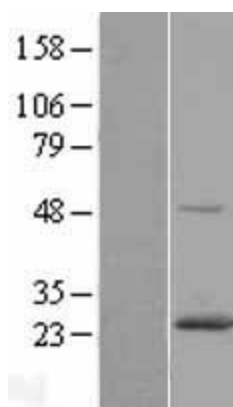
MW: 23.6 kDa

**Gene Summary:** This gene encodes a member of the RAB family, which belongs to the small GTPase superfamily. GTPases of the RAB family bind to various effectors to regulate the targeting and fusion of transport carriers to acceptor compartments. This protein is located at the Golgi apparatus, which regulates trafficking in both a retrograde (from early endosomes and Golgi to the endoplasmic reticulum) and an anterograde (from the Golgi to the plasma membrane) directions. Myosin II is an effector of this protein in these processes. This protein is also involved in assembly of human cytomegalovirus (HCMV) by interacting with the cellular protein Bicaudal D1, which interacts with the HCMV virion tegument protein, pp150. Multiple alternatively spliced transcript variants encoding different isoforms have been identified. [provided by RefSeq, Aug 2011]

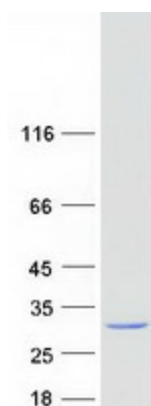
**Product images:**



Circular map for RC210594



Western blot validation of overexpression lysate (Cat# [LY404772]) using anti-DDK antibody (Cat# [TA50011-100]). Left: Cell lysates from untransfected HEK293T cells; Right: Cell lysates from HEK293T cells transfected with RC210594 using transfection reagent MegaTran 2.0 (Cat# [TT210002]).



Coomassie blue staining of purified RAB6A protein (Cat# [TP310594]). The protein was produced from HEK293T cells transfected with RAB6A cDNA clone (Cat# RC210594) using MegaTran 2.0 (Cat# [TT210002]).