

Product datasheet for **RC210591**

KAT5 (NM_182709) Human Tagged ORF Clone

Product data:

Product Type:	Expression Plasmids
Product Name:	KAT5 (NM_182709) Human Tagged ORF Clone
Tag:	Myc-DDK
Symbol:	KAT5
Synonyms:	cPLA2; ESA1; HTATIP; HTATIP1; NEDFASB; PLIP; TIP; TIP60; ZC2HC5
Mammalian Cell Selection:	Neomycin
Vector:	pCMV6-Entry (PS100001)
E. coli Selection:	Kanamycin (25 ug/mL)



[View online »](#)

ORF Nucleotide Sequence:

>RC210591 ORF sequence
 Red=Cloning site Blue=ORF Green=Tags(s)

TTTTGTAATACGACTCACTATAGGGCGGCCGGAATTCGTCGACTGGATCCGGTACCGAGGAGATCTGCC
 GCC**CGCATCGCC**

ATGGCGGAGGTGGGGGAGATAATCGAGGGCTGCCGCCTACCCGTGCTGCGGCGGAACCAGGACAACGAAG
 ATGAGTGGCCCTGGCCGAGATCCTGAGCGTGAAGGACATCAGTGGCCGGAAGCTTTTCTACGTCCATTA
 CATTGACTTCAACAAACGTCTGGATGAATGGGTGACGCATGAGCGGCTGGACCTAAAGAAGATCCAGTTC
 CCCAAGAAAGAGGCCAAGACCCCACTAAGAACGGACTTCTGGGTCCCCTCTGGCTCTCCAGAGAGAG
 AGGTGAAACGGAAGGTGGAGGTGGTTTACCAGCAACTCCAGTGCCAGCGAGACAGCCCGCCTCGGT
 TTTTCCCAGAATGGAGCCGCCGTAGGGCAGTGGCAGCCAGCCAGGACGGAAGCGAAAATCGAATTGT
 TTGGGCACTGATGAGGACTCCAGGACAGCTCTGATGGAATACCGTCAGCACCACGCATGACTGGCAGCC
 TGGTGTCTGATCGAAGCCAGCAGACATCGTACCCGGATGAAGAACATTGAGTGCATTGAGCTGGGCCG
 GCACCGCCTCAAGCCGTGGTACTTCTCCCCTACCCACAGGAACCTACCACATTGCTGTCTCTACCTG
 TGGGATTTCTGCCTCAAGTACGGCCGTAGTCTCAAGTGTCTTCAGCGTCAATTTGACCAAGTGTGACCTAC
 GACATCTCCAGGCAATGAGATTTACCGCAAGGGCACCATCTCCTTCTTTGAGATTGATGGACGTAAAGAA
 CAAGAGTTATCCGAAACCTGTGTCTTTTGGCCAAGTGTTCCTTGACCATAAGACACTGTAATGAC
 ACAGACCCTTTCTCTTACGTGATGACAGAGTATGACTGTAAGGGCTTCCACATCGTGGGCTACTTCT
 CCAAGGAGAAAGAATCAACGGAAGACTACAATGTGGCCTGCATCCTAACCTGCCTCCCTACCAGCGCCG
 GGGCTACGGCAAGCTGCTGATCGAGTTCAGCTATGAAGTCTCAAAGTGAAGGGGAAAACAGGGACCCCT
 GAGAAGCCCTCTCAGACCTTGGCCTCCTATCCTATCGAAGTACTGGTCCCAGACCATCTGGAGATCC
 TGATGGGCTGAAGTGGAGAGCGGGGAGAGGCCACAGATCACCATCAATGAGATTAGTGAATCACCAG
 CATCAAGAAGGAGGATGTCATCTCCACTCTGCAGTACCTCAATCTCATCACTACTACAAGGGCCAGTAC
 ATCCTCACACTGTCAGAGGACATCGTGGATGGCCATGAGCGGGCCATGCTCAAGCGGCTCCTGCGGATCG
 ACTCAAGTGTCTGCACTTCACTCCAAGGACTGGAGCAAGAGGGGGAAGTGG

ACGCGTACGCGGCCGCTCGAGCAGAACTCATCTCAGAAGAGGATCTGGCAGCAAATGATATCCTGGATT
 ACAAGGATGACGACGATAAGGTTTAA

Protein Sequence:

>RC210591 protein sequence
 Red=Cloning site Green=Tags(s)

MAEVGEIIEGCRLPVLRNQNEDWPLAEILSVKDISGRKLFYVHYIDFNKRLDEWVTHEERLDLKKIQF
 PKKEAKTPTKNGLPGRPGSPEREVKKRKEVVPATPVPSETAPASVFPQNGAARRAVAAQPGRKRKSN
 LGTDEDSQDSSDGIPASPRMTGSLVSDRSHDDIVTRMKNIECIELGRHRLKPWFYSPYPQELTTLPVLYL
 CEFCLKYGRSLKCLRHLTKCDLRHPPGNEIYRGTISFFEIDGRKNKSYSQNLCLLAKCFDHTLYYD
 TDPFLFYVMTEYDCKGFHIVGYFSKEKESTEDYNVACILTLPPYQRRGYGKLLIEFSYELSKVEGTGTP
 EKPLSDLGLLSYRSYWSQTILEILMGLKSESGERPQITINEISEITSIKKEDVISTLQYLNINYYKQY
 ILTLESDIVDGHHERAMLKRLRLRIDSCLHFTPKDWSKRGKW

TRTRPLEQKLISEEDLAANDILDYKDDDDKV

Chromatograms:

https://cdn.origene.com/chromatograms/mk6542_c06.zip

Restriction Sites:

Sgfl-Mlul

Cloning Scheme:

ACCN: NM_182709

ORF Size: 1383 bp

OTI Disclaimer: Due to the inherent nature of this plasmid, standard methods to replicate additional amounts of DNA in E. coli are highly likely to result in mutations and/or rearrangements. Therefore, OriGene does not guarantee the capability to replicate this plasmid DNA. Additional amounts of DNA can be purchased from OriGene with batch-specific, full-sequence verification at a reduced cost. Please contact our customer care team at custsupport@origene.com or by calling 301.340.3188 option 3 for pricing and delivery.

The molecular sequence of this clone aligns with the gene accession number as a point of reference only. However, individual transcript sequences of the same gene can differ through naturally occurring variations (e.g. polymorphisms), each with its own valid existence. This clone is substantially in agreement with the reference, but a complete review of all prevailing variants is recommended prior to use. [More info](#)

OTI Annotation: This clone was engineered to express the complete ORF with an expression tag. Expression varies depending on the nature of the gene.

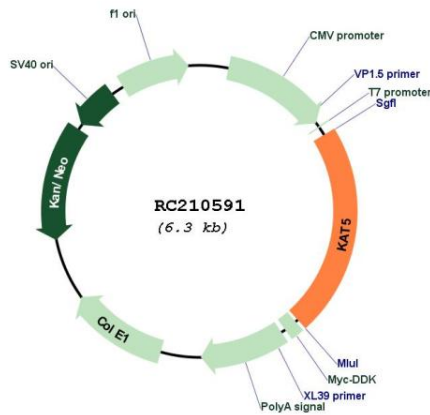
Components: The ORF clone is ion-exchange column purified and shipped in a 2D barcoded Matrix tube containing 10ug of transfection-ready, dried plasmid DNA (reconstitute with 100 ul of water).

- Reconstitution Method:**
1. Centrifuge at 5,000xg for 5min.
 2. Carefully open the tube and add 100ul of sterile water to dissolve the DNA.
 3. Close the tube and incubate for 10 minutes at room temperature.
 4. Briefly vortex the tube and then do a quick spin (less than 5000xg) to concentrate the liquid at the bottom.
 5. Store the suspended plasmid at -20°C. The DNA is stable for at least one year from date of shipping when stored at -20°C.

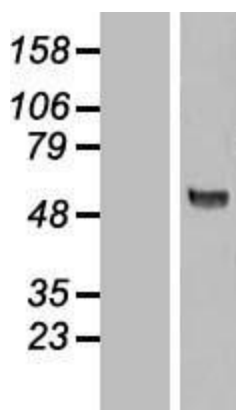
RefSeq: [NM_182709.3](#)
RefSeq Size: 2092 bp
RefSeq ORF: 1386 bp
Locus ID: 10524
UniProt ID: [Q92993](#)
Cytogenetics: 11q13.1
Protein Families: Druggable Genome, Transcription Factors
MW: 53.1 kDa

Gene Summary: The protein encoded by this gene belongs to the MYST family of histone acetyl transferases (HATs) and was originally isolated as an HIV-1 TAT-interactive protein. HATs play important roles in regulating chromatin remodeling, transcription and other nuclear processes by acetylating histone and nonhistone proteins. This protein is a histone acetylase that has a role in DNA repair and apoptosis and is thought to play an important role in signal transduction. Alternative splicing of this gene results in multiple transcript variants. [provided by RefSeq, Jul 2008]

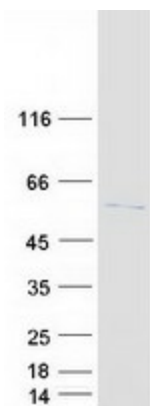
Product images:



Circular map for RC210591



Western blot validation of overexpression lysate (Cat# [LY405422]) using anti-DDK antibody (Cat# [TA50011-100]). Left: Cell lysates from untransfected HEK293T cells; Right: Cell lysates from HEK293T cells transfected with RC210591 using transfection reagent MegaTran 2.0 (Cat# [TT210002]).



Coomassie blue staining of purified KAT5 protein (Cat# [TP310591]). The protein was produced from HEK293T cells transfected with KAT5 cDNA clone (Cat# RC210591) using MegaTran 2.0 (Cat# [TT210002]).