

## Product datasheet for **RC210588**

### CKLF (NM\_181640) Human Tagged ORF Clone

#### Product data:

**Product Type:** Expression Plasmids  
**Product Name:** CKLF (NM\_181640) Human Tagged ORF Clone  
**Tag:** Myc-DDK  
**Symbol:** CKLF  
**Synonyms:** C32; CKLF1; CKLF2; CKLF3; CKLF4; HSPC224; UCK-1  
**Mammalian Cell Selection:** Neomycin  
**Vector:** pCMV6-Entry (PS100001)  
**E. coli Selection:** Kanamycin (25 ug/mL)  
**ORF Nucleotide Sequence:** >RC210588 ORF sequence  
 Red=Cloning site Blue=ORF Green=Tags(s)

TTTGTAAATACGACTCACTATAGGGCGGCCGGAATTCGTCGACTGGATCCGGTACCGAGGAGATCTGCC  
 GCC**CGATCGC**

ATGGATAACGTGCAGCCGAAAAATAAACATCGCCCTTCTGCTTCAGTGTGAAAGGCCACGTGAAGATGC  
 TGGCGGTGGATATTATCAACTCACTGGTAACAACAGTATTCATGCTCATCGTATCTGTGTTGGCACTGAT  
 ACCAGAAACCACAACATTGACAGTTGGTGGAGGGGTGTTGCACCTGTGACAGCAGTATGCTGTCTTGCC  
 GACGGGGCCCTTATTTACCGAAGCTTCTGTTCAATCCAGCGGTCCTTACCAGAAAAAGCCTGTGCATG  
 AAAAAAAGAAGTTTGG

**ACGCGT**ACGCGGCCGCTCGAGCAGAACTCATCTCAGAAGAGGATCTGGCAGCAAATGATATCCTGGATT  
 ACAAGGATGACGACGATAAGGTTTAA

**Protein Sequence:** >RC210588 protein sequence  
 Red=Cloning site Green=Tags(s)

MDNVQPKIKHRPFCFSVKGHVKMLRLDIINSLVTVFMLIVSVLALIPETTTLTVGGGVFALVTAVCCCLA  
 DGALIYRKLLFNPSGPYQKKPVHEKKEVL

**TR**TRPLE**QKL**ISEEDLAANDILDYKDDDDKV

**Chromatograms:** [https://cdn.origene.com/chromatograms/mk6368\\_a07.zip](https://cdn.origene.com/chromatograms/mk6368_a07.zip)

**Restriction Sites:** SgfI-MluI



[View online »](#)

**Cloning Scheme:**


**ACCN:** NM\_181640

**ORF Size:** 297 bp

**OTI Disclaimer:** The molecular sequence of this clone aligns with the gene accession number as a point of reference only. However, individual transcript sequences of the same gene can differ through naturally occurring variations (e.g. polymorphisms), each with its own valid existence. This clone is substantially in agreement with the reference, but a complete review of all prevailing variants is recommended prior to use. [More info](#)

**OTI Annotation:** This clone was engineered to express the complete ORF with an expression tag. Expression varies depending on the nature of the gene.

**Components:** The ORF clone is ion-exchange column purified and shipped in a 2D barcoded Matrix tube containing 10ug of transfection-ready, dried plasmid DNA (reconstitute with 100 ul of water).

**Reconstitution Method:**

1. Centrifuge at 5,000xg for 5min.
2. Carefully open the tube and add 100ul of sterile water to dissolve the DNA.
3. Close the tube and incubate for 10 minutes at room temperature.
4. Briefly vortex the tube and then do a quick spin (less than 5000xg) to concentrate the liquid at the bottom.
5. Store the suspended plasmid at -20°C. The DNA is stable for at least one year from date of shipping when stored at -20°C.

**Note:** Plasmids are not sterile. For experiments where strict sterility is required, filtration with 0.22um filter is required.

**RefSeq:** [NM\\_181640.2](#)

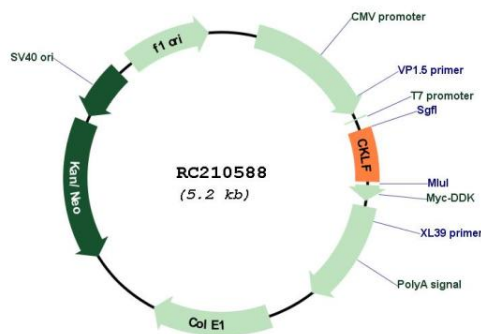
**RefSeq Size:** 729 bp

**RefSeq ORF:** 300 bp

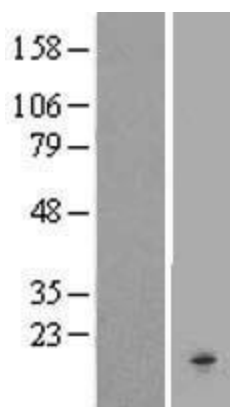
**Locus ID:** 51192  
**UniProt ID:** [Q9UBR5](#)  
**Cytogenetics:** 16q21  
**Protein Families:** Druggable Genome, Secreted Protein, Transmembrane  
**MW:** 10.9 kDa

**Gene Summary:** The product of this gene is a cytokine. Cytokines are small proteins that have an essential role in the immune and inflammatory responses. This gene is one of several chemokine-like factor genes located in a cluster on chromosome 16. The protein encoded by this gene is a potent chemoattractant for neutrophils, monocytes and lymphocytes. It also can stimulate the proliferation of skeletal muscle cells. This protein may play important roles in inflammation and in the regeneration of skeletal muscle. Alternatively spliced transcript variants encoding different isoforms have been identified. Naturally occurring read-through transcription occurs between this locus and the neighboring locus CMTM1 (CKLF-like MARVEL transmembrane domain containing 1).[provided by RefSeq, Feb 2011]

## Product images:



Circular map for RC210588



Western blot validation of overexpression lysate (Cat# [LY405733]) using anti-DDK antibody (Cat# [TA50011-100]). Left: Cell lysates from untransfected HEK293T cells; Right: Cell lysates from HEK293T cells transfected with RC210588 using transfection reagent MegaTran 2.0 (Cat# [TT210002]).