

Product datasheet for RC210587

PLSCR3 (NM_020360) Human Tagged ORF Clone

Product data:

Product Type:	Expression Plasmids
Product Name:	PLSCR3 (NM_020360) Human Tagged ORF Clone
Tag:	Myc-DDK
Symbol:	PLSCR3
Mammalian Cell Selection:	Neomycin
Vector:	pCMV6-Entry (PS100001)
E. coli Selection:	Kanamycin (25 ug/mL)
ORF Nucleotide Sequence:	>RC210587 ORF sequence Red=Cloning site Blue=ORF Green=Tags(s)

TTTTGTAATACGACTCACTATAGGGCGGCCGGAATTCGTCGACTGGATCCGGTACCGAGGAGATCTGCC
GCC**CGATCGCC**

ATGGCAGGCTACTTGCCCCCAAAGGCTACGCCCTTCGCCCCACCTCCCTACCCTGTCACCCCTGGGT
ACCCGGAGCCGGCGCTACATCCTGGGCCCGGCAGGCCAGTGGCCGCCAGGTACCTGCCCCAGCTCC
CGGCTTCGCCCTTCCCTCGCCTGGCCCCGTGGCCTGGGGTCTGCTGCCCTTCTTGCCACTGCCA
GGGGTGCCTTCTGGCCTCGAATTCCTGGTGCAGATTGATCAGATTTTGATTACCAGAAGGCTGAGCGG
TGAAACGTTCTAGGCTGGGAGACCTGTAATCGGTATGAACTGCGCTCTGGGGCCGGCAGCCCCG
TCAGGCGCCGAGGAGAGCAACTGCTGCGCCCGTCTGTGCTGTGGCGCCCGCCGGCCGCTGCGTGTCCGC
CTGGCCGACCCCGGGACCGTGAGGTGCTGCGTTTGTCCGCCCGCTGCACTGTGGCTGCAGCTGTGCC
CCTGTGGCCTCCAGGAGATGGAAGTACAGGCTCCACCAGGCACCACATTGGCCACGTGCTACAGACCTG
GCATCCCTTCTCCCAAGTTCTCCATCCAGGATGCCGATCGCCAGACAGTCTTGCGAGTGGTGGGGCC
TGCTGGACCTGTGGCTGTGGCACAGACACCAACTTTGAGGTGAAGACTCGGGATGAATCCCGCAGTGTGG
GCCGCATCAGCAAGCAGTGGGGGGCCTGGTCCGAGAAGCCCTCACAGATGCAGATGACTTTGGCCTACA
GTTCCCGCTGGACCTGGATGTGAGGGTGAAGGCTGTGCTGCTGGGAGCCACATTCCTCATTGACTACATG
TTCTTTGAGAAGCGAGGAGGCGCTGGGCCCTCTGCCGTACCAGT

ACGCGTACGCGGCCGCTCGAGCAGAAACTCATCTCAGAAGAGGATCTGGCAGCAAATGATATCCTGGATT
ACAAGGATGACGACGATAAGGTTTAA



[View online »](#)

Protein Sequence: >RC210587 protein sequence
Red=Cloning site Green=Tags(s)

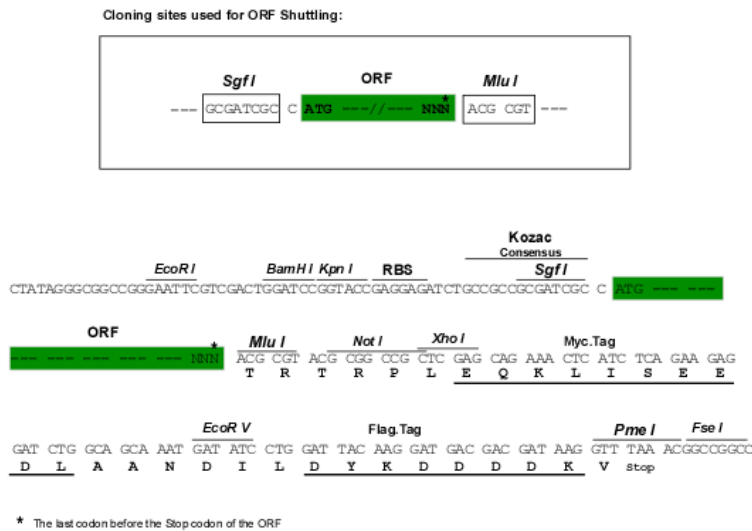
MAGYLPPKGYAPSPPPYPVTPGYPEPALHPGPGQAPVPAQVPAPAPGFALFPSPGPVALGSAAPFLPLP
 GVPSGLEFLVQIDQILIHQKAERVETFLGWETCNRYELRSGAGQPLGQAAEESNCCARLCCGARRPLRVR
 LADPGDREVLRLRLPHCGCSCCPCGLQEMEVQAPPGTTIGHVLQTWHPFLPKFSIQADRQTVLRVVG
 CWTCCGCGTDTNFEVKTRDESRSVGRISKQWGLVREALTDADDFGLQFPLDLDRVVKAVLLGATFLIDYM
 FFEKRGGAGPSAVTS

TRTRPLEQKLISEEDLAANDILDYKDDDDKV

Chromatograms: https://cdn.origene.com/chromatograms/mk6721_e10.zip

Restriction Sites: SgfI-MluI

Cloning Scheme:



ACCN: NM_020360

ORF Size: 885 bp

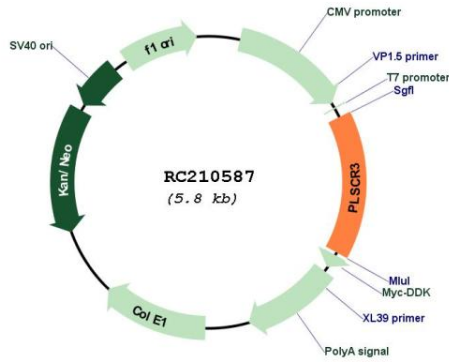
OTI Disclaimer: The molecular sequence of this clone aligns with the gene accession number as a point of reference only. However, individual transcript sequences of the same gene can differ through naturally occurring variations (e.g. polymorphisms), each with its own valid existence. This clone is substantially in agreement with the reference, but a complete review of all prevailing variants is recommended prior to use. [More info](#)

OTI Annotation: This clone was engineered to express the complete ORF with an expression tag. Expression varies depending on the nature of the gene.

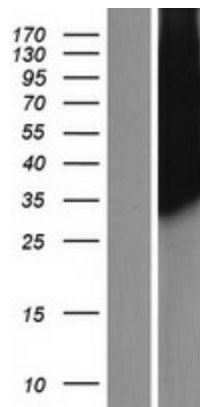
Components: The ORF clone is ion-exchange column purified and shipped in a 2D barcoded Matrix tube containing 10ug of transfection-ready, dried plasmid DNA (reconstitute with 100 ul of water).

Reconstitution Method:	<ol style="list-style-type: none">1. Centrifuge at 5,000xg for 5min.2. Carefully open the tube and add 100ul of sterile water to dissolve the DNA.3. Close the tube and incubate for 10 minutes at room temperature.4. Briefly vortex the tube and then do a quick spin (less than 5000xg) to concentrate the liquid at the bottom.5. Store the suspended plasmid at -20°C. The DNA is stable for at least one year from date of shipping when stored at -20°C.
Note:	Plasmids are not sterile. For experiments where strict sterility is required, filtration with 0.22um filter is required.
RefSeq:	NM_020360.4
RefSeq Size:	2089 bp
RefSeq ORF:	888 bp
Locus ID:	57048
UniProt ID:	Q9NRY6
Cytogenetics:	17p13.1
Domains:	Scramblase
MW:	31.6 kDa
Gene Summary:	May mediate accelerated ATP-independent bidirectional transbilayer migration of phospholipids upon binding calcium ions that results in a loss of phospholipid asymmetry in the plasma membrane. May play a central role in the initiation of fibrin clot formation, in the activation of mast cells and in the recognition of apoptotic and injured cells by the reticuloendothelial system. Seems to play a role in apoptosis, through translocation of cardiolipin from the inner to the outer mitochondrial membrane which promotes BID recruitment and enhances tBid-induced mitochondrial damages.[UniProtKB/Swiss-Prot Function]

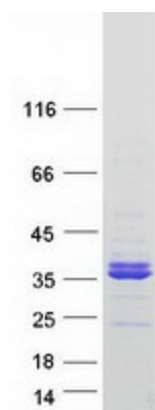
Product images:



Circular map for RC210587



Western blot validation of overexpression lysate (Cat# [LY412530]) using anti-DDK antibody (Cat# [TA50011-100]). Left: Cell lysates from untransfected HEK293T cells; Right: Cell lysates from HEK293T cells transfected with RC210587 using transfection reagent MegaTran 2.0 (Cat# [TT210002]).



Coomassie blue staining of purified PLSCR3 protein (Cat# [TP310587]). The protein was produced from HEK293T cells transfected with PLSCR3 cDNA clone (Cat# RC210587) using MegaTran 2.0 (Cat# [TT210002]).