

## Product datasheet for RC210580

### CHID1 (NM\_023947) Human Tagged ORF Clone

#### Product data:

Product Type:	Expression Plasmids
Product Name:	CHID1 (NM_023947) Human Tagged ORF Clone
Tag:	Myc-DDK
Symbol:	CHID1
Synonyms:	GL008; SI-CLP; SICLP
Mammalian Cell Selection:	Neomycin
Vector:	pCMV6-Entry (PS100001)
E. coli Selection:	Kanamycin (25 ug/mL)
ORF Nucleotide Sequence:	>RC210580 ORF sequence Red=Cloning site Blue=ORF Green=Tags(s)

TTTTGTAATACGACTCACTATAGGGCGGCCGGAATTCGTCGACTGGATCCGGTACCGAGGAGATCTGCC  
GCC**CGATCGCC**

ATGCGGACACTCTTCAACCTCCTCTGGCTTGCCTGGCCTGCAGCCCTGTTCACTACCCTGTCAAAGT  
CAGATGCCAAAAAGCCGCTCAAAGACGCTGCTGGAGAAGAGTCAGTTTTAGATAAGCCGGTGAAGA  
CCGGGGTTTGGTGGTACGGACCTCAAAGCTGAGAGTGTGGTTCTTGAGCATCGCAGCTACTGCTCGCA  
AAGGCCGGGACAGACACTTTGCTGGGGATGTACTGGGCTATGCTACTCCATGGAACAGCCATGGCTACG  
ATGTCACCAAGGTCTTTGGGAGCAAGTTCACACAGATCTCACCCGCTGGCTGCAGCTGAAGAGACGTGG  
CCGTGAGATGTTTGGAGTACGGGCTCCACGAGTGGACCAAGGGTGGATGCGAGCTGCAGGAAGCAT  
GCCAAGGGCTGCACATAGTGCCTCGGCTCCTGTTTGGAGACTGGACTTACGATGATTTCCGGAACGTCT  
TAGACAGTGAGGATGAGATAGAGGAGCTGAGCAAGACCGTGGTCCAGGTGGCAAAGAACCAGATTTTCA  
TGGCTTCTGGTGGAGGTCTGGAACAGCTGCTAAGCCAGAAGCGGTGGGCTCATCCACATGCTCACC  
CACTTGGCCGAGGCTCTGCACAGGCCCGGCTGCTGGCCCTCCTGGTTCATCCGCTGCCATCACCCCG  
GGACCGACAGCTGGGCATGTTACGCACAAGGAGTTTGGAGCTGGCCCCGTGCTGGATGGTTTCAG  
CCTCATGACCTACGACTACTCTACAGCGCATCAGCCTGGCCCTAATGCACCCCTGTCTGGGTTTCGAGCC  
TGCGTCCAGGTCCTGGACCCGAAGTCCAAGTGGCGAAGCAAATCCTCCTGGGGCTCAACTCTATGGTA  
TGGACTACGCGACCTCCAAGGATGCCCGTGGAGCTGTTGTGGGGCCAGGTACATCCAGACACTGAAGGA  
CCACAGGCCCGGATGGTGTGGGACAGCCAGGTCTCAGAGCACTTCTTCGAGTACAGAAGAGCCGAGT  
GGGAGGCACGTCGTTCTACCCAACCCTGAAGTCCCTGCAGGTGCGGCTGGAGCTGGCCCGGAGCTGG  
GCGTTGGGTCTCTATCTGGGAGCTGGGCCAGGGCCTGGACTACTTCTACGACCTGCTC

**ACGCGT**ACGCGGCCGCTCGAGCAGAACTCATCTCAGAAGAGGATCTGGCAGCAAATGATATCCTGGATT  
ACAAGGATGACGACGATAAGGTTTAA



[View online »](#)

**Protein Sequence:** >RC210580 protein sequence  
Red=Cloning site Green=Tags(s)

MRTLFNLLWLALACSPVHTTLSKSDAKKAASKTLLLEKSQFSDKPVQDRGLVVTDLKAESVLEHRSYCSA  
 KARDRHFAGDVLGYVTPWNSHGVDVTKVFGSKFTQISPVWLQLKRRGEMFEVTGLHDVDQGWRAVRKH  
 AKGLHIVPRLLFEDWTYDDFRNVLDSSEDEIEELSKTVVQVAKNQHFDFVVEVWNQLLSQKRVGLIHMLT  
 HLAELHQARLLALLVIPPAITPGTDQLGMFTHKEFEQLAPVLDGFSLMTYDYSTAHQPGPNAPLSWVRA  
 CVQVLDPKSKWRSKILLGLNFYGM DYATSKDAREPVVGARYIQTLKDRPRMVWDSQVSEHFFEYKKSRS  
 GRHVVFYPTLKS LQVRLELARELGVGVSIWELGQGLDYFYDLL

TRTRPLEQKLISEEDLAANDILDYKDDDDKV

**Chromatograms:** [https://cdn.origene.com/chromatograms/mk6002\\_b01.zip](https://cdn.origene.com/chromatograms/mk6002_b01.zip)

**Restriction Sites:** SgfI-MluI

**Cloning Scheme:**



\* The last codon before the Stop codon of the ORF

**ACCN:** NM\_023947

**ORF Size:** 1179 bp

**OTI Disclaimer:** The molecular sequence of this clone aligns with the gene accession number as a point of reference only. However, individual transcript sequences of the same gene can differ through naturally occurring variations (e.g. polymorphisms), each with its own valid existence. This clone is substantially in agreement with the reference, but a complete review of all prevailing variants is recommended prior to use. [More info](#)

**OTI Annotation:** This clone was engineered to express the complete ORF with an expression tag. Expression varies depending on the nature of the gene.

**Components:** The ORF clone is ion-exchange column purified and shipped in a 2D barcoded Matrix tube containing 10ug of transfection-ready, dried plasmid DNA (reconstitute with 100 ul of water).

**Reconstitution Method:**

1. Centrifuge at 5,000xg for 5min.
2. Carefully open the tube and add 100ul of sterile water to dissolve the DNA.
3. Close the tube and incubate for 10 minutes at room temperature.
4. Briefly vortex the tube and then do a quick spin (less than 5000xg) to concentrate the liquid at the bottom.
5. Store the suspended plasmid at -20°C. The DNA is stable for at least one year from date of shipping when stored at -20°C.

**RefSeq:** [NM\\_023947.4](#)

**RefSeq Size:** 3344 bp

**RefSeq ORF:** 1182 bp

**Locus ID:** 66005

**UniProt ID:** [Q9BWS9](#)

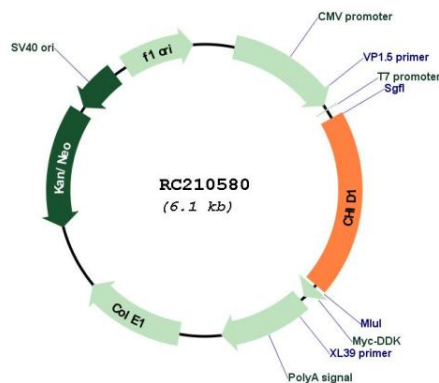
**Cytogenetics:** 11p15.5

**Domains:** Glyco\_18

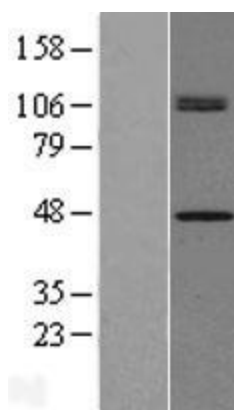
**MW:** 45 kDa

**Gene Summary:** Saccharide- and LPS-binding protein with possible roles in pathogen sensing and endotoxin neutralization. Ligand-binding specificity relates to the length of the oligosaccharides, with preference for chitotetraose (in vitro).[UniProtKB/Swiss-Prot Function]

## Product images:



Circular map for RC210580



Western blot validation of overexpression lysate (Cat# [LY428238]) using anti-DDK antibody (Cat# [TA50011-100]). Left: Cell lysates from untransfected HEK293T cells; Right: Cell lysates from HEK293T cells transfected with [RC227405] using transfection reagent MegaTran 2.0 (Cat# [TT210002]).