

Product datasheet for **RC210574**

ARPP19 (NM_006628) Human Tagged ORF Clone

Product data:

Product Type: Expression Plasmids
Product Name: ARPP19 (NM_006628) Human Tagged ORF Clone
Tag: Myc-DDK
Symbol: ARPP19
Synonyms: ARPP-16; ARPP-19; ARPP16; ENSAL
Mammalian Cell Selection: Neomycin
Vector: pCMV6-Entry (PS100001)
E. coli Selection: Kanamycin (25 ug/mL)
ORF Nucleotide Sequence: >RC210574 ORF sequence
Red=Cloning site Blue=ORF Green=Tags(s)

TTTTGTAATACGACTCACTATAGGGCGGCCGGAATTCGTCGACTGGATCCGGTACCGAGGAGATCTGCC
GCC**CGATCGCC**

ATGCTGCGGAAGTCCCCGAGGCAGCCTCCGCGGAGGAGCAGAAGGAAATGGAAGATAAAGTGACTAGTC
CAGAGAAAGCAGAAGAAGCAAAATTTAAAGCAAGATATCCTCATCTGGGACAAAAGCCTGGAGGTTTCAGA
TTTCTTAAGGAAACGGTTGCAGAAAGGGCAAAAATTTTTGATTCTGGGATTACAACATGGCTAAAGCA
AAAATGAAGAACAAGCAACTTCTACTGCAGCTCCGGATAAGACGGAGGTCCTGGTGACCACATCCCA
CTCCGCAAGACCTTCTCAACGGAAGCCGTCCTTGTGTAGCAAGCTGGCTGGC

ACGCGTACGCGGCCGCTCGAGCAGAAACTCATCTCAGAAGAGGATCTGGCAGCAAATGATATCCTGGATT
ACAAGGATGACGACGATAAGGTTTAA

Protein Sequence: >RC210574 protein sequence
Red=Cloning site Green=Tags(s)
MSAEVPEAASAEQKEMEDKVTSPKAEAKLKARYPHLGQKPGGSDFLRKRLQKQKYFDSGDYDMAKA
KMKNKQLPTAAPDKTEVTGDHIIPTPQDLRQKPSLVASKLAG

TRTRPLEQKLISEEDLAANDILDYKDDDDKV

Chromatograms: https://cdn.origene.com/chromatograms/mk6002_a06.zip

Restriction Sites: SgfI-MluI



[View online »](#)

Cloning Scheme:


ACCN: NM_006628

ORF Size: 336 bp

OTI Disclaimer: The molecular sequence of this clone aligns with the gene accession number as a point of reference only. However, individual transcript sequences of the same gene can differ through naturally occurring variations (e.g. polymorphisms), each with its own valid existence. This clone is substantially in agreement with the reference, but a complete review of all prevailing variants is recommended prior to use. [More info](#)

OTI Annotation: This clone was engineered to express the complete ORF with an expression tag. Expression varies depending on the nature of the gene.

Components: The ORF clone is ion-exchange column purified and shipped in a 2D barcoded Matrix tube containing 10ug of transfection-ready, dried plasmid DNA (reconstitute with 100 ul of water).

- Reconstitution Method:**
1. Centrifuge at 5,000xg for 5min.
 2. Carefully open the tube and add 100ul of sterile water to dissolve the DNA.
 3. Close the tube and incubate for 10 minutes at room temperature.
 4. Briefly vortex the tube and then do a quick spin (less than 5000xg) to concentrate the liquid at the bottom.
 5. Store the suspended plasmid at -20°C. The DNA is stable for at least one year from date of shipping when stored at -20°C.

RefSeq: [NM_006628.6](#)

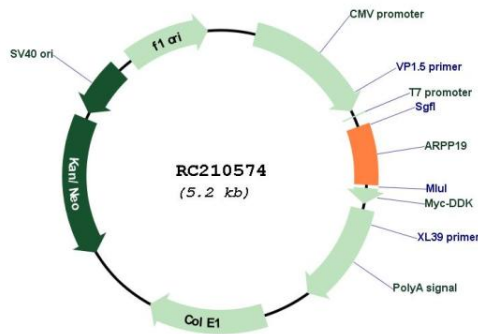
RefSeq Size: 5162 bp

RefSeq ORF: 339 bp

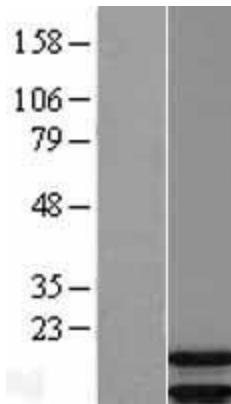
Locus ID: 10776

UniProt ID: [P56211](#)
Cytogenetics: 15q21.2
Domains: endosulfine
Protein Families: Druggable Genome
MW: 12.3 kDa
Gene Summary: The 19-kD cAMP-regulated phosphoprotein plays a role in regulating mitosis by inhibiting protein phosphatase-2A (PP2A; see MIM 176915) (summary by Gharbi-Ayachi et al., 2010 [PubMed 21164014]).[supplied by OMIM, Feb 2011]

Product images:



Circular map for RC210574



Western blot validation of overexpression lysate (Cat# [LY401981]) using anti-DDK antibody (Cat# [TA50011-100]). Left: Cell lysates from untransfected HEK293T cells; Right: Cell lysates from HEK293T cells transfected with RC210574 using transfection reagent MegaTran 2.0 (Cat# [TT210002]).