

Product datasheet for **RC210573**

FKBP2 (NM_004470) Human Tagged ORF Clone

Product data:

Product Type: Expression Plasmids
Product Name: FKBP2 (NM_004470) Human Tagged ORF Clone
Tag: Myc-DDK
Symbol: FKBP2
Synonyms: FKBP-13; FKBP13; PPIase
Mammalian Cell Selection: Neomycin
Vector: pCMV6-Entry (PS100001)
E. coli Selection: Kanamycin (25 ug/mL)
ORF Nucleotide Sequence: >RC210573 ORF sequence
Red=Cloning site Blue=ORF Green=Tags(s)

TTTTGTAATACGACTCACTATAGGGCGGCCGGAATTCGTCGACTGGATCCGGTACCGAGGAGATCTGCC
GCC**CGATCGCC**

ATGAGGCTGAGCTGGTTCAGGTCCTGACAGTACTGTCCATCTGCCTGAGCGCCGTGGCCACGGCCACGG
GGGCCGAGGGCAAAGGAAGCTGCAGATCGGGTCAAGAAGCGGGTGGACCACTGTCCCATAAATCGCG
CAAAGGGGATGTCCTGCACATGCACTACACGGGAAGCTGGAAGATGGGACAGAGTTTGACAGCAGCCTG
CCCCAGAACCAGCCCTTTGTCTTCTCCCTTGGCACAGGCCAGGTCATCAAGGGCTGGGACCAGGGGCTGC
TGGGGATGTGTGAGGGGAAAAGCGCAAGCTGGTATCCCATCCGAGCTAGGGTATGGAGAGCGGGGAGC
TCCCCAAAGATTCCAGGCGGTGCAACCCTGGTGTTCGAGGTGGAGCTGCTCAAATAGAGCGACGAAC
GAGCTG

ACGCGTACGCGGCCGCTCGAGCAGAACTCATCTCAGAAGAGGATCTGGCAGCAAATGATATCCTGGATT
ACAAGGATGACGACGATAAGGTTTAA

Protein Sequence: >RC210573 protein sequence
Red=Cloning site Green=Tags(s)
MRLSWFQVLTVLSICLSAVATATGAEGKRKLQIGVKKRVDHCPKSRKGDVLMHYTGKLEDGTEFDSSL
PQNQPFVFSLGTGQVIKWDQQLGMCEGEKRKLVIPSELGYGERGAPPKIPGGATLVFEVELLKIERR
EL

TRTRPLEQKLISEEDLAANDILDYKDDDDKV

Chromatograms: https://cdn.origene.com/chromatograms/mk6004_d11.zip



[View online »](#)

Restriction Sites: SgfI-MluI

Cloning Scheme:



ACCN: NM_004470

ORF Size: 426 bp

OTI Disclaimer: The molecular sequence of this clone aligns with the gene accession number as a point of reference only. However, individual transcript sequences of the same gene can differ through naturally occurring variations (e.g. polymorphisms), each with its own valid existence. This clone is substantially in agreement with the reference, but a complete review of all prevailing variants is recommended prior to use. [More info](#)

OTI Annotation: This clone was engineered to express the complete ORF with an expression tag. Expression varies depending on the nature of the gene.

Components: The ORF clone is ion-exchange column purified and shipped in a 2D barcoded Matrix tube containing 10ug of transfection-ready, dried plasmid DNA (reconstitute with 100 ul of water).

Reconstitution Method:

1. Centrifuge at 5,000xg for 5min.
2. Carefully open the tube and add 100ul of sterile water to dissolve the DNA.
3. Close the tube and incubate for 10 minutes at room temperature.
4. Briefly vortex the tube and then do a quick spin (less than 5000xg) to concentrate the liquid at the bottom.
5. Store the suspended plasmid at -20°C. The DNA is stable for at least one year from date of shipping when stored at -20°C.

RefSeq: [NM_004470.4](#)

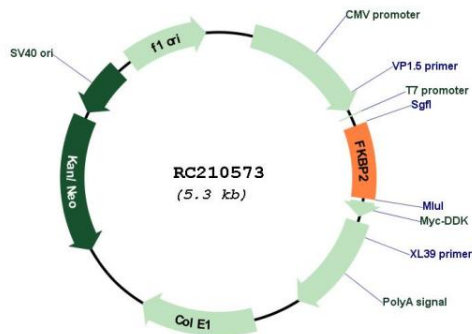
RefSeq Size: 747 bp

RefSeq ORF: 429 bp

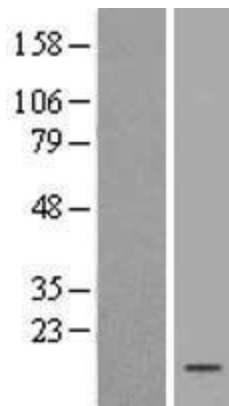
Locus ID: 2286

UniProt ID:	P26885
Cytogenetics:	11q13.1
Domains:	FKBP
Protein Families:	Druggable Genome
MW:	15.6 kDa
Gene Summary:	The protein encoded by this gene is a member of the immunophilin protein family, which play a role in immunoregulation and basic cellular processes involving protein folding and trafficking. This encoded protein is a cis-trans prolyl isomerase that binds the immunosuppressants FK506 and rapamycin. It is thought to function as an ER chaperone and may also act as a component of membrane cytoskeletal scaffolds. Multiple alternatively spliced variants, encoding the same protein, have been identified. [provided by RefSeq, Sep 2008]

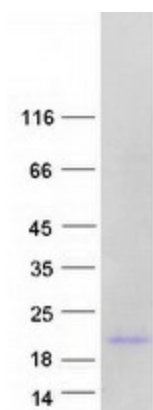
Product images:



Circular map for RC210573



Western blot validation of overexpression lysate (Cat# [LY401423]) using anti-DDK antibody (Cat# [TA50011-100]). Left: Cell lysates from untransfected HEK293T cells; Right: Cell lysates from HEK293T cells transfected with RC210573 using transfection reagent MegaTran 2.0 (Cat# [TT210002]).



Coomassie blue staining of purified FKBP2 protein (Cat# [TP310573]). The protein was produced from HEK293T cells transfected with FKBP2 cDNA clone (Cat# RC210573) using MegaTran 2.0 (Cat# [TT210002]).