

Product datasheet for **RC210571**

PLAT (NM_000930) Human Tagged ORF Clone

Product data:

Product Type:	Expression Plasmids
Product Name:	PLAT (NM_000930) Human Tagged ORF Clone
Tag:	Myc-DDK
Symbol:	PLAT
Synonyms:	T-PA; TPA
Mammalian Cell Selection:	Neomycin
Vector:	pCMV6-Entry (PS100001)
E. coli Selection:	Kanamycin (25 ug/mL)



[View online »](#)

ORF Nucleotide Sequence:

>RC210571 ORF sequence
 Red=Cloning site Blue=ORF Green=Tags(s)

TTTTGTAATACGACTCACTATAGGGCGGCCGGAATTCGTCGACTGGATCCGGTACCGAGGAGATCTGCC
 GCC**CGGATCGCC**

ATGGATGCAATGAAGAGAGGGCTCTGCTGTGTGCTGCTGTGTGGAGCAGTCTTCGTTTCGCCAGCC
 AGGAAATCCATGCCCGATTTCAGAAGAGGAGCCAGATCTTACCAAGTGATCTGCAGAGATGAAAAACGCA
 GATGATATACCAGCAACATCAGTCATGGCTGCGCCCTGTGCTCAGAAGCAACCGGGTGAATATTGCTGG
 TGCAACAGTGGCAGGGCACAGTGCCTCAGTGCCTGTCAAAAGTTGCAGCGAGCCAAGGTGTTTCAACG
 GGGGCACCTGCCAGCAGGCCCTGTACTTCTCAGATTTCTGTGCCAGTGCCTCGAAGGATTTGCTGGGAA
 GTGCTGTGAAATAGATACCAGGGCCACGTGCTACGAGGACCAGGGCATCAGCTACAGGGGCAGTGGAGC
 ACAGCGGAGAGTGGCGCCGAGTGCACCACTGGAACAGCAGCGCTTGGCCAGAAGCCCTACAGCGGGC
 GGAGGCCAGATGCCATCAGGCTGGGCTGGGAACCACAACACTGCAGAAACCCAGATCGAGACTCAA
 GCCCTGGTGTAGTCTTTAAGGCGGGGAAGTACAGCTCAGAGTTCTGCAGCACCCCTGCCTGCTCTGAG
 GAAACAGTGACTGCTACTTTGGGAATGGGTACGCTACCGTGGCAGCAGCCCTACCGAGTCCGGGTG
 CCTCTGCCTCCCGTGAATTCATGATCCTGATAGGCAAGGTTTACACAGCACAGAACCCAGTGCCCA
 GGCCTGGGCTGGGCAACATAATTACTGCCGAATCCTGATGGGGATGCCAAGCCCTGGTGCCACGTG
 CTGAAGAGCCGACAGGCTGACGTGGGAGTACTGTGATGTGCCCTCCTGCTCCACCTGCGGCCTGAGACAGT
 ACAGCCAGCCTCAGTTTCGCATCAAAGGAGGGCTCTTCGCCGACATCGCCTCCCACCCCTGGCAGGCTGC
 CATCTTTGCCAAGCACAGGAGGTGCGCCGAGAGCGGTTCTGTGCGGGGCATACTCATCAGCTCCTGC
 TGGATTCTCTGCCGCCACTGCTTCCAGGAGAGGTTTCCGCCACCACCTGACGGTGTCTTTGGGCA
 GAACATACCGGGTGGTCCCTGGCAGGAGGAGCAGAAATTTGAAGTCGAAAAATACATTGTCCATAAGGA
 ATTCGATGATGACACTTACGACAATGACATTGCGCTGCTGCAGCTGAAATCGGATTCGTCGCCGTGTGCC
 CAGGAGAGCAGCGTGGTCCGCACTGTGTGCCTTCCCCGCGGACCTGCAGCTGCCGGACTGGACGGAGT
 GTGAGCTCTCCGGCTACGGCAAGCATGAGGCTTGTCTCCTTTCTATTCCGAGCGGCTGAAGGAGGCTCA
 TGTGAGACTGTACCCATCCAGCCGCTGCACATCACAACATTTACTTAACAGAACAGTCCCGACAACATG
 CTGTGTGCTGGAGACTCGGAGCGGGGCCCCAGGCAAACCTTGACAGCAGCCTGCCAGGGCGATTCCG
 GAGGCCCTGGTGTGTCTGAACGATGGCCGATGACTTTGGTGGGCATCATCAGCTGGGCTGGGCTG
 TGGACAGAAGGATGTCCGGGTGTACACCAAGGTTACCAACTACCTAGACTGGATTCTGACAACATG
 CGACCG

ACCGGTACGCGGCCGCTCGAGCAGAACTCATCTCAGAAGAGGATCTGGCAGCAAATGATATCCTGGATT
 ACAAGGATGACGACGATAAGGTTTAA

Protein Sequence:

>RC210571 protein sequence
 Red=Cloning site Green=Tags(s)

MDAMKRLCCVLLL CGAVFVSPSQEIHARFRRGARSYQVICRDEKTQMIYQQHQSWLRPVLRSNRVEYCW
 CNSGRAQCHSVPVKSCSEPRCFNGGTCQQALYFSDFCVQCPEGFAGKCCCEIDTRATCYEDQGISYRGTWS
 TAESGAECTNWNSSALAQKPYSGRRPDAIRLGLGNHNYCRNPDSDKPCWYVFKAGKYSSEFCSTPACSE
 GNSDCYFNGSAYRGTHSLTESGASCLPWNSMILIGKVYTAQNPSAQLGLGKHNYCRNPDGDAKPWCHV
 LKSRRLTWEYCDVPSCSTCGLRQYSQPQFRIKGGFLADIASHPWQAAIFAKHRRSPGERFLCGGILISSC
 WILSAAHCFQERFPPHLLTVILGRYRVVPGEEEQKFEVEKYIVHKEFDDDTYDNDIALQLKSDSSRCA
 QESSVVRTVCLPPADLQLPDWTECELSGYGKHEALSPFYSERLKEAHVRLYPSSRCTSQHLLNRTVTDNM
 L CAGDTRSGGPQANLHDACQGDSSGGLVCLNDGRMTLVGII SWGLGCGQKDVPGVYTKVTNYLDWIRDNM
 RP

TRTRPLEQKLISEEDLAANDILDYKDDDDKV

Chromatograms:

https://cdn.origene.com/chromatograms/mk6004_d08.zip

Restriction Sites:

Sgfl-Mlul

Cloning Scheme:



ACCN: NM_000930

ORF Size: 1686 bp

OTI Disclaimer: The molecular sequence of this clone aligns with the gene accession number as a point of reference only. However, individual transcript sequences of the same gene can differ through naturally occurring variations (e.g. polymorphisms), each with its own valid existence. This clone is substantially in agreement with the reference, but a complete review of all prevailing variants is recommended prior to use. [More info](#)

OTI Annotation: This clone was engineered to express the complete ORF with an expression tag. Expression varies depending on the nature of the gene.

Components: The ORF clone is ion-exchange column purified and shipped in a 2D barcoded Matrix tube containing 10ug of transfection-ready, dried plasmid DNA (reconstitute with 100 ul of water).

- Reconstitution Method:
1. Centrifuge at 5,000xg for 5min.
 2. Carefully open the tube and add 100ul of sterile water to dissolve the DNA.
 3. Close the tube and incubate for 10 minutes at room temperature.
 4. Briefly vortex the tube and then do a quick spin (less than 5000xg) to concentrate the liquid at the bottom.
 5. Store the suspended plasmid at -20°C. The DNA is stable for at least one year from date of shipping when stored at -20°C.

RefSeq: [NM_000930.5](#)

RefSeq Size: 3173 bp

RefSeq ORF: 1689 bp

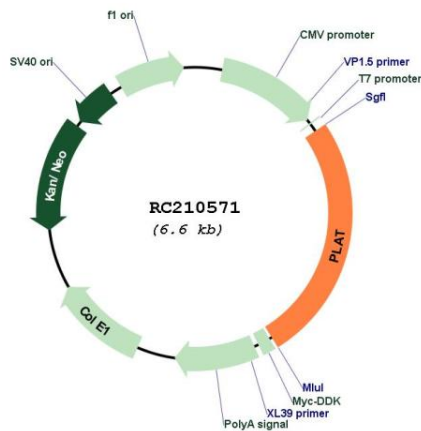
Locus ID: 5327

UniProt ID: [P00750](#)

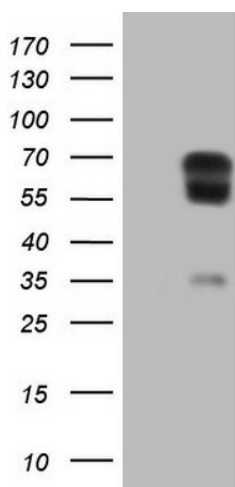
Cytogenetics: 8p11.21

Domains:	KR, FN1, Tryp_SPC, EGF
Protein Families:	Druggable Genome, Protease, Secreted Protein
Protein Pathways:	Complement and coagulation cascades
MW:	62.9 kDa
Gene Summary:	This gene encodes tissue-type plasminogen activator, a secreted serine protease that converts the proenzyme plasminogen to plasmin, a fibrinolytic enzyme. The encoded preproprotein is proteolytically processed by plasmin or trypsin to generate heavy and light chains. These chains associate via disulfide linkages to form the heterodimeric enzyme. This enzyme plays a role in cell migration and tissue remodeling. Increased enzymatic activity causes hyperfibrinolysis, which manifests as excessive bleeding, while decreased activity leads to hypofibrinolysis, which can result in thrombosis or embolism. Alternative splicing of this gene results in multiple transcript variants, at least one of which encodes an isoform that is proteolytically processed. [provided by RefSeq, Jan 2016]

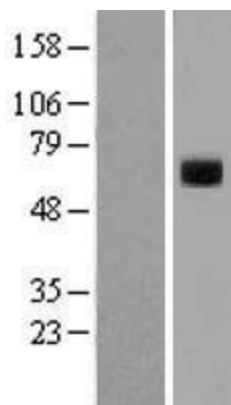
Product images:



Circular map for RC210571



HEK293T cells were transfected with the pCMV6-ENTRY control (Cat# [PS100001], Left lane) or pCMV6-ENTRY PLAT (Cat# RC210571, Right lane) cDNA for 48 hrs and lysed. Equivalent amounts of cell lysates (5 ug per lane) were separated by SDS-PAGE and immunoblotted with anti-PLAT (Cat# [TA805448]). Positive lysates [LY400338] (100ug) and [LC400338] (20ug) can be purchased separately from OriGene.



Western blot validation of overexpression lysate (Cat# [LY400338]) using anti-DDK antibody (Cat# [TA50011-100]). Left: Cell lysates from untransfected HEK293T cells; Right: Cell lysates from HEK293T cells transfected with RC210571 using transfection reagent MegaTran 2.0 (Cat# [TT210002]).