

Product datasheet for RC210567

DNAJC15 (NM_013238) Human Tagged ORF Clone

Product data:

Product Type: Expression Plasmids

Tag: Myc-DDK

Symbol: DNAJC15

Synonyms: DNAJD1; HSD18; MCJ

Mammalian Cell Selection: Neomycin

Vector: pCMV6-Entry (PS100001)

E. coli Selection: Kanamycin (25 ug/mL)

ORF Nucleotide Sequence: >RC210567 ORF sequence
 Red=Cloning site Blue=ORF Green=Tags(s)

TTTTGTAAACGACTCACTATAGGGCGCCGGAATTCGTCGACTGGATCCGGTACCGAGGAGATCTGCC
 GCC**CGATCGCC**

ATGGCTGCCCGTGGTGTCATCGCTCCAGTTGGCGAGAGTTTGGCTACGCTGAGTACTTGACGCCCTCGG
 CCAAACGGCCAGACGCCGACGTCGACAGCAGAGACTGGTAAGAAGTTTGATAGCTGTAGGCCTGGGTGT
 TGCAGCTCTTGCATTTGCAGGTGCGTACGCATTTCCGATCTGGAACCTCTAGAACAAAGTTATCACAGAA
 ACTGCAAAGAAGATTTCAACTCTAGCTTTTCATCCTACTATAAAGGAGGATTTGAACAGAAAATGAGTA
 GGCGAGAAGCTGGTCTTATTTAGGTGTAAGCCCATCTGCTGGCAAGGCTAAGATTAGAACAGCTCATAG
 GAGAGTCATGATTTTGAATCACCCAGATAAAGGTGGATCTCCTTACGTAGCAGCCAAAATAATGAAGCA
 AAAGACTTGCTAGAAACAACCACCAAACAT

ACGCGTACGCGGCCGCTCGAGCAGAACTCATCTCAGAAGAGGATCTGGCAGCAAATGATATCCTGGATT
 ACAAGGATGACGACGATAAGGTTTAA

Protein Sequence: >RC210567 protein sequence
 Red=Cloning site Green=Tags(s)

MAARGVIAPVGESLRYAEYLQPSAKRPDADVDQQLVRSLIAVGLGVAALAFAGRYAFRIWKPLEQVITE
 TAKKISTPSFSSYYKGGFEQKMSRREAGLILGVSPSAGAKIRTAHRRVMILNHPDKGSPYVAAKINEA
 KDLETTTKH

TRTRPLEQKLISEEDLAANDILDYKDDDDKV

Chromatograms: https://cdn.origene.com/chromatograms/mk6002_a09.zip

Restriction Sites: SgfI-MluI



[View online »](#)

Cloning Scheme:



ACCN: NM_013238

ORF Size: 450 bp

OTI Disclaimer: The molecular sequence of this clone aligns with the gene accession number as a point of reference only. However, individual transcript sequences of the same gene can differ through naturally occurring variations (e.g. polymorphisms), each with its own valid existence. This clone is substantially in agreement with the reference, but a complete review of all prevailing variants is recommended prior to use. [More info](#)

OTI Annotation: This clone was engineered to express the complete ORF with an expression tag. Expression varies depending on the nature of the gene.

Components: The ORF clone is ion-exchange column purified and shipped in a 2D barcoded Matrix tube containing 10ug of transfection-ready, dried plasmid DNA (reconstitute with 100 ul of water).

Reconstitution Method:

1. Centrifuge at 5,000xg for 5min.
2. Carefully open the tube and add 100ul of sterile water to dissolve the DNA.
3. Close the tube and incubate for 10 minutes at room temperature.
4. Briefly vortex the tube and then do a quick spin (less than 5000xg) to concentrate the liquid at the bottom.
5. Store the suspended plasmid at -20°C. The DNA is stable for at least one year from date of shipping when stored at -20°C.

Note: Plasmids are not sterile. For experiments where strict sterility is required, filtration with 0.22um filter is required.

RefSeq: [NM_013238.3](#)

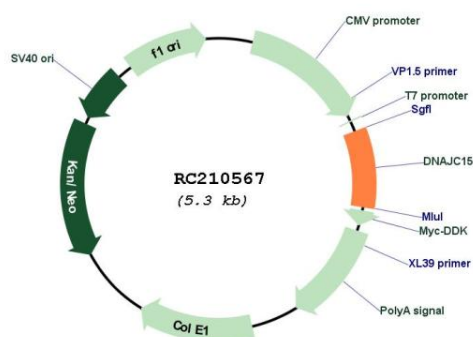
RefSeq Size: 2792 bp

RefSeq ORF: 453 bp

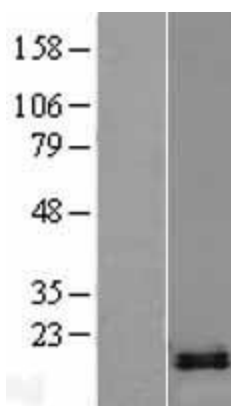
Locus ID: 29103

UniProt ID:	<u>Q9Y5T4</u>
Cytogenetics:	13q14.11
Domains:	DnaJ
Protein Families:	Transmembrane
MW:	16.4 kDa
Gene Summary:	Negative regulator of the mitochondrial respiratory chain. Prevents mitochondrial hyperpolarization state and restricts mitochondrial generation of ATP (By similarity). Acts as an import component of the TIM23 translocase complex. Stimulates the ATPase activity of HSPA9.[UniProtKB/Swiss-Prot Function]

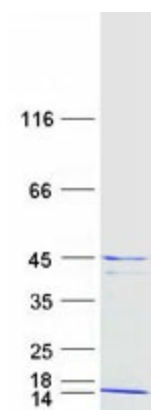
Product images:



Circular map for RC210567



Western blot validation of overexpression lysate (Cat# [LY402228]) using anti-DDK antibody (Cat# [TA50011-100]). Left: Cell lysates from untransfected HEK293T cells; Right: Cell lysates from HEK293T cells transfected with RC210567 using transfection reagent MegaTran 2.0 (Cat# [TT210002]).



Coomassie blue staining of purified DNAJC15 protein (Cat# [TP310567]). The protein was produced from HEK293T cells transfected with DNAJC15 cDNA clone (Cat# RC210567) using MegaTran 2.0 (Cat# [TT210002]).