

Product datasheet for **RC210565**

KLF10 (NM_005655) Human Tagged ORF Clone

Product data:

Product Type:	Expression Plasmids
Product Name:	KLF10 (NM_005655) Human Tagged ORF Clone
Tag:	Myc-DDK
Symbol:	KLF10
Synonyms:	EGR-alpha; EGRA; TIEG; TIEG1
Mammalian Cell Selection:	Neomycin
Vector:	pCMV6-Entry (PS100001)
E. coli Selection:	Kanamycin (25 ug/mL)



[View online »](#)

ORF Nucleotide Sequence:

>RC210565 ORF sequence
 Red=Cloning site Blue=ORF Green=Tags(s)

TTTTGTAATACGACTCACTATAGGGCGGCCGGAATTCGTCGACTGGATCCGGTACCGAGGAGATCTGCC
 GCC**GCGATCGCC**

ATGCTCAACTTCGGTGCCTCTCTCCAGCAGACTGCGGAGGAAAGAATGGAATGATTTCTGAAAGGCCAA
 AAGAGAGTATGTATTCTGGAACAAAAGCTGCAGAGAAAAGTGATTTTGAAGCTGTAGAAGCACTTATGTC
 AATGAGCTGCAGTTGGAAGTCTGATTTTAAAGAAATACGTTGAAAACAGACCTGTTACACCAAGTATCTGAT
 TTGTCAGAGGAAGAGAATCTGCTTCCGGGAACACCTGATTTTCATAACAATCCCAGCATTTTGTGACTC
 CACCTTACAGTCTTCTGACTTTGAACCCTCTCAAGTGTCAAATCTGATGGCACCAGCGCCATCTACTGT
 ACACCTCAAGTCACTCTCAGATACTGCCAAACCTCACATTGCCGCACCTTTCAAAGAGGAAGAAAAGAGC
 CCAGTATCTGCCCAAACCTCCCAAAGCTCAGGCAACAAGTGTGATTGTCATACAGCTGATGCCCAGC
 TATGTAACCACCAGACCTGCCCAATGAAAGCAGCCAGCATCCTCAACTATCAGAACAATCTTTTAGAAG
 AAGAACCACCTAAATGTTGAGGCTGCAAGAAAGAACATACCATGTGCCGCTGTGTACCAAACAGATCC
 AAATGTGAGAGAAACACAGTGGCAGATGTTGATGAGAAAGCAAGTGTGACTTTATGACTTTTCTGTGC
 CTTCTCAGAGACGGTCACTCTGCAGGTCTCAGCCAGCCCCTGTGTCCCCACAACAGAAGTCAAGTGTGGT
 CTCTCCACCTGCAGTATCTGCAGGGGAGTGCCACCTATGCCGGTCACTGTCAGATGGTCCCCTTCT
 GCCAACAAACCCTGTTGTGACAACAGTCTTCCAGCACTCCTCCAGCCAGCCACCAGCCGTTTGCCTCC
 CTGTTGTGTTTCAATGGGCACACAAGTCCCAAAGGCGCTGTGATTTTGGTACCCAGCCCGTTGTGCA
 GAGTTCAAAGCCTCCGGTGGTGAAGGCGAATGGCACCAGACTCTCCCATTGCCCTGCTCCTGGGTTT
 TCCCTTCCAGCAGCAAAGTCACTCCTCAGATTGATTCATCAAGGATAAGGAGTCACTGTAGCCACC
 CAGGATGTGGCAAGACATACTTTAAAAGTCCCATCTGAAGGCCACACGAGGACACACAGAGAAAA
 GCCTTTCAGTGTAGCTGGAAGGTTGTGAAAGGAGTTTGCCTTCTGATGAACGTGCCAGACACAGG
 CGAACCCACACGGGTGAGAAGAAATTTGCGTGCCCATGTGTGACCGGCGGTTTATGAGGAGTGACCATT
 TGACCAAGCATGCCCGCGCCATCTATCAGCCAAGAAGCTACCAAACCTGGCAGATGGAAGTGAAGCAAGT
 AAATGACATTGCTCTACCTCCAACCCCTGCTCCACACAG

ACGCGTACGCGGCCGCTCGAGCAGAAACTCATCTCAGAAGAGGATCTGGCAGCAAATGATATCTGGATT
 ACAAGGATGACGACGATAAGGTTTAA

Protein Sequence:

>RC210565 protein sequence
 Red=Cloning site Green=Tags(s)

MLNFGASLQQTAEERMEMISERPKE SMYSWNKTAEKSDFEAVEALMSMSCSWSKDFKKYVENRPVTPVSD
 LSEENLLPGTPDFHTIPAFCLTPPYSPDFEPSQVSNLMAPAPSTVHFKSLSDTAKPHIAAPFKEEEKS
 PVSAPKLPKAQATSVIRHTADAQLCNHQTCPMKAASILNYQNNFRRRRHLNVEAARKNIPCAAVSPNRS
 KцерNTVADVDEKASAALYDFSVPSSETVICRSQPAPVSPQKSVLVSPPAVSAGGVPPMPVICQMPLP
 ANNPVVTTVVPSTPPSPPAVCPVVFMTQVPKGAVMFVVPQPVVQSSKPPVSPNGTRLSP IAPAPGF
 SPSAAKVTPQIDSSRIRSHICSHPGCGKTYFKSSHLKAHTRHTGKPFSCSWKGCERRFARSDEL SRHR
 RHTHGEKKFACPMCDRRFMRS DHLTKHARRHLSAKKLPNWQMEVSKLNDIALPPTPAPTQ

TRTRPLEQKLI SEEDLAANDILDYKDDDDKV

Chromatograms:

https://cdn.origene.com/chromatograms/mk6244_d10.zip

Restriction Sites:

Sgfl-Mlul

Cloning Scheme:

ACCN: NM_005655

ORF Size: 1440 bp

OTI Disclaimer: Due to the inherent nature of this plasmid, standard methods to replicate additional amounts of DNA in E. coli are highly likely to result in mutations and/or rearrangements. Therefore, OriGene does not guarantee the capability to replicate this plasmid DNA. Additional amounts of DNA can be purchased from OriGene with batch-specific, full-sequence verification at a reduced cost. Please contact our customer care team at custsupport@origene.com or by calling 301.340.3188 option 3 for pricing and delivery.

The molecular sequence of this clone aligns with the gene accession number as a point of reference only. However, individual transcript sequences of the same gene can differ through naturally occurring variations (e.g. polymorphisms), each with its own valid existence. This clone is substantially in agreement with the reference, but a complete review of all prevailing variants is recommended prior to use. [More info](#)

OTI Annotation: This clone was engineered to express the complete ORF with an expression tag. Expression varies depending on the nature of the gene.

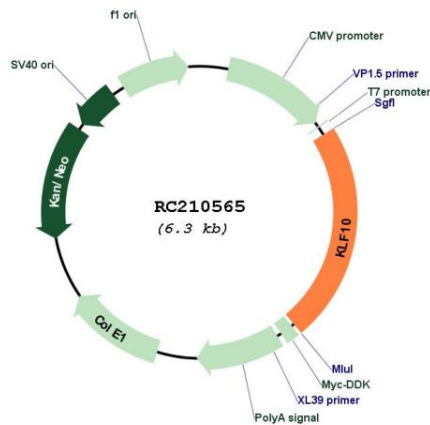
Components: The ORF clone is ion-exchange column purified and shipped in a 2D barcoded Matrix tube containing 10ug of transfection-ready, dried plasmid DNA (reconstitute with 100 ul of water).

- Reconstitution Method:**
1. Centrifuge at 5,000xg for 5min.
 2. Carefully open the tube and add 100ul of sterile water to dissolve the DNA.
 3. Close the tube and incubate for 10 minutes at room temperature.
 4. Briefly vortex the tube and then do a quick spin (less than 5000xg) to concentrate the liquid at the bottom.
 5. Store the suspended plasmid at -20°C. The DNA is stable for at least one year from date of shipping when stored at -20°C.

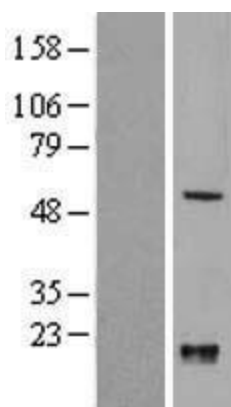
RefSeq: [NM_005655.4](#)
RefSeq Size: 3115 bp
RefSeq ORF: 1443 bp
Locus ID: 7071
UniProt ID: [Q13118](#)
Cytogenetics: 8q22.3
Domains: zf-C2H2
Protein Families: Druggable Genome, Transcription Factors
MW: 52.6 kDa

Gene Summary: This gene encodes a member of a family of proteins that feature C2H2-type zinc finger domains. The encoded protein is a transcriptional repressor that acts as an effector of transforming growth factor beta signaling. Activity of this protein may inhibit the growth of cancers, particularly pancreatic cancer. Alternative splicing results in multiple transcript variants. [provided by RefSeq, Jun 2013]

Product images:



Circular map for RC210565



Western blot validation of overexpression lysate (Cat# [LY417158]) using anti-DDK antibody (Cat# [TA50011-100]). Left: Cell lysates from untransfected HEK293T cells; Right: Cell lysates from HEK293T cells transfected with RC210565 using transfection reagent MegaTran 2.0 (Cat# [TT210002]).