

## Product datasheet for **RC210541**

### HIC2 (NM\_015094) Human Tagged ORF Clone

#### Product data:

Product Type:	Expression Plasmids
Product Name:	HIC2 (NM_015094) Human Tagged ORF Clone
Tag:	Myc-DDK
Symbol:	HIC2
Synonyms:	HRG22; ZBTB30; ZNF907
Mammalian Cell Selection:	Neomycin
Vector:	pCMV6-Entry (PS100001)
E. coli Selection:	Kanamycin (25 ug/mL)



[View online »](#)

**ORF Nucleotide Sequence:**

>RC210541 representing NM\_015094  
 Red=Cloning site Blue=ORF Green=Tags(s)

TTTTGTAATACGACTCACTATAGGGCGGCCGGAATTCGTCGACTGGATCCGGTACCGAGGAGATCTGCC  
 GCC**CGCATCGCC**

ATGGTGTCTGGCCCTTGGCACTCCGGTGGTGCCTGGCGAGGGCGGGGACATGGGGCCGACATGG  
 AGCTGCCAGCCACTCGAAGCAGCTCCTGCTGCAGCTGAACCAGCAGAGGACCAAGGGCTTCTGTGTGA  
 CGTCATCATCATGGTGGAGAAGTCCATCTTCCGGGCCACAAGAAGCTCCTAGCCGCCAGCAGCATCTAT  
 TTCAAGTCCCTGGTCTGCACGACAACCTCATCAACCTGGACACAGACATGGTCAGCTCCACAGTGTTC  
 AGCAGATCTTGGACTTCTACACAGGCAAGTGTGCCAGCGACCAGCCAGCCGAGCCCAACTTCAG  
 CACCTCCTCACTGCCGCCAGCTACCTCCAGCTGCCGAGTTGGCAGCCCTCTGCCGCCGAACTCAAG  
 CGAGCCGCAAGCCCTTGGCTCTGGGAGGGCGGGTCCACTGGCATGGGGCGGCCCCCGCAGCCAGC  
 GGCTGTCCACGGCTCTGTATCAAGCTCGGTATCAGGGCTCGTGGATGGGCGCAAGGGGGCCACGC  
 CCCCAGGAGCTCCCCAAGCCAAAGGCTCAGACGATGAAGTCTTCTTGGTGGCTTAACCAGGATAGC  
 GTCAAGGTCTGGGCCGGCTGTCTGCCAGCTGGCGGGAGGGGGTCTGGGGGGCTGCAGCAGCAGCA  
 CCAACGGGAGCAGCGGGGCTGCAGCAGGAGCTGGGCTTGGACCTGTCCAAGAAAAGCCACCCCTTGC  
 CCCTGCCACCCAGGTCACCTCACTCCCGATGACGCAGCCAGCTGAGCGACAGCCAACATGGCTCG  
 CCCCTGCGGCCTCTGCCCTCCCGTTGCCAACAGTGCCTCTTATTCTGAGCTGGGGGACCCCTGATG  
 AGCCATGGATCTGGAGGGGGCCGAGGACAACCACTGAGCCTGCTGGAGGCGCTGGTGGGCAGCCTCG  
 GAAGAGCTCCGGCACTCACTCGGAAGAAGGAGTGGGGCAAGAAGGAGCCTGTGGCTGGCTCCCTTT  
 GAGCGGAGAGAAGCAGGGCCCAAGGTCCCTGCCGGGAGAGGAGGTGAGGGGGTGGGGACAGGGTTC  
 CCAATGGCATCTGGCTAGTGGGCTGGCCCTAGCGGGCCCTATGGGAGCCCTACCCCTGCAAGGA  
 GGAGGAGAGAACGGCAAGGATGCAAGTGAAGACAGTGCAGAGCGGGAGCGAGGGGGGAGCGGCCAC  
 GCCAGCGCCACTACATGTACCGCAGGAGGGCTACGAGACGGTGTCTACGGGACAACCTGTATGTGT  
 GCATTCCTGCGCAAGGGCTTCCCGAGCTCTGAGCAGCTCAATGCGCACGTGGAGACTCACACGGAGGA  
 AGAGCTGTTTCAAGGAAGAGGGGGCTACGAGACAGGAGTGGGGTCCGAGGAGGAGGCGGAGGAC  
 CTGTGACACCCAGTGGCCCTACACGGCTGAGCCCCGGCCCTTCAAGTGTTCGGTCTGCGAGAAGCT  
 ACAAGGACCCAGCCAGCTGCGGCAGCAGAGAAGACGCACTGGTGCACGGCCCTTCCCTGCAACAT  
 CTGTGGCAAAATGTTACACAGCGCGCCACCATGACGCGTACATGCGGAGCCACCTGGGCTGAAGCCC  
 TTCGCTGCGATGAGTGTGGCATGCGCTTACCCGTCAGTACCGCTCACGGAGCACATGCGTGTGCACT  
 CGGGCGAGAAACCTTACGAGTGCAGCTGTGCGGGGCAAGTTCACCCAGCAGCGCAACCTCATAGCCA  
 CCTGCGCATGCACACCTCCCTCC

AG**CGGACCG**ACGCGTACGCGGCCGCTCGAGCAGAACTCATCTCAGAAGAGGATCTGGCAGCAAATGATATCC  
 TGGATTACAAGGATGACGACGATAAGGTTAA

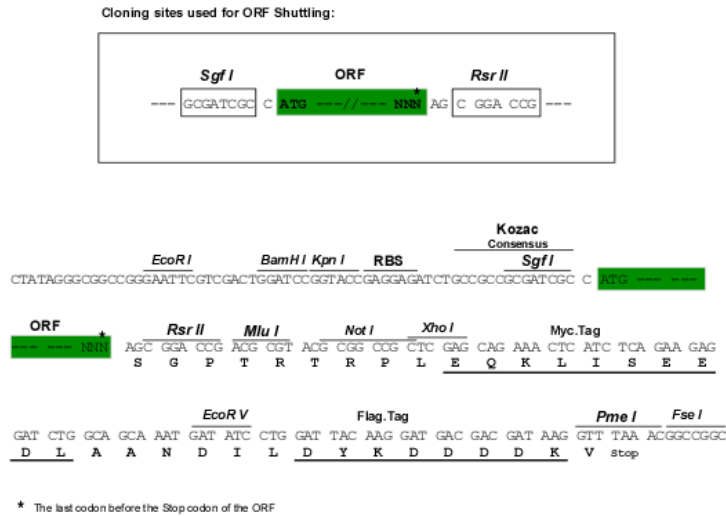
**Protein Sequence:**

>RC210541 representing NM\_015094  
 Red=Cloning site Green=Tags(s)

MVSGPLALRWCAWAGRGDMGPDMEPMSHKLQLLQLNQQRKGFLCDVIIMVENSIFRAHKNVLAASSIY  
 FKSLVLHDNLINLDTMVSSTVFQQILDFIYTGKLLPSDQPAEPNFSTLLTAASYLQLPELAALCRRRLK  
 RAGKPFSGRAGSTGMGRPPRSQRLSTASVIQARYQGLVDGRKGAHAPQELPQAKGSDELFLGGSNQDS  
 VQGLGRAVCPAGGEAGLGGCSSSTNGSSGGCEQLGLDLSKSPPLPPATPGPHLTPDDAAQLSDSQHGS  
 PPAASAPPVANSASYSELGGTPDEPMDLEGAEDNHL SLL EAPGGQPRKSLRHSTRKKEWGKKEPVAGSPF  
 ERREAGPKGPCGEEGEGVGDVPNGILASGAGPSGPYPPEPCKEENGKDA SEDSAQSGSEGGSGH  
 ASAHMYRQEGYETVSYGDNLYVCIPCAKGFPSSEQLNAHVETHTHEELFIKEEGAYETGSGGAEAEAD  
 LSAPSAAYTAEPKFKSVCEKTYKDPATLRQHEKTHWLTRPFCNICGMFTQRGTMTRHMRSHLGLPK  
 FACDECGMRFTRQYRLTEHMRVHSGEKPYECQLCGGKFTQQRNLSHLRMHTSPS

**SGP**TRRRLEQKLI SEEDLAANDILDYKDDDDK

**Chromatograms:** [https://cdn.origene.com/chromatograms/mg2941\\_e09.zip](https://cdn.origene.com/chromatograms/mg2941_e09.zip)  
**Restriction Sites:** SgfI-RsrII  
**Cloning Scheme:**



**ACCN:** NM\_015094

**ORF Size:** 1845 bp

**OTI Disclaimer:** The molecular sequence of this clone aligns with the gene accession number as a point of reference only. However, individual transcript sequences of the same gene can differ through naturally occurring variations (e.g. polymorphisms), each with its own valid existence. This clone is substantially in agreement with the reference, but a complete review of all prevailing variants is recommended prior to use. [More info](#)

**OTI Annotation:** This clone was engineered to express the complete ORF with an expression tag. Expression varies depending on the nature of the gene.

**Components:** The ORF clone is ion-exchange column purified and shipped in a 2D barcoded Matrix tube containing 10ug of transfection-ready, dried plasmid DNA (reconstitute with 100 ul of water).

**Reconstitution Method:**

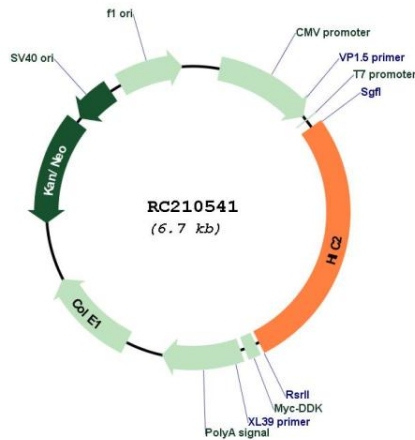
1. Centrifuge at 5,000xg for 5min.
2. Carefully open the tube and add 100ul of sterile water to dissolve the DNA.
3. Close the tube and incubate for 10 minutes at room temperature.
4. Briefly vortex the tube and then do a quick spin (less than 5000xg) to concentrate the liquid at the bottom.
5. Store the suspended plasmid at -20°C. The DNA is stable for at least one year from date of shipping when stored at -20°C.

**RefSeq:** [NM\\_015094.3](#)

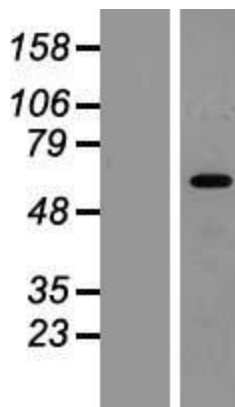
**RefSeq Size:** 6794 bp

**RefSeq ORF:** 1848 bp

**Locus ID:** 23119  
**UniProt ID:** [Q96JB3](#)  
**Cytogenetics:** 22q11.21  
**Protein Families:** Transcription Factors  
**MW:** 66 kDa  
**Gene Summary:** Transcriptional repressor.[UniProtKB/Swiss-Prot Function]

**Product images:**


Circular map for RC210541



Western blot validation of overexpression lysate (Cat# [LY414786]) using anti-DDK antibody (Cat# [TA50011-100]). Left: Cell lysates from untransfected HEK293T cells; Right: Cell lysates from HEK293T cells transfected with RC210541 using transfection reagent MegaTran 2.0 (Cat# [TT210002]).