

Product datasheet for **RC210539**

RBM35A (ESRP1) (NM_001034915) Human Tagged ORF Clone

Product data:

Product Type:	Expression Plasmids
Product Name:	RBM35A (ESRP1) (NM_001034915) Human Tagged ORF Clone
Tag:	Myc-DDK
Symbol:	RBM35A
Synonyms:	DFNB109; RBM35A; RMB35A
Mammalian Cell Selection:	Neomycin
Vector:	pCMV6-Entry (PS100001)
E. coli Selection:	Kanamycin (25 ug/mL)



[View online »](#)

**ORF Nucleotide
Sequence:**

>RC210539 ORF sequence
 Red=Cloning site Blue=ORF Green=Tags(s)

TTTTGTAATACGACTCACTATAGGGCGGCCGGAATTCGTCGACTGGATCCGGTACCGAGGAGATCTGCC
 GCC**CGGATCGCC**

ATGACGGCCTCTCCGATTACTTGGTGGTCTTTTTGGGATCACTGCTGGGGCCACCGGGCCAAGCTAG
 GCTCGGATGAGAAGGAGTTGATCCTGCTGTTCTGGAAAGTCGTGGATCTGGCCAACAAGAAGGTGGGACA
 GTTGACGAAGTCTAGTTAGACCGGATCAGTTGAACTGACGGAGGACTGCAAAGAAGAACTAAAATA
 GACGTCGAAAGCCTGTCTCGGGCTCGCAGCTGGACCAAGCCCTCCGACAGTTTAACCAAGTCAGTGAGCA
 ATGAACTGAATATTGGAGTAGGGACTTCCTTCTGTCTGTACTGATGGGAGCTTCATGTCAGGCAAAAT
 CCTGCATCCTGAGGCTTCCAAGAAGAATGTACTATTACCTGAATGCTTCTATTCTTTTTGATCTTCGA
 AAAGAATTCAAGAAATGTTGCCCTGGTTCACCTGATATTGACAACTGGACGTTGCCACAATGACAGAGT
 ATTTAAATTTTGAAGAGTAGTTCAGTCTCTCGATATGGAGCCTCTCAAGTTGAAGATATGGGGAATAT
 AATTTTAGCAATGATTTAGAGCCTTATAATCACAGGTTTTAGATCCAGAGAGAGTGAATTACAAGTTT
 GAAAGTGGAACTTGACAGCAAGATGGAACCTATTGATGATAACACCGTAGTCAGGGCAGGAGTTTACCAT
 GGCAGTCTTCAGATCAAGATATTGCAAGATTCTCAAAGGACTCAATATTGCCAAGGGAGGTGCAGCACT
 TTGTCTGAATGCTCAGGGTCAAGGAACGGAGAAGCTCTGGTTAGGTTTGAAGTGAGGAGCACCGAGAC
 CTAGCACTACAGAGGCACAAACATCACATGGGGACCCGGTATATTGAGGTTTACAAGCAACAGGTGAAG
 ATTTCTTAAAATTGCTGGTGGTACTTCCAATGAGGTAGCCAGTTTCTCTCAAAGGAAAATCAAGTCAT
 TGTCCGCATGCGGGGCTCCCTTACAGGCCACAGCTGAAGAAGTGGTGGCTTCTTTGGACAGCATTGC
 CCTATTACTGGGGAAAGGAAGGCATCCTCTTGTACCTACCCAGATGGTAGGCCAACAGGGGACGCTT
 TTGTCCTCTTGCCTGTGAGGAATATGCACAGAATGCGTTGAGGAAGCATAAAGACTTGTGGGTAAG
 ATACATTGAACCTTTCAGGAGCACAGCAGCTGAAGTTTCAGCAGGTGCTGAATCGATTCTCCTCGGCCCT
 CTCATTCCAATTCCAACCCCTCCATTATTCCAGTACTACCTCAGCAATTTGTGCCCTTACAAATGTTA
 GAGACTGTATACGCCTTCGAGGTCTTCCCTATGCAGCCACAATTGAGGACATCCTGGATTTCTGGGGGA
 GTTCGCCACAGATATTCTACTCATGGGTTTACATGGTTTTGAATCACCAAGGCCGCCATCAGGAGAT
 GCCTTTATCCAGATGAAGTCTGCGGACAGAGCATTATGGCTGCACAGAAGTGCATAAAAAAACATGA
 AGGACAGATATGTTGAAGTCTTTCAGTGTTCAGCTGAGGAGATGAACTTTGTGTTAATGGGGGCACTTT
 AAATCGAAATGGCTTATCCCACCGCCATGCCTGTCTCCTCCTACACATTTCCAGCTCCTGTGCA
 GTTATTCTACAGAAGCTGCCATTTACCAGCCCTCTGTGATTTTGAATCCACGAGCACTGCAGCCCTCCA
 CAGCGTACTACCCAGCAGGCACTCAGCTTTCATGAACTACACAGCGTACTATCCAGCCCCCAGGTTT
 GCCTAATAGTCTTGGCTACTTCCCTACAGCTGCTAATCTTAGCGGTGTCCTCCACAGCCTGGCAGGGT
 GTCAGAATGCAGGGCCTGGCCTACAATACTGGAGTTAAGGAAATCTTAACCTTCTCCAAGGTTACCAGT
 ATGCAACCGAGGATGGACTTATACACACAAATGACCAGGCCAGGACTCTACCCAAAGAAATGGGTTTGTAT
 T

ACGCGTACGCGGGCGCTCGAGCAGAACTCATCTCAGAAGAGGATCTGGCAGCAATGATATCCTGGATT
 ACAAGGATGACGACGATAAGGTTTAA

Protein Sequence: >RC210539 protein sequence
Red=Cloning site Green=Tags(s)

MTASPDYLVVLFGITAGATGAKLGSDEKELILLFWKVVDLANKKVGQLHEVLVRPDQLELTEDCKEETKI
 DVESLSSASQLDQALRQFNQSVSNELNIGVGTSFCLCTDQQLHVRQILHPEASKKNVLLPECFYSFFDLR
 KEFKKCCPGSPDIDKLDVATMTEYLNFEKSSSVSRYGASQVEDMGNIILAMISEPNHRFSDPERVNYKF
 ESGTCSKMEIIDDNTVVRARGLPWQSSDQDIARFFKGLNIAKGGAAALCLNAQGRNGEALVRFVSEEHDR
 LALQRHKKHMGTRYIEVYKATGEDFLKIAAGTSNEVAQFLSKENQVIVRMRGLPFTATAEEVVAFFGQHC
 PITGGKEGILFVTYPDGRPTGDAFVLFACEEYAQNALRKHKDLLGKRYIELFRSTAAEVQQLNRFSSAP
 LIPLPTPPIIPVLPQQFVPPTNVRDCIRLRGLPYAATIEDILDFLGEFATDIRTHGVHMLNHQGRPSGD
 AFIQMSADRAFMAAQKCHKKNMKDRYVEVFQCSAEEMNFVLMGGTLNRNGLSPPPCLSPSYTFPAPAA
 VIPTEAAIYQPSVILNPRALQPSTAYYPAGTQLFMNYTAYYPPSPGSPNSLGYFPPTAANL SGVPPQPGTV
 VRMQGLAYNTGVKEILNFSQGYQYATEDGLIHTNDQARTLPKEWVCI

TRTRPLEQKLISEEDLANDILDYKDDDDKV

Chromatograms: https://cdn.origene.com/chromatograms/mk6546_g11.zip

Restriction Sites: SgfI-MluI

Cloning Scheme:



ACCN: NM_001034915

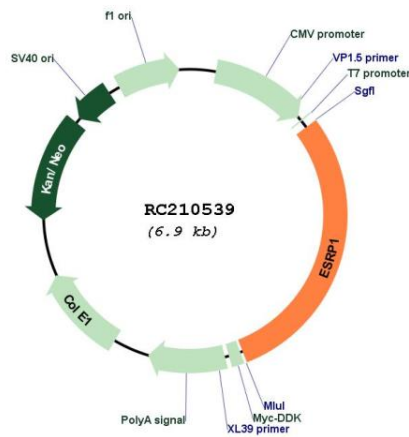
ORF Size: 2031 bp

OTI Disclaimer: The molecular sequence of this clone aligns with the gene accession number as a point of reference only. However, individual transcript sequences of the same gene can differ through naturally occurring variations (e.g. polymorphisms), each with its own valid existence. This clone is substantially in agreement with the reference, but a complete review of all prevailing variants is recommended prior to use. [More info](#)

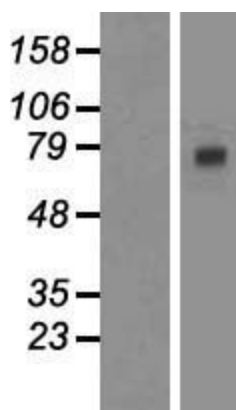
OTI Annotation: This clone was engineered to express the complete ORF with an expression tag. Expression varies depending on the nature of the gene.

Components:	The ORF clone is ion-exchange column purified and shipped in a 2D barcoded Matrix tube containing 10ug of transfection-ready, dried plasmid DNA (reconstitute with 100 ul of water).
Reconstitution Method:	<ol style="list-style-type: none"> 1. Centrifuge at 5,000xg for 5min. 2. Carefully open the tube and add 100ul of sterile water to dissolve the DNA. 3. Close the tube and incubate for 10 minutes at room temperature. 4. Briefly vortex the tube and then do a quick spin (less than 5000xg) to concentrate the liquid at the bottom. 5. Store the suspended plasmid at -20°C. The DNA is stable for at least one year from date of shipping when stored at -20°C.
RefSeq:	<u>NM_001034915.1</u> , <u>NP_001030087.1</u>
RefSeq Size:	3794 bp
RefSeq ORF:	2034 bp
Locus ID:	54845
UniProt ID:	<u>Q6NXG1</u>
Cytogenetics:	8q22.1
MW:	75.1 kDa
Gene Summary:	ESRP1 is an epithelial cell-type-specific splicing regulator (Warzecha et al., 2009 [PubMed 19285943]).[supplied by OMIM, Aug 2009]

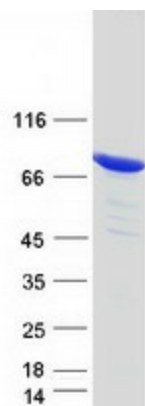
Product images:



Circular map for RC210539



Western blot validation of overexpression lysate (Cat# [LY422113]) using anti-DDK antibody (Cat# [TA50011-100]). Left: Cell lysates from untransfected HEK293T cells; Right: Cell lysates from HEK293T cells transfected with RC210539 using transfection reagent MegaTran 2.0 (Cat# [TT210002]).



Coomassie blue staining of purified ESRP1 protein (Cat# [TP310539]). The protein was produced from HEK293T cells transfected with ESRP1 cDNA clone (Cat# RC210539) using MegaTran 2.0 (Cat# [TT210002]).