

Product datasheet for **RC210536**

OXLD1 (NM_001039842) Human Tagged ORF Clone

Product data:

Product Type: Expression Plasmids
Product Name: OXLD1 (NM_001039842) Human Tagged ORF Clone
Tag: Myc-DDK
Symbol: OXLD1
Synonyms: C17orf90
Mammalian Cell Selection: Neomycin
Vector: pCMV6-Entry (PS100001)
E. coli Selection: Kanamycin (25 ug/mL)
ORF Nucleotide Sequence: >RC210536 ORF sequence
 Red=Cloning site Blue=ORF Green=Tags(s)

TTTTGTAATACGACTCACTATAGGGCGGCCGGAATTCGTCGACTGGATCCGGTACCGAGGAGATCTGCC
 GCC**CGATCGCC**

ATGCTGCTGCGGAGGGTGGTCGAGGGAGGCCGGGCGGTAGCCGCCCGGTCCGTGGCTCGGGGGCTCGCC
 GGTTCAGCCCGACTGCTGCCAGAGGCTTCTGGAGGTGGCAGCTTCTTCAAAGGCACCATCCCGG
 AGCGCAAGCCCTGATGGGCGCAGAAAATTCGGGACAGACCAGTAGAGGTGGGCTCCAAGCAGGTGCG
 GACGGCACCAGGCCGCCAAGGCATCGCTGCCACCTGAGCTCCAGCCGCCACAACTGCTGCATGAGTG
 GCTGCCCAACTGCGTGTGGGTGGAGTACGCGGACAGGCTGCTGCAGCACTTCCAGGACGGTGGGGAGCG
 GGCCCTGGCTGCCCTGGAGGAGCACGTGGCTGATGAGAACCTCAAGGCCTTCTCAGGATGGAGATCCGG
 CTGCACACCAGGTGCGGAGGC

ACGCGTACGCGGCCGCTCGAGCAGAACTCATCTCAGAAGAGGATCTGGCAGCAAATGATATCCTGGATT
 ACAAGGATGACGACGATAAGGTTTAA

Protein Sequence: >RC210536 protein sequence
 Red=Cloning site Green=Tags(s)

MLLRRVVEGGRVAAA VRGSGARRFSSPDCCQRLPGGGSFLQRHHPGAQAPDGRRKFGTDHVEVGSQAGA
 DGTTRPPKASLPPELQPPTNCCMSGCPNCVWVEYADRLQLHFQDGGERALAALEEHVADENLKAFLRMEIR
 LHTRCGG

TRTRPLEQKLISEEDLAANDILDYKDDDDKV

Chromatograms: https://cdn.origene.com/chromatograms/mk6368_e08.zip



[View online >](#)

Restriction Sites: SgfI-MluI

Cloning Scheme:



ACCN: NM_001039842

ORF Size: 441 bp

OTI Disclaimer: The molecular sequence of this clone aligns with the gene accession number as a point of reference only. However, individual transcript sequences of the same gene can differ through naturally occurring variations (e.g. polymorphisms), each with its own valid existence. This clone is substantially in agreement with the reference, but a complete review of all prevailing variants is recommended prior to use. [More info](#)

OTI Annotation: This clone was engineered to express the complete ORF with an expression tag. Expression varies depending on the nature of the gene.

Components: The ORF clone is ion-exchange column purified and shipped in a 2D barcoded Matrix tube containing 10ug of transfection-ready, dried plasmid DNA (reconstitute with 100 ul of water).

Reconstitution Method:

1. Centrifuge at 5,000xg for 5min.
2. Carefully open the tube and add 100ul of sterile water to dissolve the DNA.
3. Close the tube and incubate for 10 minutes at room temperature.
4. Briefly vortex the tube and then do a quick spin (less than 5000xg) to concentrate the liquid at the bottom.
5. Store the suspended plasmid at -20°C. The DNA is stable for at least one year from date of shipping when stored at -20°C.

RefSeq: [NM_001039842.3](#)

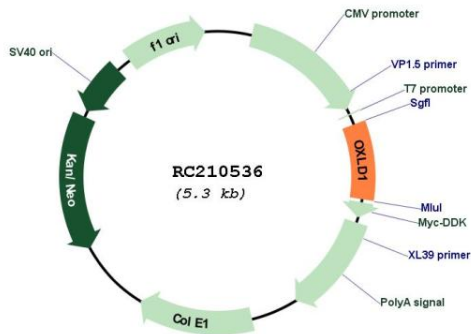
RefSeq Size: 635 bp

RefSeq ORF: 444 bp

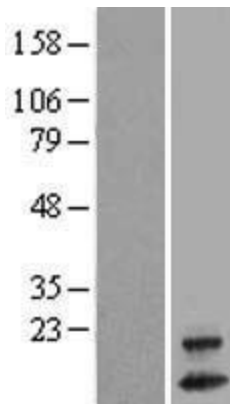
Locus ID: 339229

UniProt ID: [Q5BKU9](#)
 Cytogenetics: 17q25.3
 MW: 15.9 kDa

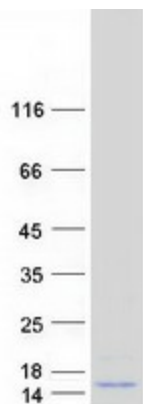
Product images:



Circular map for RC210536



Western blot validation of overexpression lysate (Cat# [LY421836]) using anti-DDK antibody (Cat# [TA50011-100]). Left: Cell lysates from untransfected HEK293T cells; Right: Cell lysates from HEK293T cells transfected with RC210536 using transfection reagent MegaTran 2.0 (Cat# [TT210002]).



Coomassie blue staining of purified OXLD1 protein (Cat# [TP310536]). The protein was produced from HEK293T cells transfected with OXLD1 cDNA clone (Cat# RC210536) using MegaTran 2.0 (Cat# [TT210002]).

