

## Product datasheet for **RC210535**

### SDS3 (SUDS3) (NM\_022491) Human Tagged ORF Clone

#### Product data:

Product Type:	Expression Plasmids
Product Name:	SDS3 (SUDS3) (NM_022491) Human Tagged ORF Clone
Tag:	Myc-DDK
Symbol:	SDS3
Synonyms:	SAP45; SDS3
Mammalian Cell Selection:	Neomycin
Vector:	pCMV6-Entry (PS100001)
E. coli Selection:	Kanamycin (25 ug/mL)
ORF Nucleotide Sequence:	>RC210535 ORF sequence Red=Cloning site Blue=ORF Green=Tags(s)

TTTTGTAATACGACTCACTATAGGGCGGCCGGAATTCGTCGACTGGATCCGGTACCGAGGAGATCTGCC  
GCC**CGGATCGCC**

ATGAGTGCCGCGGGGCTGCTGGCCCCGGCCCCGGCCAGGCTGGAGCGCCCGGCCCGAGTACTACC  
CCGAGGAGGATGAAGAGCTGGAGAGCGCCGAGGACGACGAGCGCAGCTGTCGGGGCCGCGAGTCGGACGA  
AGACACTGAGGATGCTAGTGAACTGACCTGGCAAAGCATGATGAAGAAGACTATGTAGAAATGAAGGAA  
CAGATGTATCAGGACAACTGGCTTCTCTCAAGAGGCAGTTGCAACAACGCAAGAAGGTACATTACAGG  
AATATCAGAAGAGAATGAAAAACTAGATCAGCAGTACAAGAGAGGATACGGAATGCAGAACTTCTCT  
CCAGCTGGAACTGAACAAGTGAACGAAATTACATTAAGAAAAGAAAGGAGCAGTGAAGAATTTGAA  
GACAAGAAGGTTGAGCTGAAAGAGAACCTGATTGCTGAGCTAGAAGAAAAGAAAATGATTGAAAATG  
AAAAGCTGACAATGGAACGACTGGAGATTCTATGGAGGTGAAACCTATCATGACCAGAAAAGTTGCGGAG  
GCGACCAATGATCCCGTCCCCATCCCAGACAAGAGGAGGAAACCTGCTCCAGCCAGCTAAACTATTTG  
TTAACAGATGAACAGATCATGGAGGATCTGAGAACATTAATAAGCTTAAGTCACCCAAGAGACCAGCAT  
CTCCATCCTCTCCTGAGCACTTGCTGCAACACCCGCGGAATCTCCAGCCAGAGGTTTGAAGCTCGGAT  
AGAAGATGGCAAACGTACTATGACAAAAGATGGTACCACAAGAGCCAGGCCATCTATCTGGAGTCAAAG  
GACAACCAGAACTGAGCTGCGTGATCAGTTCTGTAGGAGCCAATGAGATCTGGGTGAGGAAAGACAAGTG  
ACAGCACAAGATGAGGATCTACCTGGGCCAGCTTCAGCGCGGGCTCTTCTGTGATCCGCCGCGCTCAGC  
TGCT

**ACGCGT**ACGCGGCCGCTCGAGCAGAACTCATCTCAGAAGAGGATCTGGCAGCAATGATATCCTGGATT  
ACAAGGATGACGACGATAAGGTTTAA



[View online »](#)

**Protein Sequence:** >RC210535 protein sequence  
Red=Cloning site Green=Tags(s)

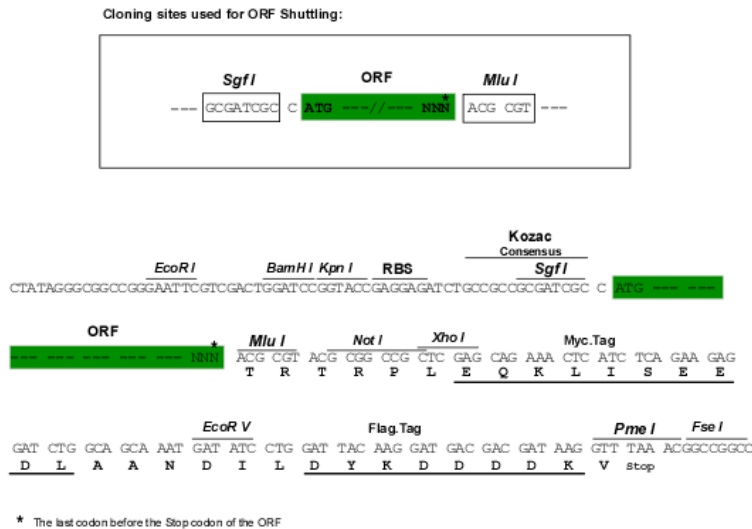
MSAAGLLAPAPAQAGAPPAPEYYPEEDEELES AEDDERSCRGRESDTEDASETDLAKHDEEDYVEMKE  
 QMYQDKLASLKRQLQQLQEGTLQEYQKRMKKLDQYKERIRNAELFLQLETEQVERNYIKEKKAAVKEFE  
 DKKVELKENLIAELEEKKKMIENEKLT MELTGD SMEVKPIMTRKLR RRRPNPVPVPDKRRKPAPAQLNYL  
 LTDEQIMEDLRTLNLKLSPKRPASPSSPEHL PATPAESPAQRFEARIEDGKLYYDKRWYHKSQAIYLESK  
 DNQKLSCVI SSVGANEIWRKTS DSTKMRIYLGQLQRGLFVIRRRSAA

TRTRPLEQKLISEEDLAANDILDYKDDDDKV

**Chromatograms:** [https://cdn.origene.com/chromatograms/mk6004\\_h05.zip](https://cdn.origene.com/chromatograms/mk6004_h05.zip)

**Restriction Sites:** SgfI-MluI

**Cloning Scheme:**



**ACCN:** NM\_022491

**ORF Size:** 984 bp

**OTI Disclaimer:** The molecular sequence of this clone aligns with the gene accession number as a point of reference only. However, individual transcript sequences of the same gene can differ through naturally occurring variations (e.g. polymorphisms), each with its own valid existence. This clone is substantially in agreement with the reference, but a complete review of all prevailing variants is recommended prior to use. [More info](#)

**OTI Annotation:** This clone was engineered to express the complete ORF with an expression tag. Expression varies depending on the nature of the gene.

**Components:** The ORF clone is ion-exchange column purified and shipped in a 2D barcoded Matrix tube containing 10ug of transfection-ready, dried plasmid DNA (reconstitute with 100 ul of water).

**Reconstitution Method:**

1. Centrifuge at 5,000xg for 5min.
2. Carefully open the tube and add 100ul of sterile water to dissolve the DNA.
3. Close the tube and incubate for 10 minutes at room temperature.
4. Briefly vortex the tube and then do a quick spin (less than 5000xg) to concentrate the liquid at the bottom.
5. Store the suspended plasmid at -20°C. The DNA is stable for at least one year from date of shipping when stored at -20°C.

**RefSeq:** [NM\\_022491.3](#)

**RefSeq Size:** 4728 bp

**RefSeq ORF:** 987 bp

**Locus ID:** 64426

**UniProt ID:** [Q9H7L9](#)

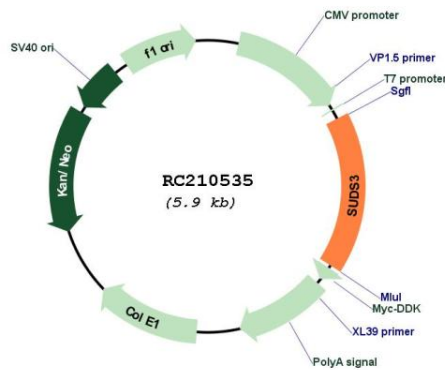
**Cytogenetics:** 12q24.23

**Protein Families:** Transcription Factors

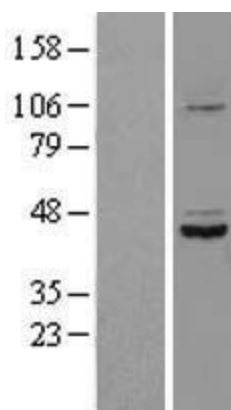
**MW:** 38.1 kDa

**Gene Summary:** SDS3 is a subunit of the histone deacetylase (see HDAC1; MIM 601241)-dependent SIN3A (MIM 607776) corepressor complex (Fleischer et al., 2003 [PubMed 12724404]).[supplied by OMIM, Mar 2008]

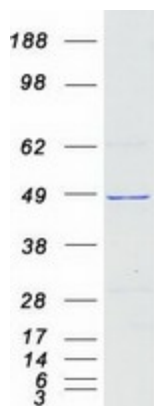
**Product images:**



Circular map for RC210535



Western blot validation of overexpression lysate (Cat# [LY402929]) using anti-DDK antibody (Cat# [TA50011-100]). Left: Cell lysates from untransfected HEK293T cells; Right: Cell lysates from HEK293T cells transfected with RC210535 using transfection reagent MegaTran 2.0 (Cat# [TT210002]).



Coomassie blue staining of purified SDS3 protein (Cat# [TP310535]). The protein was produced from HEK293T cells transfected with SDS3 cDNA clone (Cat# RC210535) using MegaTran 2.0 (Cat# [TT210002]).