

Product datasheet for **RC210530**

MORC3 (NM_015358) Human Tagged ORF Clone

Product data:

| | |
|---------------------------|--|
| Product Type: | Expression Plasmids |
| Product Name: | MORC3 (NM_015358) Human Tagged ORF Clone |
| Tag: | Myc-DDK |
| Symbol: | MORC3 |
| Synonyms: | NXP2; ZCW5; ZCWCC3 |
| Mammalian Cell Selection: | Neomycin |
| Vector: | pCMV6-Entry (PS100001) |
| E. coli Selection: | Kanamycin (25 ug/mL) |



[View online »](#)

ORF Nucleotide Sequence:

>RC210530 ORF sequence
 Red=Cloning site Blue=ORF Green=Tags(s)

TTTTGTAATACGACTCACTATAGGGCGGCCGGGAATTCGTCGACTGGATCCGGTACCGAGGAGATCTGCC
 GCC**CGCATCGCC**

ATGGCGGCGCAGCCACCCCGGGATACGCTCAGCGCGCTTTGCCGAAGTTTTACATACAAATTCTA
 CTAGTCACACCTGGCCATTCAGTGCAGTTGCTGAATTAATAGATAATGCTTATGATCCTGATGTGAACGC
 TAAACAAATATGGATTGACAAAACAGTATAAATGACCATATATGCTTGACATTCACCGACAATGGGAAT
 GGTATGACTTCTGATAAATTACATAAAATGCTAAGCTTTGGCTTCAGTGACAAAAGTCACCATGAATGGTC
 ATGTCCCAGTTGGATTATATGGGAATGGCTTCAAGTCGGGTTCTATGCGTCTGGGTAAGACGCAATCGT
 TTTTACAAAAATGGAGAAAGCATGAGCGTGGGCTTTTGTCTCAGACCTACTTGGAAAGTCATAAAAGCG
 GAGCATGTTGTTGTTCCAATAGTGGCATTCAACAAGCACCGACAGATGATTAATTTAGCAGAATCAAAG
 CCAGCCTTGTGCAATTCTGGAACATTCTGTGTTTCCACGGAACAGAAGTTACTGGCAGAATTGATGC
 TATTATAGGCAAGAAGGGGACGAGGATCATCTTTGGAATCTTAGAAGCTACAAAAATGCAACAGAGTTC
 GATTTTAAAAGGATAAATATGATATCAGAATTCGGAGGATTTAGATGAGATAACAGGGAAGAAGGGGT
 ACAAGAAGCAGGAAAGGATGGACCAGATTGCCCTGAGAGTGACTATTCCTGAGGGCTTATTGCAGTAT
 ATTATATCTAAAGCCAAGAATGCAGATCATCTACGTGGACAGAAAGTGAAGACACAGCTGGTTTCGAAG
 AGTCTTGCCCTACATCGAACGTGATGTTTATCGACCAAAATTTTTATCTAAAACAGTGAGAATTACCTTTG
 GATTCACCTGCAGAAATAAAGATCATTATGGGATAATGATGTATCACAGAAATAGACTCATCAAAGCTTA
 TGAAAAAGTTGGATGTCAGTTAAGGGCAAAACATGGGTGTTGGAGTGGTTGGAATTATAGAGTGAAT
 TTCCTTAAGCCAACCTATAATAAACAAGATTCGACTATACTAATGAGTACAGACTTACAATAACAGCAC
 TAGGAAAAAGCTGAATGATTACTGGAATGAAATGAAAGTGAAGAAAAATACAGAAATCTCTCTAAATTT
 GCCAGTTGAAGATATACAGAAGCGTCCTGATCAGACATGGGTTTCAGTGTGATGCCTGTCTAAAGTGGCGG
 AAATTACCTGATGGGATGGATCAACTTCCTGAAAATGGTATTGCTCCAATAACCCTGACCCACAGTTCA
 GAAATTGTGAGGTTCCAGAAGAACCTGAAGATGAGGATTTGGTACATCCCCTTATGAAAAAACCTACAA
 AAAGACCAACAAGGAAAAATTCAGGATCAGACAACCGGAAATGATCCCTCGGATTAATGCTGAAGTGTG
 TTTCCGCCAAGTCTCTTCAACTCCAAGCTTTTCTTCTCCTAAGGAAAGTGTCCAAGAAGACATCTTT
 CAGAAGGAACAAATCTTATGCGACAAGACTTCTAAATAATCATCAAGTTCACCTCAGTCTGAACCTGA
 GAGCAACAGCTTGAACCGAGACTTTCTACTCGTTCCTCAATTTTGAATGCAAGAATCGGAGATTGAGT
 AGTCAGTTTGAATTCAGTTTATAAAGGTGATGATGATGATGGAGATGTCATCATCTTAGAAGAAAAACA
 GTACCCCAAACTGCAGTAGATCATGATATTGACATGAAATCAGAACAGAGTCAGTGTGAGCAAGGTGG
 TGTTTCAGGTTGAGTTTGTGGGTGACAGTGAACCTTGTGGCCAACTGGTTCAACAAGCACCTCATATCC
 CGATGCGACCAGGAAATACTGCAGCTACCCAGACTGAAGTACCAAGTTTAGTTGTTAAAAAGAAGAAA
 CTGTTGAAGACGAGATAGACGTAAGAAATGATGCAGTGATTCTGCCCTCCTGTGTAGAAGCTGAAGCAAA
 GATACATGAAACCCAGGAAACCACCGATAAATCTGCAGATGATGCAGGCTGCCAATTACAAGAAGTGA
 AACCAGCTACTCCTTGTCACTGAGGAAAAAGAGAATTATAAAGACAGTGCATATGTTTACTGATCAAA
 TCAAAGTGTACAACAGAGGATACTAGAAATGAATGACAAGTATGTTAAGAAAGAACTTGCCATCAGTC
 CACTGAAACCGATGCTGTATTTTACTTGAAGTATTAATGGCAAATCTGAAAGTCCAGACCATATGGTA
 TCTCAGTATCAGCAAGCTTTGGAAGAAATAGAAAGGCTGAAAAACAATGTAGTGCCTTTGCAACATGTAA
 AGGCTGAATGCAGCCAGTGTCCAATAATGAGAGTAAAAGTGAATGGATGAGATGGCTGTGCAGCTTGA
 CGATGTGTTTAGACAAGTGGACAATGCAGTATTGAGAGGGACCAGTATAAAAGTGAAGTTGAATTGCTG
 GAAATGGAAAAGTCACAAATCCGTTTACAGTGTGAAGAACTCAAAGTGAAGTAGAACAGTTAAAACTCA
 CAAATCAACAGACGGCAACAGATGTTTCAACATCAAGTAACTTGAAGGAGTCTGTAATCATATGGATGG
 AGAAAGCCTCAAACCTCGATCTCTCGAGTTAACGTAGGACAAGTCTGGCTATGATTGTGCTGATCTT
 GATCTTCAGCAAGTGAATTACGATGTTGATGTAGTTGATGAGATTTTAGGACAAGTGTGAACAAATGA
 GTGAAATCAGTAGTACT

ACGCGTACGCGGCCGCTCGAGCAGAACTCATCTCAGAAGAGGATCTGGCAGCAAATGATATCCTGGATT
 ACAAGGATGACGACGATAAGGTTTAA

Protein Sequence: >RC210530 protein sequence
 Red=Cloning site Green=Tags(s)

```

MAAQPPRGIRLSALCPKFLHTNSTSHTWPFSAVAELIDNAYDPDVNAKQIWIWIDKTIVINDHICLTFDTDNGN
GMTSDKLLHKMLSFSGFSDKVTMNGHVVPVGLYGNFGKSGSMRLGKDAIVFTKNGESMSVGLLSQTYLEVIKA
EHVVVPIVAFNKHQMINLAESKASLAAILHSLFSTEQKLLAELDAIIGKKGTRIIWNLRSYKNATEF
DFEKDKYDIRIPEDLDEITGKKGYKKQERMDQIAPESDYSRLRAYCSILYLKPRMQIILRGQKVKTQLVSK
SLAYIERDVYRPKFLSKTVRITFGFNCRNKDHYGIMMYHRNRLIKAYEKVGCQLRANMVGVVVGIIECN
FLKPTHNKQDFDYTNEYRLTITALGEKLN DYWNEMKVKKNT EYPLNLPVEDIQKRPDQTWVQCDACLKWR
KLPDGMQDLPEKWYCSNNPDPQFRNCEVPEEPEDEDLVHPTYEKTYKKTNKEKFRIRQPEMIPRINAELL
FRPTALSTPSFSPPKESVPRRHLSEGTNSYATRLNNHQVPPQSEPESENLSKRRLLSTRSSILNAKNRRLS
SQFENSVYKGGDDDDGDVILEENSTPKPAVDHIDMKSEQSHVEQGGVQVEFVGDSEPCGQTGSTSTSSS
RCDQGNTAATQTEVPSLVVKKEETVEDEIDVRNDAVILPSCVEAEAKIHETQETDKSADDAGCQLQELR
NQLLLVTEEKENYKRQCHMFTDQIKVLQQRILEMNDKYVKKETCHQSTETDAVFLLESINGKSESPDHMV
SQYQQALEEIERLKKQCSALQHVKAECSCSNNESKSEMDEMAVQLDDVFRQLDKCSIERDQYKSEVELL
EMEKSQIRSQCEELKTEVEQLKSTNQQTADVSTSSNIEESVNHMHDGESLKLRLRVNVGQLLAMI VPDL
DLQQVNYD VDVVDEILGQVVEQMSEISST
  
```

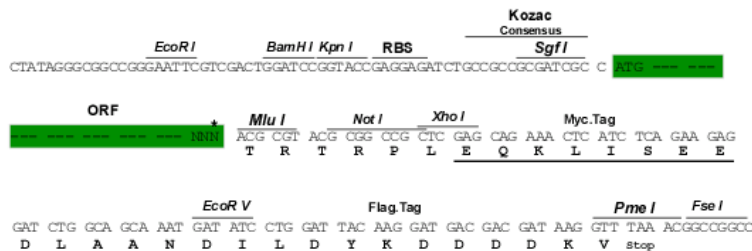
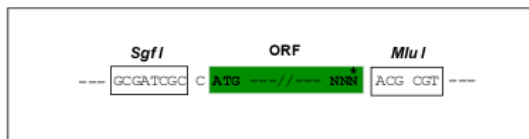
TRTRPLEQKLISEEDLAANDILDYKDDDDKV

Chromatograms: https://cdn.origene.com/chromatograms/mk6692_c01.zip

Restriction Sites: SgfI-MluI

Cloning Scheme:

Cloning sites used for ORF Shuttling:



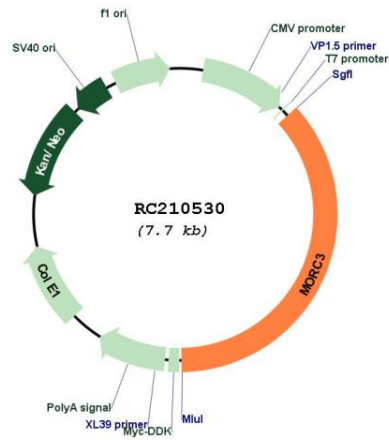
* The last codon before the Stop codon of the ORF

ACCN: NM_015358

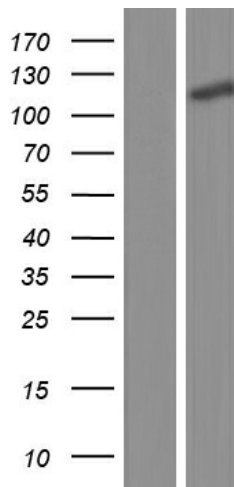
ORF Size: 2817 bp

| | |
|-------------------------------|---|
| OTI Disclaimer: | The molecular sequence of this clone aligns with the gene accession number as a point of reference only. However, individual transcript sequences of the same gene can differ through naturally occurring variations (e.g. polymorphisms), each with its own valid existence. This clone is substantially in agreement with the reference, but a complete review of all prevailing variants is recommended prior to use. More info |
| OTI Annotation: | This clone was engineered to express the complete ORF with an expression tag. Expression varies depending on the nature of the gene. |
| Components: | The ORF clone is ion-exchange column purified and shipped in a 2D barcoded Matrix tube containing 10ug of transfection-ready, dried plasmid DNA (reconstitute with 100 ul of water). |
| Reconstitution Method: | <ol style="list-style-type: none">1. Centrifuge at 5,000xg for 5min.2. Carefully open the tube and add 100ul of sterile water to dissolve the DNA.3. Close the tube and incubate for 10 minutes at room temperature.4. Briefly vortex the tube and then do a quick spin (less than 5000xg) to concentrate the liquid at the bottom.5. Store the suspended plasmid at -20°C. The DNA is stable for at least one year from date of shipping when stored at -20°C. |
| Note: | Plasmids are not sterile. For experiments where strict sterility is required, filtration with 0.22um filter is required. |
| RefSeq: | NM_015358.3 |
| RefSeq Size: | 4246 bp |
| RefSeq ORF: | 2820 bp |
| Locus ID: | 23515 |
| UniProt ID: | Q14149 |
| Cytogenetics: | 21q22.12 |
| MW: | 107 kDa |
| Gene Summary: | This gene encodes a protein that localizes to the nuclear matrix and forms nuclear bodies via an ATP-dependent mechanism. The protein is predicted to have coiled-coil and zinc finger domains and has RNA binding activity. Alternative splicing produces multiple transcript variants encoding distinct isoforms. [provided by RefSeq, Feb 2016] |

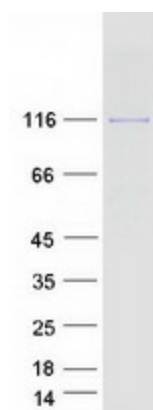
Product images:



Circular map for RC210530



Western blot validation of overexpression lysate (Cat# [LY414617]) using anti-DDK antibody (Cat# [TA50011-100]). Left: Cell lysates from untransfected HEK293T cells; Right: Cell lysates from HEK293T cells transfected with RC210530 using transfection reagent MegaTran 2.0 (Cat# [TT210002]).



Coomassie blue staining of purified MORC3 protein (Cat# [TP310530]). The protein was produced from HEK293T cells transfected with MORC3 cDNA clone (Cat# RC210530) using MegaTran 2.0 (Cat# [TT210002]).