

## Product datasheet for **RC210529**

### **CTBP1 (NM\_001328) Human Tagged ORF Clone**

#### **Product data:**

Product Type:	Expression Plasmids
Product Name:	CTBP1 (NM_001328) Human Tagged ORF Clone
Tag:	Myc-DDK
Symbol:	CTBP1
Synonyms:	BARS; HADDTS
Mammalian Cell Selection:	Neomycin
Vector:	pCMV6-Entry (PS100001)
E. coli Selection:	Kanamycin (25 ug/mL)



[View online »](#)

**ORF Nucleotide Sequence:**

>RC210529 ORF sequence  
 Red=Cloning site Blue=ORF Green=Tags(s)

TTTTGTAATACGACTCACTATAGGGCGGCCGGGAATTCGTCGACTGGATCCGGTACCGAGGAGATCTGCC  
 GCC**CGGATCGCC**

ATGGGCAGCTCGCACTTGCTCAACAAGGGCCTGCCGCTTGGCGTCCGACCTCCGATCATGAACGGGCCCC  
 TGCACCCGCGGCCCTGGTGGCATTGCTGGATGGCCGGGACTGCACAGTGGAGATGCCCATCCTGAAGGA  
 CGTGGCCACTGTGGCCTTCTGCGACGCGCAGTCCACGCAGGAGATCCATGAGAAGTCTGAACGAGGCT  
 GTGGGGCCCTGATGTACCACACCATCACTCTCACAGGGAGGACCTGGAGAAGTTCAAAGCCCTCCGCA  
 TCATCGTCCGGATTGGCAGTGGTTTTGACAACATCGACATCAAGTCGGCCGGGATTTAGGCATTGCCGT  
 CTGCAACGTGCCCGCGCGTCTGTGGAGGAGACGGCCGACTCGACGCTGTGCCACATCCTGAACCTGTAC  
 CGGCGGGCCACCTGGCTGCACCAGGCGCTGCGGGAGGGCACAGTCCAGAGCGTCGAGCAGATCCGCG  
 AGGTGGCGTCCGGCGCTGCCAGGATCCGCGGGGAGACCTTGGGCATCATCGGACTTGGTCGCGTGGGCA  
 GGCAGTGGCGCTGCGGGCAAGGCCTTCGGCTTCAACGTGCTTCTACGACCCTTACTTGTCCGATGGC  
 GTGGAGCGGGCGCTGGGGCTGCAGCGTGTGACGCCCTGCAGGACCTGCTCTTCCACAGCGACTGCGTGA  
 CCCTGCACTGCGGCCTAACGAGCACAACCACCACCTCATCAACGACTTACCGTCAAGCAGATGAGACA  
 AGGGGCCCTTCTGGTGAACACAGCCCGGGTGGCTGGTGGATGAGAAGGCGCTGGCCCAGGCCCTGAAG  
 GAGGGCCGGATCCGCGCGCGGCCCTGGATGTGCACGAGTCGGAACCCCTAAGCTTTAGCCAGGGCCCTC  
 TGAAGGATGCACCAACCTCATCTGCACCCCCATGCTGCATGGTACAGCGAGCAGGCATCCATCGAGAT  
 GCGAGAGGAGGGCACGGGAGATCCGCAGAGCCATCACAGGCCGGATCCCAGACAGCCTGAAGAAGTGT  
 GTCAACAAGGACCATCTGACAGCCGCCACCCACTGGGCCAGCATGGACCCCGCCGTCGTGCACCCGTGAGC  
 TCAATGGGGCTGCCTATAGTACCCTCCGGCGTGGTGGCGTGGCCCCACTGGCATCCAGCTGCTGT  
 GGAAGGTATCGTCCCAGCGCCATGTCCCTGTCCACGGCTGCCCCCTGTGGCCACCCGCCCCAGGCC  
 CCTTCTCTGGCCAAACCGTCAAGCCCAGGCGGATAGAGACCACGCCAGTGACCAGTTG

**ACGCGT**ACGCGGCCGCTCGAGCAGAACTCATCTCAGAAGAGGATCTGGCAGCAAATGATATCCTGGATT  
 ACAAGGATGACGACGATAAGGTTTAA

**Protein Sequence:**

>RC210529 protein sequence  
 Red=Cloning site Green=Tags(s)

MGSSHLNKGPLGVRPPIMNGPLHPRPLVALLDGRDCTVEMPI LKDVATVAFCD AQSTQEIHEKVLNEA  
 VGALMYHTITL TREDLEKFKALRIIVRIGSGFDNIDIKSAGDLGI AVCNVPAAASVEETADSTLCHILNLY  
 RRATWLHQALREGTRVQSV EQIREVASGAARIRGETLGI IGLGRVGOAVALRAKAFGNVLFYDPYLS DG  
 VERALGLQRVSTLQDLLFHSDCVTLHCGLNEHNHHLINDFTVKQMRQGAFLVNTARGGLVDEKALAQALK  
 EGRIRGAALDVHESEPLSFSQGPLKDAPNLICTPHAAWYSEQASIEMREEAAREIRRAITGRIPDSLKNC  
 VNKDHLTAATHWASMDPAVVHPELNGAAYRYPGVVGVAPTGIPAAVEGI VPSAMSLSHGLPPVAHPPHA  
 PSPGQTVKPEADRDHASDQL

**TR**TRPLEQKLISEEDLAANDILDYKDDDDKV

**Chromatograms:**

[https://cdn.origene.com/chromatograms/mk6002\\_b11.zip](https://cdn.origene.com/chromatograms/mk6002_b11.zip)

**Restriction Sites:**

SgfI-MluI

**Cloning Scheme:**


**ACCN:** NM\_001328

**ORF Size:** 1320 bp

**OTI Disclaimer:** The molecular sequence of this clone aligns with the gene accession number as a point of reference only. However, individual transcript sequences of the same gene can differ through naturally occurring variations (e.g. polymorphisms), each with its own valid existence. This clone is substantially in agreement with the reference, but a complete review of all prevailing variants is recommended prior to use. [More info](#)

**OTI Annotation:** This clone was engineered to express the complete ORF with an expression tag. Expression varies depending on the nature of the gene.

**Components:** The ORF clone is ion-exchange column purified and shipped in a 2D barcoded Matrix tube containing 10ug of transfection-ready, dried plasmid DNA (reconstitute with 100 ul of water).

**Reconstitution Method:**

1. Centrifuge at 5,000xg for 5min.
2. Carefully open the tube and add 100ul of sterile water to dissolve the DNA.
3. Close the tube and incubate for 10 minutes at room temperature.
4. Briefly vortex the tube and then do a quick spin (less than 5000xg) to concentrate the liquid at the bottom.
5. Store the suspended plasmid at -20°C. The DNA is stable for at least one year from date of shipping when stored at -20°C.

**RefSeq:** [NM\\_001328.3](#)

**RefSeq Size:** 2288 bp

**RefSeq ORF:** 1323 bp

**Locus ID:** 1487

**UniProt ID:** [Q13363](#)

**Cytogenetics:** 4p16.3

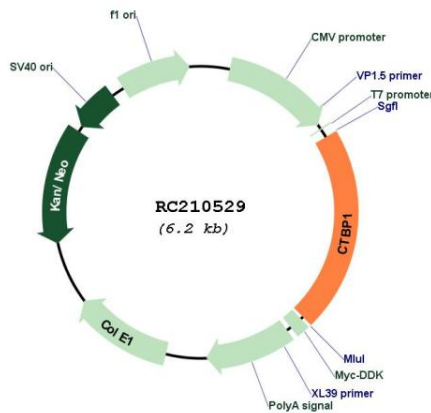
**Domains:** 2-Hacid\_DH, 2-Hacid\_DH\_C

**Protein Pathways:** Chronic myeloid leukemia, Notch signaling pathway, Pathways in cancer, Wnt signaling pathway

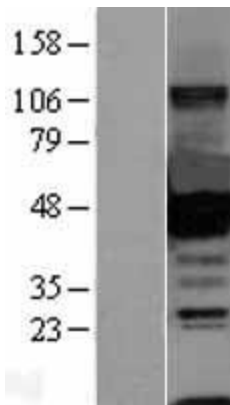
**MW:** 47.5 kDa

**Gene Summary:** This gene encodes a protein that binds to the C-terminus of adenovirus E1A proteins. This phosphoprotein is a transcriptional repressor and may play a role during cellular proliferation. This protein and the product of a second closely related gene, CTBP2, can dimerize. Both proteins can also interact with a polycomb group protein complex which participates in regulation of gene expression during development. Alternative splicing of transcripts from this gene results in multiple transcript variants. [provided by RefSeq, Jul 2008]

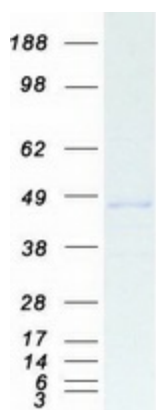
**Product images:**



Circular map for RC210529



Western blot validation of overexpression lysate (Cat# [LY400528]) using anti-DDK antibody (Cat# [TA50011-100]). Left: Cell lysates from untransfected HEK293T cells; Right: Cell lysates from HEK293T cells transfected with RC210529 using transfection reagent MegaTran 2.0 (Cat# [TT210002]).



Coomassie blue staining of purified CTBP1 protein (Cat# [TP310529]). The protein was produced from HEK293T cells transfected with CTBP1 cDNA clone (Cat# RC210529) using MegaTran 2.0 (Cat# [TT210002]).