

Product datasheet for RC210526

C4orf46 (NM_001008393) Human Tagged ORF Clone

Product data:

Product Type: Expression Plasmids
Product Name: C4orf46 (NM_001008393) Human Tagged ORF Clone
Tag: Myc-DDK
Symbol: C4orf46
Synonyms: RCDG1
Mammalian Cell Selection: Neomycin
Vector: pCMV6-Entry (PS100001)
E. coli Selection: Kanamycin (25 ug/mL)
ORF Nucleotide Sequence: >RC210526 ORF sequence
Red=Cloning site Blue=ORF Green=Tags(s)

TTTTGTAATACGACTCACTATAGGGCGGCCGGAATTCGTCGACTGGATCCGGTACCGAGGAGATCTGCC
GCC**CGATCGCC**

ATGGCCGACCCTGAGGAGTTGCAGGTTTCTTCGCCGCCCGCCGCTCCCTCTTCTCCCTCCTCTTCAG
ACGCCTCTGCAGCATCTCCCGGGCGGCCAGTGAGTTGGGCTGGCCAGTCCGAGCAGGAGCAGCGG
CCCAACGGTGGACCAGCTGGAGGAAGTGGAGCTGCAGATCGGAGACGCAGCCTTTTCATTAACAAACTT
CTTGAAGCCACATCTGCAGTATCAGCTCAAGTGAAGAAGTGCCTTCAAATGTACAGAAAATGCACGTT
TCCTTAAACGTGGCGGACCTTGAAGAAGGCTATGATTCTTGAACCTGATGAC

ACGCGTACGCGGCCGCTCGAGCAGAAACTCATCTCAGAAGAGGATCTGGCAGCAAATGATATCCTGGATT
ACAAGGATGACGACGATAAGGTTTAA

Protein Sequence: >RC210526 protein sequence
Red=Cloning site Green=Tags(s)
MADPEELQVSSPPPPSSSSDASAASSPGGPVSLGWVPSRSGPTVDQLEEVELQIGDAAFSLTKL
LEATSAVSAQVEELAFKCTENARFLKTRDRLLEKGYDSLKPPD

TRTRPLEQKLISEEDLAANDILDYKDDDDKV

Chromatograms: https://cdn.origene.com/chromatograms/mk6380_a11.zip

Restriction Sites: SgfI-MluI



[View online »](#)

Cloning Scheme:


ACCN: NM_001008393

ORF Size: 339 bp

OTI Disclaimer: The molecular sequence of this clone aligns with the gene accession number as a point of reference only. However, individual transcript sequences of the same gene can differ through naturally occurring variations (e.g. polymorphisms), each with its own valid existence. This clone is substantially in agreement with the reference, but a complete review of all prevailing variants is recommended prior to use. [More info](#)

OTI Annotation: This clone was engineered to express the complete ORF with an expression tag. Expression varies depending on the nature of the gene.

Components: The ORF clone is ion-exchange column purified and shipped in a 2D barcoded Matrix tube containing 10ug of transfection-ready, dried plasmid DNA (reconstitute with 100 ul of water).

Reconstitution Method:

1. Centrifuge at 5,000xg for 5min.
2. Carefully open the tube and add 100ul of sterile water to dissolve the DNA.
3. Close the tube and incubate for 10 minutes at room temperature.
4. Briefly vortex the tube and then do a quick spin (less than 5000xg) to concentrate the liquid at the bottom.
5. Store the suspended plasmid at -20°C. The DNA is stable for at least one year from date of shipping when stored at -20°C.

RefSeq: [NM_001008393.4](#)

RefSeq Size: 3545 bp

RefSeq ORF: 342 bp

Locus ID: 201725

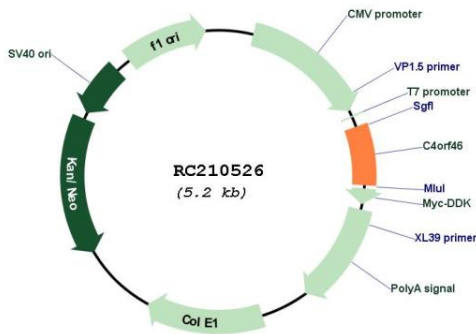
UniProt ID: [Q504U0](#)

Cytogenetics: 4q32.1

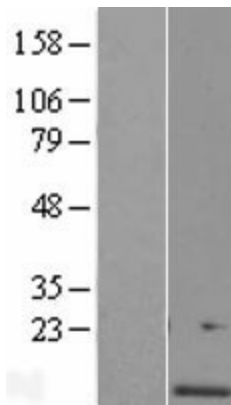
MW: 11.9 kDa

Gene Summary: This gene encodes a small, conserved protein of unknown function that is expressed in a variety of tissues. There are pseudogenes for this gene on chromosomes 6, 8, 16, and X. Alternative splicing results in multiple transcript variants. [provided by RefSeq, Feb 2013]

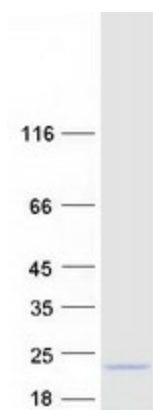
Product images:



Circular map for RC210526



Western blot validation of overexpression lysate (Cat# [LY423420]) using anti-DDK antibody (Cat# [TA50011-100]). Left: Cell lysates from untransfected HEK293T cells; Right: Cell lysates from HEK293T cells transfected with RC210526 using transfection reagent MegaTran 2.0 (Cat# [TT210002]).



Coomassie blue staining of purified C4orf46 protein (Cat# [TP310526]). The protein was produced from HEK293T cells transfected with C4orf46 cDNA clone (Cat# RC210526) using MegaTran 2.0 (Cat# [TT210002]).