

Product datasheet for **RC210525**

GTF3C4 (NM_012204) Human Tagged ORF Clone

Product data:

| | |
|---------------------------|--|
| Product Type: | Expression Plasmids |
| Product Name: | GTF3C4 (NM_012204) Human Tagged ORF Clone |
| Tag: | Myc-DDK |
| Symbol: | GTF3C4 |
| Synonyms: | KAT12; TF3C-delta; TFIII90; TFIIIC90; TFIIIC290; TFIIICDELTA |
| Mammalian Cell Selection: | Neomycin |
| Vector: | pCMV6-Entry (PS100001) |
| E. coli Selection: | Kanamycin (25 ug/mL) |



[View online »](#)

ORF Nucleotide Sequence:

>RC210525 representing NM_012204
 Red=Cloning site Blue=ORF Green=Tags(s)

TTTTGTAATACGACTCACTATAGGGCGGCCGGGAATTCGTCGACTGGATCCGGTACCGAGGAGATCTGCC
 GCC**CGCATCGCC**

ATGAACACGGCCGACCAGGCCCGGGTGGGGCCCGCGACGACGGGCCTGCGCCGTCTGGGGAGGAGAGG
 GAGAGGGGGCGCGAGGCGGGCGGAAGGAGCCAGCAGCGGACGCGGCCCGGGGCCACGCGCTGCATT
 CCGCCTCATGGTACTCGCGGGAGCCGGCCGTGAAGCTGCAGTATGCGGTGAGCGGCCTGGAACCGCTG
 GCTTGGTCCGAGGACCACCGGTGTCTGTGCCACGGCCCGCAGCATCGTGTGCTGGAGCTCATCTGCG
 ACGTGCACAACCCGGGCCAGGACCTGGTTATCCACCGCACCTCGGTGCCCGCACCGCTCAACAGCTGTCT
 CCTCAAAGTTGGCTCAAAAACAGAAGTTGCTGAGTGCAAGGAGAAATTCGCCCTCCAAGGACCCACG
 GTCAGTCAGACTTTCATGTTGGATAGGGTGTCAACCCGAGGGGAAGGCTTTACCACCAATGAGAGGAT
 TCAAGTACACCAGCTGGTCTCCCATGGGTGCGATGCTAATGGCAGGTGCCTCTTGGCAGCACTGACCAT
 GGACAATCGCCTGACCATCCAGGCAAATCTCAACAGACTGCAGTGGTCCAGCTGGTTGACCTGACTGAG
 ATCTATGGAGAAGCTCTTATGAGACCAGTTACAGGCTCTCTAAAAATGAGGCCCGGAAGGAAATCTCG
 GGGATTTTGTGAGTTTCAGAGGAGACACAGCATGCAGACCCAGTCAGAATGGAGTGGTCGGGCATCTG
 TACCACCCAGCAGGTCAAGCATAACAACGAATGCCGGGACGTTGGCAGTGTGCTCCTGGCTGTCTCTTT
 GAAAACGGTAATATCGCCGTGTGGCAGTTTCAGCTGCCGTTTGTAGGAAAAGAATCCATCTCTTCATGCA
 ACACAATTGAGTCAGGAATCACCTCTCCAGTGTATTGTTTTGGTGGGAATATGAGCACAAATCGAAA
 AATGAGTGGCCTTATTGTGGGAGTGTCTTTGGACCCATAAAAATTTCTCCTGTCAATCTCAAAGCAGTC
 AAAGGCTATTTCACTTTAAGGCAGCCTGTTATCTTGTGAAAGAAATGGACCAGTTACCTGTGCACAGTA
 TCAAATGTGTGCCACTTTATCATCTTACCAGAAGTGTAGTTGCAGCTTAGTAGTGGCTGCAAGAGGCTC
 TTATGTATTTTGGTGTCTTCTTCTGATCTCCAAGCAGGGCTGAATGTTACAATTTCCATGTACAGGC
 CTTCACTCACTGCCAATTGTCTCCATGACTGCAGACAAACAGAATGGAACAGTCTATACTTGTCCAGTG
 ACGGAAAAGGTGAGGCAGCTGATCCCATTTTACAGATGTTGCATTGAAGTTTGAACACCAGTTGATTAA
 ACTCTCAGATGTGTTGGCTCAGTGAGGACTCACGGGATAGCAGTGAGCCCTGCGGTGCATACCTGGCC
 ATCATCACCAGTGGGCGATGATCAACGGCCTCCACCCTGTTAACAAAACTACCAGGTCCAATTTGTTA
 CTCTCAAAACCTTTGAAGAGGCAGCTGCTCAGCTCCTGGAATCTTCAGTTCAAAACCTTTTTAAGCAGGT
 AGATTTAATAGACCTAGTACGCTGGAAGATTTTAAAAGATAAACATATCCCTCAATTTTACAAGAAGCT
 TTGGAAAAAAGATTGAAAGCAGTGGAGTACCTATTTTTGGCGTTTTAAGCTTTTCTCCTGAGGATTT
 TATATCAGTCAATGCAGAAAACCCCTTCAAGAGCCTTGTGGAAACCCACCCATGAGGACTCAAAAATCTT
 ACTAGTGGATTCGCTGGGATGGCAATGCTGACGATGAACAGCAGGAAGAAGGCACTTCTTCCAACAG
 GTGGTGAAGCAAGGCCTGCAGGAGAGGAGCAAGGAAGGAGATGTAGAGGAGCCCACTGATGACTCGCTCC
 CCACGACTGGAGATGCTGGAGGCCGTGAGCCAATGGAAGAGAACTCCTGGAAATCCAAGGGAAAAATCGA
 AGCTGTGGAGATGCACCTGACCAGGGAACACATGAAGCGAGTCTTAGGAGAAGTGTATCTGCACACCTGG
 ATCACAGAAAACACTAGCATCCCCACCCGGGACTCTGTAACTTTTTAAATGTCTGATGAAGAGTATGATG
 ACAGAAGTGCACGGGTGCTGATTGGACATATCTCAAAGAAGATGAACAAACAGACTTTCCCTGAGCACTG
 TAGTTTGTGTAAGAGATCTTGCCATTCACAGATCGCAAACAGGCAGTCTGTTCCAATGGCCACATTTGG
 CTCCGGTCTTCTTAACCTACCAGTCTGCCAGAGTTTGATATATAGAAGGTGTTTGTCTCCATGACAGCA
 TTGCCCGCATCCAGCTCCAGAAGATCCCGACTGGATTAAGAGGTTACTGCAAAGCCCTGCCCTTCTG
 TGATTCTCCTGTCTTC

ACGCGTACGCGGCCGCTCGAGCAGAACTCATCTCAGAAGAGGATCTGGCAGCAAATGATATCCTGGATT
 ACAAGGATGACGACGATAAGGTTTAA

Protein Sequence: >RC210525 representing NM_012204
Red=Cloning site Green=Tags(s)

MNTADQARVGPADDGPAPSGEEEEGGGEAGGKEPAADAAPGPSAAFRLMVTREPAVKLQYAVSGLEPL
AWSEDRVSVSTARSIIVLELICDVHNPQDLVIHRTSVPAPLNSCLLKVGSKTEVAECKEFAASKDPT
VSQTFMLDRVFNPEGKALPPMRGFKYTSWSPMGCDANGRCLLAALTMNRLTIQANLNRLQWVQLVDL TE
IYGERLYETSYRLSKNEAPEGNLGDFAEFQRRHSMQTPVRMEWSGICTTQQVKHNNNECRDVGSVLLAVLF
ENGNIAVWQFQLPFVKGESISSCNTIESGITSPSVLFWWEYEHNNRKM SGLIVGS AFGPIKILPVNLKAV
KGYFTLRQPVILWKEMDQLPVHSIKCVPLYHPYQKCSCLVVAARGSYVFWCLLLISKAGLNVHNSHVTG
LHSLPIVSMTADKQNGTYTSSDGKVRQLIPIFTDVALKFEHQLIKLSDFVGSVRTHGIAVSPCGAYLA
IITTEGMINGLHPVNKNYQVQVTLKTFEEAAAQLLESSVQNLFKQVDLIDLVRWKILKDKHIPQFLQEA
LEKKIESSGVTYFWRFKLFLRLILYQSMQKTPSEALWKPTHEDESKILLVDSPGMGNADDEQQEEGTSSKQ
VVKQGLQERSKEGDVEEPTDDSLPTTGDAGGREPMEEKLLEIQGKIEAVEMHLTREHMKRVLGEVYLHTW
ITENTSIPTRGLCNFLMSDEEYDDRTARVLIGHISKKMNKQTFPEHCSLCKEILPFTDRKQAVCSNGHIW
LRCFLTYQSCQSLIYRRCLLHDSIARHPAPEDPDWIKRLLQSPCPFCDSPVF

TRTRPLEQKLI SEEDLAANDILDYKDDDDKV

Chromatograms: https://cdn.origene.com/chromatograms/mk8114_e07.zip

Restriction Sites: Sgfl-Mlul

Cloning Scheme:


ACCN: NM_012204

ORF Size: 2466 bp

OTI Disclaimer: The molecular sequence of this clone aligns with the gene accession number as a point of reference only. However, individual transcript sequences of the same gene can differ through naturally occurring variations (e.g. polymorphisms), each with its own valid existence. This clone is substantially in agreement with the reference, but a complete review of all prevailing variants is recommended prior to use. [More info](#)

OTI Annotation: This clone was engineered to express the complete ORF with an expression tag. Expression varies depending on the nature of the gene.

Components: The ORF clone is ion-exchange column purified and shipped in a 2D barcoded Matrix tube containing 10ug of transfection-ready, dried plasmid DNA (reconstitute with 100 ul of water).

Reconstitution Method:

1. Centrifuge at 5,000xg for 5min.
2. Carefully open the tube and add 100ul of sterile water to dissolve the DNA.
3. Close the tube and incubate for 10 minutes at room temperature.
4. Briefly vortex the tube and then do a quick spin (less than 5000xg) to concentrate the liquid at the bottom.
5. Store the suspended plasmid at -20°C. The DNA is stable for at least one year from date of shipping when stored at -20°C.

RefSeq: [NM_012204.4](#)

RefSeq Size: 3866 bp

RefSeq ORF: 2469 bp

Locus ID: 9329

UniProt ID: [Q9UKN8](#)

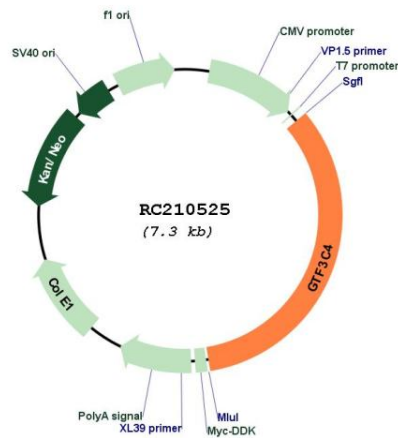
Cytogenetics: 9q34.13

Protein Families: Transcription Factors

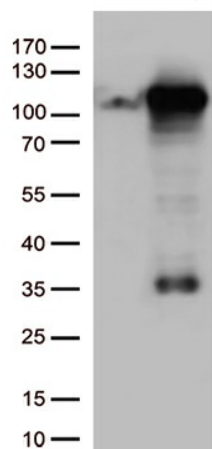
MW: 92 kDa

Gene Summary: Essential for RNA polymerase III to make a number of small nuclear and cytoplasmic RNAs, including 5S RNA, tRNA, and adenovirus-associated (VA) RNA of both cellular and viral origin. Has histone acetyltransferase activity (HAT) with unique specificity for free and nucleosomal H3. May cooperate with GTF3C5 in facilitating the recruitment of TFIIB and RNA polymerase through direct interactions with BRF1, POLR3C and POLR3F. May be localized close to the A box.[UniProtKB/Swiss-Prot Function]

Product images:



Circular map for RC210525



HEK293T cells were transfected with the pCMV6-ENTRY control (Cat# [PS100001], Left lane) or pCMV6-ENTRY GTF3C4 (Cat# RC210525, Right lane) cDNA for 48 hrs and lysed. Equivalent amounts of cell lysates (5 ug per lane) were separated by SDS-PAGE and immunoblotted with anti-GTF3C4 (Cat# [TA812628])(1:500).