

Product datasheet for RC210521L3

Aminopeptidase A (ENPEP) (NM_001977) Human Tagged Lenti ORF Clone

Product data:

Product Type:	Expression Plasmids
Product Name:	Aminopeptidase A (ENPEP) (NM_001977) Human Tagged Lenti ORF Clone
Tag:	Myc-DDK
Symbol:	Aminopeptidase A
Synonyms:	APA; CD249; gp160
Mammalian Cell Selection:	Puromycin
Vector:	pLenti-C-Myc-DDK-P2A-Puro (PS100092)
E. coli Selection:	Chloramphenicol (34 ug/mL)
ORF Nucleotide Sequence:	The ORF insert of this clone is exactly the same as(RC210521).
Restriction Sites:	SgfI-MluI
Cloning Scheme:	

Cloning sites used for ORF Shuttling:



* The last codon before the Stop codon of the ORF.

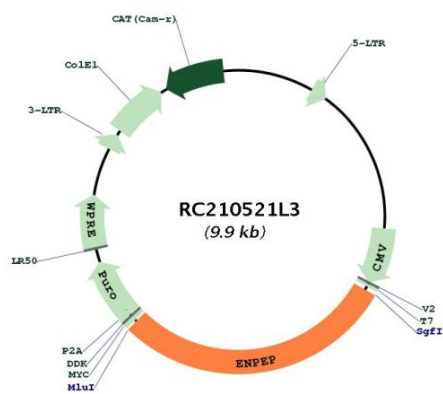
ACCN:	NM_001977
ORF Size:	2871 bp



[View online »](#)

OTI Disclaimer:	The molecular sequence of this clone aligns with the gene accession number as a point of reference only. However, individual transcript sequences of the same gene can differ through naturally occurring variations (e.g. polymorphisms), each with its own valid existence. This clone is substantially in agreement with the reference, but a complete review of all prevailing variants is recommended prior to use. More info
OTI Annotation:	This clone was engineered to express the complete ORF with an expression tag. Expression varies depending on the nature of the gene.
Components:	The ORF clone is ion-exchange column purified and shipped in a 2D barcoded Matrix tube containing 10ug of transfection-ready, dried plasmid DNA (reconstitute with 100 ul of water).
Reconstitution Method:	<ol style="list-style-type: none">1. Centrifuge at 5,000xg for 5min.2. Carefully open the tube and add 100ul of sterile water to dissolve the DNA.3. Close the tube and incubate for 10 minutes at room temperature.4. Briefly vortex the tube and then do a quick spin (less than 5000xg) to concentrate the liquid at the bottom.5. Store the suspended plasmid at -20°C. The DNA is stable for at least one year from date of shipping when stored at -20°C.
RefSeq:	NM_001977.3 , NP_001968.2
RefSeq Size:	5004 bp
RefSeq ORF:	2874 bp
Locus ID:	2028
UniProt ID:	Q07075
Cytogenetics:	4q25
Domains:	Peptidase_M1
Protein Families:	Druggable Genome, ES Cell Differentiation/IPS, Protease, Transmembrane
Protein Pathways:	Renin-angiotensin system
MW:	109.3 kDa
Gene Summary:	The ENPEP gene encodes glutamyl aminopeptidase, a type II integral membrane protein with an extracellular zinc-binding domain. This protein can upregulate blood pressure by cleaving the N-terminal aspartate from angiotensin II, and can regulate blood vessel formation and enhance tumorigenesis in some tissues. Along with ANPEP and DPP4, ENPEP was found to be a candidate co-receptor for the coronavirus SARS-CoV-2, which causes COVID-19. [provided by RefSeq, Apr 2020]

Product images:



Circular map for RC210521L3