

Product datasheet for RC210518

ARFRP1 (NM_003224) Human Tagged ORF Clone

Product data:

Product Type: Expression Plasmids
Product Name: ARFRP1 (NM_003224) Human Tagged ORF Clone
Tag: Myc-DDK
Symbol: ARFRP1
Synonyms: ARL18; ARP; Arp1
Mammalian Cell Selection: Neomycin
Vector: pCMV6-Entry (PS100001)
E. coli Selection: Kanamycin (25 ug/mL)
ORF Nucleotide Sequence: >RC210518 ORF sequence
 Red=Cloning site Blue=ORF Green=Tags(s)

TTTTGTAATACGACTCACTATAGGGCGGCCGGAATTCGTCGACTGGATCCGGTACCGAGGAGATCTGCC
 GCCCGCATCGCC

ATGTACACGCTGCTGTCGGGCTTGTACAAGTACATGTTTCAGAAGGACGAGTACTGCATCCTGATCCTGG
 GCCTGGACAATGCTGGGAAGACGACCTTCTGGAGCAGTCGAAAACCCGATTTAAACAAGAACTACAAGG
 GATGAGTCTATCCAAAATCACCACCACCGTGGGCCTAAACATCGGCACTGTGGATGTGGAAAGGCTCGG
 CTCATGTTCTGGACTTAGGAGGGCAGGAAGAGCTGCAGTCTTTGTGGACAAGTATTATGCGGAGTGTC
 ACGGCGTCATCTACGTCATTGACTCCACCGACGAGGAGAGGCTGGCTGAGTCCAAGCAGGCGTTTGAGAA
 GGTGGTGACCAGCGAGGGCCTGTGCGGTGTCCCGTCTTGGTGCTGGCCAACAAGCAGGATGTGGAGACG
 TGCCCTCTCAATCCCTGACATCAAGACGGCCTTCAGCGACTGCACCAGCAAGATCGGCAGGCGAGATTGCC
 TGACCCAGGCCTGCTCGGCCCTCACAGGCAAAGGGGTGCGCGAGGGCATCGAGTGGATGGTGAAGTGTGT
 CGTGCGGAATGTGCACCGGCCCGCCGCGCAGAGGGACATCACG

ACGCGTACGCGGCCGCTCGAGCAGAACTCATCTCAGAAGAGGATCTGGCAGCAAATGATATCCTGGATT
 ACAAGGATGACGACGATAAGGTTTAA

Protein Sequence: >RC210518 protein sequence
 Red=Cloning site Green=Tags(s)

MYLLSGLYKYMFKDEYICILILGLDNAGKTFLEQSKTRFNKNYKMSLSKITTTVGLNIGTVDVGKAR
 LMFWDLGGQEELQSLWDKYAECHEGVIYVIDSTDEERLAESKQAFEKVVTSEALCGVPVLVLANKQDVET
 CLSIPDIKTAFSICTSKIGRRDCLTQACSALTGKGVREGIEWMVKCVVRNVHRPPRQDIT

TRTRPLEQKLISEEDLAANDILDYKDDDDKV



[View online »](#)

Chromatograms: https://cdn.origene.com/chromatograms/mk6380_a10.zip

Restriction Sites: SgfI-MluI

Cloning Scheme:



ACCN: NM_003224

ORF Size: 603 bp

OTI Disclaimer: The molecular sequence of this clone aligns with the gene accession number as a point of reference only. However, individual transcript sequences of the same gene can differ through naturally occurring variations (e.g. polymorphisms), each with its own valid existence. This clone is substantially in agreement with the reference, but a complete review of all prevailing variants is recommended prior to use. [More info](#)

OTI Annotation: This clone was engineered to express the complete ORF with an expression tag. Expression varies depending on the nature of the gene.

Components: The ORF clone is ion-exchange column purified and shipped in a 2D barcoded Matrix tube containing 10ug of transfection-ready, dried plasmid DNA (reconstitute with 100 ul of water).

Reconstitution Method:

1. Centrifuge at 5,000xg for 5min.
2. Carefully open the tube and add 100ul of sterile water to dissolve the DNA.
3. Close the tube and incubate for 10 minutes at room temperature.
4. Briefly vortex the tube and then do a quick spin (less than 5000xg) to concentrate the liquid at the bottom.
5. Store the suspended plasmid at -20°C. The DNA is stable for at least one year from date of shipping when stored at -20°C.

RefSeq: [NM_003224.6](#)

RefSeq Size: 2571 bp

RefSeq ORF: 606 bp

Locus ID: 10139

UniProt ID: [Q13795](#)

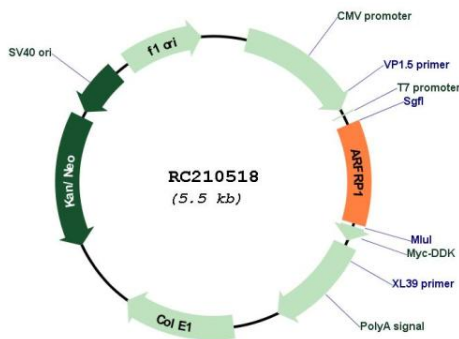
Cytogenetics: 20q13.33

Domains: RAB, SAR, ARF, arf

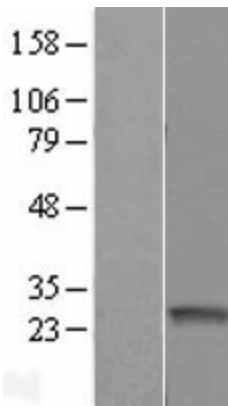
MW: 22.6 kDa

Gene Summary: The protein encoded by this gene is a membrane-associated GTP-ase which localizes to the plasma membrane and is related to the ADP-ribosylation factor (ARF) and ARF-like (ARL) proteins. This gene plays a role in membrane trafficking between the trans-Golgi network and endosomes. Alternatively spliced transcript variants encoding different isoforms have been identified. [provided by RefSeq, May 2012]

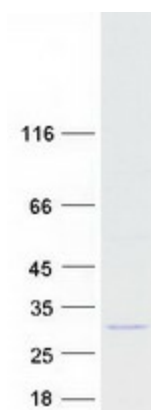
Product images:



Circular map for RC210518



Western blot validation of overexpression lysate (Cat# [LY418821]) using anti-DDK antibody (Cat# [TA50011-100]). Left: Cell lysates from untransfected HEK293T cells; Right: Cell lysates from HEK293T cells transfected with RC210518 using transfection reagent MegaTran 2.0 (Cat# [TT210002]).



Coomassie blue staining of purified ARFRP1 protein (Cat# [TP310518]). The protein was produced from HEK293T cells transfected with ARFRP1 cDNA clone (Cat# RC210518) using MegaTran 2.0 (Cat# [TT210002]).