

Product datasheet for RC210516

Jagged1 (JAG1) (NM_000214) Human Tagged ORF Clone

Product data:

Product Type:	Expression Plasmids
Product Name:	Jagged1 (JAG1) (NM_000214) Human Tagged ORF Clone
Tag:	Myc-DDK
Symbol:	Jagged1
Synonyms:	AGS; AGS1; AHD; AWS; CD339; DCHE; HJ1; JAGL1
Mammalian Cell Selection:	Neomycin
Vector:	pCMV6-Entry (PS100001)
E. coli Selection:	Kanamycin (25 ug/mL)
ORF Nucleotide Sequence:	>RC210516 representing NM_000214 Red=Cloning site Blue=ORF Green=Tags(s)

TTTTGTAATACGACTCACTATAGGGCGGCCGGAATTCGTCGACTGGATCCGGTACCGAGGAGATCTGCC
GCC**CGATCGCC**

ATGCGTCCCCACGGACGCGGGCCGGTCCGGGCGCCCCCTAAGCCTCCTGCTCGCCCTGCTCTGTGCC
TGCGAGCCAAGGTGTGTGGGCCCTCGGGTCAGTTCGAGTTGGAGATCCTGTCCATGCAGAACGTGAACGG
GGAGCTGCAGAACGGAACTGCTGCGGGCGGCCCGGAACCCGGGAGACCGAAGTGCACCCGCGACGAG
TGTGACACATACTCAAAGTGTGCTCAAGGAGTATCAGTCCCGCTCACGGCCGGGGGCCCTGCAGT
TCGGCTCAGGGTCCACGCTGTATCGGGGCAACACCTCAACCTCAAGCCAGCCGCGGCAACGACCG
CAACCGCATCGTGTGCCTTTCAGTTCGCTGGCCGAGTCTATACGTTGCTTGTGGAGCGTGGGAT
TCCAGTAAAGACACCGTTCAACCTGACAGTATTATTGAAAAGGCTTCTCACTCGGGCATGATCAACCCCA
GCCGGCAGTGGCAGACGCTGAAGCAGAACACGGGCGTTGCCACTTTGAGTATCAGATCCGCGTGACCTG
TGATGACTACTACTATGGCTTTGGCTGCAATAAGTTCTGCCGCCAGAGATGACTTCTTTGGGCACTAT
GCCTGTGACCAGAATGGCAACAAAATTGCATGGAAGGCTGGATGGGCCCGAATGTAACAGAGCTATTT
GCCGACAAGGCTGACTGTGATAAGTGCATCCACACCCGGGATGCGTCCACGGCATCTGTAATGAGCCCTGG
CAGTGCCTCTGTGAGACCAACTGGGGCGGCCAGCTCTGTGACAAAGATCTCAATTACTGTGGGATCATC
AGCCGTGTCTCAACGGGGAACTTGTAGCAACACAGGCCCTGACAAATATCAGTGTTCCTGCCCTGAGGG
GTATTCAGGACCCAACCTGTGAAATTGCTGAGCAGCCTGCCTCTCTGATCCCTGTCAACAAGAGGCAGC
TGTAAGGAGACCTCCCTGGGCTTTGAGTGTGAGTGTCCCGAGGCTGGACCGGCCCCACATGCTCTACAA
ACATTGATGACTGTTCTCCTAATAACTGTTCCACGGGGCACCTGCCAGGACCTGGTTAACGGATTTAA
GTGTGTGTGCCCCCACAGTGGACTGGGAAAACGTGCCAGTTAGATGCAAAATGAATGTGAGGCCAAACCT
TGTGTAACGCCAAATCCTGTAAGAATCTCATTGCCAGCTACTACTGCGACTGTCTCCCGGCTGGATGG
GTCAGAATTGTGACATAAATATTAATGACTGCCTTGCCAGTGTGAGAATGACGCTCCTGTGGGATTT
GGTTAATGGTTATCGCTGTATCTGTCCACTGGCTATGCAGGCGATCACTGTGAGAGAGACATCGATGAA



[View online »](#)

TGTGCCAGCAACCCCTGTTTGAATGGGGTCACTGTCAGAATGAAATCAACAGATTCCAGTGTCTGTGTC
CCTACTGGTTTCTCTGAAACCTCTGTCAGCTGGACATCGATTATTGTGAGCCTAATCCCTGCCAGAACGG
TGCCCAGTGCTACAACCGTGCCAGTGACTATTTCTGCAAGTGCCCGAGGACTATGAGGGCAAGAACTGC
TCACACCTGAAAGACCACTGCCGCACGACCCCTGTGAAGTGATTGACAGCTGCACAGTGGCCATGGCTT
CCAACGACACACCTGAAGGGTGCCTATATTTCTCCAACGCTGTGGTCTCACGGGAAGTGAAGAG
TCAGTCGGGAGGCAAATTCACCTGTGACTGTAACAAAGGCTTACGGGAACATACTGCCATGAAAAATATT
AATGACTGTGAGAGCAACCCCTTGTAGAAACGGTGGCACTTGCATCGATGGTGTCAACTCCTACAAGTGCA
TCTGTAGTGACGGCTGGGAGGGGCTACTGTGAAACCAATATTAATGACTGCAGCCAGAACCCCTGCCA
CAATGGGGCACGTGTCGCGACCTGGTCAATGACTTCTACTGTGACTGTAAAAATGGGTGAAAAGGAAAG
ACCTGCCACTCACGTGACAGTCACTGTGATGAGGCCACGTGCAACAACGGTGGCACCTGCTATGATGAGG
GGGATGCTTTAAGTGATGTGCTGCTGGCGCTGGGAAGGAACCCTGTAAATAGCCGAAACAGTAG
CTGCTGCCAACCCCTGCCATAATGGGGCACATGTGTGGTCAACGGCGAGTCTTTACGTGCGTCTGC
AAGGAAGGCTGGGAGGGGCCATCTGTGCTCAGAATACCAATGACTGCAGCCCTCATCCCTGTTACAACA
GCGGCACCTGTGTGGATGGAGACAACCTGGTACCGGTGCGAATGTGCCCGGGTTTTGCTGGGCCGACTG
CAGAATAAACATCAATGAATGCCAGTCTTACCTTGTGCCTTTGGAGCGACCTGTGTGGATGAGATCAAT
GGTACCAGGTGTGCTGCCCTCCAGGGCACAGTGGTGCCAAGTGCCAGGAAGTTTCAGGGAGACCTTGCA
TCACCATGGGGAGTGTGATACGAGATGGGGCAATGGGATGATGACTGTAATACCTGCCAGTGCCTGAA
TGGACGGATCGCCTGCTCAAAGGTCTGGTGTGGCCCTCGACCTTGCCTGCTCCACAAAGGGCACAGCGAG
TGCCCCAGCGGGCAGAGCTGCATCCCCATCCTGGACGACCACTGCTTCCGTCACCCCTGCACTGGTGTGG
GCGAGTGTGCGTCTTCCAGTCTCCAGCCGGTGAAGACAAAGTGCACCTCTGACTCCTATTACCAGGATAA
CTGTGCGAACATCACATTTACCTTTAACAAGGAGATGATGTCACCAGGTCTTACTACGGAGCACATTTGC
AGTGAATTGAGGAATTTGAATATTTTGAAGAATGTTCCGCTGAATATTAATCTACATCGCTTGGCAGC
CTTCCCCTTTCAGCGAACCAATGAAATACATGTGGCATTCTGCTGAAGATATACGGGATGATGGAAACCC
GATCAAGGAAATCACTGACAAAATAATCGATCTTGTAGTAAACGTGATGGAAACAGCTCGCTGATTGCT
GCCGTTGCAGAAGTAAGAGTTCAGAGGGCGCTCTGAAGAACAGAACAGATTTCTTGTTCCTTGTCTGA
GCTCTGTCTTAACTGTGGCTTGGATCTGTTGCTTGGTACGCGCTTCTACTGGTGCCTGCGGAAGCGGCG
GAAGCCGGGCAGCCACACACTCAGCCTCTGAGGACAACACCACCAACAACGTGCGGGAGCAGCTGAAC
CAGATCAAAAACCCATTGAGAAACATGGGGCCAAACCGTCCCCATCAAGGATTACGAGAACAAGAACT
CCAAAATGTCTAAAATAAGGACACACAATTCTGAAGTAGAAGAGGACGACATGGACAAAACACCAGCAGAA
AGCCCGGTTTGCCAAGCAGCCGGCTACACGCTGGTAGACAGAGAAGAGAAGCCCCCAACGGCACGCTG
ACAAAACACCCAACTGGACAAAACAACAGGACAACAGAGACTTGAAAGTGCCAGAGCTTAAACCGAA
TGGAGTACATCGTA

ACGCGTACGCGGCGCTCGAGCAGAACTCATCTCAGAAGAGGATCTGGCAGCAAATGATATCCTGGATT
ACAAGGATGACGACGATAAGGTTTAA

Protein Sequence: >RC210516 representing NM_000214
 Red=Cloning site Green=Tags(s)

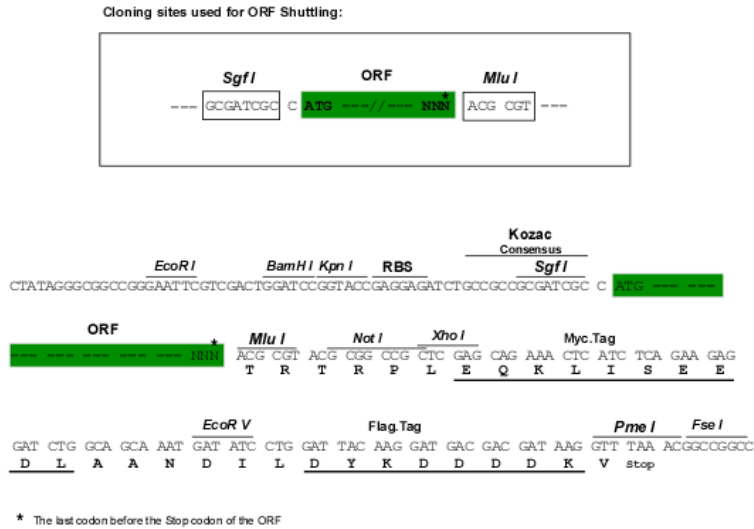
MRSRPRTRGRSGRPLSLLALLCALRAKVCASGQFELEILSMQNVNDELQNGNCCGGARNPGDRKCTRDE
 CDTYFKVCLKEYQSRVTAGGPCSFSGSSTPVIGNTFNLKASRGNDNRNRIVLPFSAWPRSYYTLLVEAWD
 SSNDTVQPDSIIIEKASHSGMINPSRQWQTLKQNTGVAHFEYQIRVTCDDYYYGFGCNKFCRPRDDFFGHY
 ACDQNGNKTCEMGWMPPECNRAICRQGCSPKHGSKLPGDCRCQYGWQGLYCDKCIHPHGCYVHICNEPW
 QCLCETNWWGQLCDKDLNYCGTHQPLNGGTCSNTGPDKYQCSCPEGYSGPNCEIAEHACLSDPCHNRGS
 CKETSLGFCECSPGWTGPTCSTNIDDCSPNNCSHGCTCQDLVNGFKCVCPPQWTGKTCQLDANECEAKP
 CVNAKSKNLIASYYCDCLPGWMQNCNDININDCLGQCQNDASCRDLVNGYRCICPPGYAGDHCEERDIDE
 CASNPCLNGGHCQNEINRFQCLCPTGFSGNLCQLDIDYCEPNPCQNGAQCYNRASDYFCPCPEYEGKNC
 SHLKDHCRTTPEVIDSCTVAMASNDTPEGVRYISSNVCGPHGKCKSQSGGKFTCDCNKGFTGTCHENI
 NDCESNPCRNGGTCIDGVNSYKICSDGWEGAYCETNINDCSQNPCHNGGTCRDLVNDFYCDCKNGWKGK
 TCHSRDSQCDEATCNNGGTCYDEGDAFKCMCPGGWEGTTCNIARNSSCLPNPCHNGGTCVNGESFTCVC
 KEGWEGPICAQNTNDCSPHPCYNSGTCDVDGNWYRCECAPGFAGPDCRININECQSSPCAFGATCVDEIN
 GYRCVCPPGHSGAKCQEVSGRPCITMGSVIRDGAKWDDDCNTCQCLNGRIACSKVWCGPRPCLLHKHSE
 CPSGQSCIPILDDQCFVHPCTGVGECRSSSLQPVKTKCTSDSYQDNCANITFTFNKEMMSPGLTTEHIC
 SELRNLNILKNVSAEYSIYIACEPSPSANNEIHVAISAEDIRDDGNPIKEITDKIIDLVSKRDGNSSLIA
 AVAEVRVQRRPLKNRTDFLVPLSSVLTVAWICCLVTAIFYWCLRKRKPGSHTHSASEDNTTNNVREQLN
 QIKNPIEKHGANTVPIKDYENKNSKMSKIRTHNSEVEEDMDKHQQKARFAKQPAYTLVDREEKPPNGTL
 TKHPNWTNKQDNRDLESAQSLNRMEYIV

TRTRPLEQKLISEEDLAANDILDYKDDDDKV

Chromatograms: https://cdn.origene.com/chromatograms/mg2506_a01.zip

Restriction Sites: SgfI-MluI

Cloning Scheme:

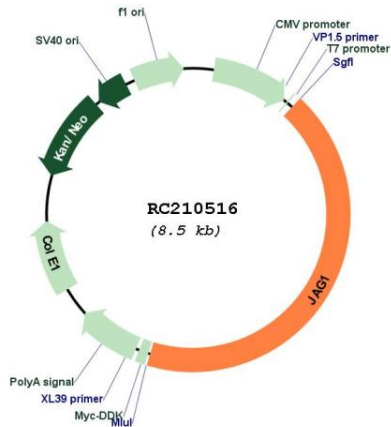


ACCN: NM_000214

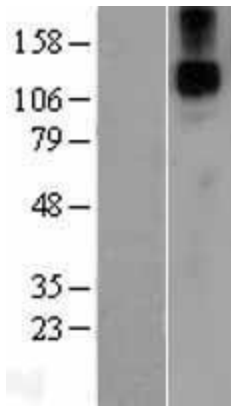
ORF Size: 3654 bp

OTI Disclaimer:	The molecular sequence of this clone aligns with the gene accession number as a point of reference only. However, individual transcript sequences of the same gene can differ through naturally occurring variations (e.g. polymorphisms), each with its own valid existence. This clone is substantially in agreement with the reference, but a complete review of all prevailing variants is recommended prior to use. More info
OTI Annotation:	This clone was engineered to express the complete ORF with an expression tag. Expression varies depending on the nature of the gene.
Components:	The ORF clone is ion-exchange column purified and shipped in a 2D barcoded Matrix tube containing 10ug of transfection-ready, dried plasmid DNA (reconstitute with 100 ul of water).
Reconstitution Method:	<ol style="list-style-type: none"> 1. Centrifuge at 5,000xg for 5min. 2. Carefully open the tube and add 100ul of sterile water to dissolve the DNA. 3. Close the tube and incubate for 10 minutes at room temperature. 4. Briefly vortex the tube and then do a quick spin (less than 5000xg) to concentrate the liquid at the bottom. 5. Store the suspended plasmid at -20°C. The DNA is stable for at least one year from date of shipping when stored at -20°C.
Note:	Plasmids are not sterile. For experiments where strict sterility is required, filtration with 0.22um filter is required.
RefSeq:	NM_000214.3
RefSeq Size:	5896 bp
RefSeq ORF:	3657 bp
Locus ID:	182
UniProt ID:	P78504
Cytogenetics:	20p12.2
Domains:	VWC, DSL, EGF_CA, EGF, EGF, VWC_out
Protein Families:	Druggable Genome, ES Cell Differentiation/IPS, Transmembrane
Protein Pathways:	Notch signaling pathway
MW:	133.6 kDa
Gene Summary:	The jagged 1 protein encoded by JAG1 is the human homolog of the Drosophila jagged protein. Human jagged 1 is the ligand for the receptor notch 1, the latter is involved in signaling processes. Mutations that alter the jagged 1 protein cause Alagille syndrome. Jagged 1 signalling through notch 1 has also been shown to play a role in hematopoiesis. [provided by RefSeq, Nov 2019]

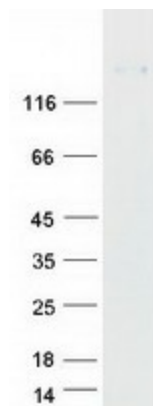
Product images:



Circular map for RC210516



Western blot validation of overexpression lysate (Cat# [LY400079]) using anti-DDK antibody (Cat# [TA50011-100]). Left: Cell lysates from untransfected HEK293T cells; Right: Cell lysates from HEK293T cells transfected with RC210516 using transfection reagent MegaTran 2.0 (Cat# [TT210002]).



Coomassie blue staining of purified JAG1 protein (Cat# [TP310516]). The protein was produced from HEK293T cells transfected with JAG1 cDNA clone (Cat# RC210516) using MegaTran 2.0 (Cat# [TT210002]).