

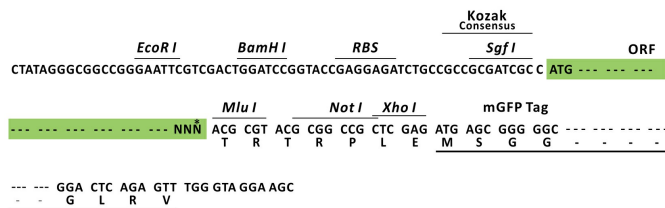
## Product datasheet for RC210511L4

### G protein alpha 12 (GNA12) (NM\_007353) Human Tagged Lenti ORF Clone

#### Product data:

Product Type:	Expression Plasmids
Product Name:	G protein alpha 12 (GNA12) (NM_007353) Human Tagged Lenti ORF Clone
Tag:	mGFP
Symbol:	G protein alpha 12
Synonyms:	gep; NNX3; RMP
Mammalian Cell Selection:	Puromycin
Vector:	pLenti-C-mGFP-P2A-Puro (PS100093)
E. coli Selection:	Chloramphenicol (34 ug/mL)
ORF Nucleotide Sequence:	The ORF insert of this clone is exactly the same as(RC210511).
Restriction Sites:	SgfI-MluI
Cloning Scheme:	

Cloning sites used for ORF Shuttling:



\* The last codon before the Stop codon of the ORF.

ACCN:	NM_007353
ORF Size:	1143 bp



[View online >](#)

**OTI Disclaimer:** Due to the inherent nature of this plasmid, standard methods to replicate additional amounts of DNA in E. coli are highly likely to result in mutations and/or rearrangements. Therefore, OriGene does not guarantee the capability to replicate this plasmid DNA. Additional amounts of DNA can be purchased from OriGene with batch-specific, full-sequence verification at a reduced cost. Please contact our customer care team at [custsupport@origene.com](mailto:custsupport@origene.com) or by calling 301.340.3188 option 3 for pricing and delivery.

The molecular sequence of this clone aligns with the gene accession number as a point of reference only. However, individual transcript sequences of the same gene can differ through naturally occurring variations (e.g. polymorphisms), each with its own valid existence. This clone is substantially in agreement with the reference, but a complete review of all prevailing variants is recommended prior to use. [More info](#)

**OTI Annotation:** This clone was engineered to express the complete ORF with an expression tag. Expression varies depending on the nature of the gene.

**Components:** The ORF clone is ion-exchange column purified and shipped in a 2D barcoded Matrix tube containing 10ug of transfection-ready, dried plasmid DNA (reconstitute with 100 ul of water).

**Reconstitution Method:**

1. Centrifuge at 5,000xg for 5min.
2. Carefully open the tube and add 100ul of sterile water to dissolve the DNA.
3. Close the tube and incubate for 10 minutes at room temperature.
4. Briefly vortex the tube and then do a quick spin (less than 5000xg) to concentrate the liquid at the bottom.
5. Store the suspended plasmid at -20°C. The DNA is stable for at least one year from date of shipping when stored at -20°C.

**RefSeq:** [NM\\_007353.2](#)

**RefSeq Size:** 4398 bp

**RefSeq ORF:** 1146 bp

**Locus ID:** 2768

**UniProt ID:** [Q03113](#)

**Cytogenetics:** 7p22.3-p22.2

**Domains:** G-alpha

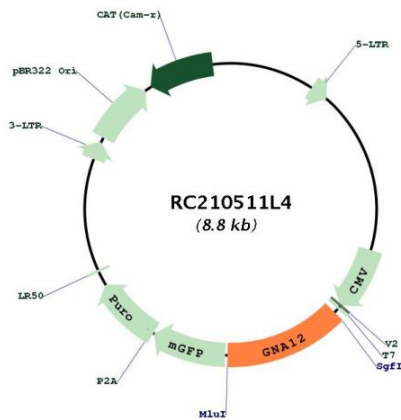
**Protein Families:** Druggable Genome

**Protein Pathways:** Long-term depression, MAPK signaling pathway, Regulation of actin cytoskeleton, Vascular smooth muscle contraction

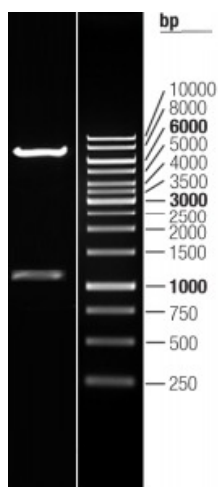
**MW:** 44.1 kDa

**Gene Summary:**

Guanine nucleotide-binding proteins (G proteins) are involved as modulators or transducers in various transmembrane signaling systems (PubMed:22609986, PubMed:15525651, PubMed:15240885, PubMed:17565996, PubMed:12515866, PubMed:16787920, PubMed:16705036, PubMed:23762476, PubMed:27084452). Activates effector molecule RhoA by binding and activating RhoGEFs (ARHGEF12/LARG) (PubMed:15240885, PubMed:12515866, PubMed:16202387). GNA12-dependent Rho signaling subsequently regulates transcription factor AP-1 (activating protein-1) (By similarity). GNA12-dependent Rho signaling also regulates protein phosphatase 2A activation causing dephosphorylation of its target proteins (PubMed:15525651, PubMed:17565996). Promotes tumor cell invasion and metastasis by activating RhoA/ROCK signaling pathway and up-regulating proinflammatory cytokine production (PubMed:23762476, PubMed:16787920, PubMed:16705036, PubMed:27084452). Inhibits CDH1-mediated cell adhesion in process independent from Rho activation (PubMed:11976333, PubMed:16787920). Together with NAPA promotes CDH5 localization to plasma membrane (PubMed:15980433). May play a role in the control of cell migration through the TOR signaling cascade (PubMed:22609986).[UniProtKB/Swiss-Prot Function]

**Product images:**


Circular map for RC210511L4



Double digestion of RC210511L4 using SgfI and MluI